



ADDENDUM NO. 2

Dated: December 17, 2018

TO THE CONTRACT DOCUMENTS FOR THE

**NW NEIGHBORHOOD PARK
PROJECT NO. 2015-11**

NOTICE TO ALL PLANHOLDERS:

You are hereby notified of the following clarifications, additions, and/or revisions to the contract documents for the above referenced project:

REVISIONS AND ADDITIONS TO THE SPECIFICATIONS AND CONSTRUCTION DRAWINGS

1. Replace Sheet E2.00 with Revised Sheet E2.00 dated 12/14/18 in the revision block. The Legend has been added to this sheet and is clouded.

The Contractor shall prepare the Proposal in full consideration of the information contained in this Addendum No. 1 as well as the original contract documents.

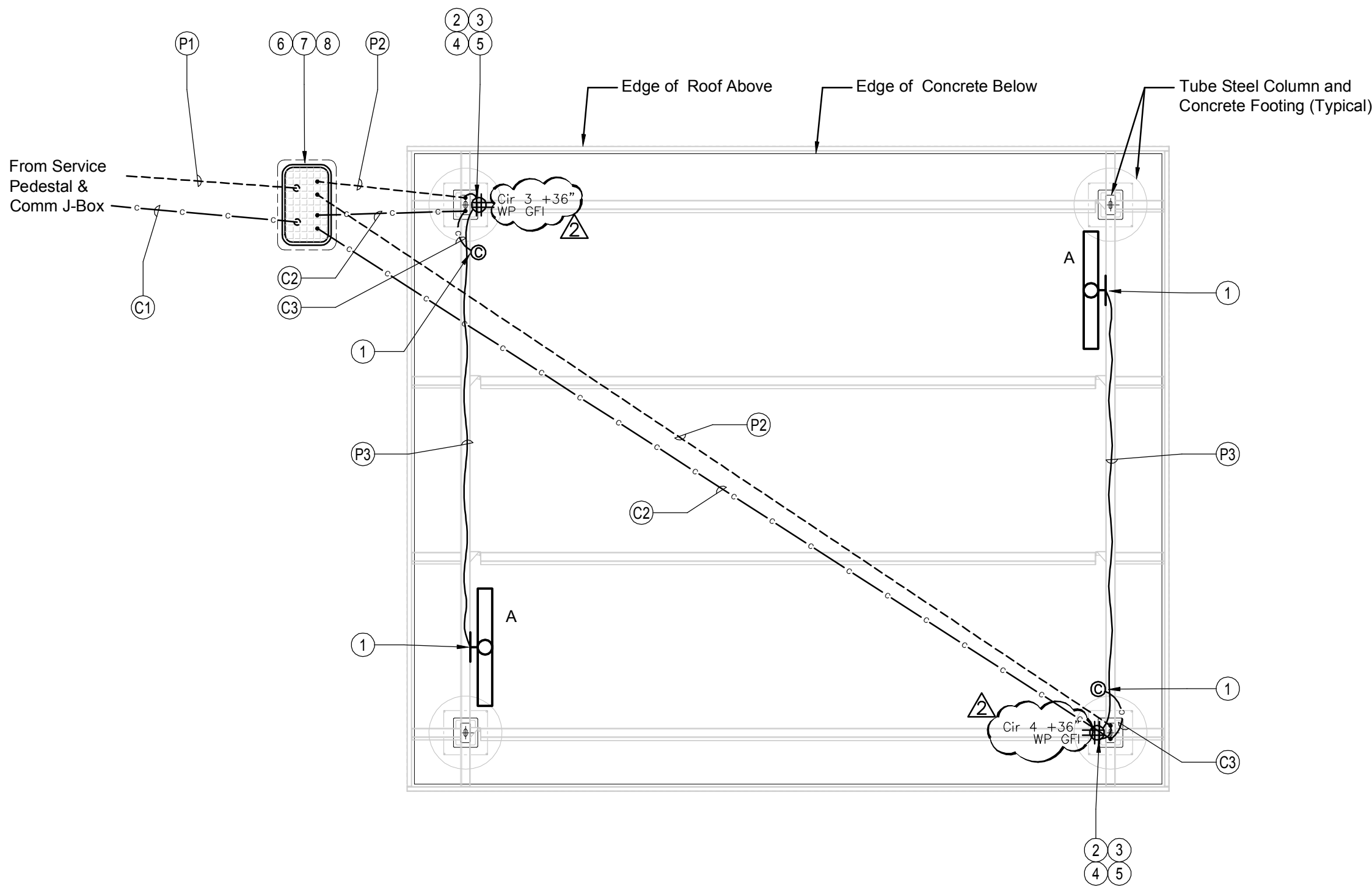
All bidders shall acknowledge receipt and acceptance of Addendum No.2 in the space provided in the contract proposal. Proposals submitted without the Addendum No. 2 acknowledgement shall be considered informal.

City of McMinnville

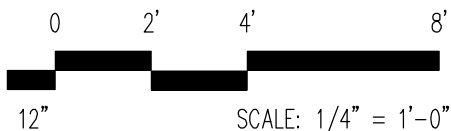
A handwritten signature in blue ink, appearing to read 'Rich Spofford', is written over the printed name.

Rich Spofford
Engineering Services Manager

SHELTER ELECTRICAL MATERIALS AND NOTES				13-Nov-2018
Item	Description	Manufacturer	Catalog No.	Remarks
1	1 Gang Masonry Box	RACO	695	Tack weld flush into 4x10 steel beam, Note F
2	2 Gang Masonry Box	RACO	696	Tack weld flush into 4x8 steel column, Note F
3	Duplex Receptacle - GFCI type 20A	HUBBELL	GFR5362SGGY	
4	Duplex Receptacle - Standard 20A	HUBBELL	HBL2162GY	Connect on load side of GFCI device
5	Weather Resistant Cover - Two Gang	BELL	5045-0	Note A below
6	In-Ground Flush polymer J-Box 17"x30"x18"deep	QUAZITE	PT1730BA18	Note B below
7	In-Ground Flush polymer J-Box Cover, Tier 15	QUAZITE	PT1730HA0017	with Electric Logo
8	Silicone filled wirenuts	IDEAL		Note C below
C1	Pullrope in 2" PVC raceway	Per Spec 261015		For future camera cable & LV power
C2	Pullline in 3/4" PVC/GRC raceway	Per Spec 261015		For future camera cable & LV power, Note D
C3	Pullline in 3/4" flexible (FLEX or ENT) raceway	Per Spec 261015		For future camera cable & LV power, Note E
P1	2" C with (4) #10, (2) #12, (2) #16, (1) #10 Ground	Per Spec 261015		Circuits for Receptacles & Lights
P2	3/4" PVC/GRC with (2) #10, (2) #12, (2) #16, (1) #12 Ground	Per Spec 261015		Circuits for Receptacles & Lights, Note D
P3	1/2" FLEX/ENT with (2) #12, (2) #16, (1) #12 Ground	Per Spec 261015		Circuits for Receptacles & Lights, Note E
Notes				
A Attach cover using silicone adhesive caulk and tamperproof torx stainless steel screws				
B See Detail JB/E2.00				
C Wiring splices shall be made water proof with suitable materials				
D Coordinate raceway installation with foundation concrete work				
E Coordinate raceway installation concealed in structure with building erector				
F Coordinate pre-cut opening in structural steel elements with fabricator.				

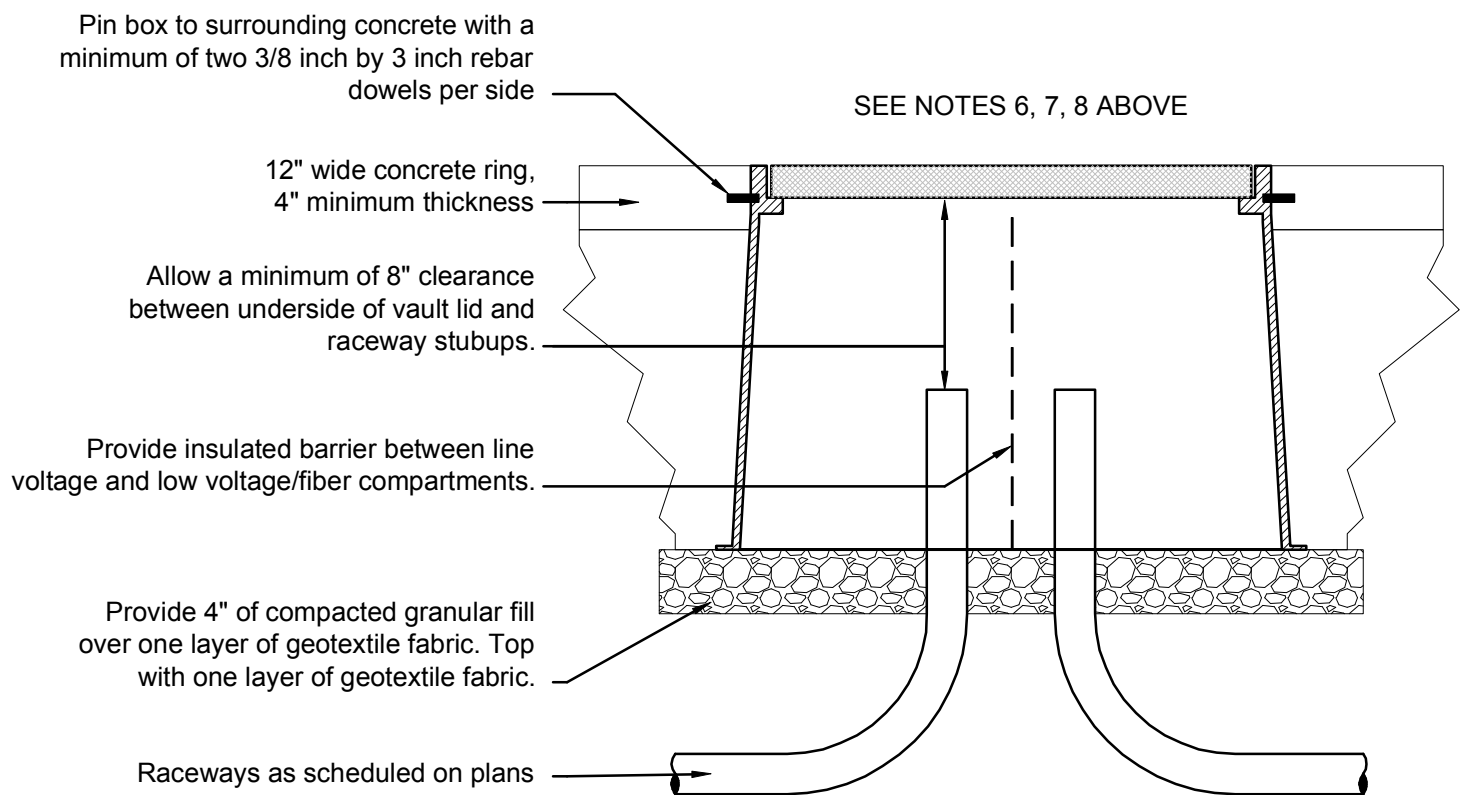


1
E2.00
SHELTER ELECTRICAL PLAN
SCALE: 1/4"=1'-0"



LEGEND

- A Wall Surface Mount LED Vandal Resistant - LUMINAIRE LED Model #LVP751-28WHP-3500K-120-CP-WHT-WET.
- # Double Duplex Receptacle, GFI Type
- Ⓢ CCTV Security Camera Provision
- Ⓢ Electrical Junction Box
- Ⓢ In-Grade Electrical Junction Box - See Detail
- T101 Time Switch for Lighting Control - INTERMATIC Model T101 (no substitutes).
- IBEC Irrigation Controller (FBO/IBEC) Connect on scheduled branch circuit.



JB
E2.00
IN-GRADE J-BOX DETAIL
SCALE: 1"=1'-0"

REVISIONS:

14 DEC 2018
Addendum No. 2

JOB NO.: 2015-11/HM12054
DATE: 13 NOV 2018
SCALE: As Noted
DESIGNED BY: hem
DRAWN BY: erl
CHECKED BY: HEM

BID SET

E2.00