



**City of
McMinnville**



City Council Retreat

December 2023



CITY OF
MCMINNVILLE
PARKS, RECREATION &
OPEN SPACE PLAN

DEIAC MEETING SEPT. 14, 2023

1. PROCESS & SCHEDULE
2. STRATEGIC FRAMEWORK
3. QUESTIONS & DISCUSSION
4. PROJECT PRIORITIES

YEAR-ROUND
OPPORTUNITIES
HEALTH
SOCIAL ISOLATION



GOALS & OBJECTIVES

- DEVELOPED MAINTENANCE
 - MAINTENANCE COSTS
 - REINVESTMENT & MAINT. COST
- SETTING UP CONCERNS FOR NEXT PLAN
 - PERIODIC UPDATES
 - CRITERIA
- ADDRESSING EQUITY BTWN NEW & EXISTING PARKS
 - PROVIDING DATA/RATIONALE FOR DECISIONS
- MAINT. (D2): APPLY CONCNS TO OLDER PARKS/FACILITIES
- ENSURE REC/MAINT. STAYS TO KEEP UP W/ GROWTH
- FACILITY LOS - NEED FOR INDOOR YEAR-ROUND SPACES
 - MULTI-USE INDOOR SPACE
- CONNECTIONS
 - ACTIVE TRAIL PLAN
 - LOP TRAIL
 - RIVER FRONT TRAIL
 - DANCER PARK CONNECTION
- BEING CREATIVE W/FACILITY USE
 - YEAR ROUND
 - MULTI SPORTS
- PERIODICALS
 - REQUIRED FOR NEW DEV.
- PARK DESIGN STANDARDS & GUIDELINES

CONNECTIONS

- GOLF COURSE
- WALK ROUTES TO PARKS (\$\$\$)
- LOP TRAIL
- RIVER FRONT TRAIL
- DANCER PARK CONNECTION

PLAY & GATHERING

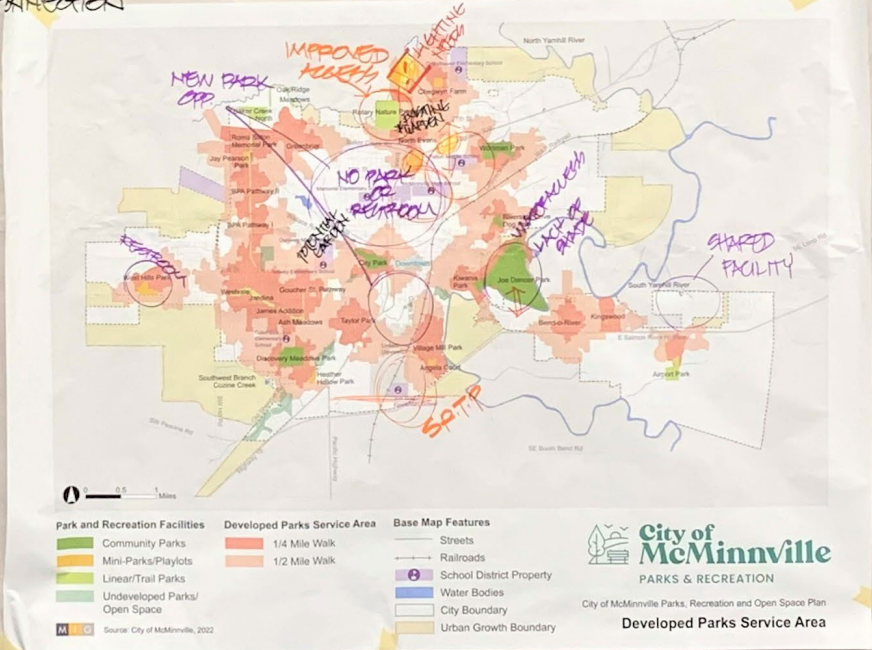
- INDOOR SPACES
- SPLASH PAD
- EXERCISE STATIONS (\$\$)
- COMMUNITY EMERGENCY PROXIMITY TO HIGHER DENSITY
- COVERED SPORT COURT
- GATHERING SPACES
- PICKERBALL

OUTDOOR POOL REINVESTMENT

- LIGHTING IMPROVEMENTS
- SAFE RESTROOM
- POOL PICKUP/REPLACEMENT

NATURE

- TREES
- HABITAT/WATER IMPROVEMENTS
- RIVER ACCESS
- WATER-LIVE LANDSCAPING
- EDIBLE LANDSCAPING



City of McMinnville
PARKS & RECREATION
City of McMinnville Parks, Recreation and Open Space Plan
Developed Parks Service Area

CITY OF
MCMINNVILLE
PARKS, RECREATION &
OPEN SPACE PLAN

DEI&C MTS SEPT. 14, 2023

1. PROCESS & SCHEDULE
2. STRATEGIC FRAMEWORK
3. QUESTIONS & DISCUSSION
4. PROJECT PRIORITIES

HEALTH
SOCIAL ISOLATION
OPPORTUNITIES
YEAR-ROUND



- MAINT. (22)
- ENSURE REC/MAINT. STAYS TO KEEP UP W/ GROWTH
- FACILITY LOGS - NEED FOR - INDOOR YEAR ROUND SPACES
- MULTI-USE INDOOR SPACE

GOALS & OBJECTIVES

CONNECTIONS

- GAP COURSE
- LINKS ROUTES TO PARKS (\$\$)
- ACTIVE TRAIL PLAN
- LOOP TRAIL

PLAY & GATHERING

- INDOOR SPACES
- SPLASH PAD
- EXERCISE STATIONS (\$\$)

OUTDOOR POOL

INDEPENDENT EX

- GATHERING SPACES

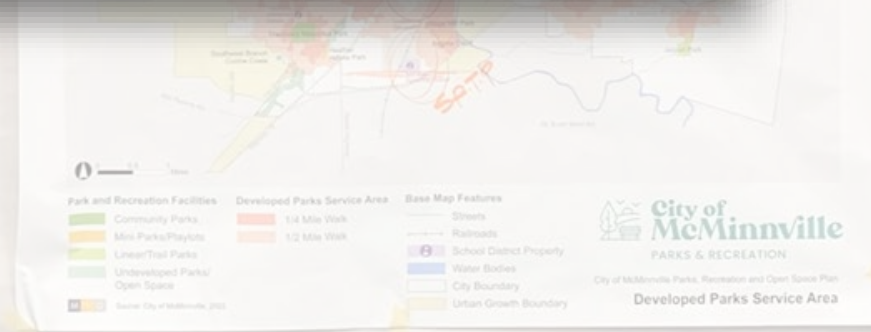
REINVESTMENT

- LIGHTING IMPROVEMENTS
- TRAIL CONNECTIONS
- SAFE RESTROOM
- POOL PERK/REPLACEMENT

NATURE

- TREES
- PERK/REPLACEMENT
- RIVER ACCESS
- WATERIVE LANDSCAPING
- EDIBLE LANDSCAPING

ADDRESSING EQUITY
BTWN. NEW & EXISTING PARKS
• PROVIDING DATA/RATIONALE FOR DECISIONS



“...not that many opportunities for aging kids with special needs. We often have to go to programs offered by other cities like Portland. There are programs within MAC but not really known to the community”

-interview participant

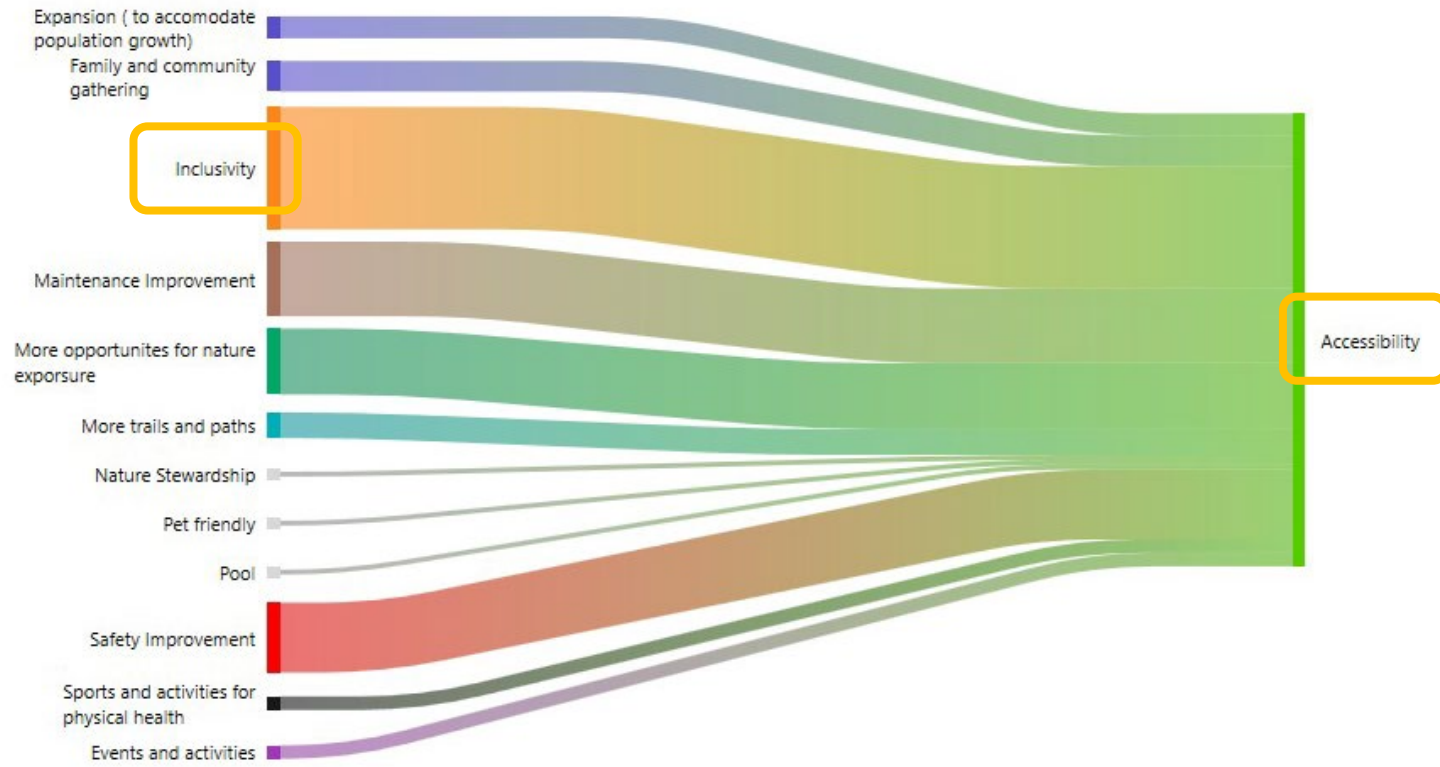
“We have an excellent parks system. As it improves, I believe the focus should be on expanding accessibility to open spaces and playgrounds for lower-income neighborhoods and multi-family housing which have less access to outside activities. Municipal parks are for *everyone*!”

– *survey respondent*

Priority Investments: Statewide Survey Results

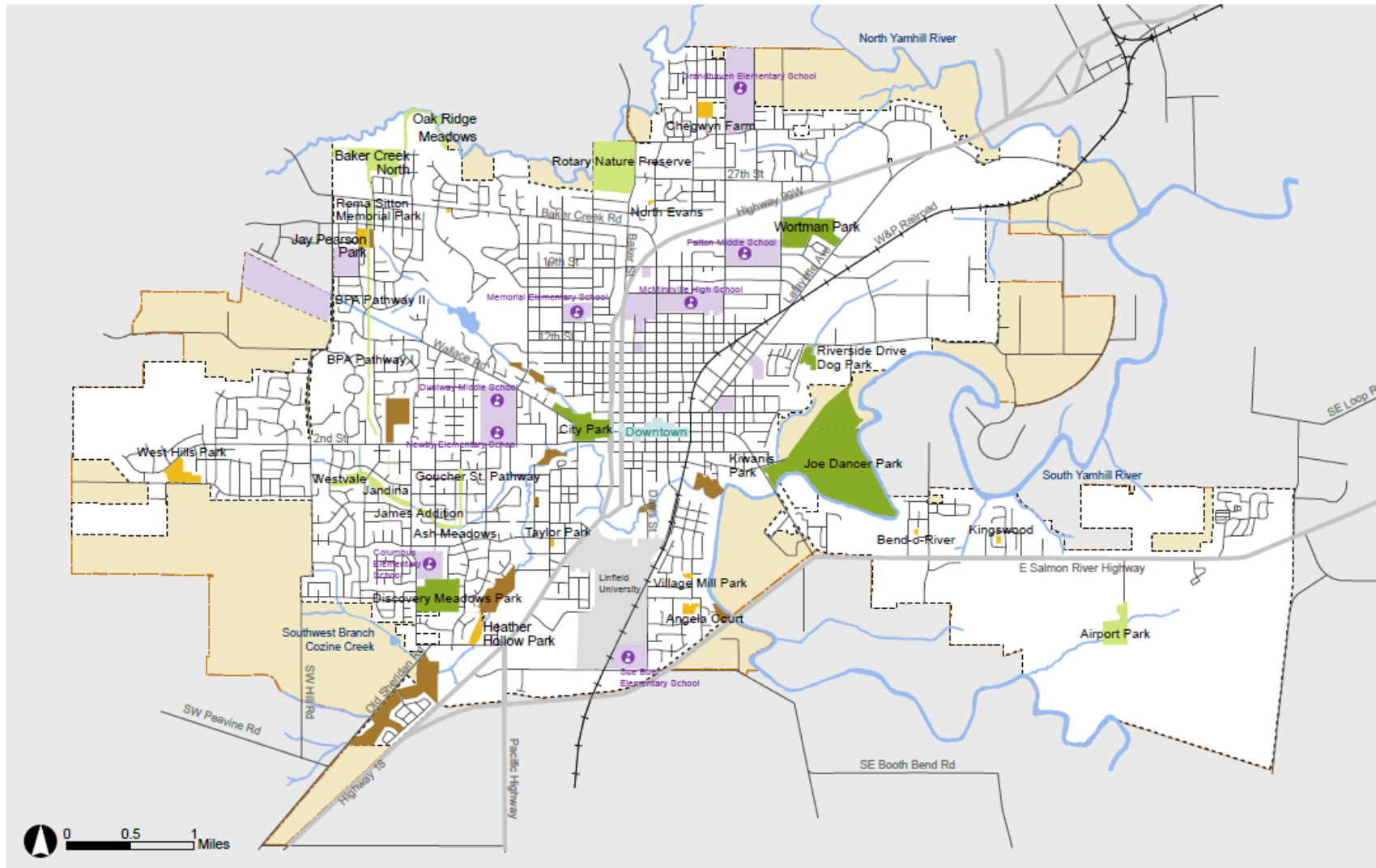
- Latino - Nature and wildlife viewing areas, children's playgrounds and play areas made of natural materials;
- Asian - Security cameras, restrooms;
- Families - Children's playgrounds and play areas made of natural materials, dirt/other soft surface walking trails and paths; and
- Low Income – Restrooms, dirt/other soft surface walking trails and paths.

Survey responses and “accessibility”



Equitable Park and Recreation Access

Defined as: the just and fair **quantity, proximity** and **connections** to quality **parks** and **green spaces**, recreation **facilities**, as well as **programs** that are safe, inclusive, culturally relevant and welcoming to everyone.



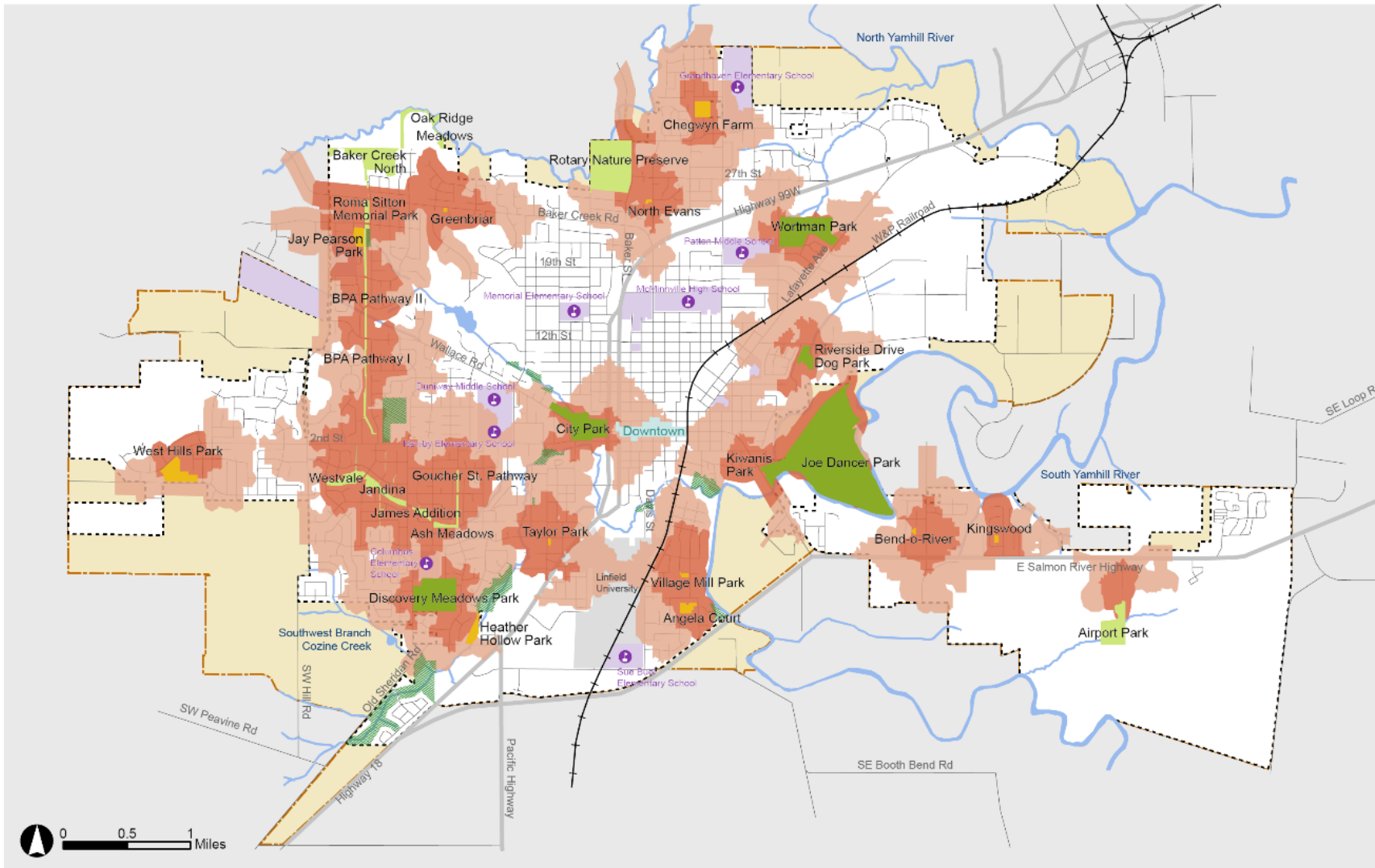
- Park and Recreation Facilities**
- Community Parks
 - Mini-Parks/Playlots
 - Linear/Trail Parks
 - Undeveloped Parks/Open Space

- Base Map Features**
- Major Streets
 - Streets
 - Railroads
 - School District Property
 - Water Bodies
 - City Boundary
 - Urban Growth Boundary



City of McMinnville Parks, Recreation and Open Space Plan

Map 1: Existing Parks and Recreation System



Park and Recreation Facilities

- Community Parks
- Mini-Parks/Playlots
- Linear/Trail Parks
- Undeveloped Parks/ Open Space

Source: City of McMinnville, 2022

Developed Parks Service Area

- 1/4 Mile Walk
- 1/2 Mile Walk

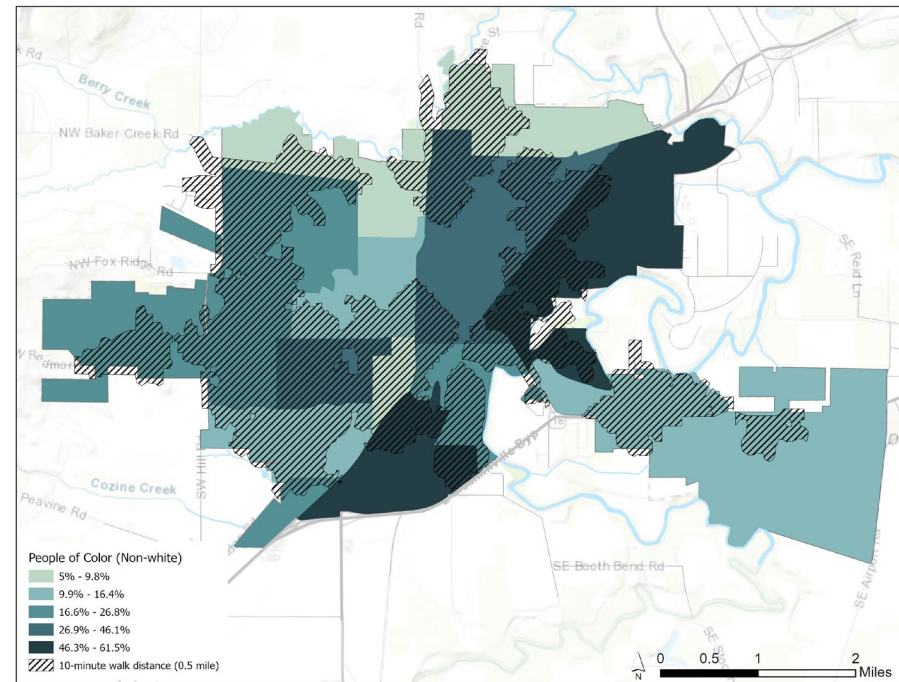
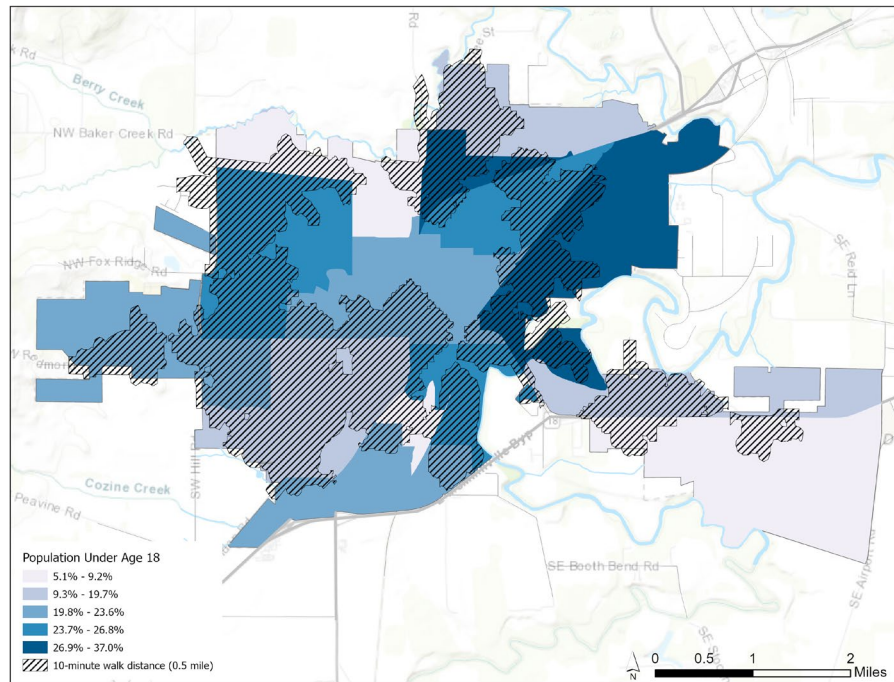
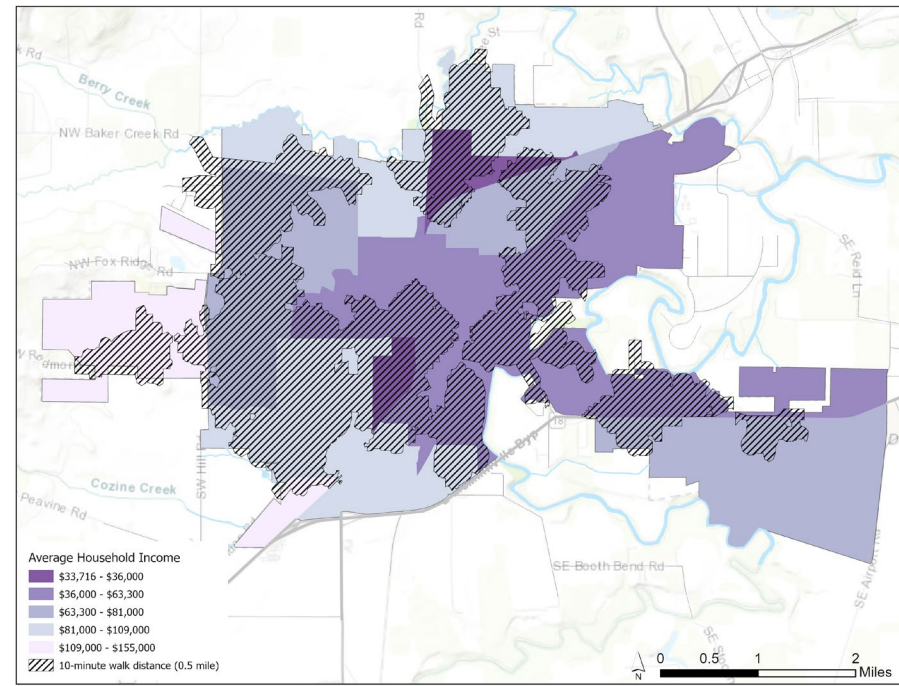
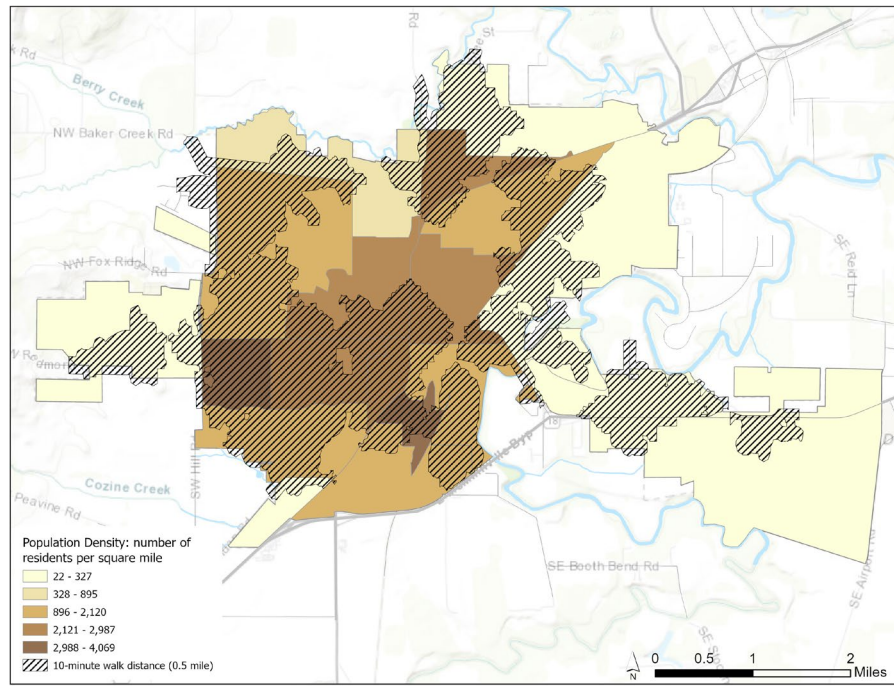
Base Map Features

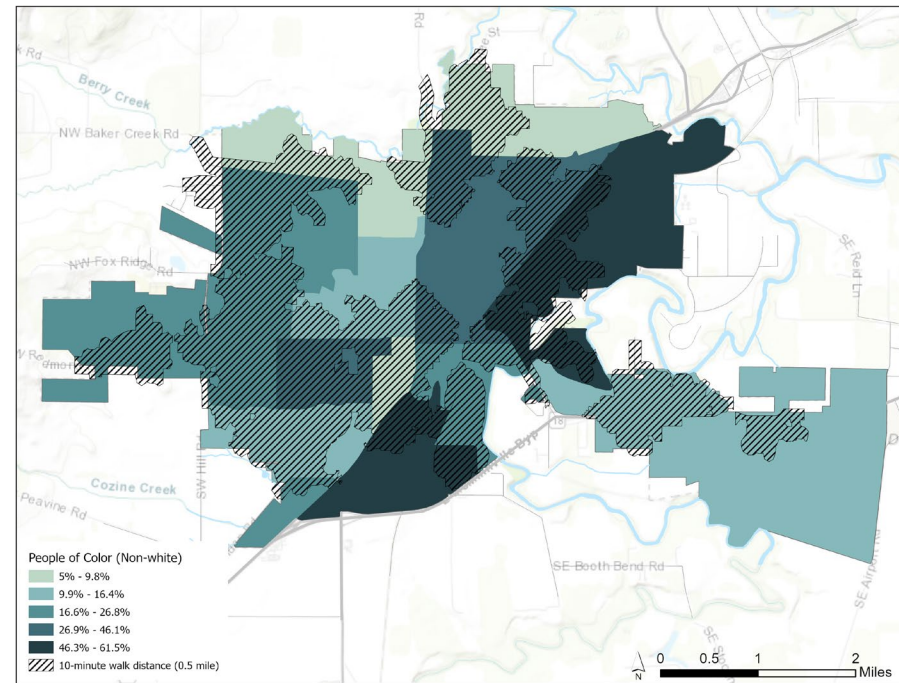
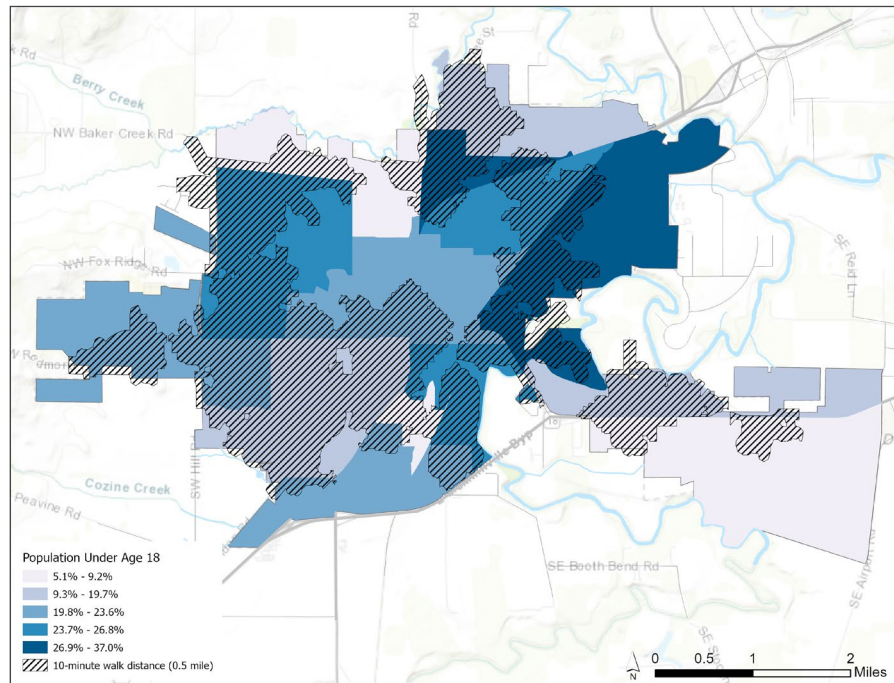
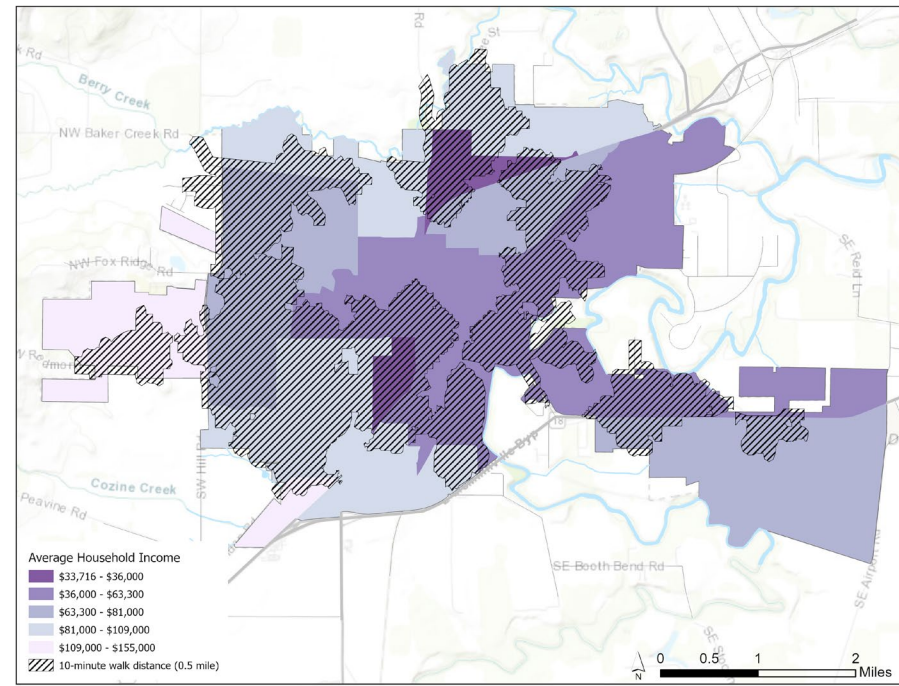
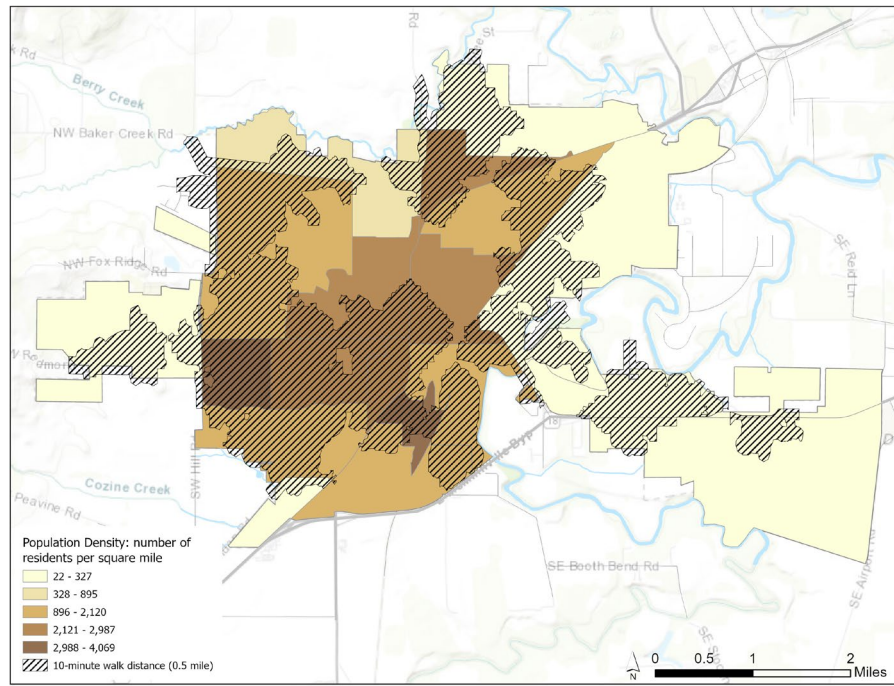
- Streets
- Railroads
- School District Property
- Water Bodies
- City Boundary
- Urban Growth Boundary



City of McMinnville Parks, Recreation and Open Space Plan

Developed Parks Service Area







City Council Retreat

December 2023

