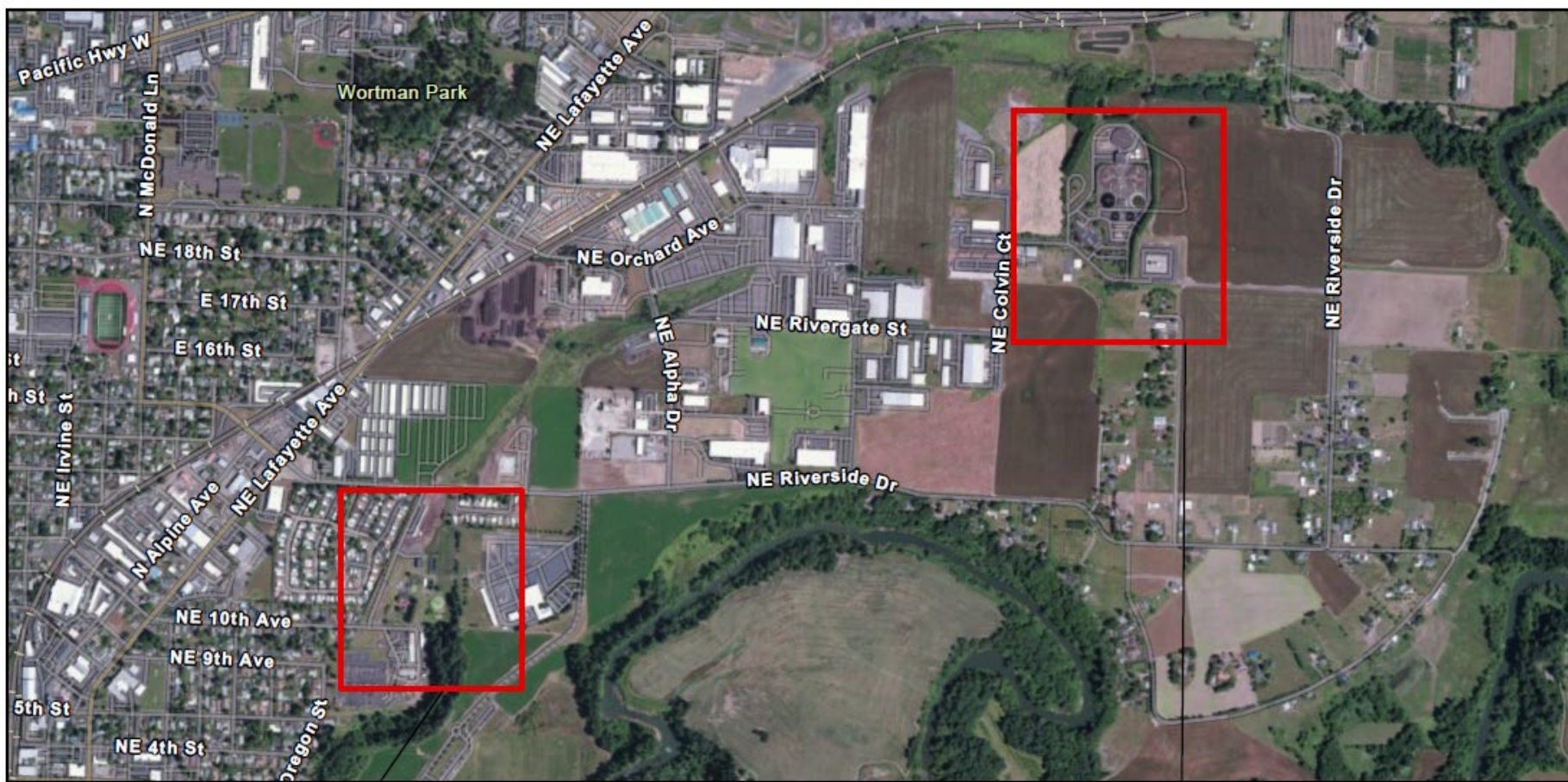


Public Works Space Planning Project 2022-1

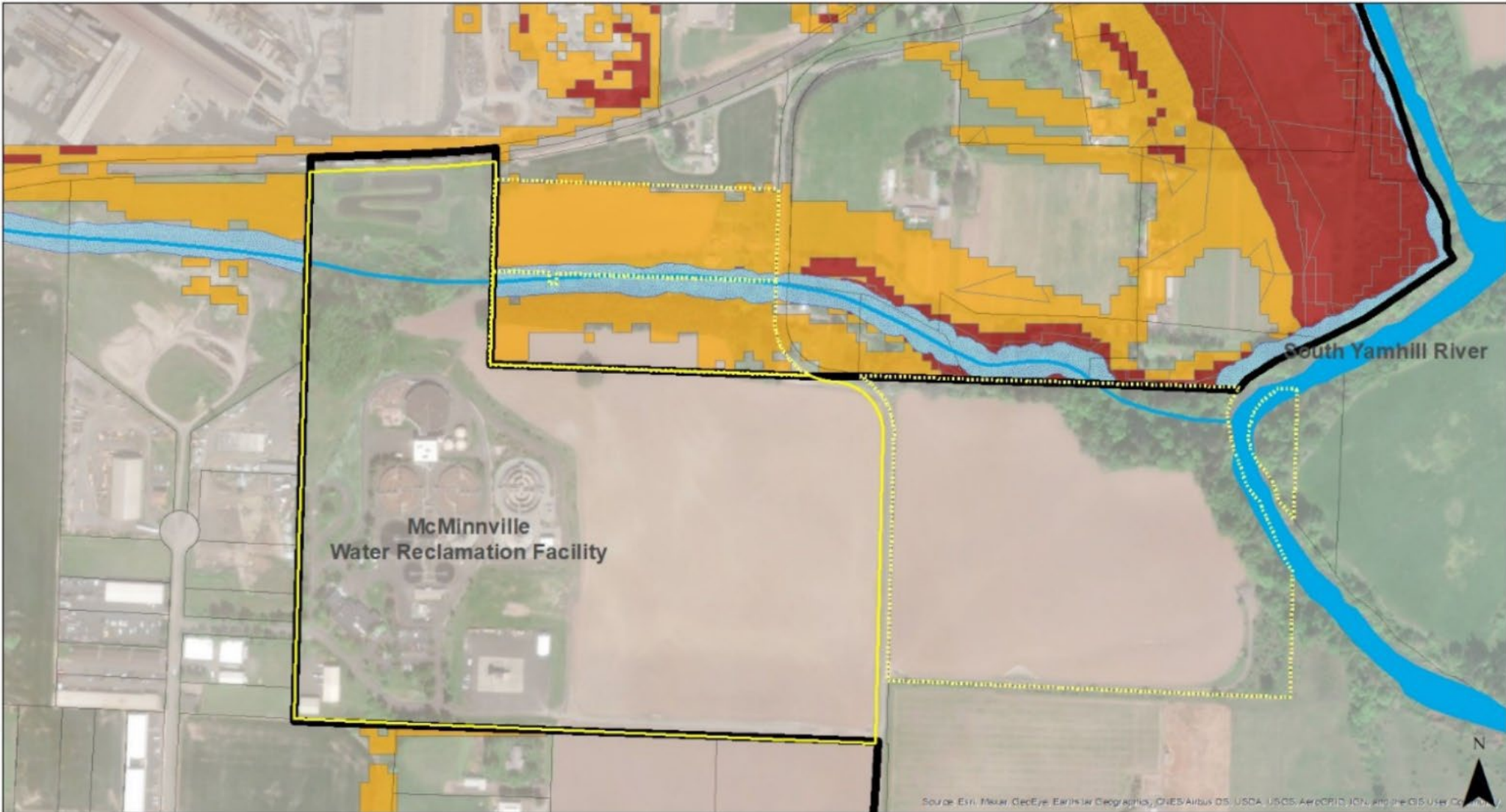


- Dog Park
- Former WWTP
- MW&L Headquarters
- Public Works Operations

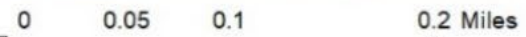
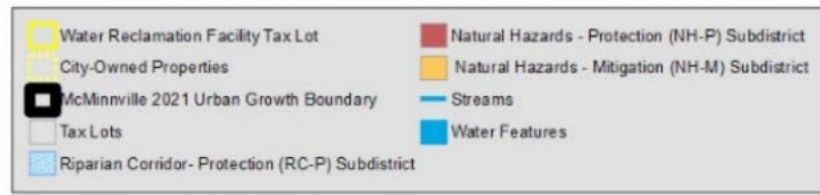


- WRF Administration Building



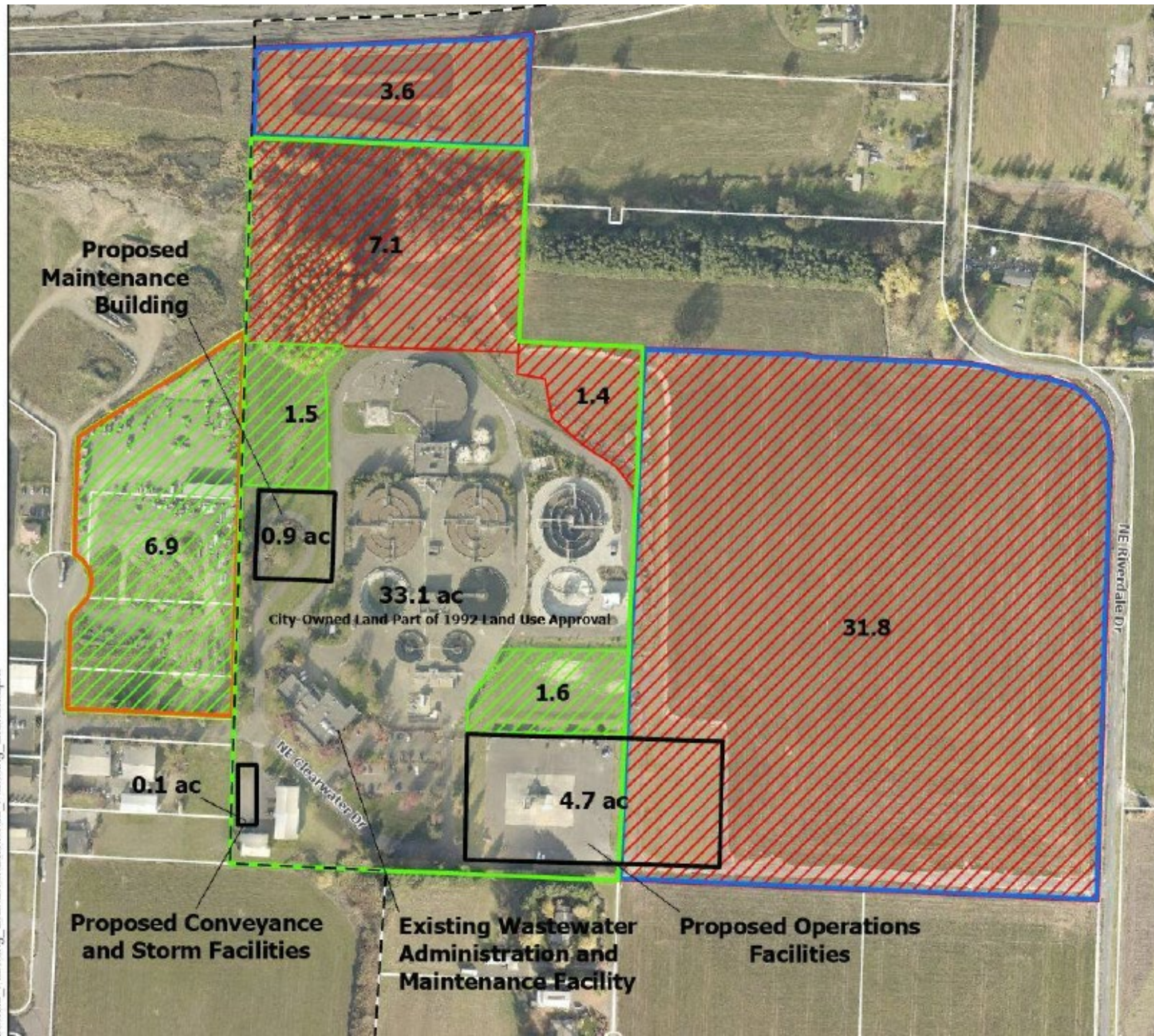


McMinnville Water Reclamation Facility Overlay Zones



Created by Winterbrook Planning
in coordination with the City of McMinnville

Imville_Planning_GISnew\McMillinville_Planning_GISnew.aprx



Proposed Maintenance Building

Proposed Conveyance and Storm Facilities

Existing Wastewater Administration and Maintenance Facility

Proposed Operations Facilities

33.1 ac
City-Owned Land Part of 1992 Land Use Approval

NE Riverdale Dr

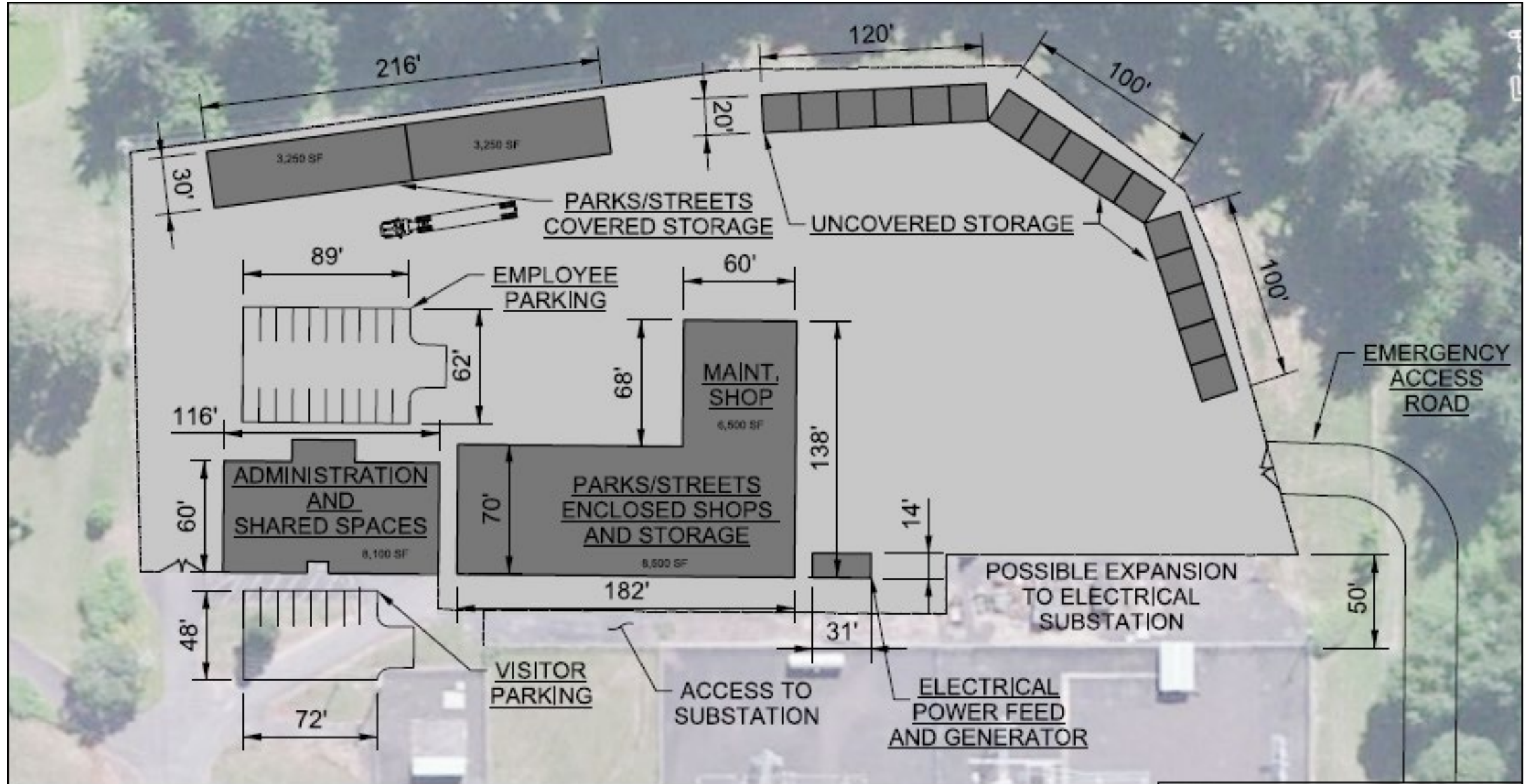
NE Clearwater Dr

Alternative #1 PW Operations only



ALTERNATIVE 1
PRIMARY AREA
OF PROPOSED
UPGRADE

Alternative #1 PW Operations only



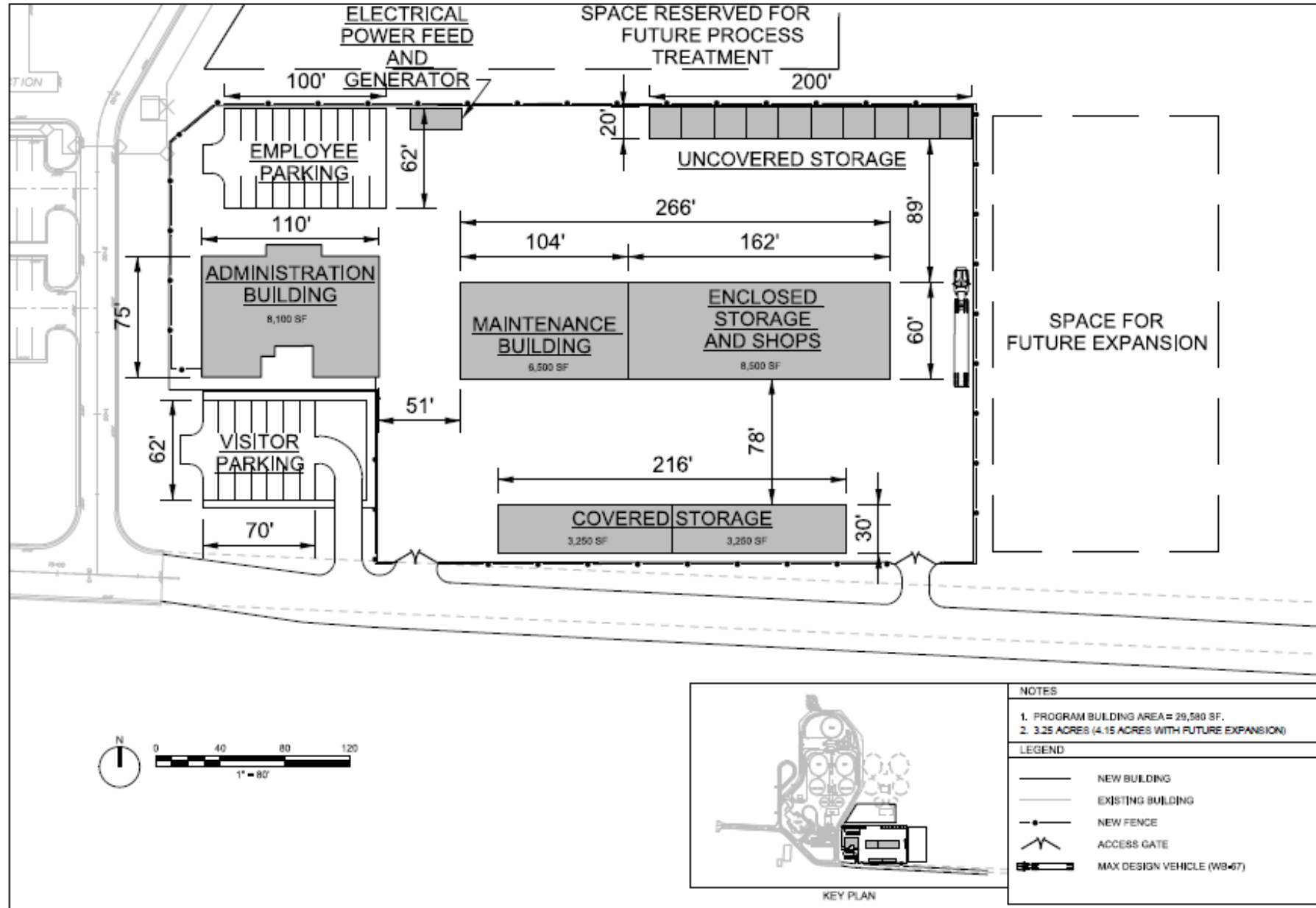
Alternative #1 PW Operations only



Alternative #2 PW Operations



Alternative #2 PW Operations



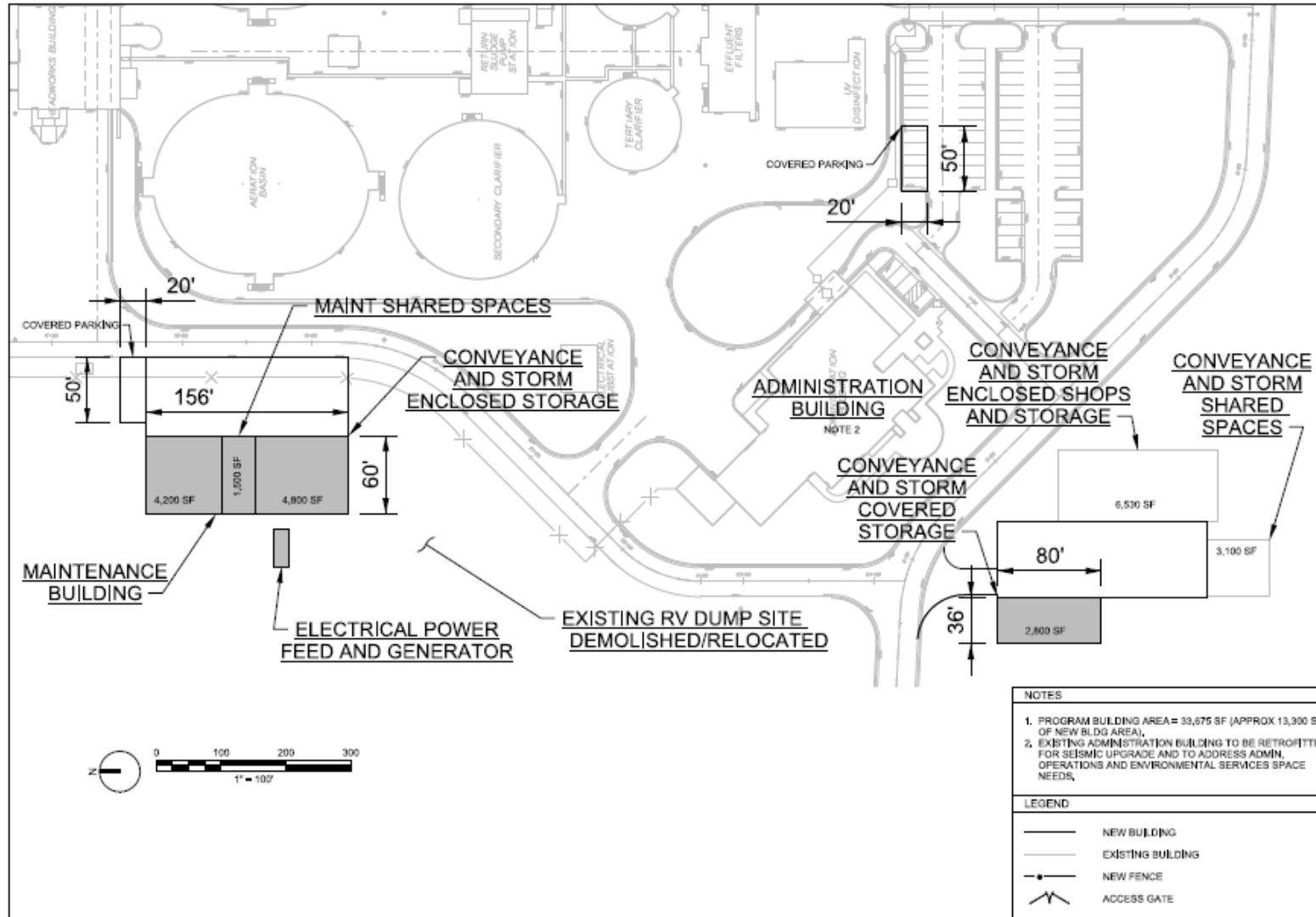
Alternative #2 PW Operations



Alternative #3 WWS



Alternative #3 WWS



NOTES	
1.	PROGRAM BUILDING AREA = 33,675 SF (APPROX 13,300 SF OF NEW BLDG AREA),
2.	EXISTING ADMINISTRATION BUILDING TO BE RETROFITTED FOR SEISMIC UPGRADE AND TO ADDRESS ADMIN, OPERATIONS AND ENVIRONMENTAL SERVICES SPACE NEEDS,

LEGEND	
	NEW BUILDING
	EXISTING BUILDING
	NEW FENCE
	ACCESS GATE

CITY OF MCMINNVILLE
 PUBLIC WORKS - WASTEWATER SERVICES
 FIGURE 3 - ALTERNATIVE 3

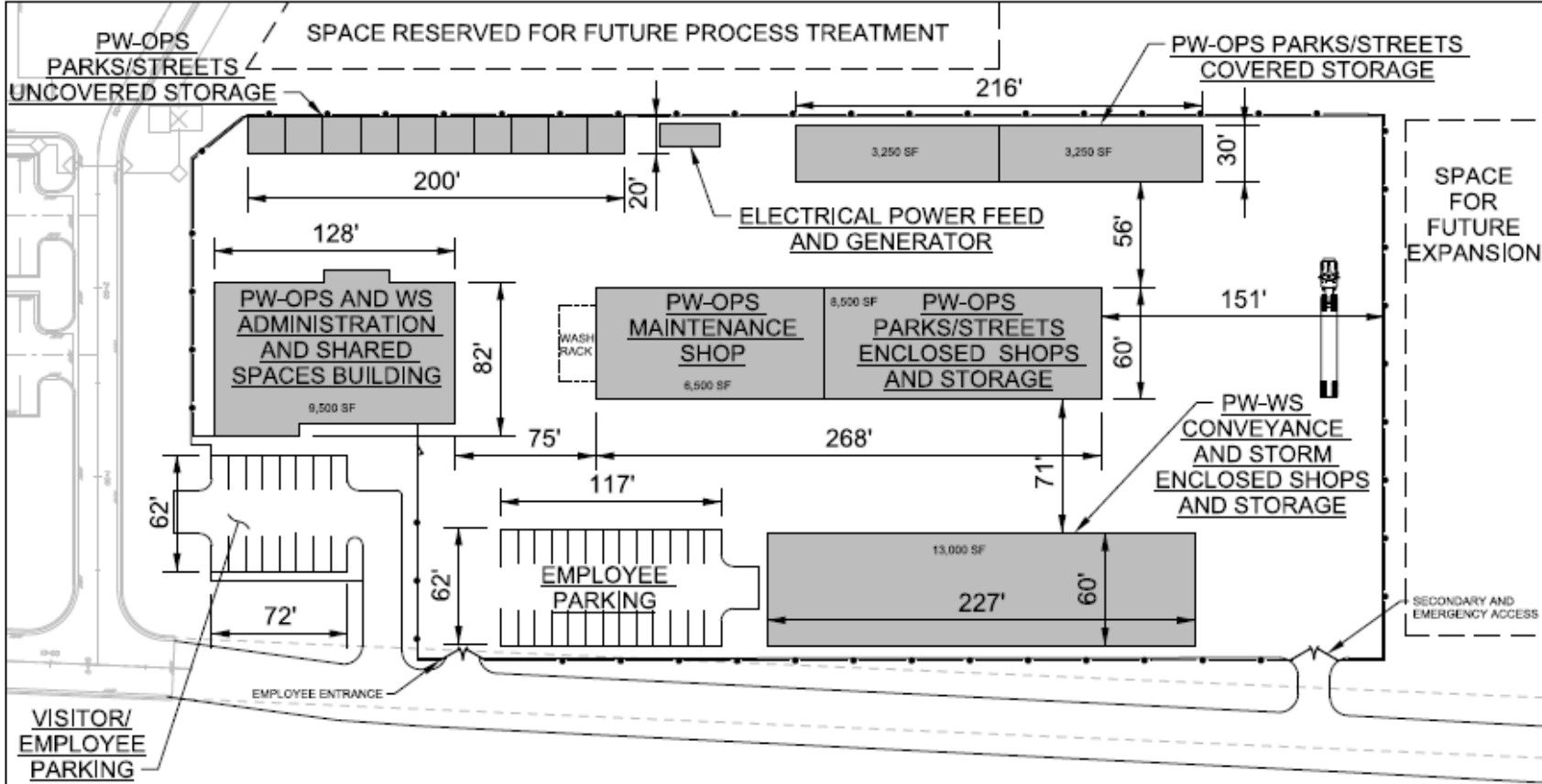
Alternative #3 WWS



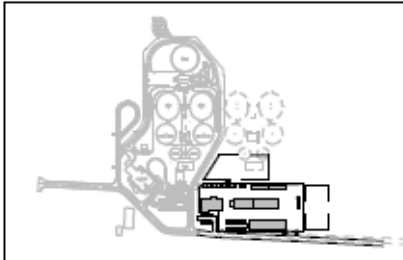
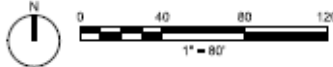
Alternative #4 PW Operations and WWS



Alternative #4 PW Operations and WWS



VISITOR/
EMPLOYEE
PARKING



KEY PLAN

NOTES	
1.	PROGRAM BUILDING AREA = 29,580 SF FOR PW-OPS AND 17,820 SF FOR PW-WS.
2.	EXISTING PW-WS ADMINISTRATION AND CONVEYANCE BUILDINGS NOT SHOWN.
3.	SITE AREA = APPROX. 4.20 ACRES (5.10 ACRES WITH FUTURE EXPANSION).

LEGEND	
	NEW BUILDING
	EXISTING BUILDING
	NEW FENCE
	ACCESS GATE
	MAX DESIGN VEHICLE (WB-47)

CITY OF MCMINNVILLE
PUBLIC WORKS - OPERATIONS AND WASTEWATER SERVICES
ALTERNATIVE 4 - SITE PLAN

Alternative #4 PW Operations and WWS



Conceptual Cost Estimates

- **Alternative #1 for Operations:_____ \$18,800,000**
 - Range (-30% to +50%) \$13,100,000 to \$28,000,000
- **Alternative #2 for Operations:_____ \$19,800,000**
 - Range (-30% to +50%) \$13,900,000 to \$29,700,000
- **Alternative #3 for WWS:_____ \$11,700,000**
 - Range (-30% to +50%) \$13,900,000 to \$29,700,000
- **Alternative #4 for Operations and WWS:___ \$20,600,000**
 - Range (-30% to +50%) \$13,900,000 to \$29,700,000

Public Works Facility Options:

- Alternatives #1 and #3 _____ **\$30,400,000**
- Alternatives #2 and #3 _____ **\$31,500,000**
- Alternative #4 _____ **\$20,600,000**

Note: Cost estimates are conceptual.