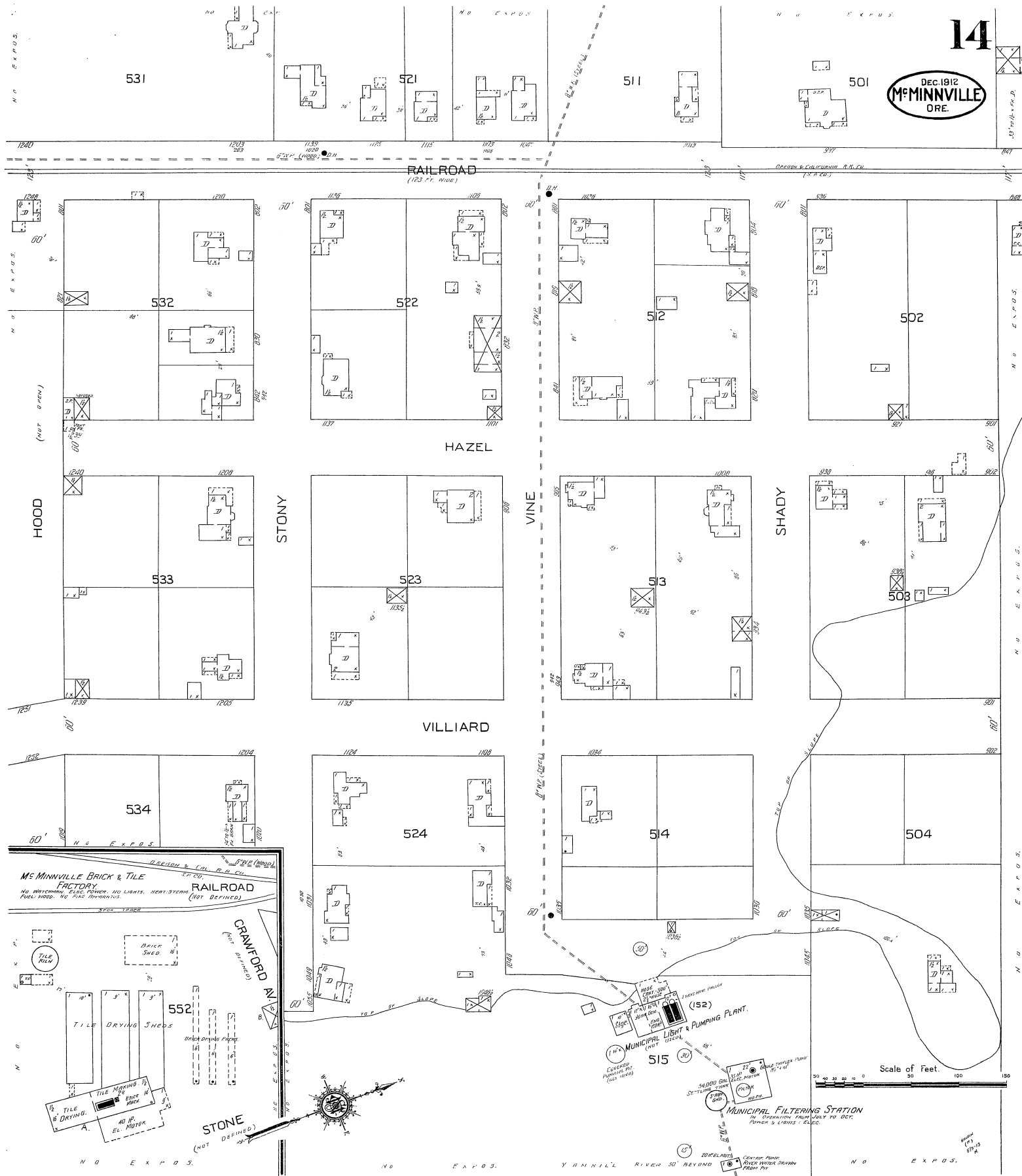


Dec. 1912  
McMINVILLE  
ORE.



531

521

511

501

532

522

512

502

533

523

513

503

534

524

514

504

552

515

STONE  
(NOT DEFINED)

MUNICIPAL FILTERING STATION  
CONSTRUCTED FROM 1907 TO 1909.  
CAPACITY 1,000,000 GAL. PER DAY.

MUNICIPAL LIGHT & PUMPING PLANT.

McMINVILLE BRICK & TILE  
FACTORY  
NO WATERWORKS, FIRE POWER, NO LIGHTS, HEAT-STEAM (NOT DEFINED).  
POOL HOOD. NO SIDE THROUGHTS.

RAILROAD  
(123 FT. WIDE)

HAZEL

VILLIARD

SHADY

VINE

STONY

HOOD

Scale of Feet.  
0 50 100 150



MUNICIPAL LIGHT & PUMPING PLANT.  
CONSTRUCTED FROM 1907 TO 1909.  
CAPACITY 1,000,000 GAL. PER DAY.

MUNICIPAL FILTERING STATION  
CONSTRUCTED FROM 1907 TO 1909.  
CAPACITY 1,000,000 GAL. PER DAY.

McMINVILLE BRICK & TILE  
FACTORY  
NO WATERWORKS, FIRE POWER, NO LIGHTS, HEAT-STEAM (NOT DEFINED).  
POOL HOOD. NO SIDE THROUGHTS.

RAILROAD  
(123 FT. WIDE)

HAZEL

VILLIARD

SHADY

VINE

STONY

HOOD

Scale of Feet.  
0 50 100 150



MUNICIPAL LIGHT & PUMPING PLANT.  
CONSTRUCTED FROM 1907 TO 1909.  
CAPACITY 1,000,000 GAL. PER DAY.

MUNICIPAL FILTERING STATION  
CONSTRUCTED FROM 1907 TO 1909.  
CAPACITY 1,000,000 GAL. PER DAY.

McMINVILLE BRICK & TILE  
FACTORY  
NO WATERWORKS, FIRE POWER, NO LIGHTS, HEAT-STEAM (NOT DEFINED).  
POOL HOOD. NO SIDE THROUGHTS.

RAILROAD  
(123 FT. WIDE)

HAZEL

VILLIARD

SHADY

VINE

STONY

HOOD

Scale of Feet.  
0 50 100 150



MUNICIPAL LIGHT & PUMPING PLANT.  
CONSTRUCTED FROM 1907 TO 1909.  
CAPACITY 1,000,000 GAL. PER DAY.

MUNICIPAL FILTERING STATION  
CONSTRUCTED FROM 1907 TO 1909.  
CAPACITY 1,000,000 GAL. PER DAY.

McMINVILLE BRICK & TILE  
FACTORY  
NO WATERWORKS, FIRE POWER, NO LIGHTS, HEAT-STEAM (NOT DEFINED).  
POOL HOOD. NO SIDE THROUGHTS.

RAILROAD  
(123 FT. WIDE)

HAZEL

VILLIARD

SHADY

VINE

STONY

HOOD

Scale of Feet.  
0 50 100 150



MUNICIPAL LIGHT & PUMPING PLANT.  
CONSTRUCTED FROM 1907 TO 1909.  
CAPACITY 1,000,000 GAL. PER DAY.

MUNICIPAL FILTERING STATION  
CONSTRUCTED FROM 1907 TO 1909.  
CAPACITY 1,000,000 GAL. PER DAY.

McMINVILLE BRICK & TILE  
FACTORY  
NO WATERWORKS, FIRE POWER, NO LIGHTS, HEAT-STEAM (NOT DEFINED).  
POOL HOOD. NO SIDE THROUGHTS.

RAILROAD  
(123 FT. WIDE)

HAZEL

VILLIARD

SHADY

VINE

STONY

HOOD

Scale of Feet.  
0 50 100 150



MUNICIPAL LIGHT & PUMPING PLANT.  
CONSTRUCTED FROM 1907 TO 1909.  
CAPACITY 1,000,000 GAL. PER DAY.

MUNICIPAL FILTERING STATION  
CONSTRUCTED FROM 1907 TO 1909.  
CAPACITY 1,000,000 GAL. PER DAY.

McMINVILLE BRICK & TILE  
FACTORY  
NO WATERWORKS, FIRE POWER, NO LIGHTS, HEAT-STEAM (NOT DEFINED).  
POOL HOOD. NO SIDE THROUGHTS.

RAILROAD  
(123 FT. WIDE)

HAZEL

VILLIARD

SHADY

VINE

STONY

HOOD

Scale of Feet.  
0 50 100 150



MUNICIPAL LIGHT & PUMPING PLANT.  
CONSTRUCTED FROM 1907 TO 1909.  
CAPACITY 1,000,000 GAL. PER DAY.

MUNICIPAL FILTERING STATION  
CONSTRUCTED FROM 1907 TO 1909.  
CAPACITY 1,000,000 GAL. PER DAY.

McMINVILLE BRICK & TILE  
FACTORY  
NO WATERWORKS, FIRE POWER, NO LIGHTS, HEAT-STEAM (NOT DEFINED).  
POOL HOOD. NO SIDE THROUGHTS.

RAILROAD  
(123 FT. WIDE)

HAZEL

VILLIARD

SHADY

VINE

STONY

HOOD

Scale of Feet.  
0 50 100 150



MUNICIPAL LIGHT & PUMPING PLANT.  
CONSTRUCTED FROM 1907 TO 1909.  
CAPACITY 1,000,000 GAL. PER DAY.

MUNICIPAL FILTERING STATION  
CONSTRUCTED FROM 1907 TO 1909.  
CAPACITY 1,000,000 GAL. PER DAY.

McMINVILLE BRICK & TILE  
FACTORY  
NO WATERWORKS, FIRE POWER, NO LIGHTS, HEAT-STEAM (NOT DEFINED).  
POOL HOOD. NO SIDE THROUGHTS.

RAILROAD  
(123 FT. WIDE)

HAZEL

VILLIARD

SHADY

VINE

STONY

HOOD

Scale of Feet.  
0 50 100 150



MUNICIPAL LIGHT & PUMPING PLANT.  
CONSTRUCTED FROM 1907 TO 1909.  
CAPACITY 1,000,000 GAL. PER DAY.

MUNICIPAL FILTERING STATION  
CONSTRUCTED FROM 1907 TO 1909.  
CAPACITY 1,000,000 GAL. PER DAY.

McMINVILLE BRICK & TILE  
FACTORY  
NO WATERWORKS, FIRE POWER, NO LIGHTS, HEAT-STEAM (NOT DEFINED).  
POOL HOOD. NO SIDE THROUGHTS.

RAILROAD  
(123 FT. WIDE)

HAZEL

VILLIARD

SHADY

VINE

STONY

HOOD

Scale of Feet.  
0 50 100 150



MUNICIPAL LIGHT & PUMPING PLANT.  
CONSTRUCTED FROM 1907 TO 1909.  
CAPACITY 1,000,000 GAL. PER DAY.

MUNICIPAL FILTERING STATION  
CONSTRUCTED FROM 1907 TO 1909.  
CAPACITY 1,000,000 GAL. PER DAY.

McMINVILLE BRICK & TILE  
FACTORY  
NO WATERWORKS, FIRE POWER, NO LIGHTS, HEAT-STEAM (NOT DEFINED).  
POOL HOOD. NO SIDE THROUGHTS.

RAILROAD  
(123 FT. WIDE)

HAZEL

VILLIARD

SHADY

VINE

STONY

HOOD

Scale of Feet.  
0 50 100 150



MUNICIPAL LIGHT & PUMPING PLANT.  
CONSTRUCTED FROM 1907 TO 1909.  
CAPACITY 1,000,000 GAL. PER DAY.

MUNICIPAL FILTERING STATION  
CONSTRUCTED FROM 1907 TO 1909.  
CAPACITY 1,000,000 GAL. PER DAY.

McMINVILLE BRICK & TILE  
FACTORY  
NO WATERWORKS, FIRE POWER, NO LIGHTS, HEAT-STEAM (NOT DEFINED).  
POOL HOOD. NO SIDE THROUGHTS.

RAILROAD  
(123 FT. WIDE)

HAZEL

VILLIARD

SHADY

VINE

STONY

HOOD

Scale of Feet.  
0 50 100 150



MUNICIPAL LIGHT & PUMPING PLANT.  
CONSTRUCTED FROM 1907 TO 1909.  
CAPACITY 1,000,000 GAL. PER DAY.

MUNICIPAL FILTERING STATION  
CONSTRUCTED FROM 1907 TO 1909.  
CAPACITY 1,000,000 GAL. PER DAY.

McMINVILLE BRICK & TILE  
FACTORY  
NO WATERWORKS, FIRE POWER, NO LIGHTS, HEAT-STEAM (NOT DEFINED).  
POOL HOOD. NO SIDE THROUGHTS.

RAILROAD  
(123 FT. WIDE)

HAZEL

VILLIARD

SHADY

VINE

STONY

HOOD

Scale of Feet.  
0 50 100 150



MUNICIPAL LIGHT & PUMPING PLANT.  
CONSTRUCTED FROM 1907 TO 1909.  
CAPACITY 1,000,000 GAL. PER DAY.

MUNICIPAL FILTERING STATION  
CONSTRUCTED FROM 1907 TO 1909.  
CAPACITY 1,000,000 GAL. PER DAY.

McMINVILLE BRICK & TILE  
FACTORY  
NO WATERWORKS, FIRE POWER, NO LIGHTS, HEAT-STEAM (NOT DEFINED).  
POOL HOOD. NO SIDE THROUGHTS.

RAILROAD  
(123 FT. WIDE)

HAZEL

VILLIARD

SHADY

VINE

STONY

HOOD

Scale of Feet.  
0 50 100 150



MUNICIPAL LIGHT & PUMPING PLANT.  
CONSTRUCTED FROM 1907 TO 1909.  
CAPACITY 1,000,000 GAL. PER DAY.

MUNICIPAL FILTERING STATION  
CONSTRUCTED FROM 1907 TO 1909.  
CAPACITY 1,000,000 GAL. PER DAY.

McMINVILLE BRICK & TILE  
FACTORY  
NO WATERWORKS, FIRE POWER, NO LIGHTS, HEAT-STEAM (NOT DEFINED).  
POOL HOOD. NO SIDE THROUGHTS.

RAILROAD  
(123 FT. WIDE)

HAZEL

VILLIARD

SHADY

VINE

STONY

HOOD

Scale of Feet.  
0 50 100 150



MUNICIPAL LIGHT & PUMPING PLANT.  
CONSTRUCTED FROM 1907 TO 1909.  
CAPACITY 1,000,000 GAL. PER DAY.

MUNICIPAL FILTERING STATION  
CONSTRUCTED FROM 1907 TO 1909.  
CAPACITY 1,000,000 GAL. PER DAY.

McMINVILLE BRICK & TILE  
FACTORY  
NO WATERWORKS, FIRE POWER, NO LIGHTS, HEAT-STEAM (NOT DEFINED).  
POOL HOOD. NO SIDE THROUGHTS.

RAILROAD  
(123 FT. WIDE)

HAZEL

VILLIARD

SHADY

VINE

STONY

HOOD

Scale of Feet.  
0 50 100 150



MUNICIPAL LIGHT & PUMPING PLANT.  
CONSTRUCTED FROM 1907 TO 1909.  
CAPACITY 1,000,000 GAL. PER DAY.

MUNICIPAL FILTERING STATION  
CONSTRUCTED FROM 1907 TO 1909.  
CAPACITY 1,000,000 GAL. PER DAY.

McMINVILLE BRICK & TILE  
FACTORY  
NO WATERWORKS, FIRE POWER, NO LIGHTS, HEAT-STEAM (NOT DEFINED).  
POOL HOOD. NO SIDE THROUGHTS.

RAILROAD  
(123 FT. WIDE)

HAZEL

VILLIARD

SHADY

VINE

STONY

HOOD

Scale of Feet.  
0 50 100 150



MUNICIPAL LIGHT & PUMPING PLANT.  
CONSTRUCTED FROM 1907 TO 1909.  
CAPACITY 1,000,000 GAL. PER DAY.

MUNICIPAL FILTERING STATION  
CONSTRUCTED FROM 1907 TO 1909.  
CAPACITY 1,000,000 GAL. PER DAY.

McMINVILLE BRICK & TILE  
FACTORY  
NO WATERWORKS, FIRE POWER, NO LIGHTS, HEAT-STEAM (NOT DEFINED).  
POOL HOOD. NO SIDE THROUGHTS.

RAILROAD  
(123 FT. WIDE)

HAZEL

VILLIARD

SHADY

VINE

STONY

HOOD

Scale of Feet.  
0 50 100 150



MUNICIPAL LIGHT & PUMPING PLANT.  
CONSTRUCTED FROM 1907 TO 1909.  
CAPACITY 1,000,000 GAL. PER DAY.

MUNICIPAL FILTERING STATION  
CONSTRUCTED FROM 1907 TO 1909.  
CAPACITY 1,000,000 GAL. PER DAY.

McMINVILLE BRICK & TILE  
FACTORY  
NO WATERWORKS, FIRE POWER, NO LIGHTS, HEAT-STEAM (NOT DEFINED).  
POOL HOOD. NO SIDE THROUGHTS.

RAILROAD  
(123 FT. WIDE)

HAZEL

VILLIARD

SHADY

VINE

STONY

HOOD

Scale of Feet.  
0 50 100 150



MUNICIPAL LIGHT & PUMPING PLANT.  
CONSTRUCTED FROM 1907 TO 1909.  
CAPACITY 1,000,000 GAL. PER DAY.

MUNICIPAL FILTERING STATION  
CONSTRUCTED FROM 1907 TO 1909.  
CAPACITY 1,000,000 GAL. PER DAY.

McMINVILLE BRICK & TILE  
FACTORY  
NO WATERWORKS, FIRE POWER, NO LIGHTS, HEAT-STEAM (NOT DEFINED).  
POOL HOOD. NO SIDE THROUGHTS.

RAILROAD  
(123 FT. WIDE)

HAZEL

VILLIARD

SHADY