

# INDEX.

STREETS.		INDEX
A St.,.....	First to Fifth	2
B St.,.....	North of First to Fifth	2
B St.,.....	East Side, Fifth to South of Lincoln	6
C St.,.....	North of First to Fifth	2
C St.,.....	Fifth to Lincoln	5
County Road,.....	near First	4
D St.,.....	North of First to Fifth	3
D St.,.....	East Side, Fifth to South of Lincoln	6
D St.,.....	West " " " " " "	4
D St.,.....	Fifth to South of Warren	3
E St.,.....	North of First to Fifth	3
E St.,.....	Fifth to South of Warren	3
F St.,.....	North of First to Fifth	3
F St.,.....	West Side, Fifth to South of Warren	3
Fifth, North Side,.....	A St. to D St.	3
" " " " " "	D St. to G	4
" " " " " "	B St. to E	4
First,.....	West of A St. to D	3
" " " " " "	D St. to G	4
" " " " " "	G St. to East of J	4
Fourth,.....	A St. to D	3
" " " " " "	D St. to G	4
" " " " " "	G St. to East of J	4
G St.,.....	North of First to Fifth	3
G St.,.....	East Side, Fifth to South of Warren	3
G St.,.....	West " " " " " "	4
Grant,.....	near Lincoln	5
H St.,.....	North of First to South of Fourth	4
I St.,.....	First to South of Fourth	4
J St.,.....	First to South of Fourth	4
Lincoln,.....	B St. to D St.	5
Second,.....	West of A St. to D St.	3
" " " " " "	D St. to G	4
" " " " " "	G St. to East of J	4

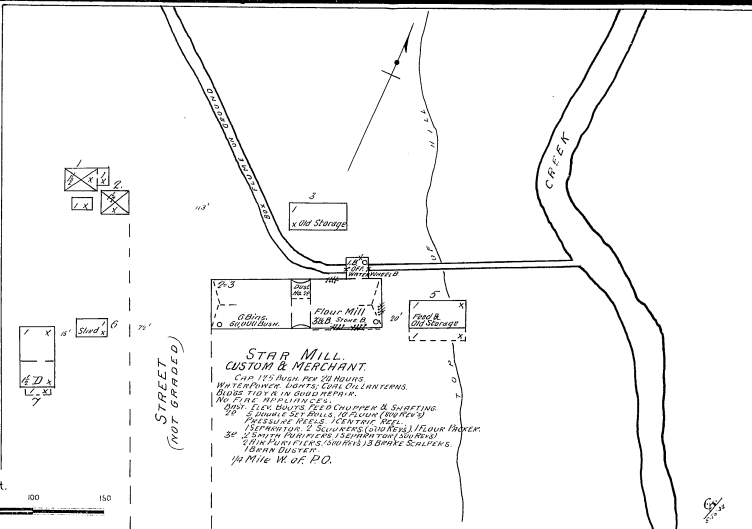
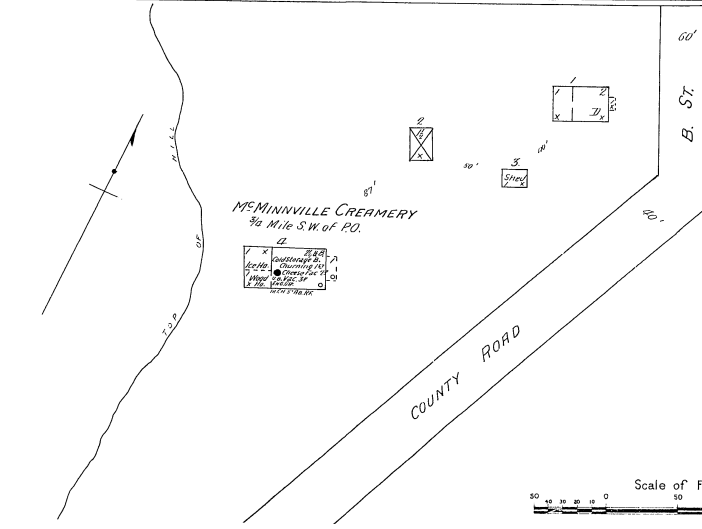
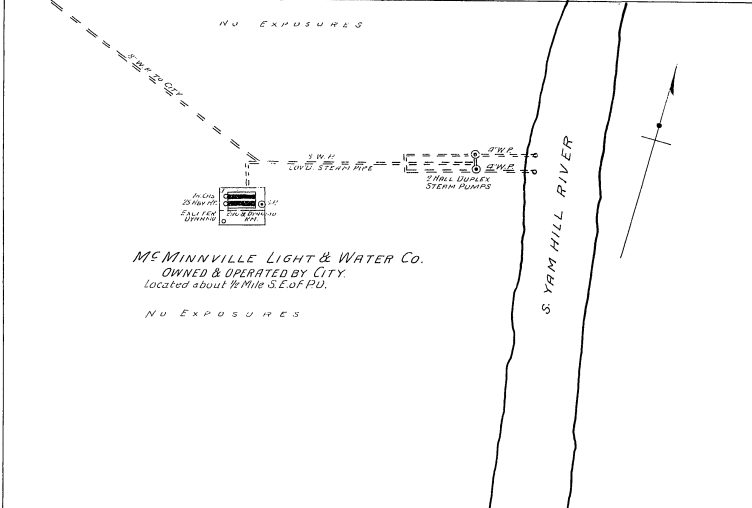
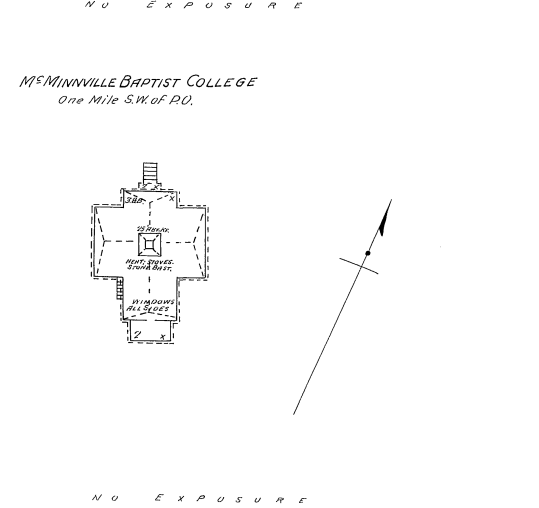
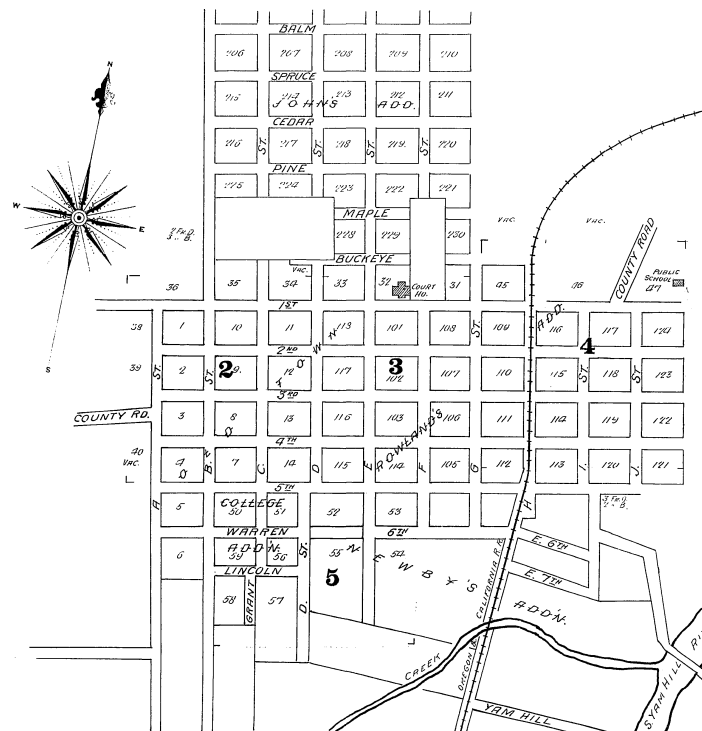
SPECIALS.		INDEX
Baptist Church,.....	B	5
Catholic Church,.....	O	5
Christian Church,.....		2
City Hall,.....		3
Livery & Feed Stable,.....		3
Clark, B., Furniture Factory,.....		3
Court House,.....		3
Episcopal Church,.....	E	3
Galloway & Ganger, Grain Warehouses,.....	G	4
Garrison's Opera House,.....		2
Gates & Henry's Livery,.....		3
Public School,.....		4
Jones & Adams, Lumber Yard,.....	J	2
McMinville Baptist College,.....	M	1
" Creamery,.....	"	1
" Flouring Mill,.....	"	4
" Hotel,.....	"	1
" Light & Water Co.,.....	"	2
" Public School,.....	"	4
Methodist Episcopal Church,.....		3
Oregon & California R. R. Depots,.....	O	4
St. Charles Hotel,.....	S	2
Star Mill,.....	S	1
Slow & Co's Lumber Yard,.....		2
Union Block,.....	U	3
West Side House,.....	W	3



NOTE  
 Water supplied for domestic and fire purposes by means owned & operated by city. Two fire hydrants, steam engines, and other facilities for fire protection. Fire hydrants are located at the following places: ...

KEY	
1" = 20'	1" = 10'
2" = 20'	3" = 20'
4" = 20'	6" = 20'
8" = 20'	12" = 20'
12" = 20'	18" = 20'
18" = 20'	24" = 20'
24" = 20'	30" = 20'
30" = 20'	36" = 20'
36" = 20'	42" = 20'
42" = 20'	48" = 20'
48" = 20'	54" = 20'
54" = 20'	60" = 20'
60" = 20'	66" = 20'
66" = 20'	72" = 20'
72" = 20'	78" = 20'
78" = 20'	84" = 20'
84" = 20'	90" = 20'
90" = 20'	96" = 20'
96" = 20'	102" = 20'
102" = 20'	108" = 20'
108" = 20'	114" = 20'
114" = 20'	120" = 20'
120" = 20'	126" = 20'
126" = 20'	132" = 20'
132" = 20'	138" = 20'
138" = 20'	144" = 20'
144" = 20'	150" = 20'
150" = 20'	156" = 20'
156" = 20'	162" = 20'
162" = 20'	168" = 20'
168" = 20'	174" = 20'
174" = 20'	180" = 20'
180" = 20'	186" = 20'
186" = 20'	192" = 20'
192" = 20'	198" = 20'
198" = 20'	204" = 20'
204" = 20'	210" = 20'
210" = 20'	216" = 20'
216" = 20'	222" = 20'
222" = 20'	228" = 20'
228" = 20'	234" = 20'
234" = 20'	240" = 20'
240" = 20'	246" = 20'
246" = 20'	252" = 20'
252" = 20'	258" = 20'
258" = 20'	264" = 20'
264" = 20'	270" = 20'
270" = 20'	276" = 20'
276" = 20'	282" = 20'
282" = 20'	288" = 20'
288" = 20'	294" = 20'
294" = 20'	300" = 20'
300" = 20'	306" = 20'
306" = 20'	312" = 20'
312" = 20'	318" = 20'
318" = 20'	324" = 20'
324" = 20'	330" = 20'
330" = 20'	336" = 20'
336" = 20'	342" = 20'
342" = 20'	348" = 20'
348" = 20'	354" = 20'
354" = 20'	360" = 20'

\* Indicates only one side of Street shown.



Scale of Feet.  
 0 50 100 150