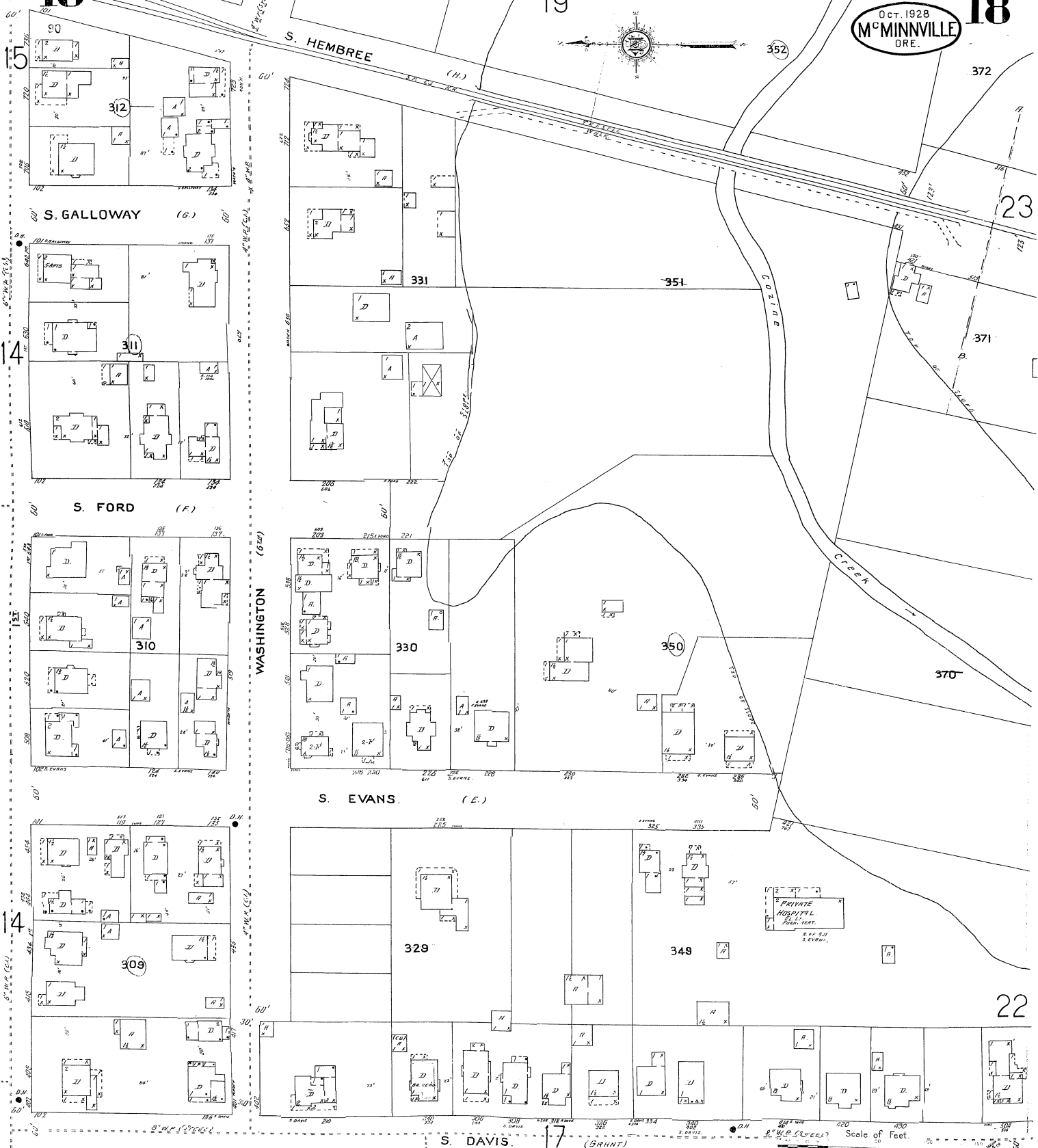


ORE 50.6  
**18**

19

OCT. 1928  
**M<sup>o</sup> MINNVILLE**  
ORE.

(200)  
**18**



WASHINGTON (W.)

S. HEMBREE (H.)

S. GALLOWAY (G.)

S. FORD (F.)

S. EVANS (E.)

S. DAVIS (D.)

Scale of Feet.

Copyright 1928 by the Southern Map Co.