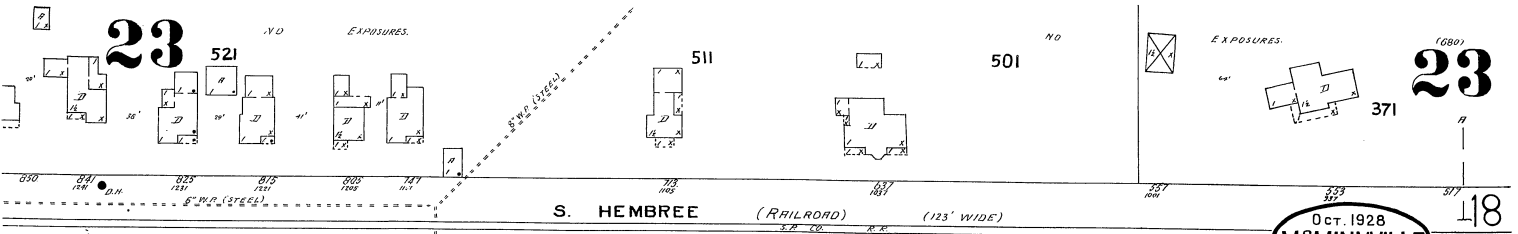


23

23



S. HEMBREE (RAILROAD) (123' WIDE)

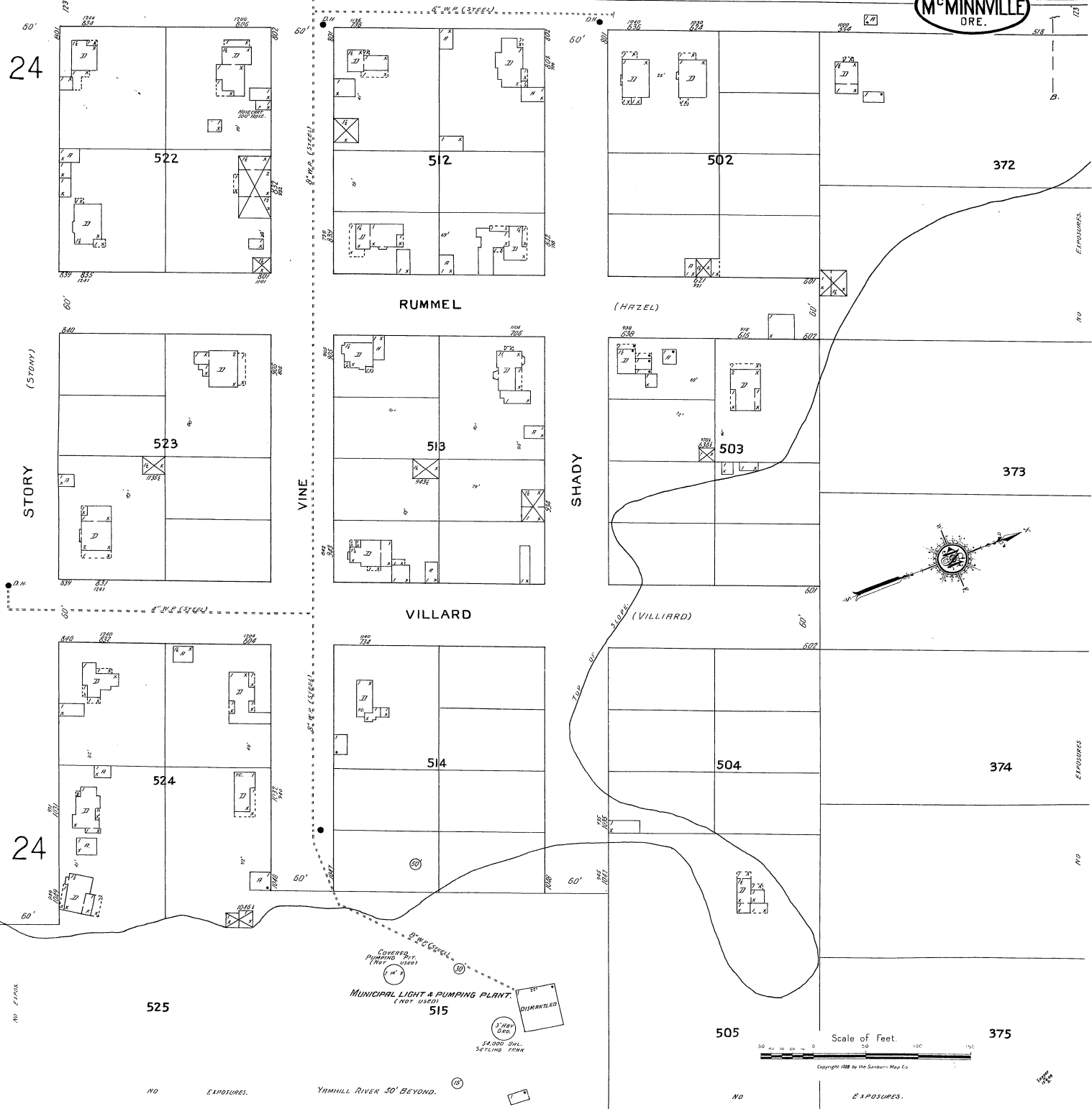
Oct. 1928  
M<sup>c</sup>MINNVILLE  
ORE.

118

24

STORY (STONY)

24



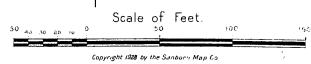
COVERED  
PUMPING PLANT  
(NOT USED)

3' X 4' X 6'  
SINKING TANK

DISMANTLED

MUNICIPAL LIGHT & PUMPING PLANT.  
(NOT USED)

515



YAMHILL RIVER 30' BEYOND.