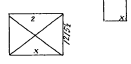


5

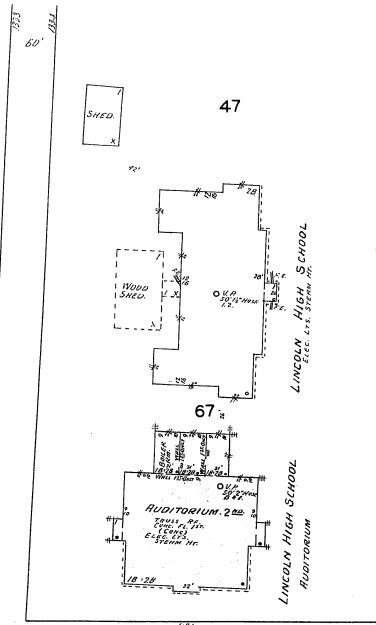
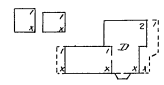
45

46



65

66



47

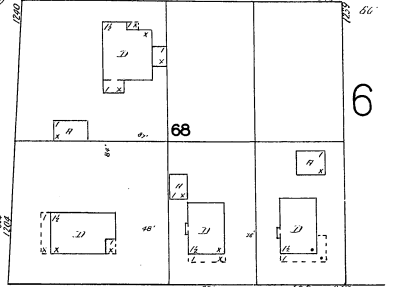
67

2

OCT. 1928
M^C MINNVILLE
ORE.



13TH (MORTON)



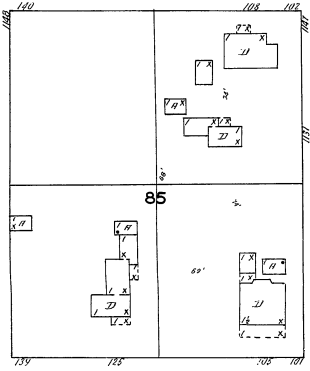
68

6

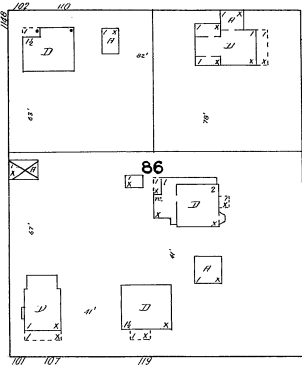
4

W. 12TH (W. FISH)

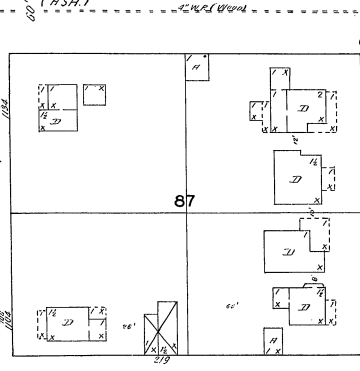
12TH



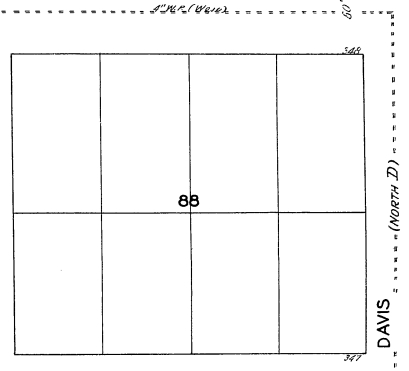
85



86



87



88

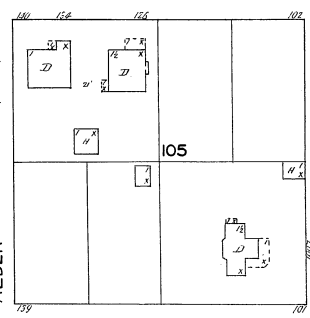
BAKER (NORTH B)

COWLS (NORTH C) (60' WIDE)

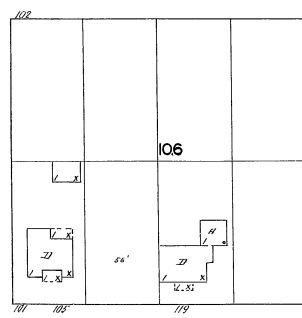
DAVIS (NORTH D)

W. 11TH (W. BALM)

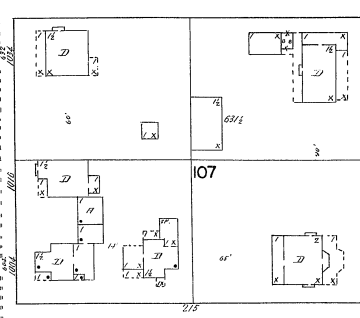
11TH



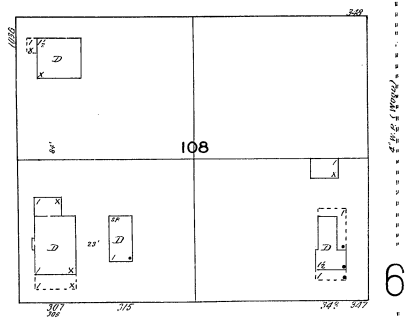
105



106



107



108

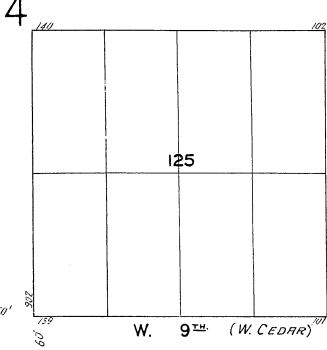
ALDER (ELEM.)

ADAMS (LAUREL)

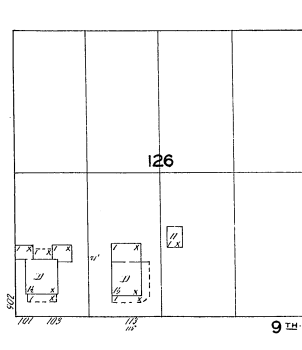
Scale of Feet.

W. 10TH (W. SPRUCE)

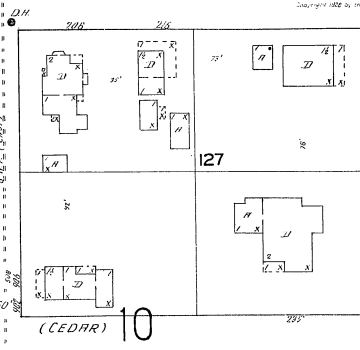
10TH (SPRUCE)



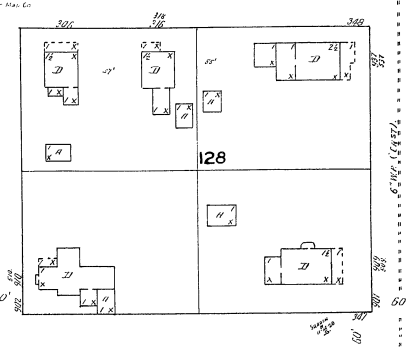
125



126



127



128

W. 9TH (W. CEDAR)

9TH

(CEDAR) 10

6