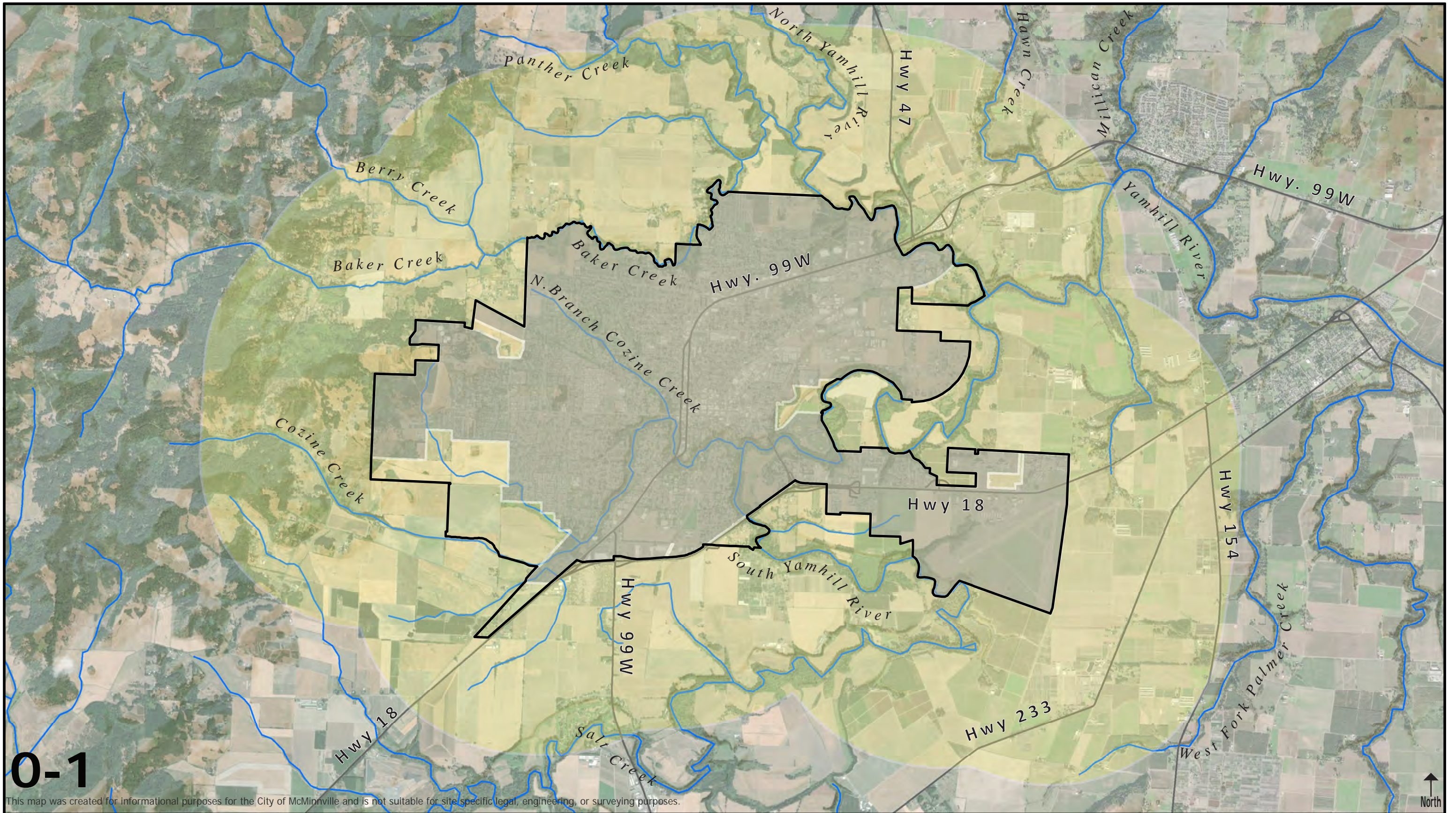


REVISED
Natural Hazards Inventory &
Management Program Options and Recommendations

**Appendix 3: REVISED Natural Hazard Inventory and Natural
Hazard Overlay Maps**

Prepared by:





0-1

This map was created for informational purposes for the City of McMinnville and is not suitable for site specific legal, engineering, or surveying purposes.

**McMinnville
Natural Hazards
Study Area**

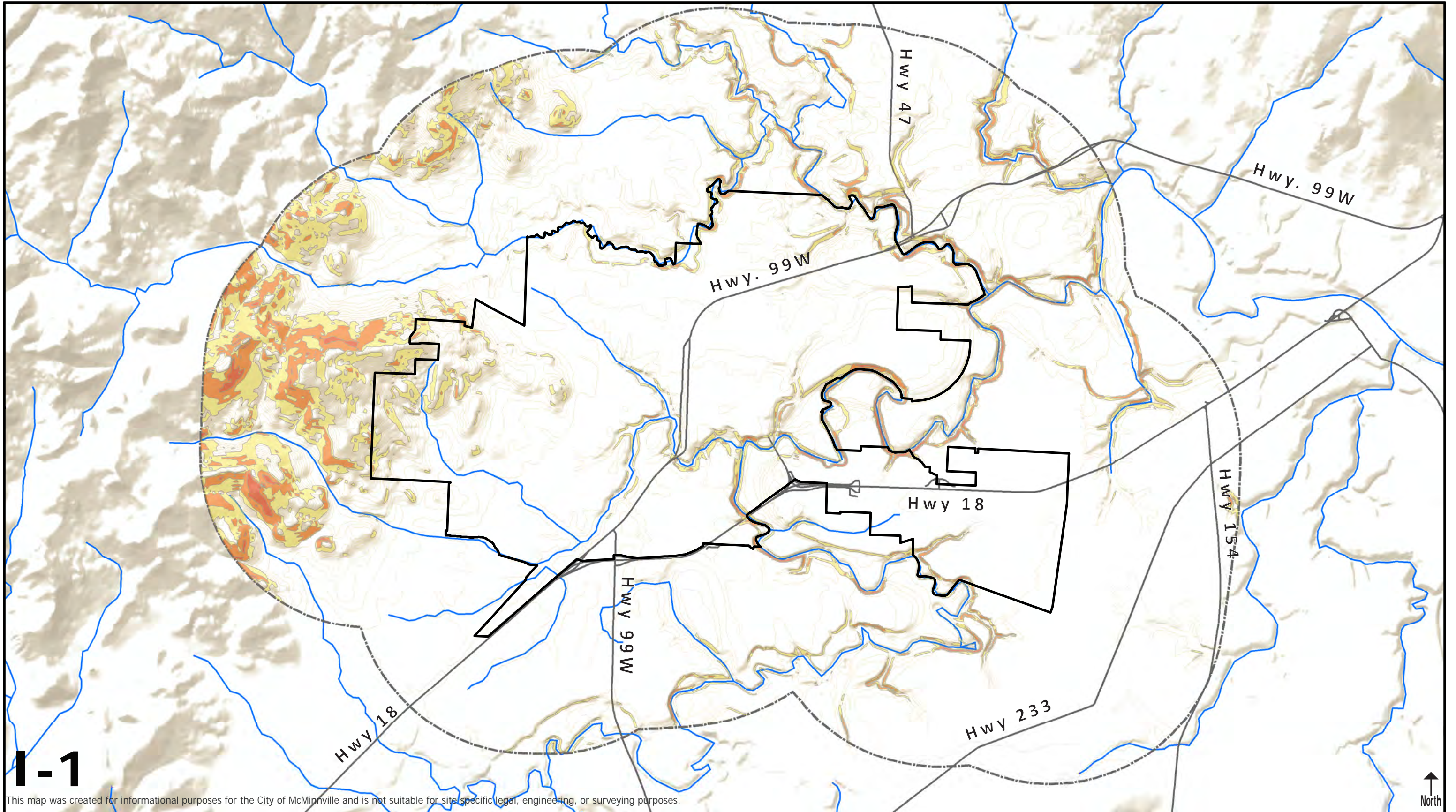
- McMinnville 2021 Urban Growth Boundary
- Study Area (1.5 Miles from 2019 UGB)
- McMinnville 2019 Urban Growth Boundary
- Major Roads
- Rivers & Streams

Miles 0 0.25 0.5 1 1.5 2

Created by Winterbrook Planning in coordination with the City of McMinnville

City of McMinnville

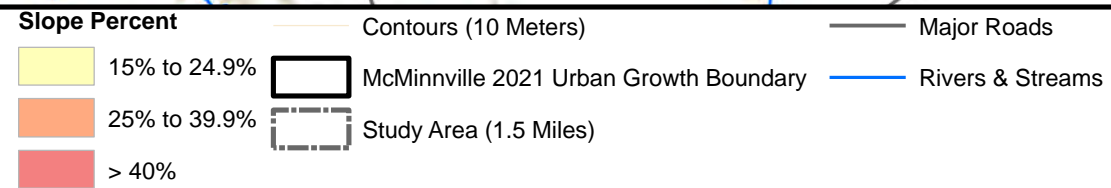
 Last Revised: June 22, 2021



1-1

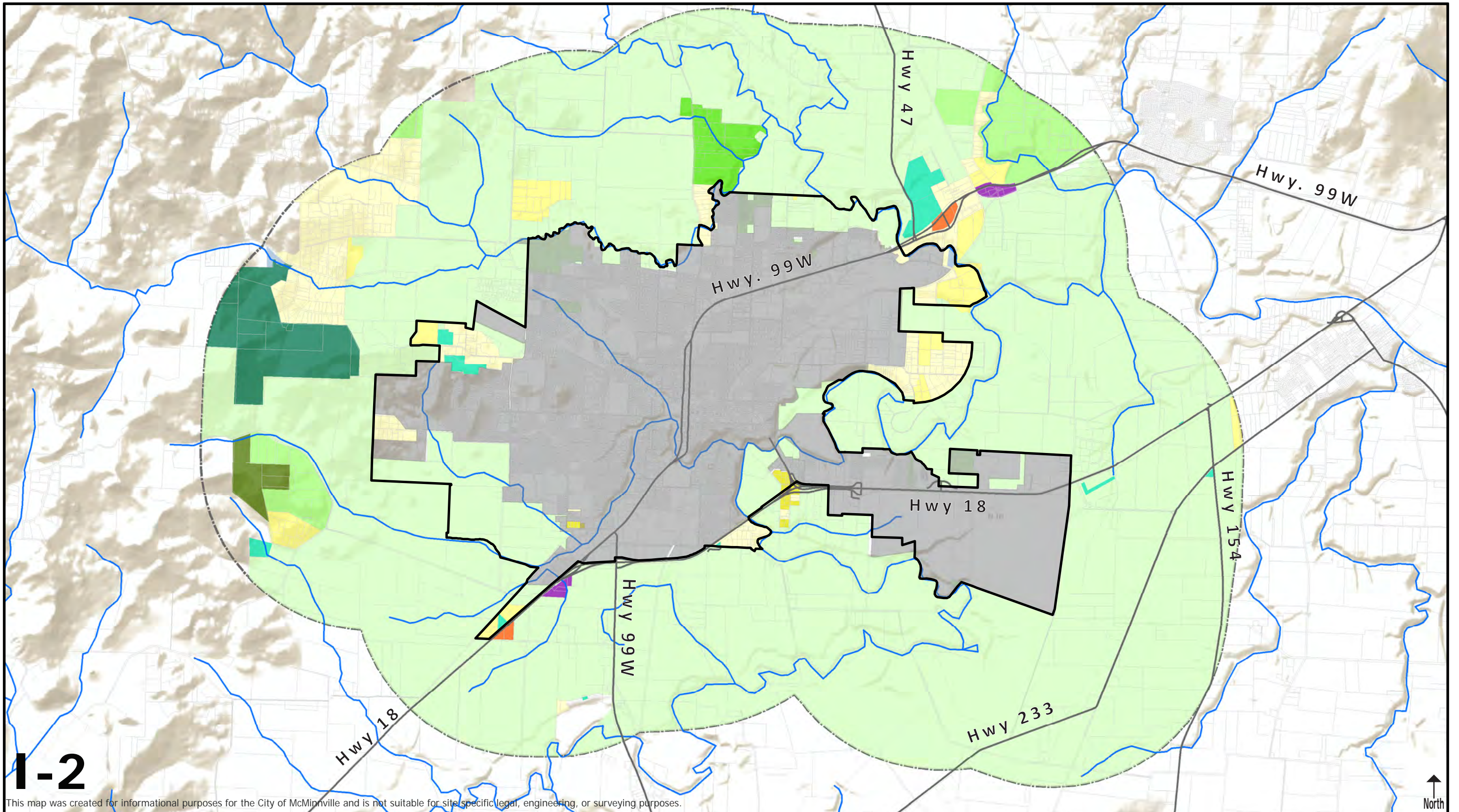
This map was created for informational purposes for the City of McMinnville and is not suitable for site specific legal, engineering, or surveying purposes.

McMinnville Slopes



Created by Winterbrook Planning in coordination with the City of McMinnville





1-2

This map was created for informational purposes for the City of McMinnville and is not suitable for site specific legal, engineering, or surveying purposes.

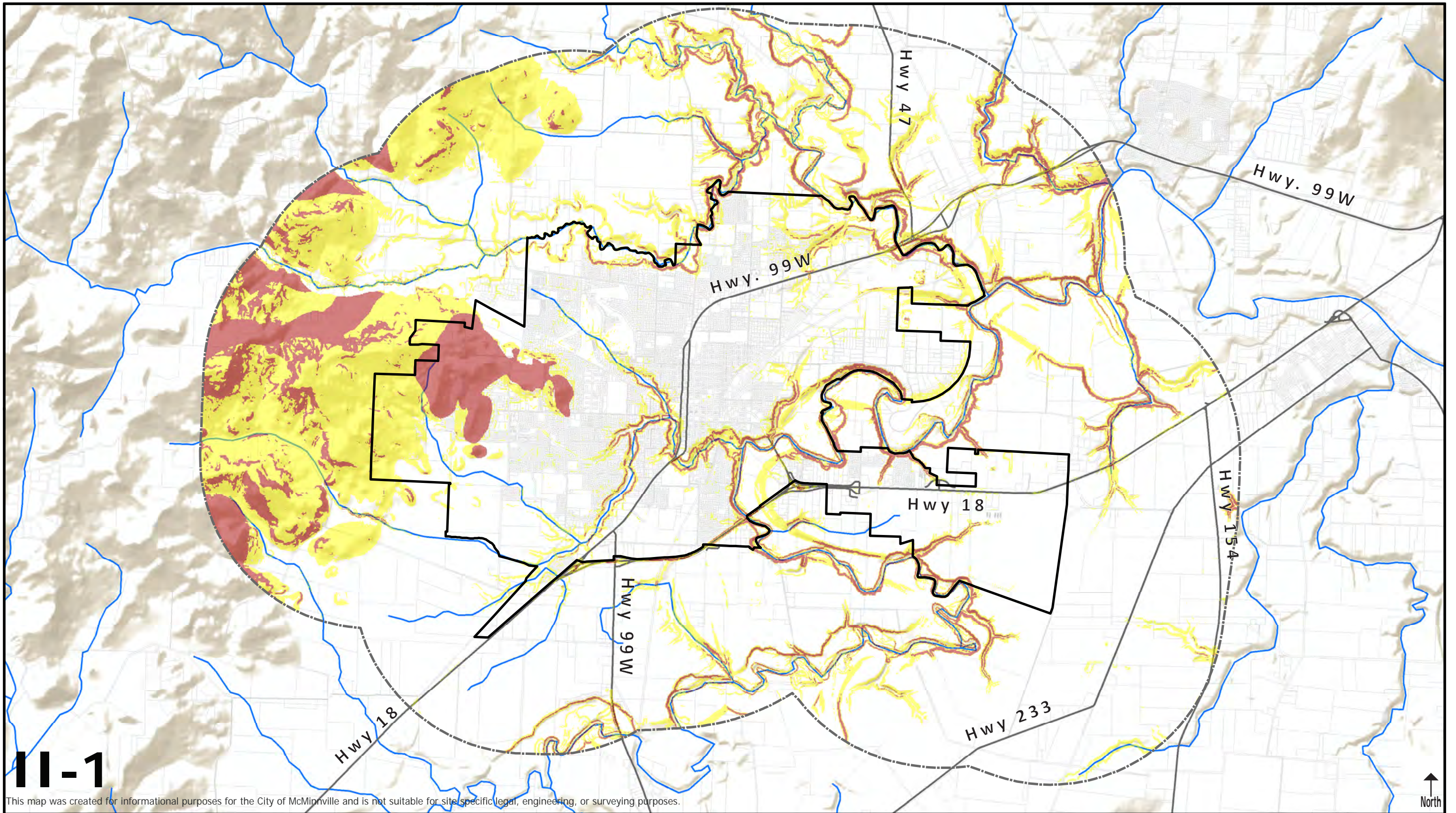
McMinnville Rural Area Zoning

Yamhill County Zoning	Mixed Farm-Forest 40	Prime Forest 80	Rural Residential 1 acre	McMinnville 2021 Urban Growth Boundary
Exclusive Farm Use 20+	Open Space/Conservation	Rural Commercial	Rural Residential 10 acres	Study Area (1.5 Miles)
Exclusive Farm Use 40+	Other	Rural Industrial	Rural Residential 2-4 acres	City Limits
Exclusive Farm Use 80				

Tax Lots
 Major Roads
 Rivers & Streams

Miles 0 0.25 0.5 1 1.5 2
 Created by Winterbrook Planning in coordination with the City of McMinnville
 Last Revised: June 21, 2021





11-1

This map was created for informational purposes for the City of McMinnville and is not suitable for site specific legal, engineering, or surveying purposes.

**McMinnville
Geologic Hazards:
Landslides**

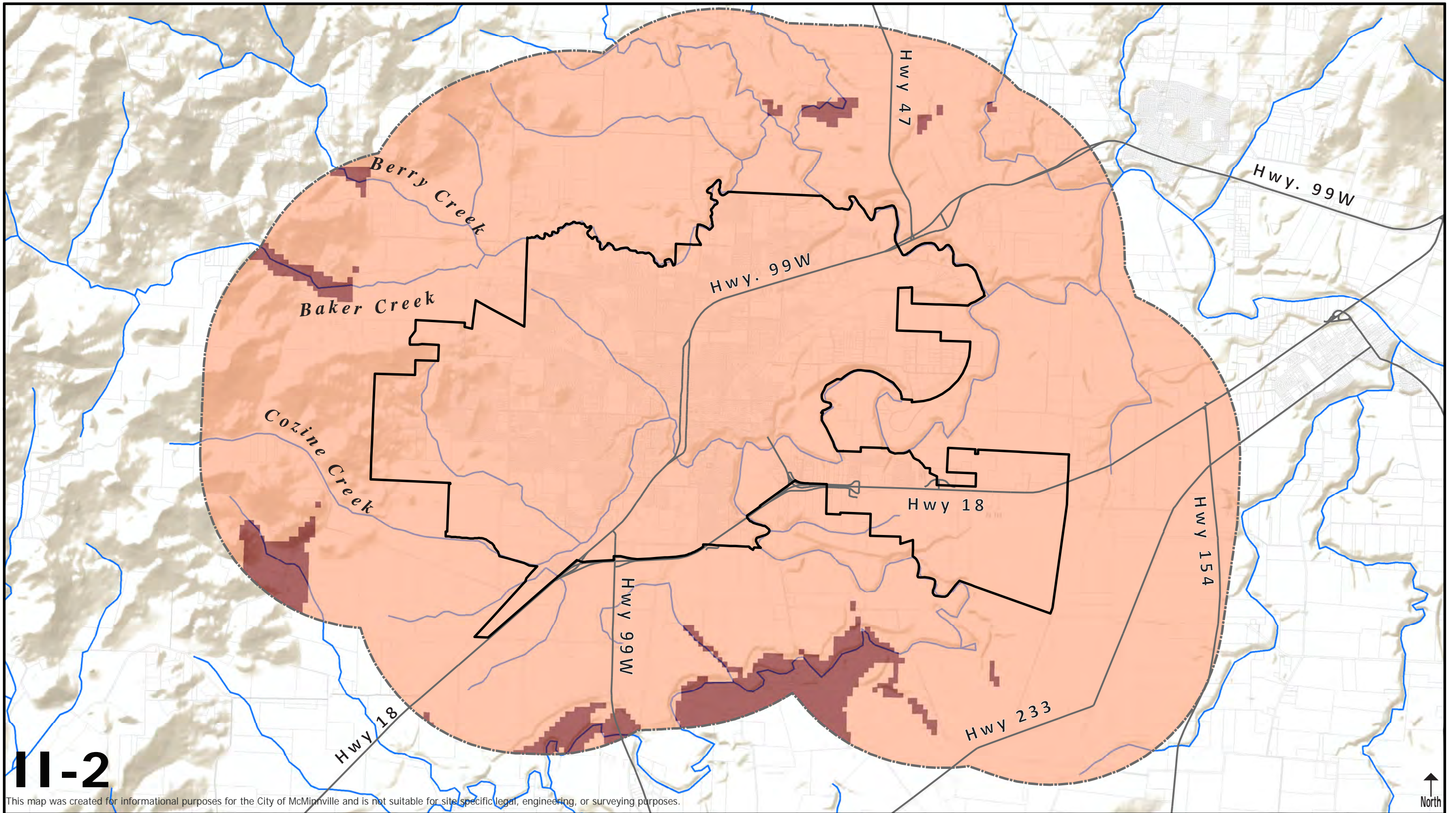
- | | | |
|-----------------------|--|------------------|
| Landslide Risk | McMinnville 2021 Urban Growth Boundary | Major Roads |
| Moderate Risk | Study Area (1.5 Miles) | Rivers & Streams |
| High Risk | Tax Lots | |

Miles 0 0.25 0.5 1 1.5 2

Created by Winterbrook Planning in coordination with the City of McMinnville

City of McMinnville
WINTERBROOK
Last Revised: June 21, 2021



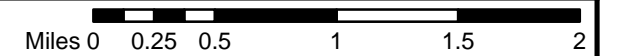


11-2

This map was created for informational purposes for the City of McMinnville and is not suitable for site specific legal, engineering, or surveying purposes.

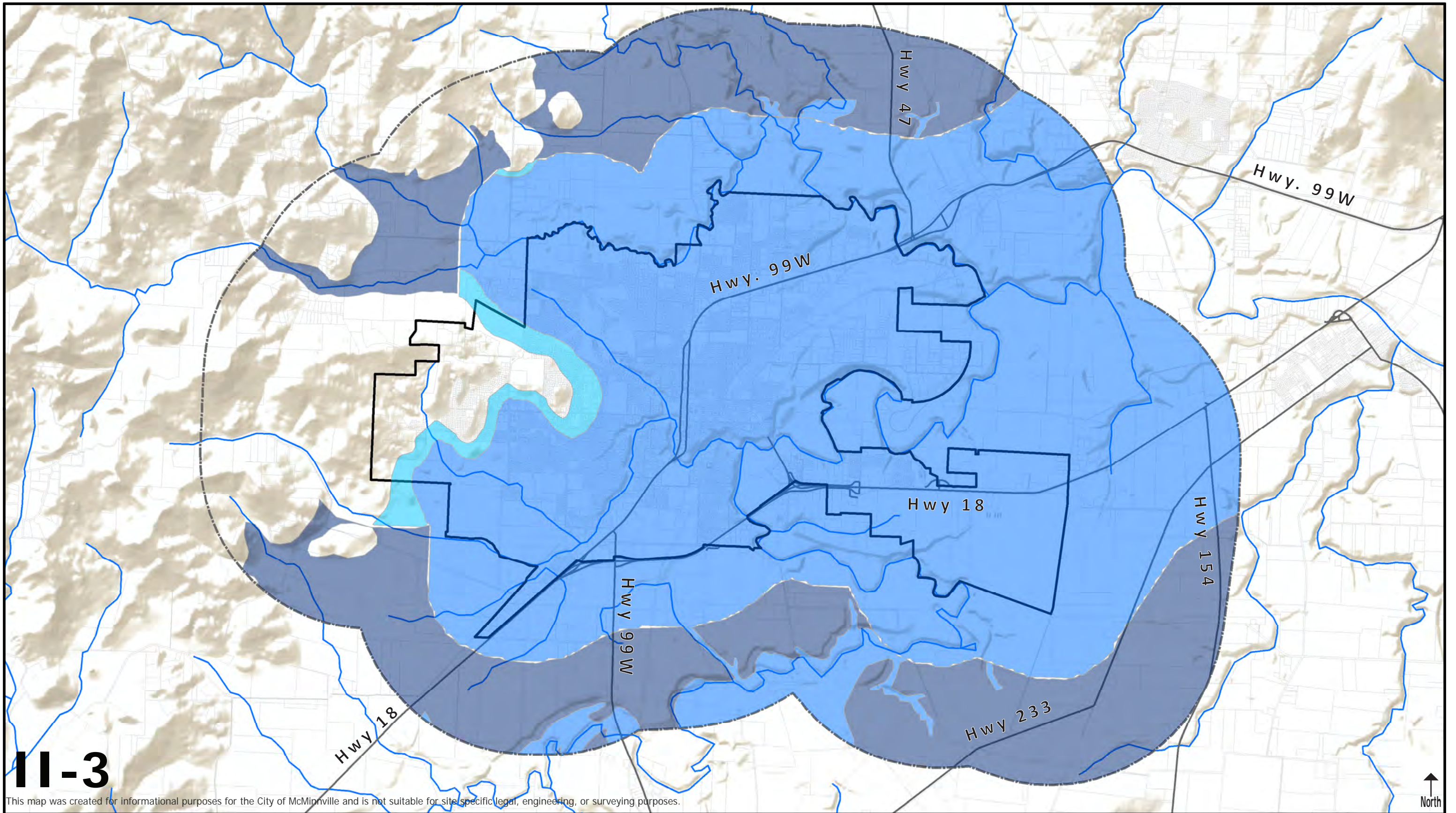
**McMinnville
Geologic Hazards:
Cascadia Subduction
Earthquake Shaking**

- | | | |
|-------------------------|--|------------------|
| Expected Shaking | McMinnville 2021 Urban Growth Boundary | Major Roads |
| Very Strong Shaking | Study Area (1.5 Miles) | Rivers & Streams |
| Severe Shaking | Tax Lots | |



Created by Winterbrook Planning in coordination with the City of McMinnville





11-3

This map was created for informational purposes for the City of McMinnville and is not suitable for site specific legal, engineering, or surveying purposes.

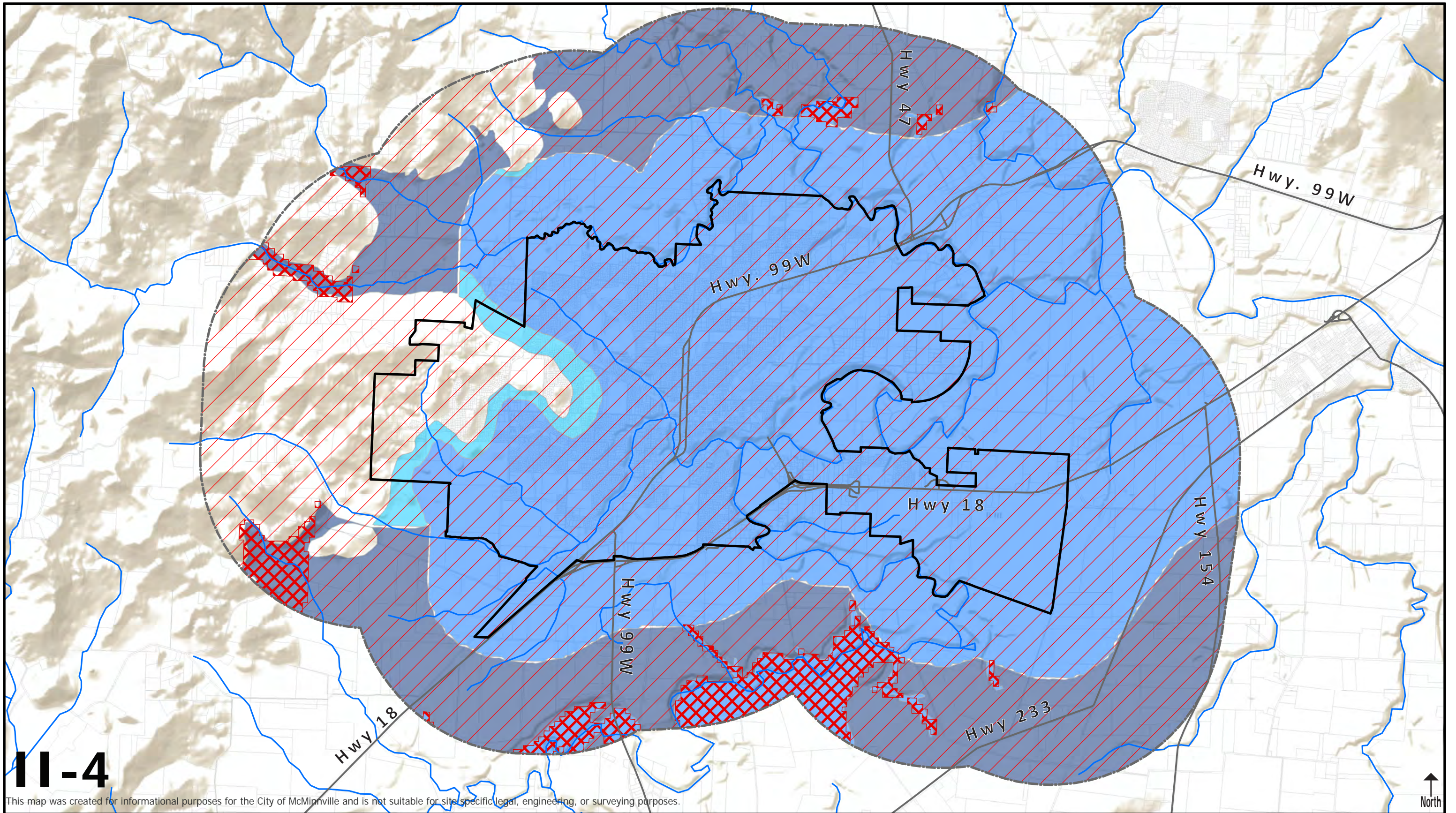
**McMinnville
Geologic Hazards:
Earthquake Liquefaction
Susceptibility**

- | | | | |
|--------------------------|---------------|--|------------------|
| Liquefaction Risk | Moderate Risk | McMinnville 2021 Urban Growth Boundary | Major Roads |
| Low Risk | High Risk | Study Area (1.5 Miles) | Rivers & Streams |
| | | Tax Lots | |

Miles 0 0.25 0.5 1 1.5 2

Created by Winterbrook Planning in coordination with the City of McMinnville

City of McMinnville
WINTERBROOK
Last Revised: June 22, 2021



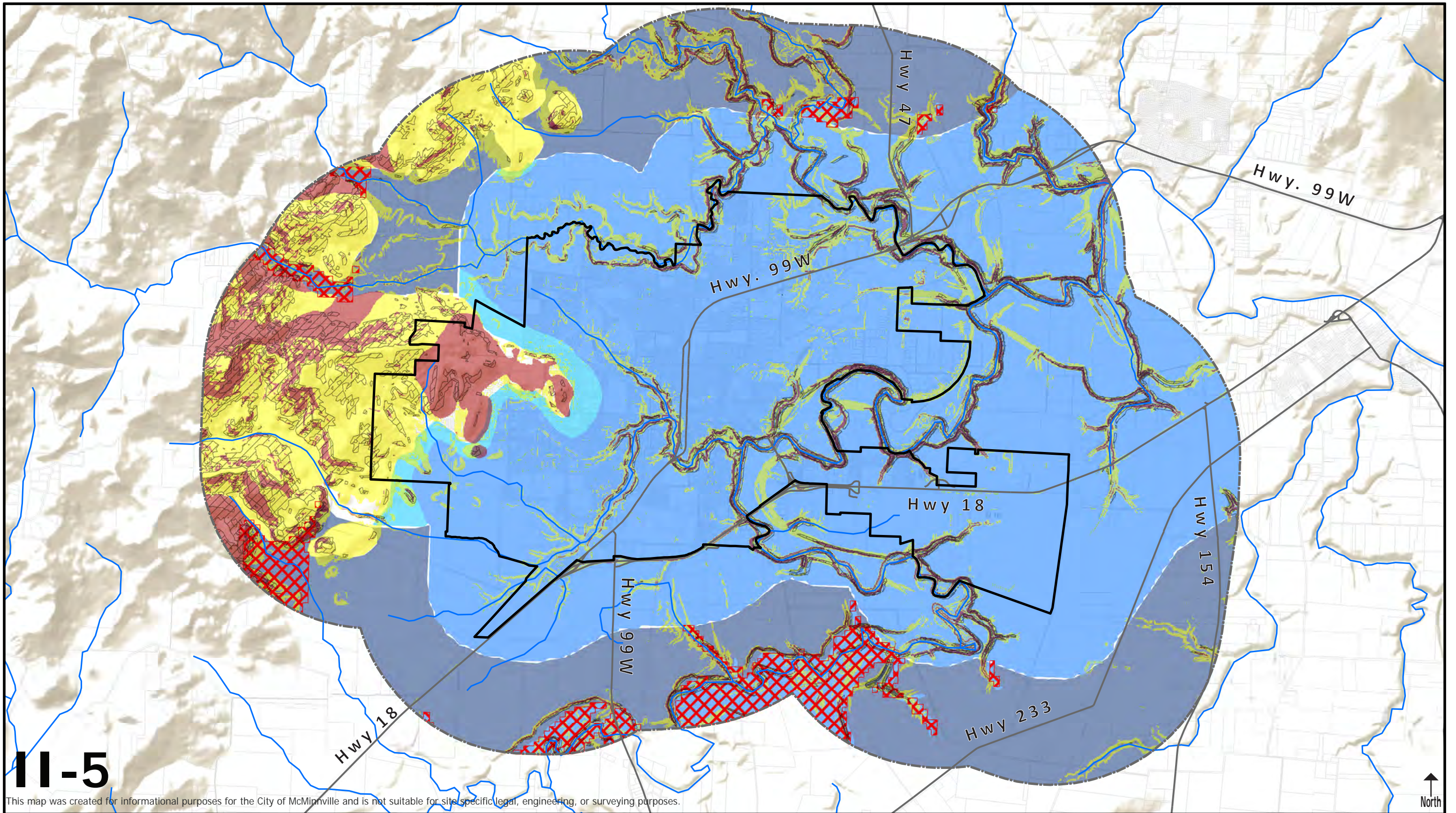
11-4

This map was created for informational purposes for the City of McMinnville and is not suitable for site specific legal, engineering, or surveying purposes.

**McMinnville
Geologic Hazards:
Subduction Shaking &
Liquefaction Risks**

Liquefaction Risk	Low Risk	Moderate Risk	High Risk	Very Strong Shaking	Severe Shaking	McMinnville 2021 Urban Growth Boundary	Study Area (1.5 Miles)	Tax Lots	Major Roads	Rivers & Streams	Miles 0 0.25 0.5 1 1.5 2
--------------------------	----------	---------------	-----------	---------------------	----------------	--	------------------------	----------	-------------	------------------	--------------------------

Created by Winterbrook Planning in coordination with the City of McMinnville
 Last Revised: June 22, 2021



11-5

This map was created for informational purposes for the City of McMinnville and is not suitable for site specific legal, engineering, or surveying purposes.

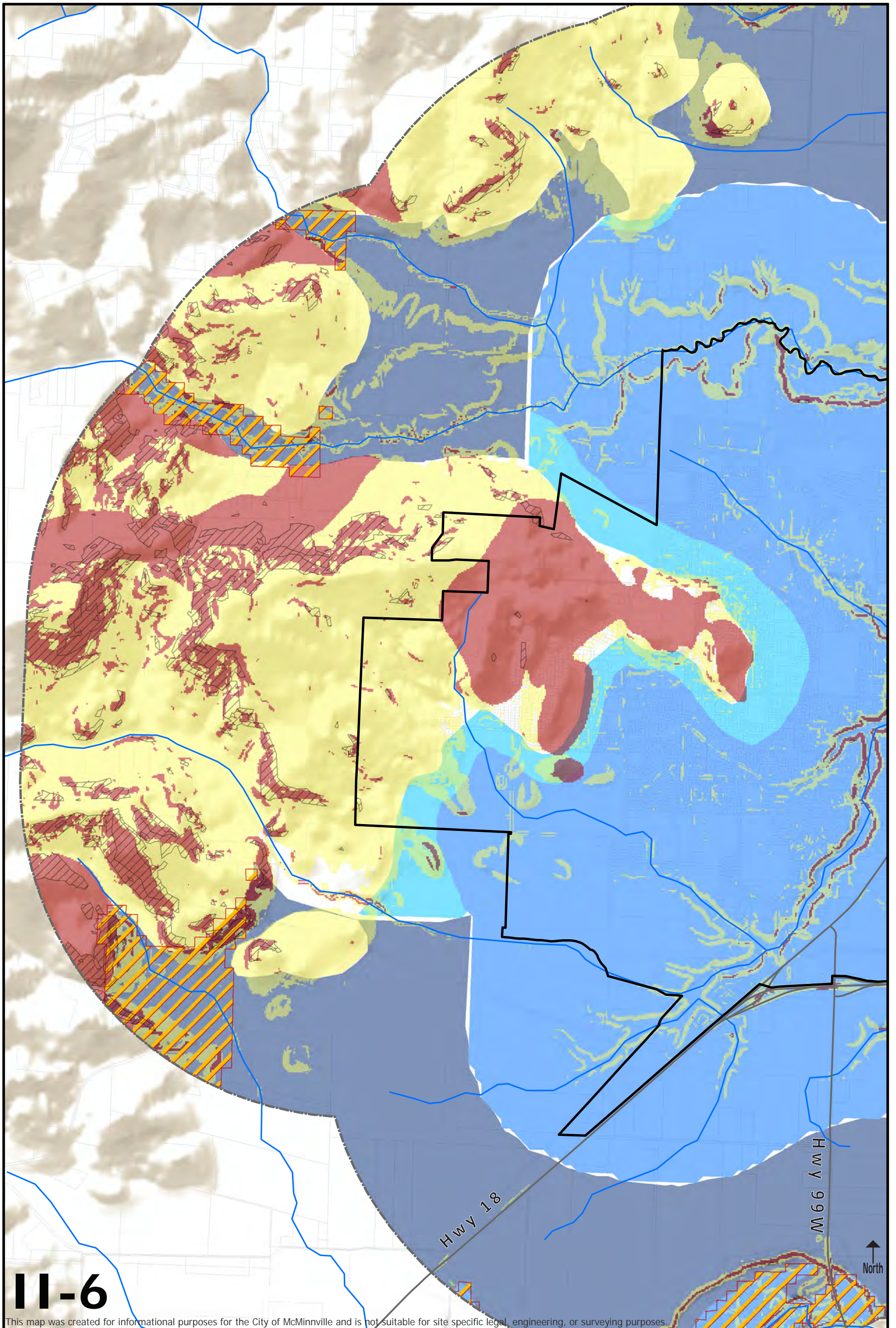
**McMinnville
Geologic Hazards: Landslide,
Liquefaction, Subduction Shaking
& Steep Slopes**

- | | | | |
|-----------------------|--------------------------|--|------------------|
| Landslide Risk | Liquefaction Risk | Severe Shaking | Tax Lots |
| Moderate Risk | Low Risk | Steep Slopes (>15%) | Major Roads |
| High Risk | Moderate Risk | McMinnville 2021 Urban Growth Boundary | Rivers & Streams |
| | High Risk | Study Area (1.5 Miles) | |



Created by Winterbrook Planning in coordination with the City of McMinnville





11-6

This map was created for informational purposes for the City of McMinnville and is not suitable for site specific legal, engineering, or surveying purposes.

McMinnville WEST HILLS
Geologic Hazards:
Landslide, Liquefaction,
Subduction Shaking &
Steep Slopes

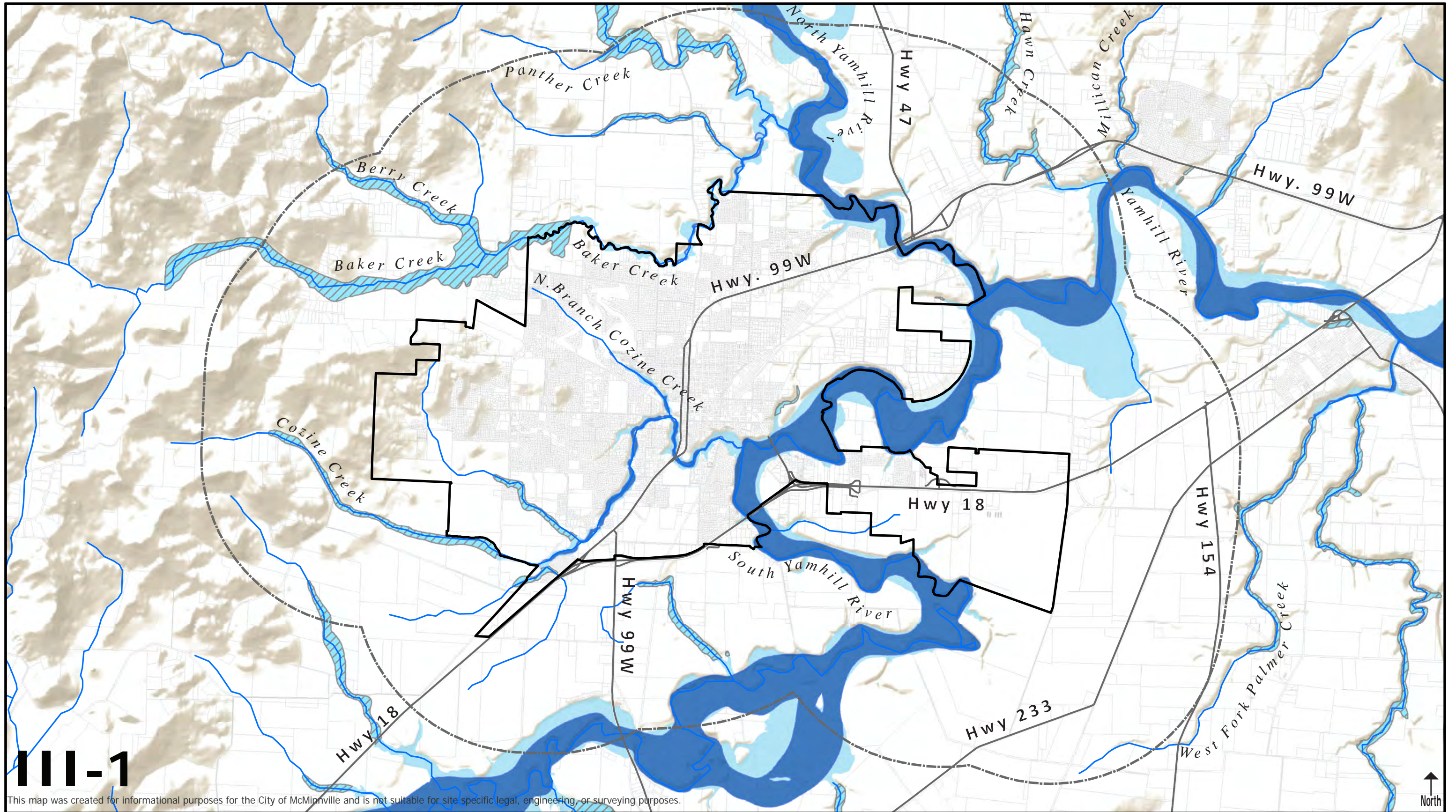
- | | | | |
|-----------------------|--------------------------|--|------------------|
| Landslide Risk | Liquefaction Risk | Severe Shaking | Tax Lots |
| Moderate Risk | Low Risk | Steep Slopes (>25%) | Major Roads |
| High Risk | Moderate Risk | McMinnville 2021 Urban Growth Boundary | Rivers & Streams |
| | High Risk | Study Area (1.5 Miles) | |

Miles 0.125 0.25 0.5 0.75 1

Created by Winterbrook Planning in coordination with the City of McMinnville



Last Revised: June 23, 2021



III-1

This map was created for informational purposes for the City of McMinnville and is not suitable for site specific legal, engineering, or surveying purposes.

**McMinnville
Flood Hazards**

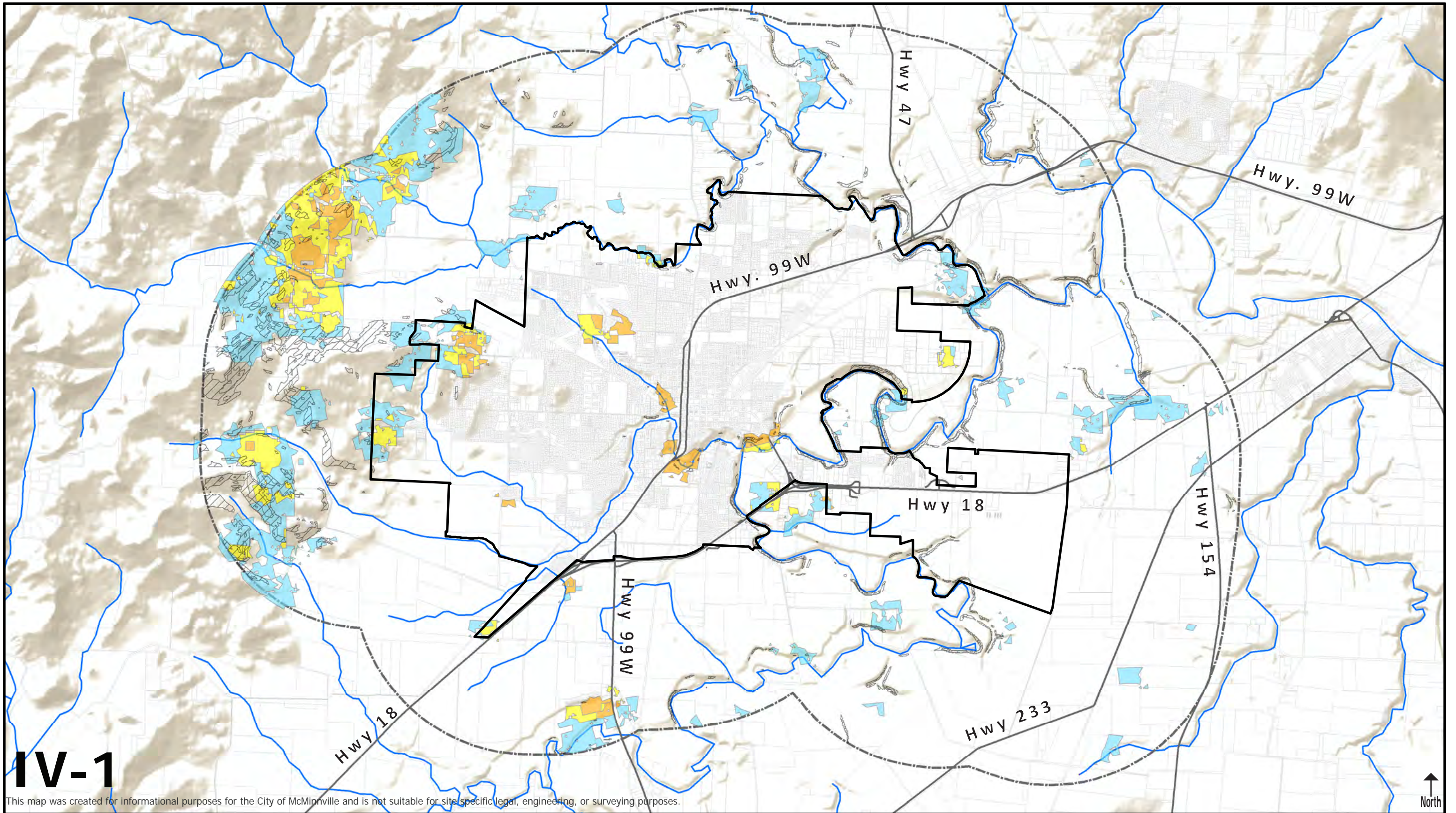
- Floodway
- McMinnville 2021 Urban Growth Boundary
- Major Roads
- Flood Zone A
- Study Area (1.5 Miles)
- Rivers & Streams
- Flood Zone AE
- Tax Lots

Miles 0 0.25 0.5 1 1.5 2

Created by Winterbrook Planning in coordination with the City of McMinnville

City of McMinnville

 Last Revised: June 23, 2021



IV-1

This map was created for informational purposes for the City of McMinnville and is not suitable for site specific legal, engineering, or surveying purposes.

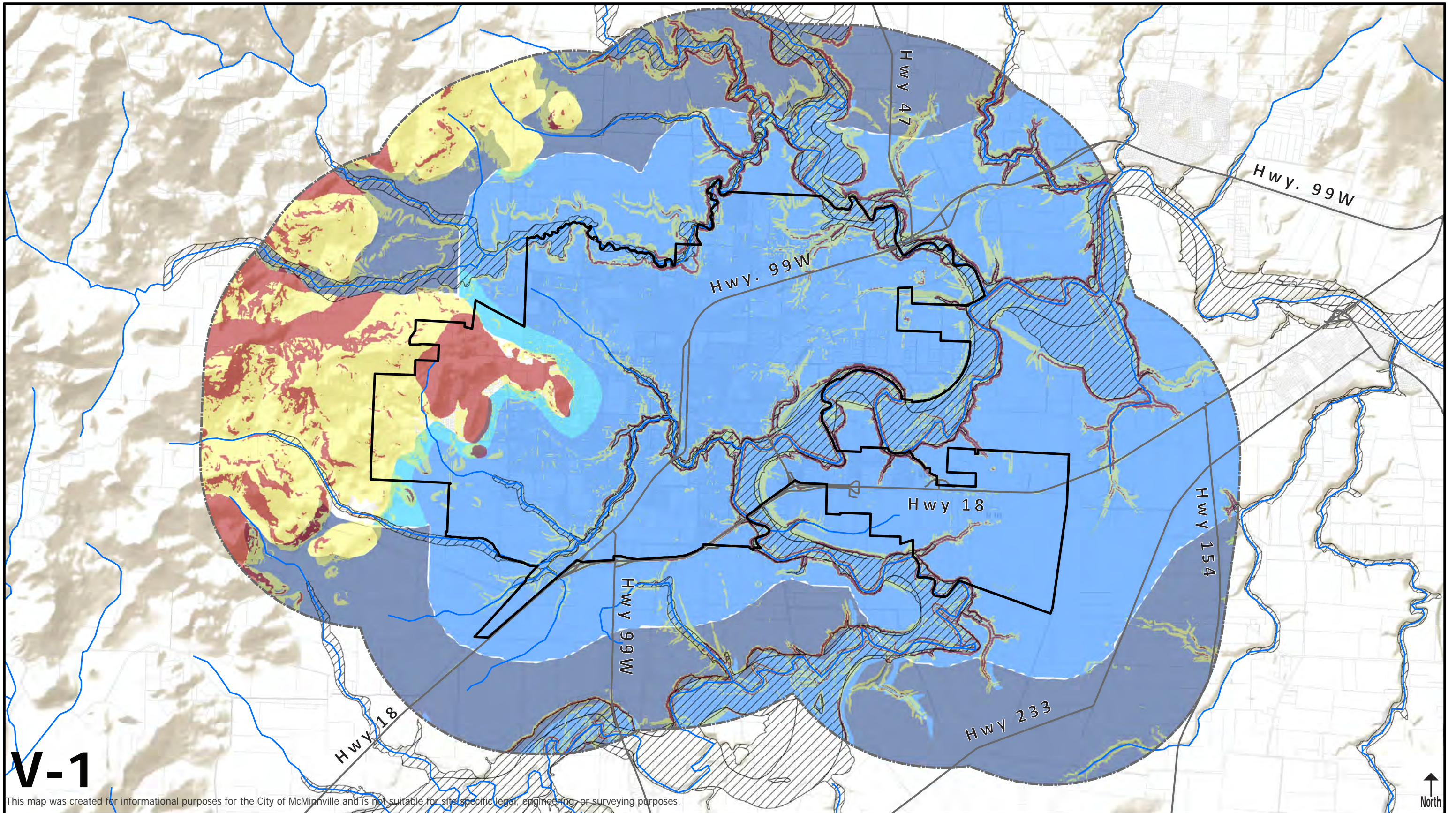
McMinnville Potential Wildfire Impact to People and Property

- | | | |
|----------------------|--|------------------|
| Wildfire Risk | Steep Slopes (>25%) | Major Roads |
| Low | McMinnville 2021 Urban Growth Boundary | Rivers & Streams |
| Moderate | Study Area (1.5 Miles) | |
| High/Severe | Tax Lots | |



Created by Winterbrook Planning in coordination with the City of McMinnville





V-1

This map was created for informational purposes for the City of McMinnville and is not suitable for site specific legal, engineering, or surveying purposes.

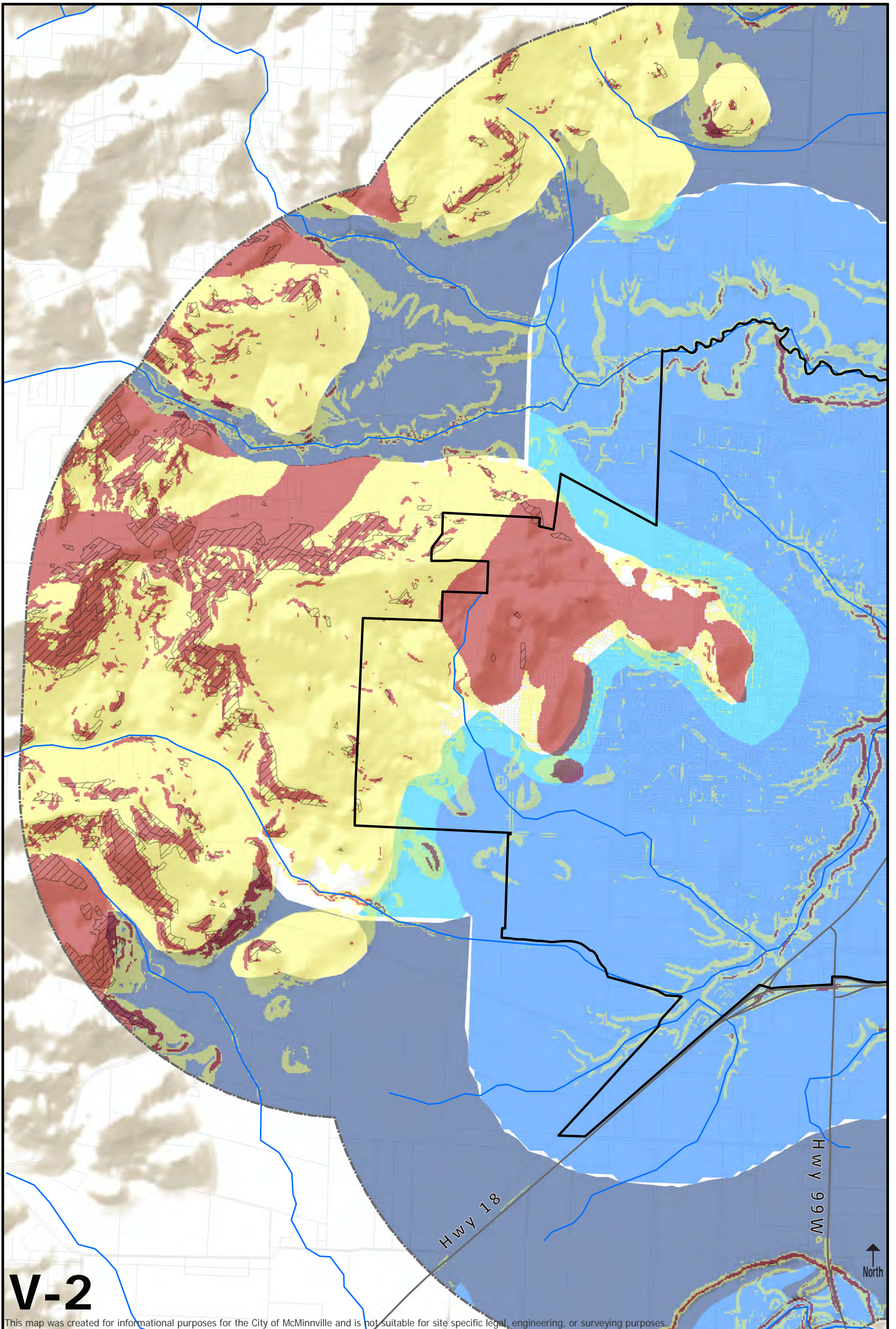
**McMinnville
Landslide, Liquefaction,
& Flood Hazards**

- | | | | |
|-----------------------|--------------------------|--|------------------|
| Landslide Risk | Liquefaction Risk | Flood Hazards | Major Roads |
| Moderate Risk | Low Risk | McMinnville 2021 Urban Growth Boundary | Rivers & Streams |
| High Risk | Moderate Risk | Study Area (1.5 Miles) | |
| | High Risk | Tax Lots | |

Miles 0 0.25 0.5 1 1.5 2

Created by Winterbrook Planning in coordination with the City of McMinnville

City of McMinnville
WINTERBROOK
Last Revised: June 23, 2021



V-2

This map was created for informational purposes for the City of McMinnville and is not suitable for site specific legal, engineering, or surveying purposes.

McMinnville WEST HILLS
Geologic Hazards:
Steep Slopes, Landslide
& Liquefaction

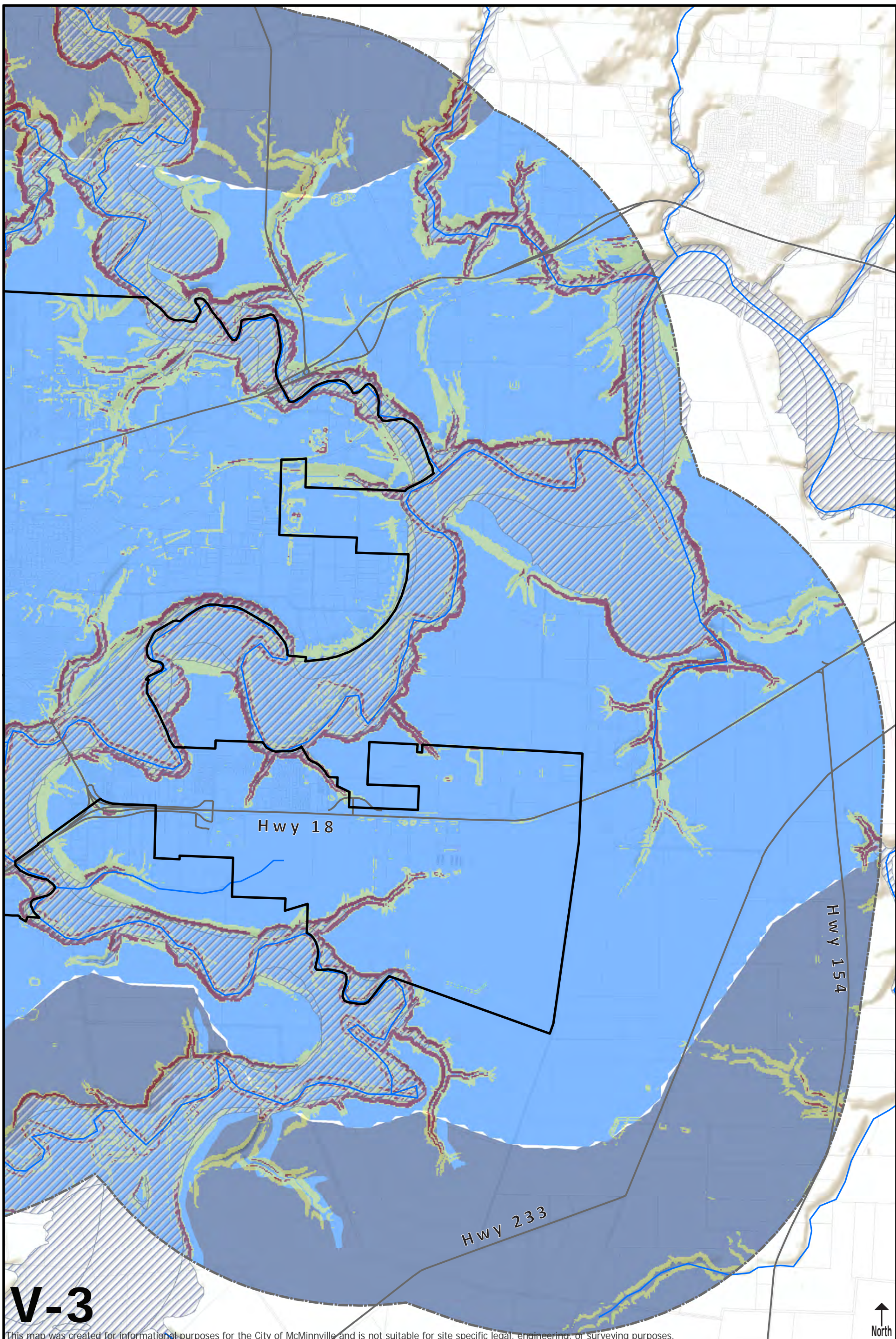
- | | | | |
|-----------------------|--------------------------|--|------------------|
| Landslide Risk | Liquefaction Risk | Steep Slopes (>25%) | Tax Lots |
| Moderate Risk | Low Risk | McMinnville 2021 Urban Growth Boundary | Major Roads |
| High Risk | High Risk | Study Area (1.5 Miles) | Rivers & Streams |

Miles 0.125 0.25 0.5 0.75 1

Created by Winterbrook Planning in coordination with the City of McMinnville



Last Revised: June 23, 2021



V-3

This map was created for informational purposes for the City of McMinnville and is not suitable for site specific legal, engineering, or surveying purposes.



McMinnville
EAST VALLEY
Landslide, Liquefaction,
& Flood Hazards

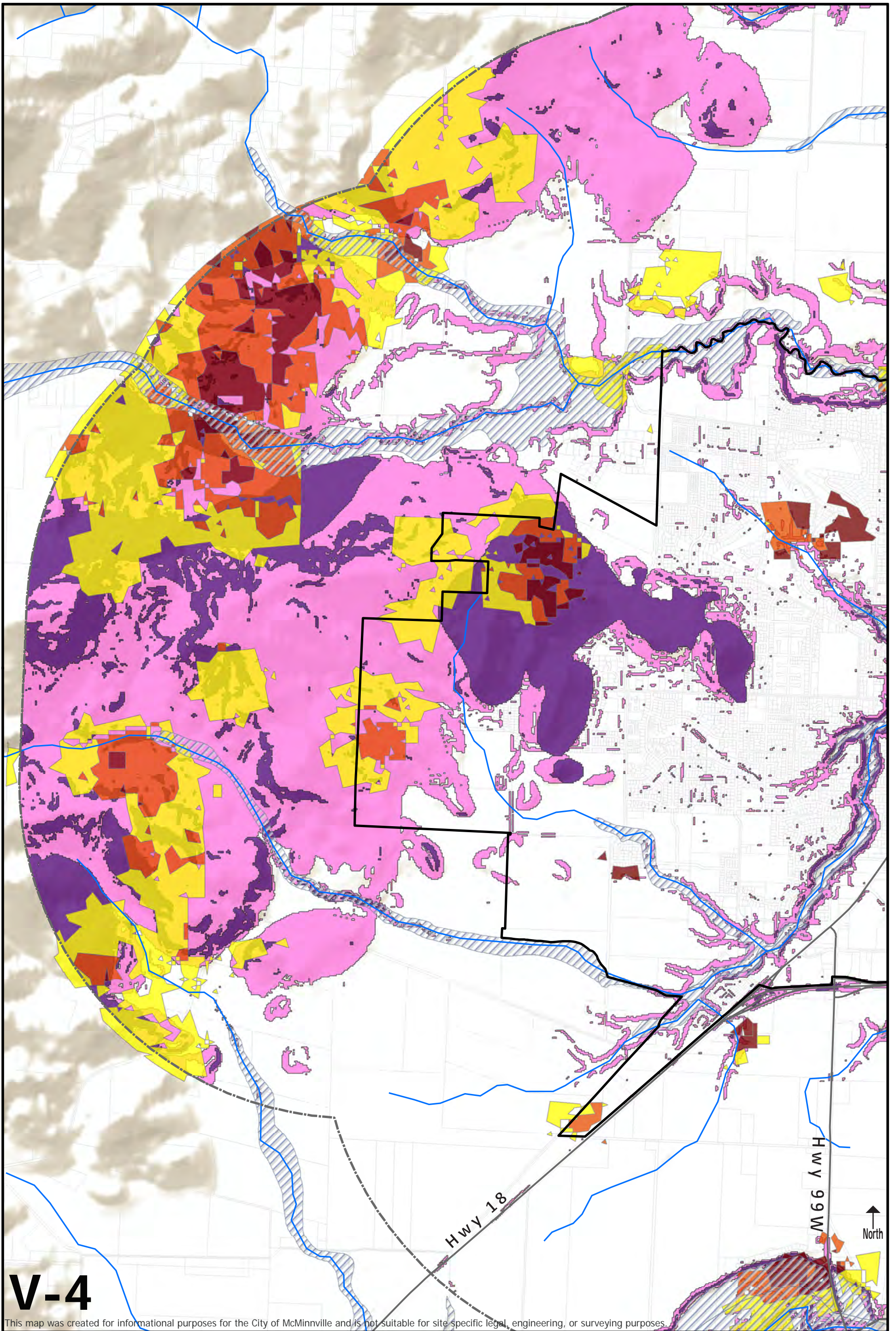
- | | | | |
|-----------------------|--------------------------|--|------------------|
| Landslide Risk | Liquefaction Risk | Flood Hazard | Tax Lots |
| Moderate Risk | Low Risk | McMinnville 2021 Urban Growth Boundary | Major Roads |
| High Risk | Moderate Risk | Study Area (1.5 Miles) | Rivers & Streams |
| | High Risk | | |

Miles 0.125 0.25 0.5 0.75 1

Created by Winterbrook Planning in coordination with the City of McMinnville



Last Revised: June 23, 2021



V-4

This map was created for informational purposes for the City of McMinnville and is not suitable for site specific legal, engineering, or surveying purposes.

McMinnville WEST HILLS
Wildfire Impacts to People & Property, Landslide Risk, & Flood Hazards

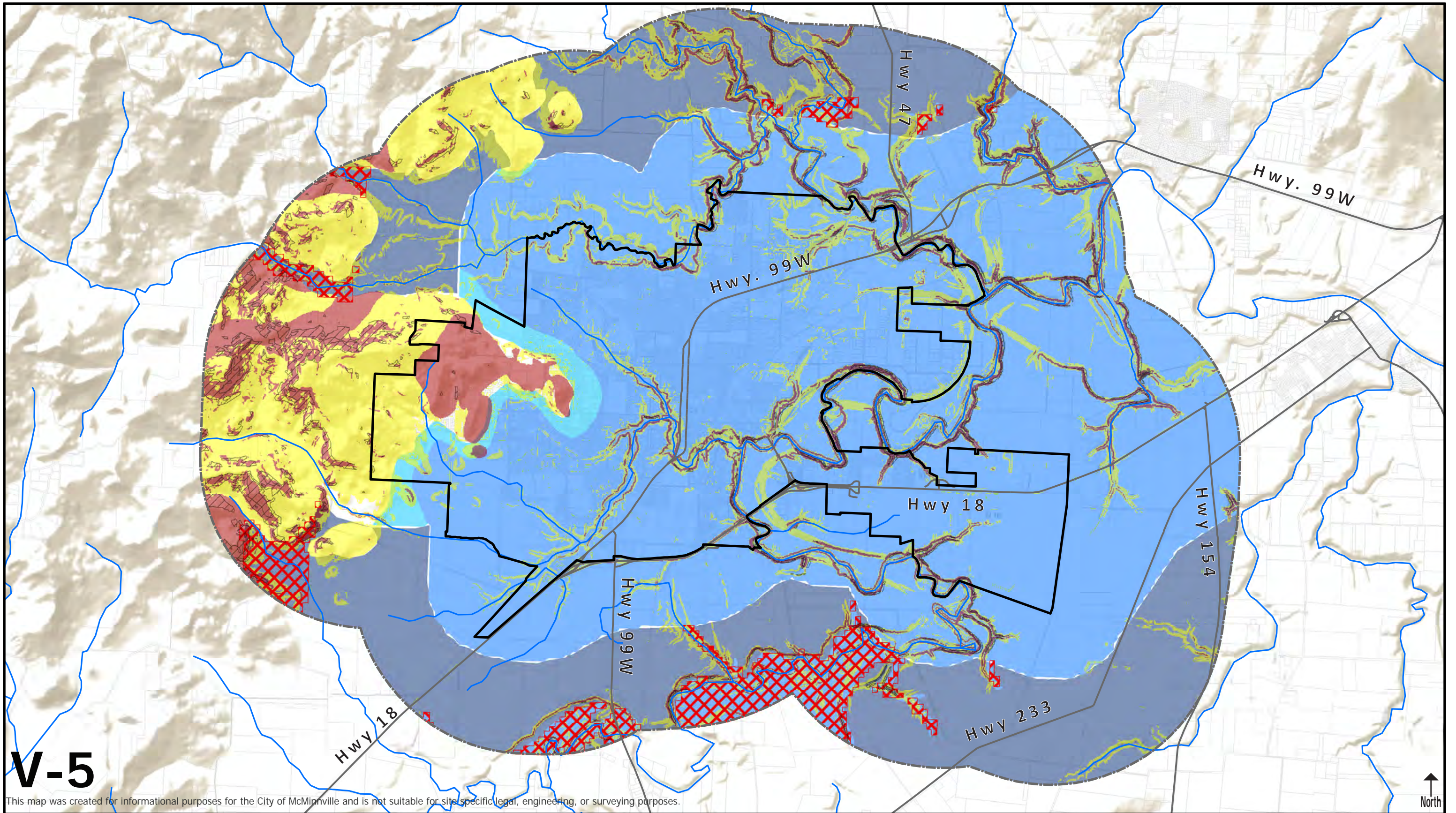
- | | | | |
|----------------------|-----------------------|--|------------------|
| Wildfire Risk | Landslide Risk | Flood Hazard | Tax Lots |
| Low | Moderate Risk | McMinnville 2021 Urban Growth Boundary | Major Roads |
| Moderate | High Risk | Study Area (1.5 Miles) | Rivers & Streams |
| High | | | |

Miles 0.125 0.25 0.5 0.75 1

Created by Winterbrook Planning in coordination with the City of McMinnville

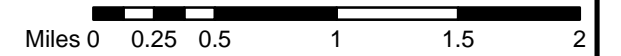


Last Revised: June 23, 2021



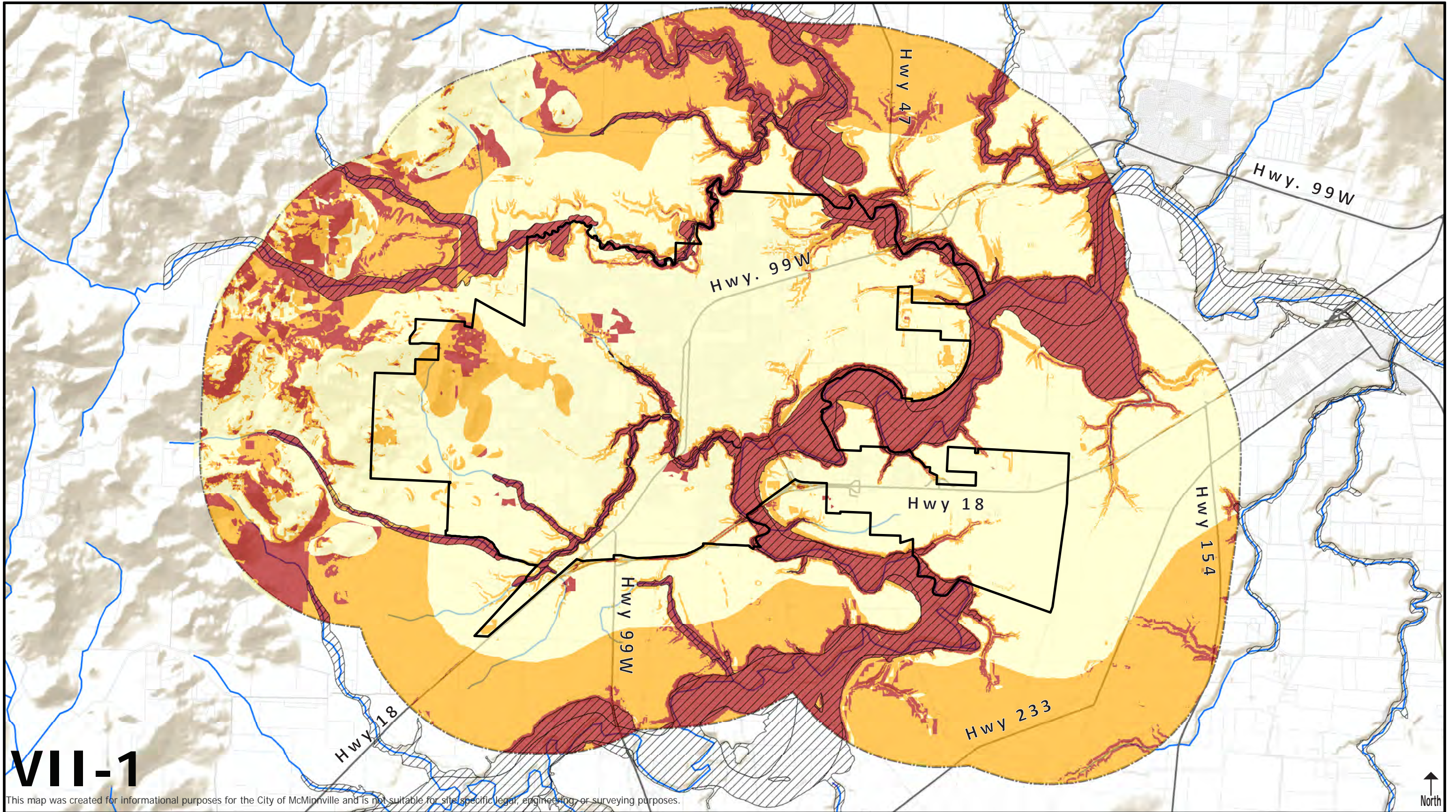
**McMinnville Composite Map:
Landslide, Liquefaction, Subduction
Shaking & Steep Slopes**

- | | | | |
|-----------------------|--------------------------|--|------------------|
| Landslide Risk | Liquefaction Risk | Severe Shaking | Tax Lots |
| Moderate Risk | Low Risk | Steep Slopes (>25%) | Major Roads |
| High Risk | Moderate Risk | McMinnville 2021 Urban Growth Boundary | Rivers & Streams |
| | High Risk | Study Area (1.5 Miles) | |



Created by Winterbrook Planning in coordination with the City of McMinnville





VII-1

This map was created for informational purposes for the City of McMinnville and is not suitable for site specific legal, engineering, or surveying purposes.

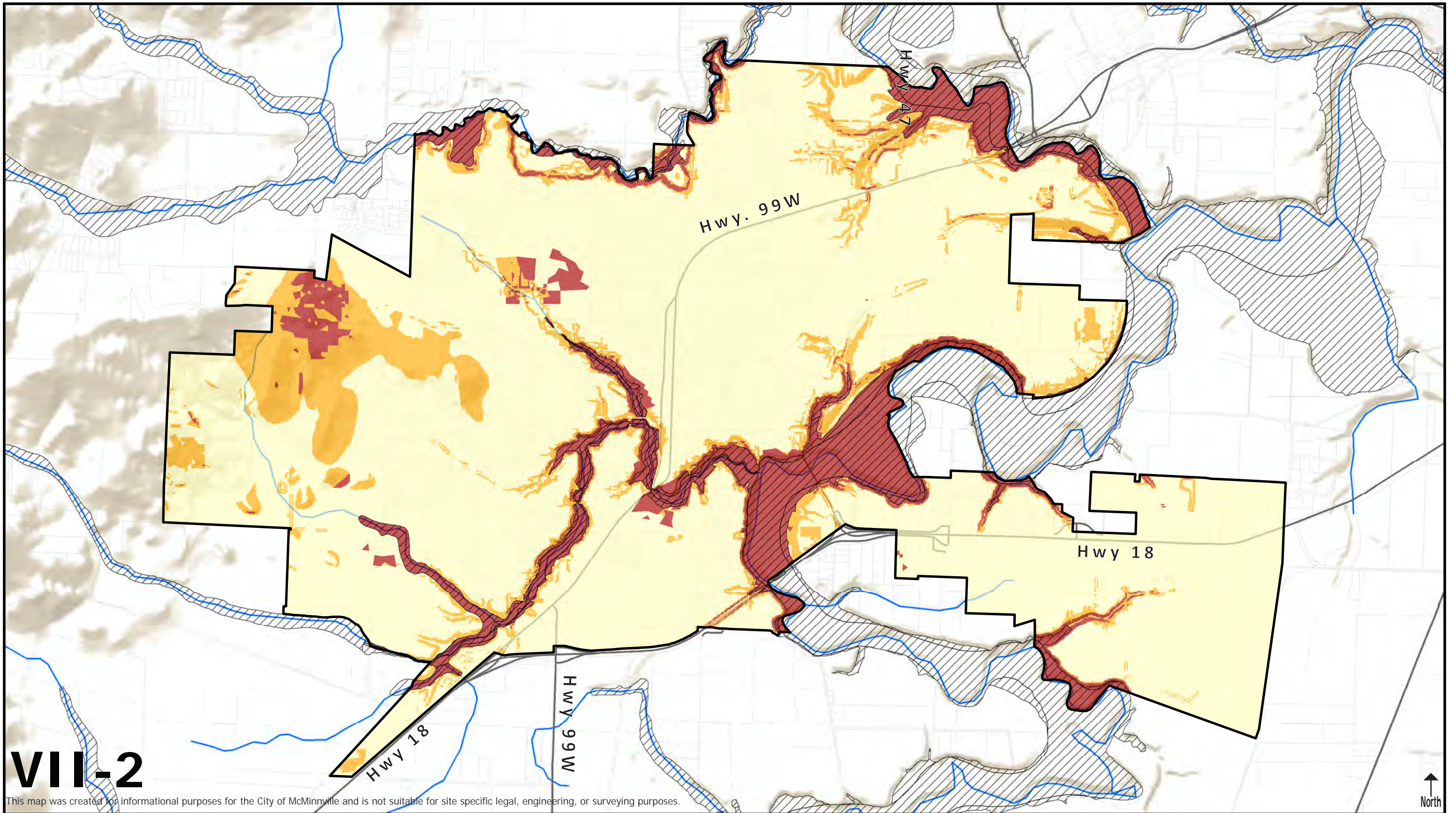
McMinnville Proposed Natural Hazard Overlay

- | | | |
|--------------------|--|------------------|
| Subdistrict | McMinnville 2021 Urban Growth Boundary | Major Roads |
| Protection (NH-P) | Study Area (1.5 Miles) | Rivers & Streams |
| Mitigation (NH-M) | Flood Hazards | Tax Lots |
| No Subdistrict | | |

Miles 0 0.25 0.5 1 1.5 2

Created by Winterbrook Planning in coordination with the City of McMinnville

City of McMinnville
WINTERBROOK
Last Revised: June 24, 2021



VII-2

This map was created for informational purposes for the City of McMinnville and is not suitable for site specific legal, engineering, or surveying purposes.

McMinnville Proposed Natural Hazard Overlay - UGB

- | | | |
|--------------------|--|------------------|
| Subdistrict | McMinnville 2021 Urban Growth Boundary | Rivers & Streams |
| Protection (NH-P) | Major Roads | Tax Lots |
| Mitigation (NH-M) | Flood Hazards | |
| No Subdistrict | | |

Miles 0 0.15 0.3 0.6 0.9 1.2

Created by Winterbrook Planning in coordination with the City of McMinnville




Last Revised: June 24, 2021