
McMinnville Transportation Bond Program

Alpine Avenue and 5th Street

NOVEMBER 10, 2015

CITY COUNCIL PRESENTATION





McMinnville Transportation Bond Program

HOME ABOUT PROJECTS SCHEDULE CONTACT US

Voters Pass \$24 Million General Obligation Bond

In November, 2014, McMinnville voters passed a \$24 million General Obligation Bond measure for street improvements throughout the City. The City of McMinnville appreciates the public for supporting the bond measure and for recognizing and acting on this need. We look forward to completing the planned work over the next several years.

READ MORE



Welcome to the McMinnville Transportation Improvement Bond Project

In November, 2014, McMinnville voters passed a \$24 million General Obligation Bond measure for street improvements throughout the City. The proposed improvements include a mix of several needed street corridor capital projects; pavement overlay and preservation work on the City's "worst condition" streets; and sidewalk and safety improvements. The projects address existing safety and congestion concerns of importance to the City's citizens and businesses along several busy street corridors.

LATEST NEWS

Thanks to the citizens, we will begin construction on voter approved transportation projects. Six street repair projects are slated for approximately 4 miles throughout the community. Work includes pavement repairs, widening and accessible curb ramps.

Alpine Avenue Improvement Project



The Alpine Avenue Improvement Project is one of the five Capital Improvement Projects identified within the Transportation Bond. This project will improve a portion of NE Alpine Avenue in the City's Northeast Gateway District including street surfacing, pedestrian facilities, utility upgrades and landscaping to encourage economic development. The intent for the Alpine Avenue Project is outlined in the Northeast Gateway Plan and identifies Alpine Avenue as being the central spine and primary pedestrian route through the District. An improved Alpine Avenue will provide a low traffic, pedestrian-friendly connection between downtown and destinations throughout the Northeast Gateway District.



COME JOIN US!

Alpine Avenue Improvement Project - Community Forum
Tuesday, September 29th from 5:00 to 7:00 pm
at Civic Hall

EVENTS

Advisory Committee Meeting #1

July 16, 2015, from 11:00 am to 1:00 pm
McMinnville Community Development Center
600 NE Evans St McMinnville OR 97128

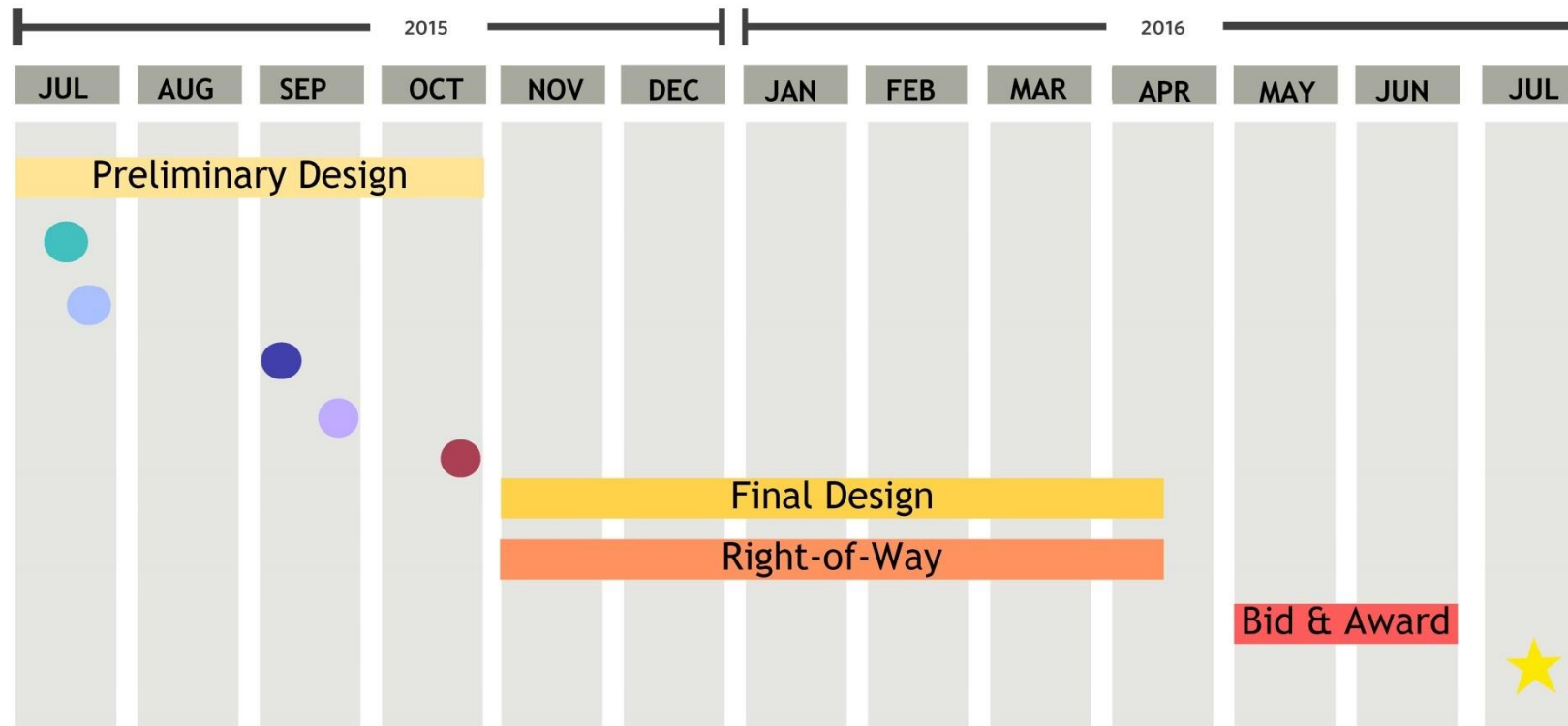
Alpine Avenue Design Charrette

July 23, 2015 from 8:00 am to 5:00 pm
Civic Hall
200 NE 2nd St McMinnville OR 97128







mcminnvilletransportationbond.org



City of McMinnville Alpine Avenue Improvement Project Timeline



Milestones:

-  **Advisory Committee Kickoff Meeting**
-  **Advisory Committee Meeting #2**
(Review Preferred Alternative)
-  **Council Meeting**
(Approval of Preferred Design)
-  **Design Charette**
(Identify Preferred Design Options)
-  **Community Forum**
-  **Construction Start**





CITY COUNCIL UPDATE



DRAFT CONCEPT STREETScape PLAN

10 NOVEMBER 2015

ALPINE AVENUE MCMINNVILLE

NORTHEAST GATEWAY PLAN

The Northeast Gateway Plan is:

- an infill and redevelopment plan
- addresses current and future transportation needs
- guides future development to achieve an integrated, mixed-use, pedestrian-oriented neighborhood

The Plan seeks to:

- efficiently use land
- complement surrounding development
- create a close-in working neighborhood within walking distance of downtown.



FINAL DRAFT, MARCH 2012

DRAFT CONCEPT STREETScape PLAN

10 NOVEMBER 2015



ALPINE AVENUE IMPROVEMENTS



Alpine will be the central spine and primary pedestrian route through the District. It should be a unique street that complements the craft workshop atmosphere of the businesses along Alpine and within the Granary District. The design of Alpine should consider curb-less, shared space road treatments, as well as sustainable storm-water facilities.

Closest to the Granary District, Alpine should be a "festival street," which is a flexible space

for cars, bikes, and pedestrians that can easily be blocked off for festivals. It would be wired for electricity for setting up booths and entertainment. North of the festival street treatment, the design could give way to a "woonerf" (a Dutch term that means "living street"), which is similar in that it is a curb-less, shared road space, with low speed limits to improve pedestrian, bicycle, and automobile safety.



Alpine will be:

- The central spine
- primary pedestrian route through the District
- a unique street that complements the craft workshop atmosphere of the businesses along Alpine and within the Granary District.

The design of Alpine should consider:

- curbless, shared space road treatments
- sustainable storm-water facilities.

Closest to the Granary District, Alpine should be a "festival street".



DRAFT CONCEPT STREETScape PLAN

10 NOVEMBER 2015

ALPINE AVENUE MCMINNVILLE



DRAFT CONCEPT STREETScape PLAN

10 NOVEMBER 2015



DRAFT CONCEPT STREETSCAPE PLAN

10 NOVEMBER 2015



DRAFT CONCEPT STREETScape PLAN

10 NOVEMBER 2015



DRAFT CONCEPT STREETScape PLAN

10 NOVEMBER 2015



DRAFT CONCEPT STREETScape PLAN

10 NOVEMBER 2015



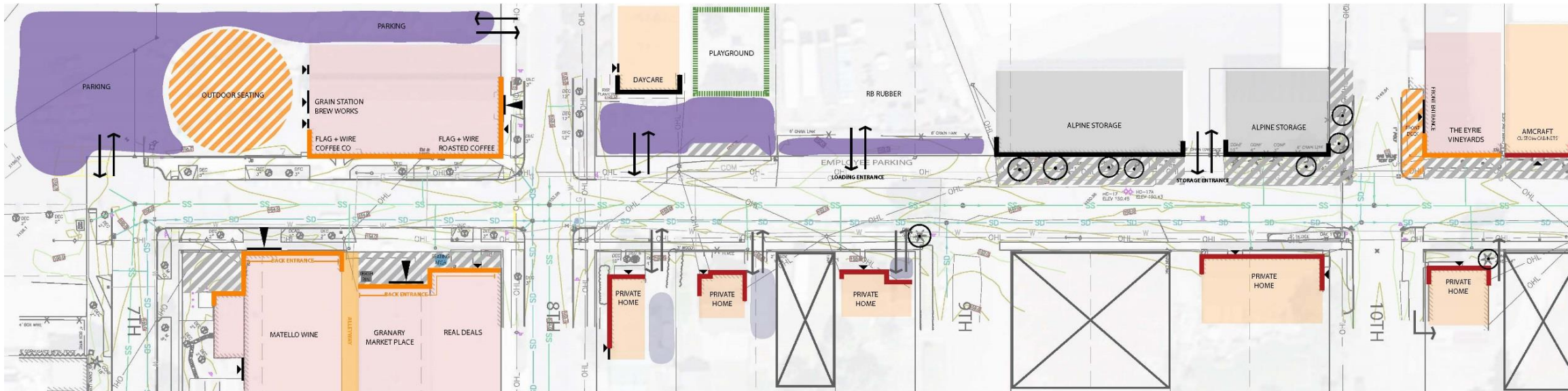
DRAFT CONCEPT STREETScape PLAN

10 NOVEMBER 2015



DRAFT CONCEPT STREETScape PLAN

10 NOVEMBER 2015



LEGEND

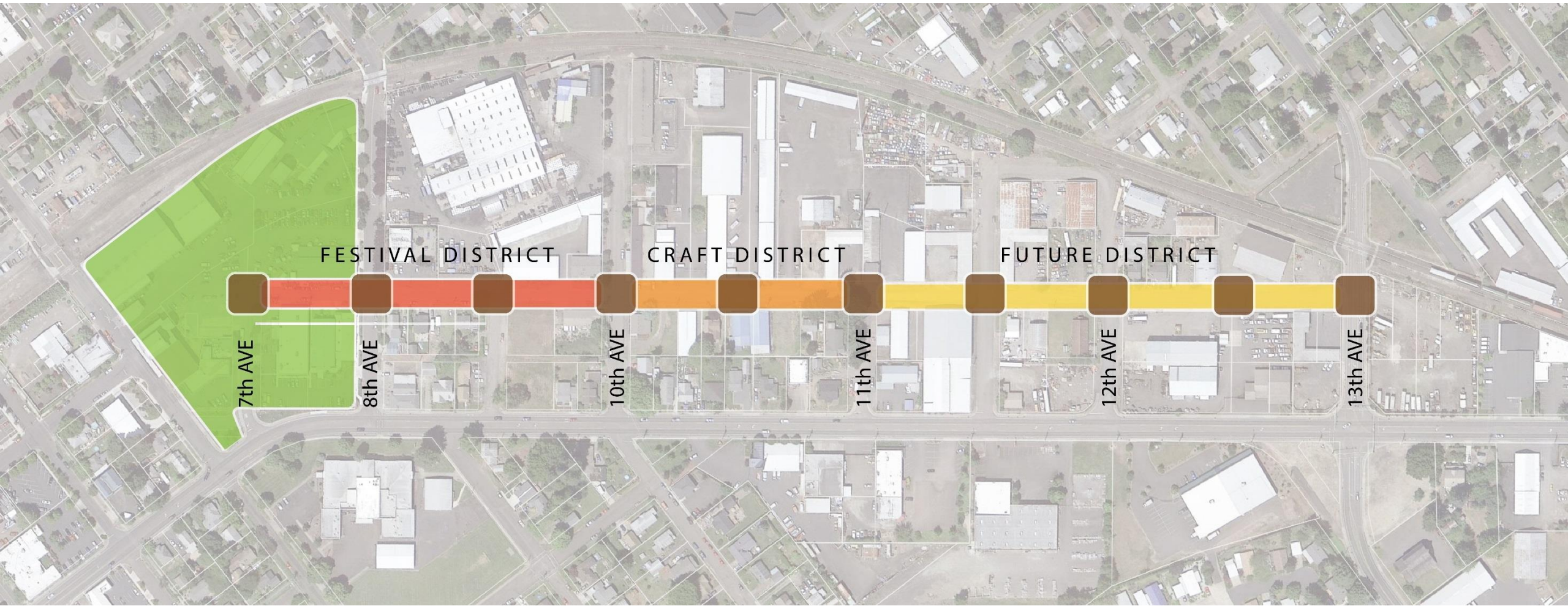
- ⊙ SIGNIFICANT TREE
- ▬ NON ACTIVE FRONTAGE
- ▬ POTENTIAL ACTIVE FRONTAGE
- ▬ ACTIVE FRONTAGE
- ▬ NON ACTIVE INTERFACE
- ▬ SEMI ACTIVE INTERFACE
- ▬ ACTIVE INTERFACE
- ▴ CAR ACCESS
- ▴ PEDESTRIAN ENTRANCE
- ↔ COMMERCIAL ZONE ACCESS & EGRESS
- ↔ RESIDENTIAL ACCESS & EGRESS
- ▬ ACTIVE PEDESTRIAN ZONE
- ▬ COMMERCIAL PARKING
- ▬ RESIDENTIAL PARKING



Design Principles

- Support new/existing economic vibrancy and investment
- Integrate and connect Alpine Ave to downtown
- Balance design for people and vehicles
- Engage existing development
- Design for appropriate long-term maintenance cost and effort
- Celebrate and honor history
- Provide a flexible design solution that has dynamic uses and accommodates future growth
- Provide infrastructure for public art
- Tend toward eclectic, unique, organic and memorable designs

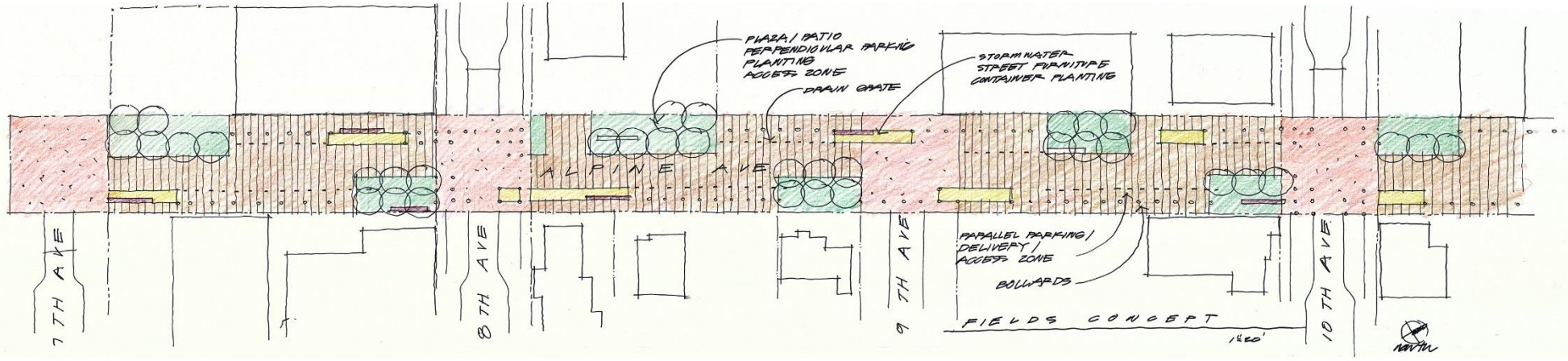
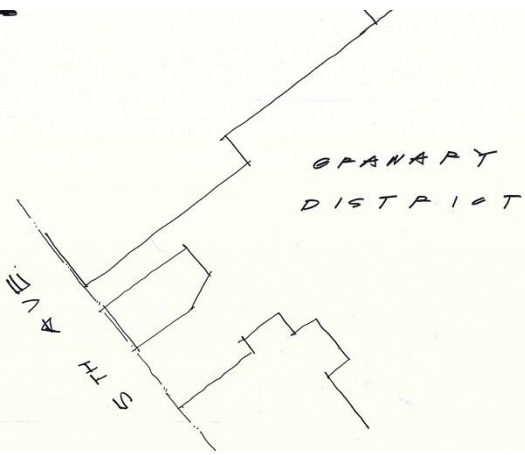
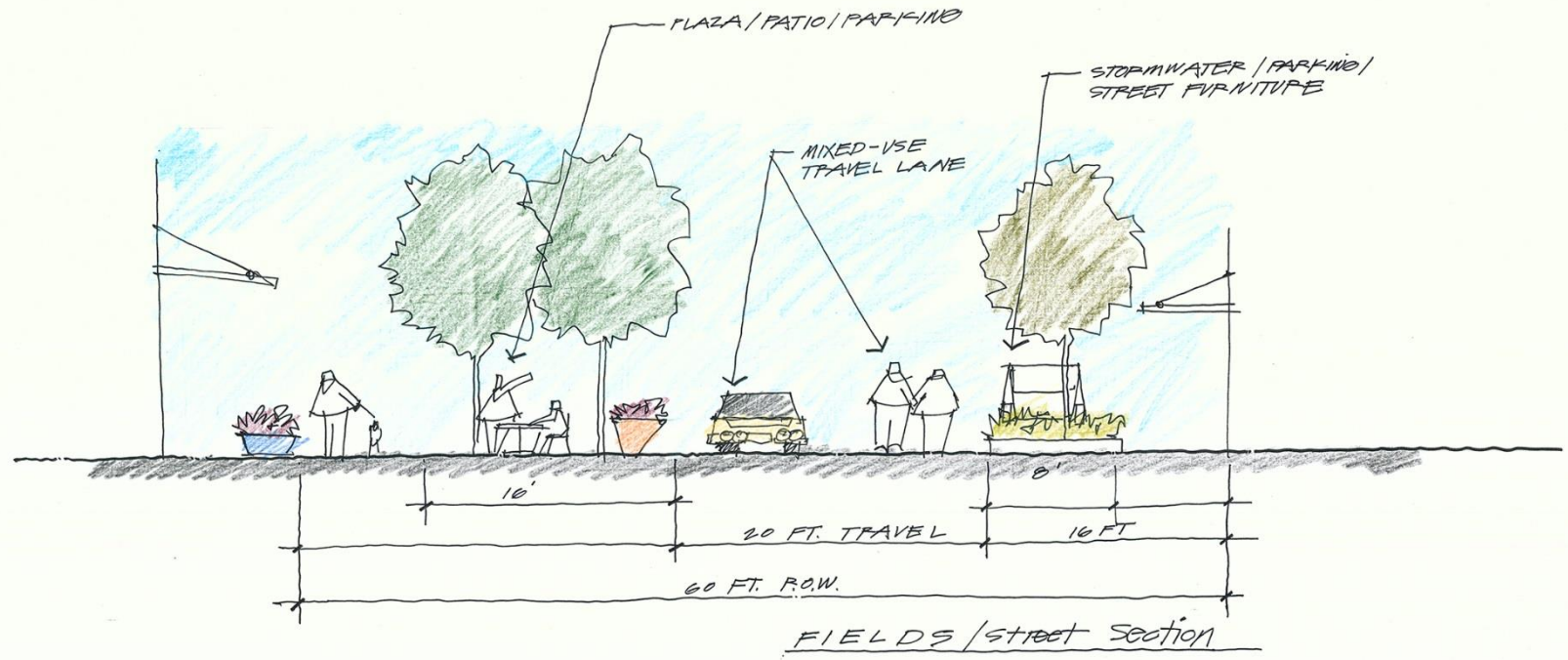


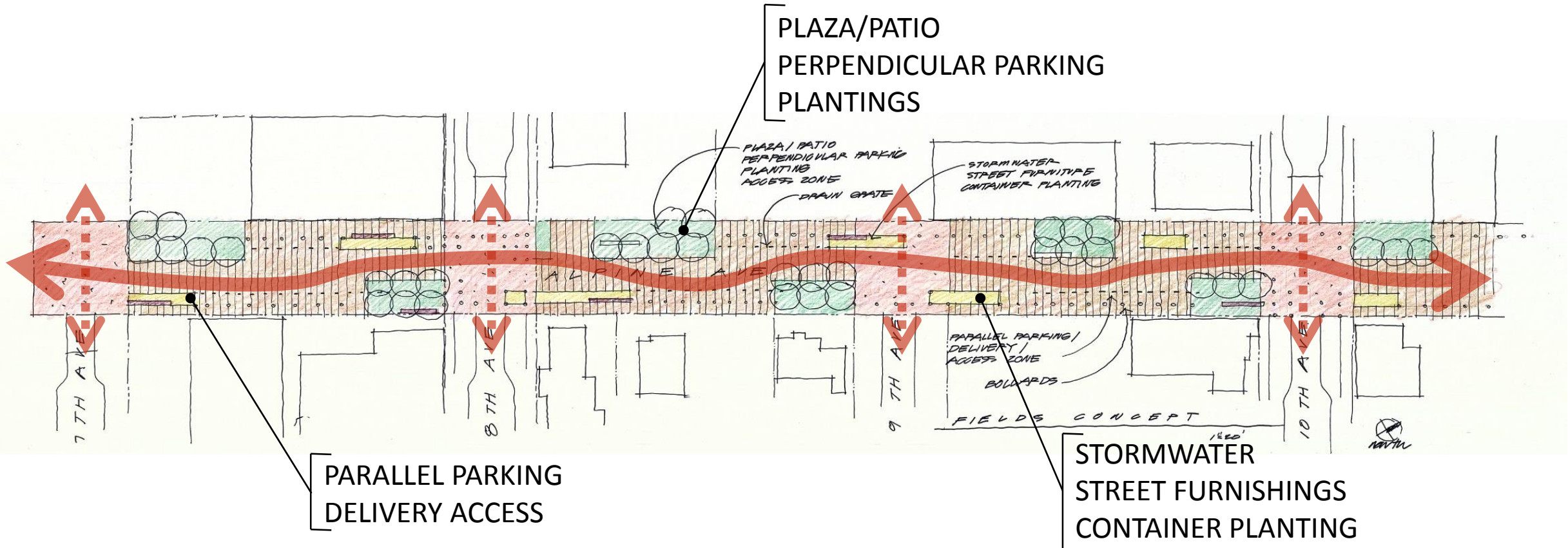


DRAFT CONCEPT STREETScape PLAN

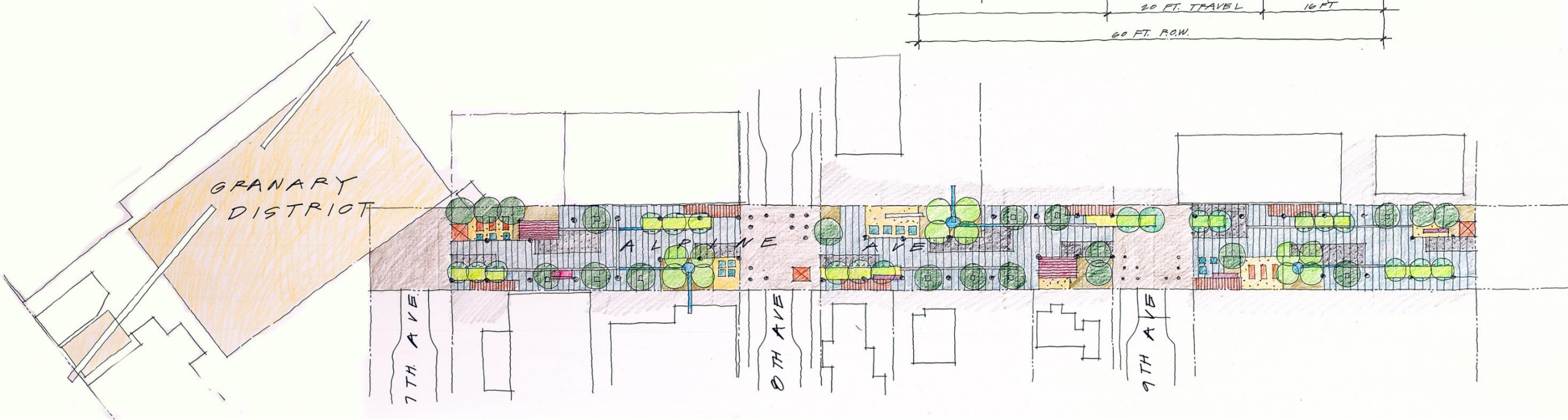
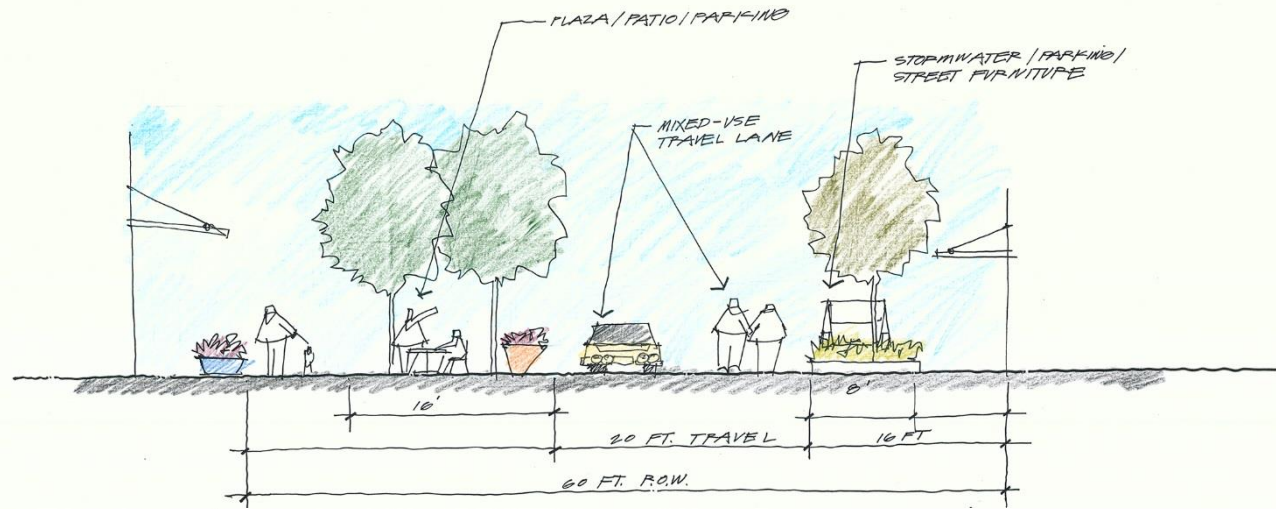
10 NOVEMBER 2015

FIELDS - CONCEPT



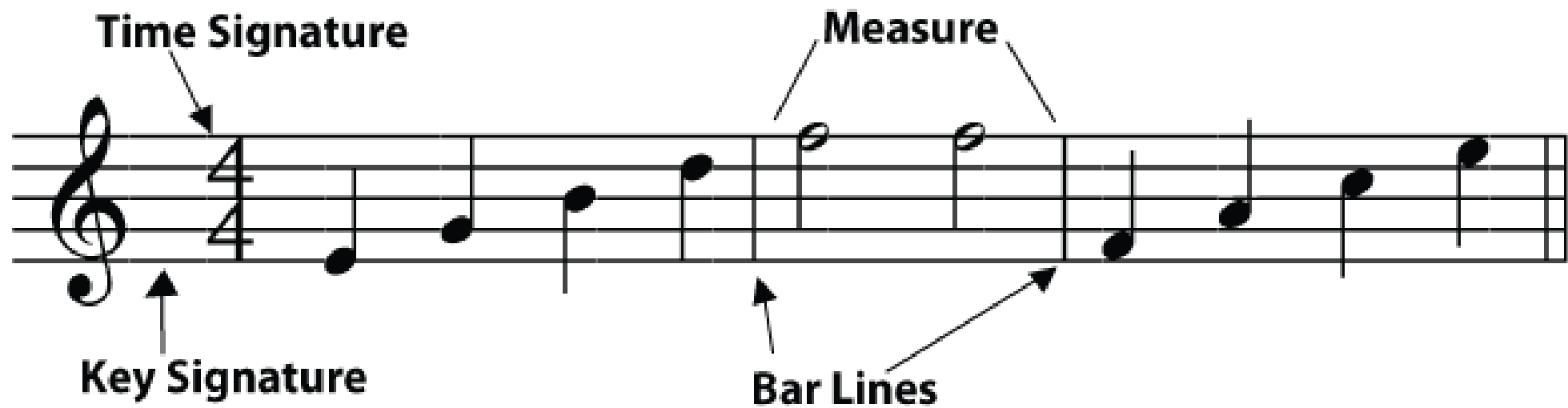


DRAFT CONCEPT STREETScape PLAN



DRAFT CONCEPT STREETScape PLAN

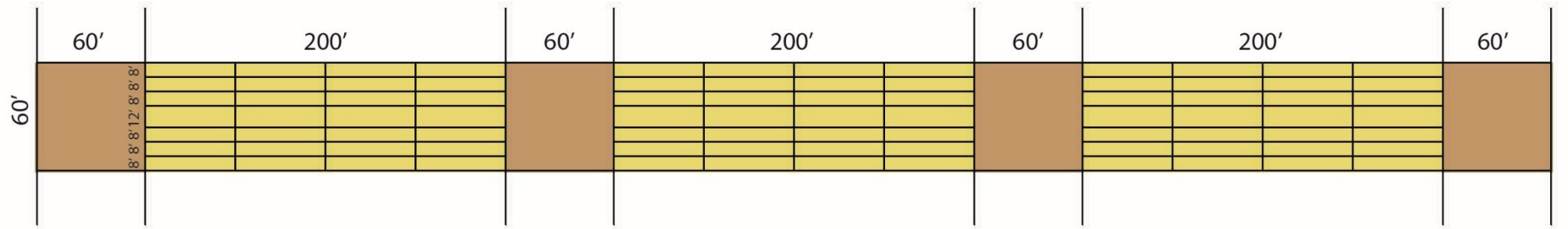
10 NOVEMBER 2015





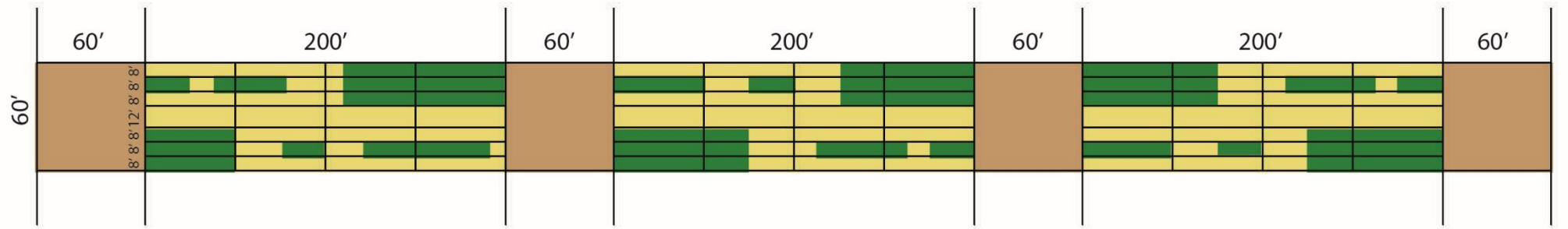
DRAFT CONCEPT STREETScape PLAN
10 NOVEMBER 2015





DRAFT CONCEPT STREETScape PLAN

10 NOVEMBER 2015



DRAFT CONCEPT STREETSCAPE PLAN

10 NOVEMBER 2015



DRAFT CONCEPT STREETScape PLAN

10 NOVEMBER 2015

ALPINE AVENUE MCMINNVILLE

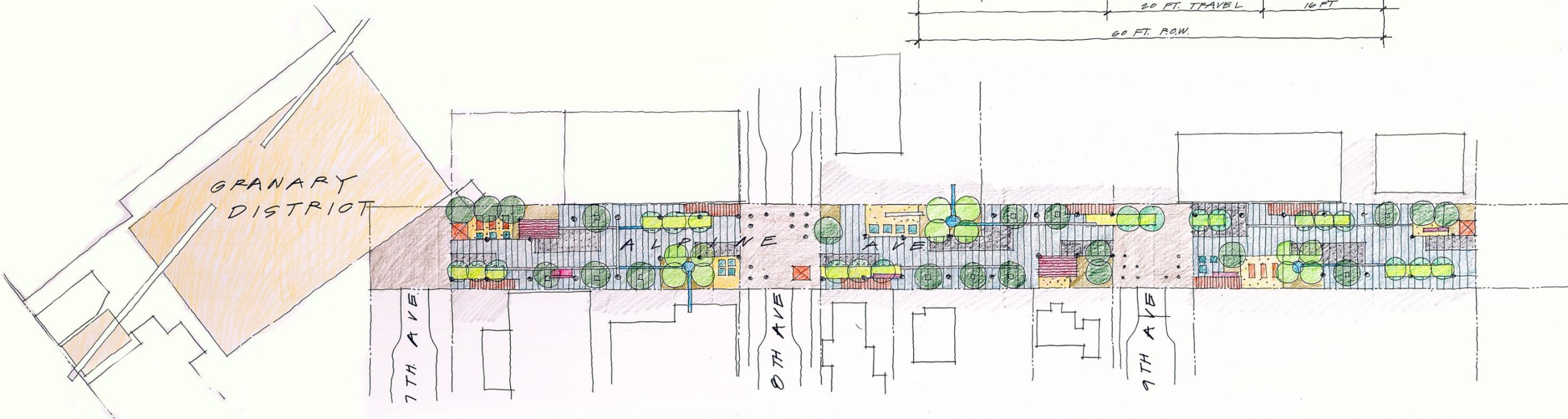
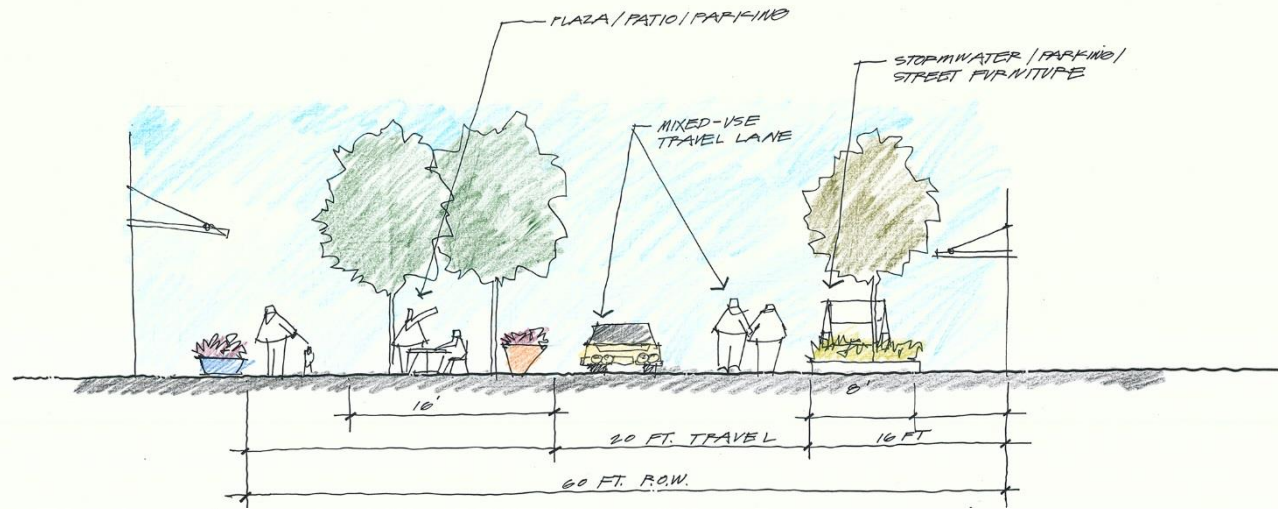
ORGANIZATION



DRAFT CONCEPT STREETScape PLAN

10 NOVEMBER 2015

ALPINE AVENUE MCMINNVILLE



DRAFT CONCEPT STREETScape PLAN



DRAFT CONCEPT STREETScape PLAN

10 NOVEMBER 2015

ALPINE AVENUE MCMINNVILLE



DRAFT CONCEPT STREETScape PLAN



DRAFT CONCEPT STREETScape PLAN



DRAFT CONCEPT STREETScape PLAN



DRAFT CONCEPT STREETScape PLAN



DRAFT CONCEPT STREETSCAPE PLAN

10 NOVEMBER 2015



DRAFT CONCEPT STREETScape PLAN

10 NOVEMBER 2015



DRAFT CONCEPT STREETScape PLAN

10 NOVEMBER 2015



DRAFT CONCEPT STREETScape PLAN

10 NOVEMBER 2015



DRAFT CONCEPT STREETScape PLAN

10 NOVEMBER 2015



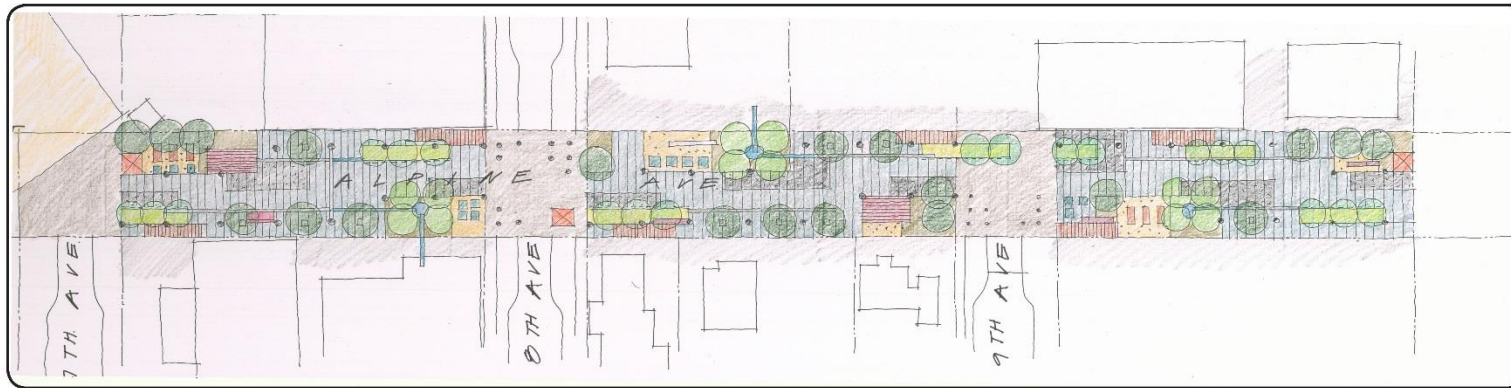
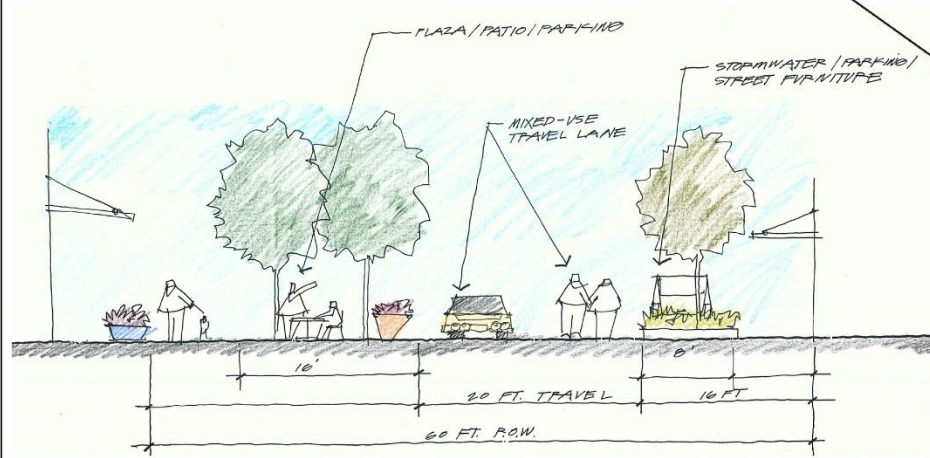
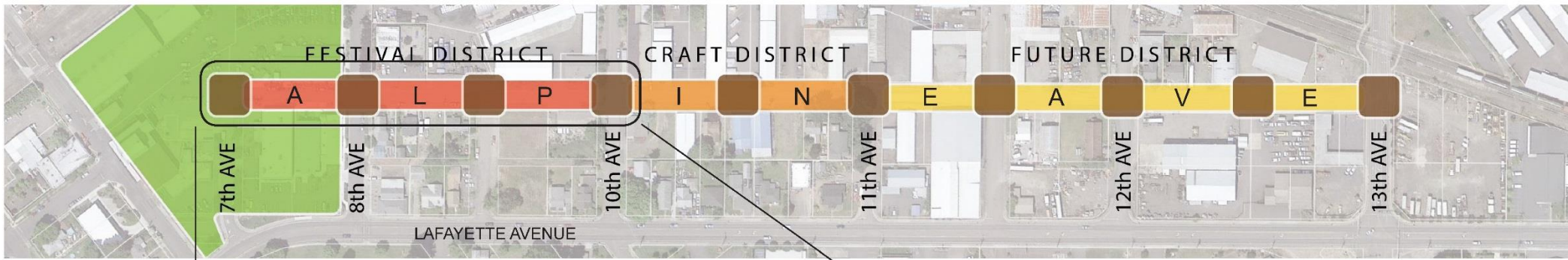
DRAFT CONCEPT STREETScape PLAN

10 NOVEMBER 2015



DRAFT CONCEPT STREETScape PLAN

10 NOVEMBER 2015



DRAFT CONCEPT STREETScape PLAN

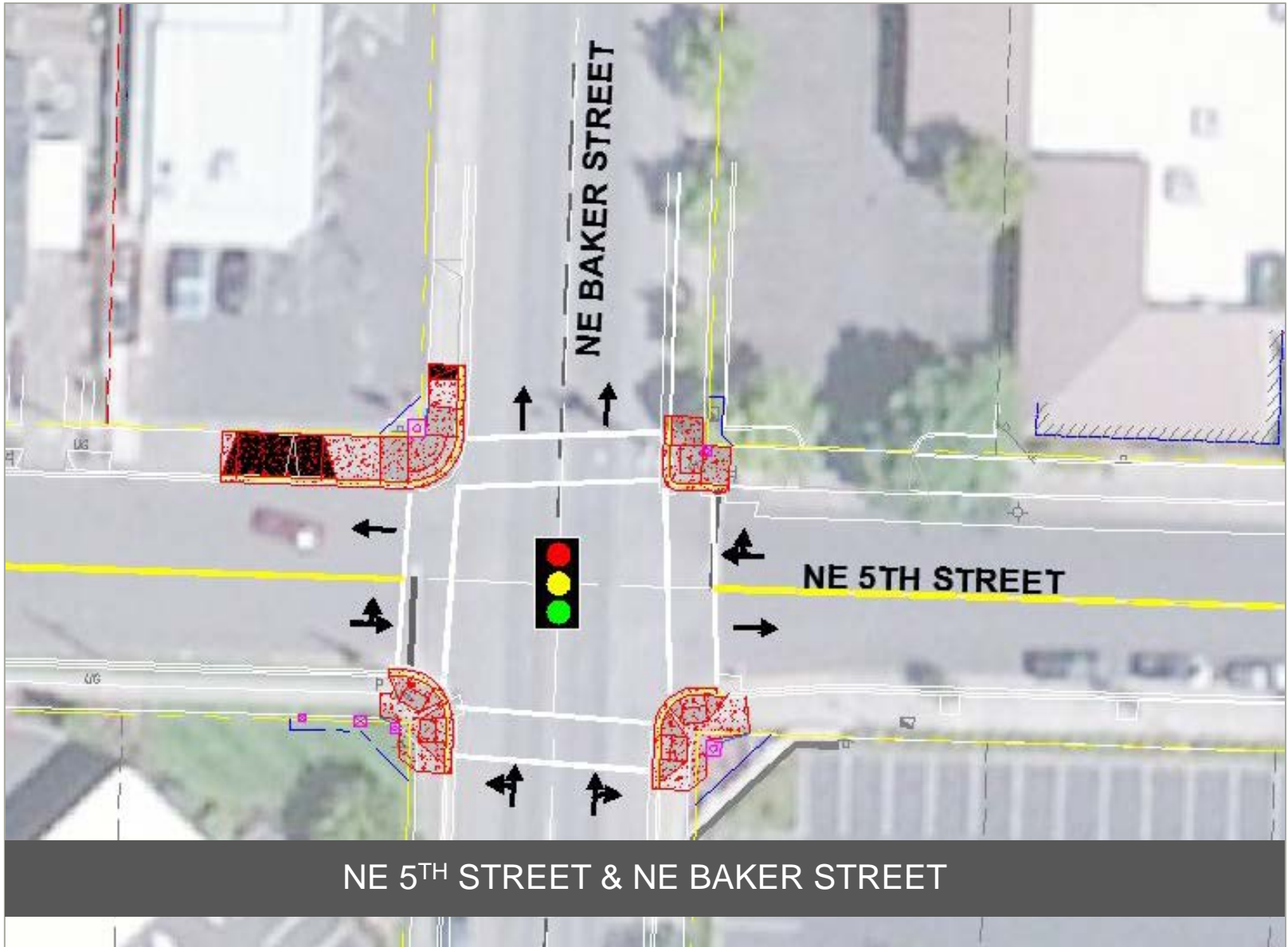
10 NOVEMBER 2015

5th Street Improvement Project

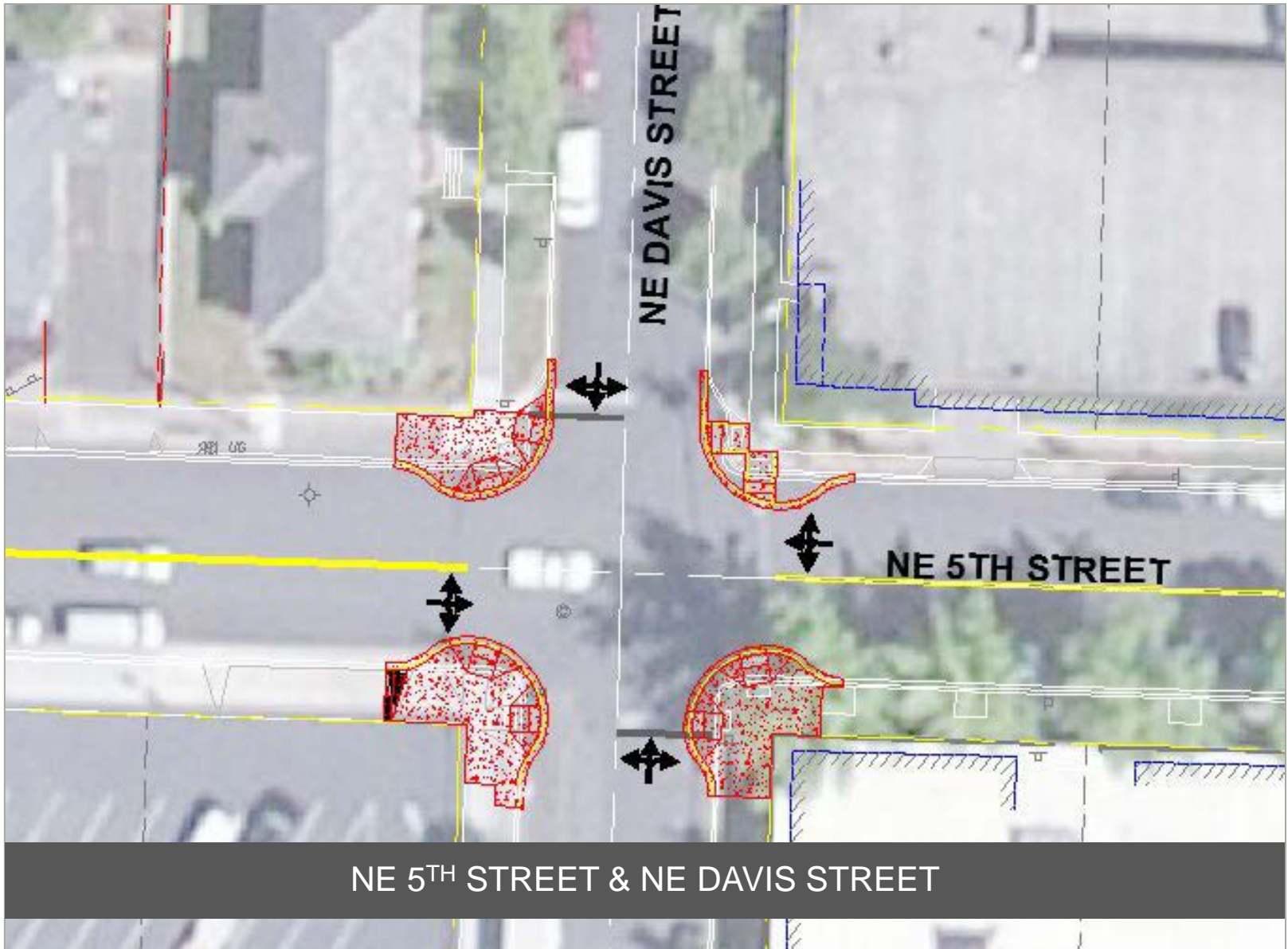




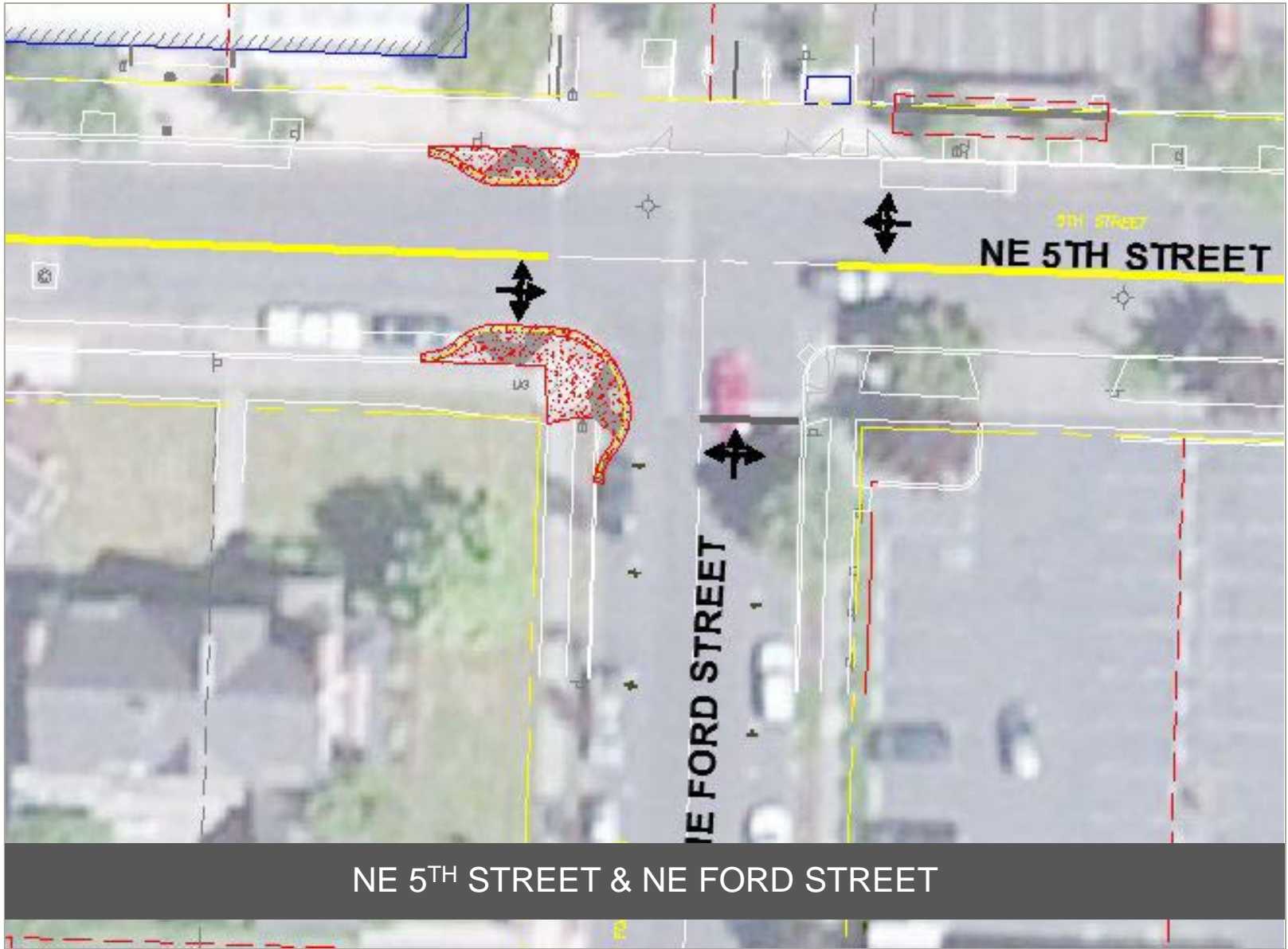
NE 5TH STREET & NW ADAMS STREET



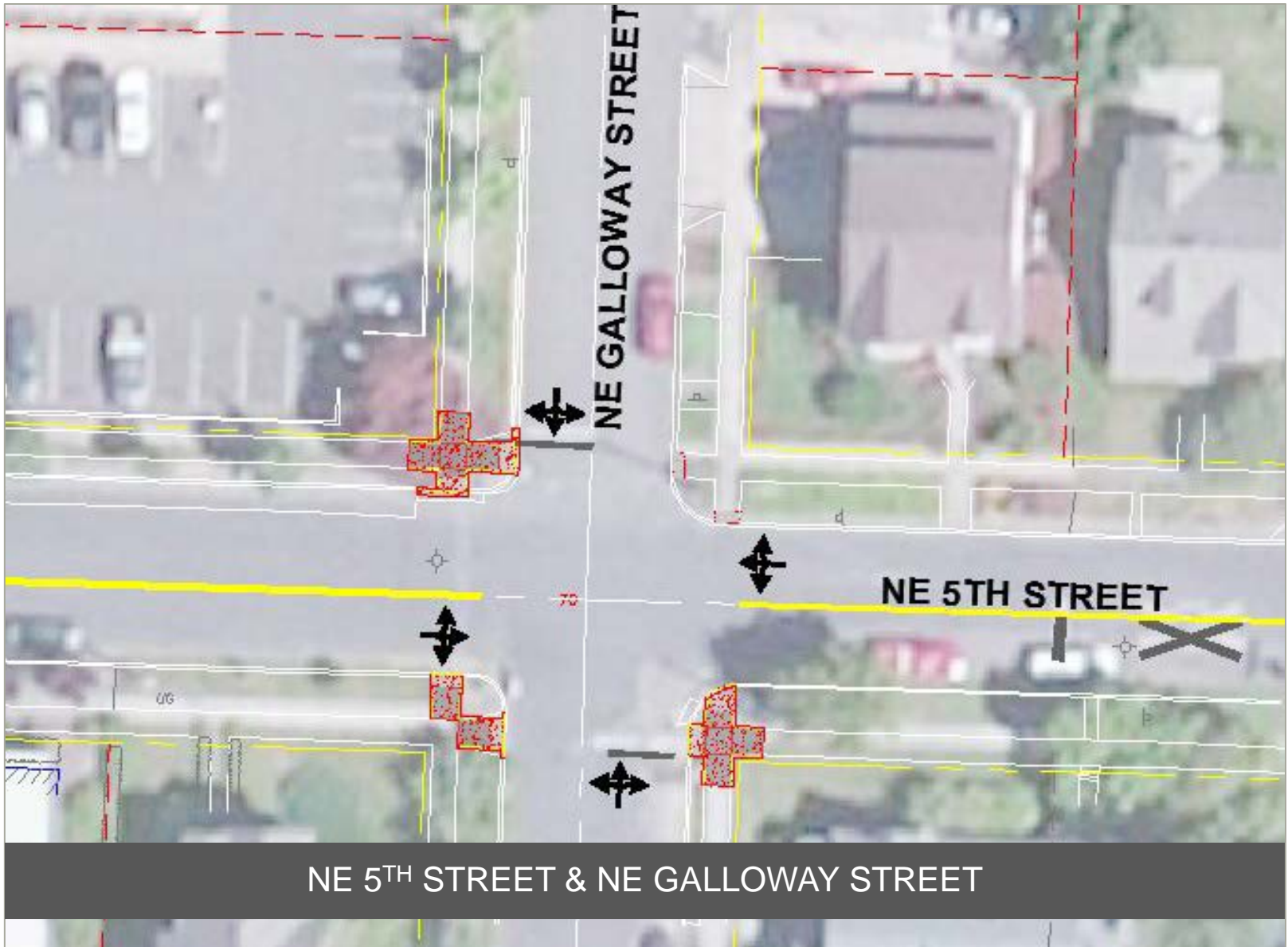
NE 5TH STREET & NE BAKER STREET







NE 5TH STREET & NE FORD STREET



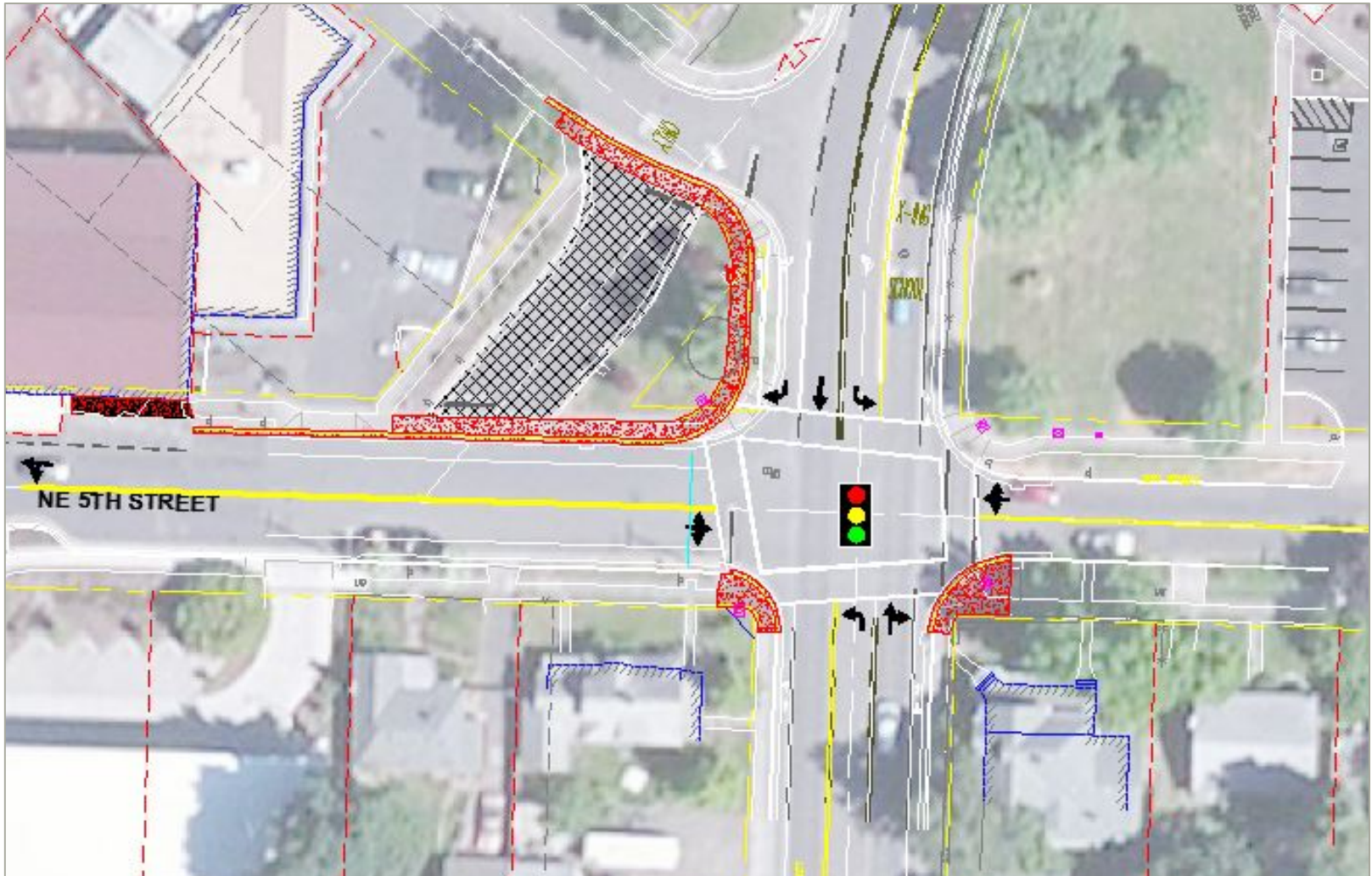
NE 5TH STREET & NE GALLOWAY STREET



NE 5TH STREET & NE IRVINE STREET



NE 5TH STREET & LAFAYETTE AVENUE
ROUNDBOUT



NE 5TH STREET & LAFAYETTE AVENUE
SIGNAL