



ROAD CONSTRUCTION NOTICE

PLEASE READ – IMPORTANT INFORMATION FOR RESIDENTS

Project Area: Paving work will be taking place in the following areas and in three different phases:

- **PHASE 1:** SW Cypress Street (South of SW Fellows St to the north property line of Discovery Meadows Park). Work to start here with the detour provided. (Next Page)
- **PHASE 2:** SW Fellows Street (Approx. 200 ft east of SW Cypress St to the west side of SW Westvale St)
- **PHASE 3:** SW Cypress Street (North of SW Fellows St for approx. 400 ft to SW Locust St)

Construction Dates:

Start: Monday, June 16, 2025

Estimated Completion: Wednesday, July 2, 2025

Estimated Project Completion: August 1st, 2025

Work Hours: 7:00 AM – 7:00 PM, Monday through Friday (Excluding Holiday Juneteenth)

IMPORTANT DETAILS:

- **Roadways will be closed to THROUGH traffic.**
This includes residents located in the middle of the construction zone—**please use posted detour routes** to navigate around work areas. Detour map is located on next page.
- **No on-street parking** will be allowed in the construction zones during work hours.
- Expect heavy equipment and active crews on-site throughout the day.
- Follow all **posted signage** and directions from **flaggers or crew members** for your safety.

We are prioritizing excavation and paving methods to ensure **long-term durability** of the roadway. Your **patience and cooperation** are essential in helping us reduce delays and maintain project efficiency.

We will do our best to coordinate traffic access when possible and minimize disruptions.


Special Instructions for Heidi Manor Residents:


Detour routes will vary depending on where daily work is occurring.

Barricades with detour arrows will be placed at **Heidi Manor entrances** to help guide you in the correct direction and avoid construction areas. Please see detour map included for routes during construction. We greatly appreciate your patience with this project.

Please watch for signage each day and follow directions to safely navigate in and out of the area.

Contractor: H&H Paving

 Phone: 503-399-4833

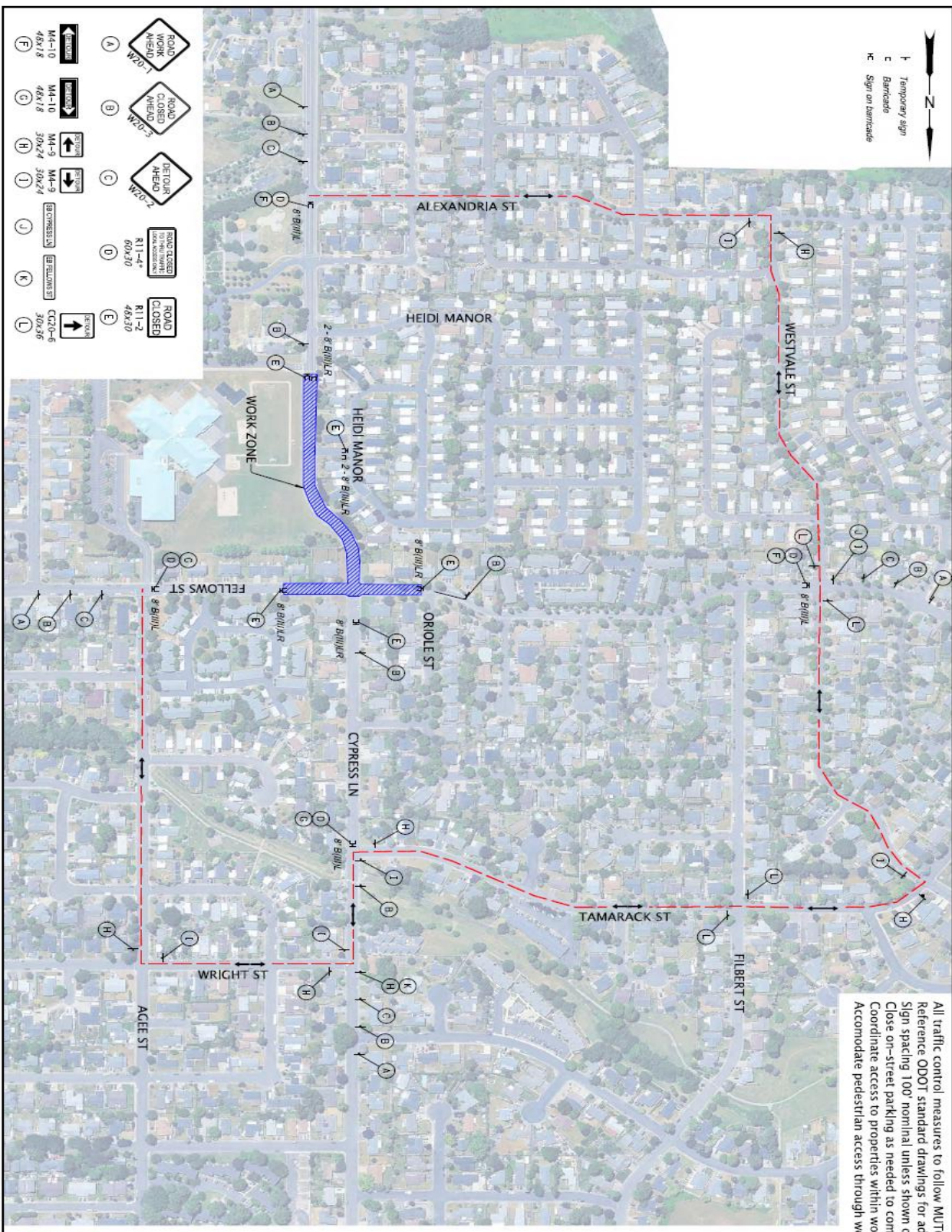
 Contact: Adam Newhouse – adam.newhouse@hhpave.net

Thank you for your understanding and support as we work to improve your neighborhood streets and infrastructure!

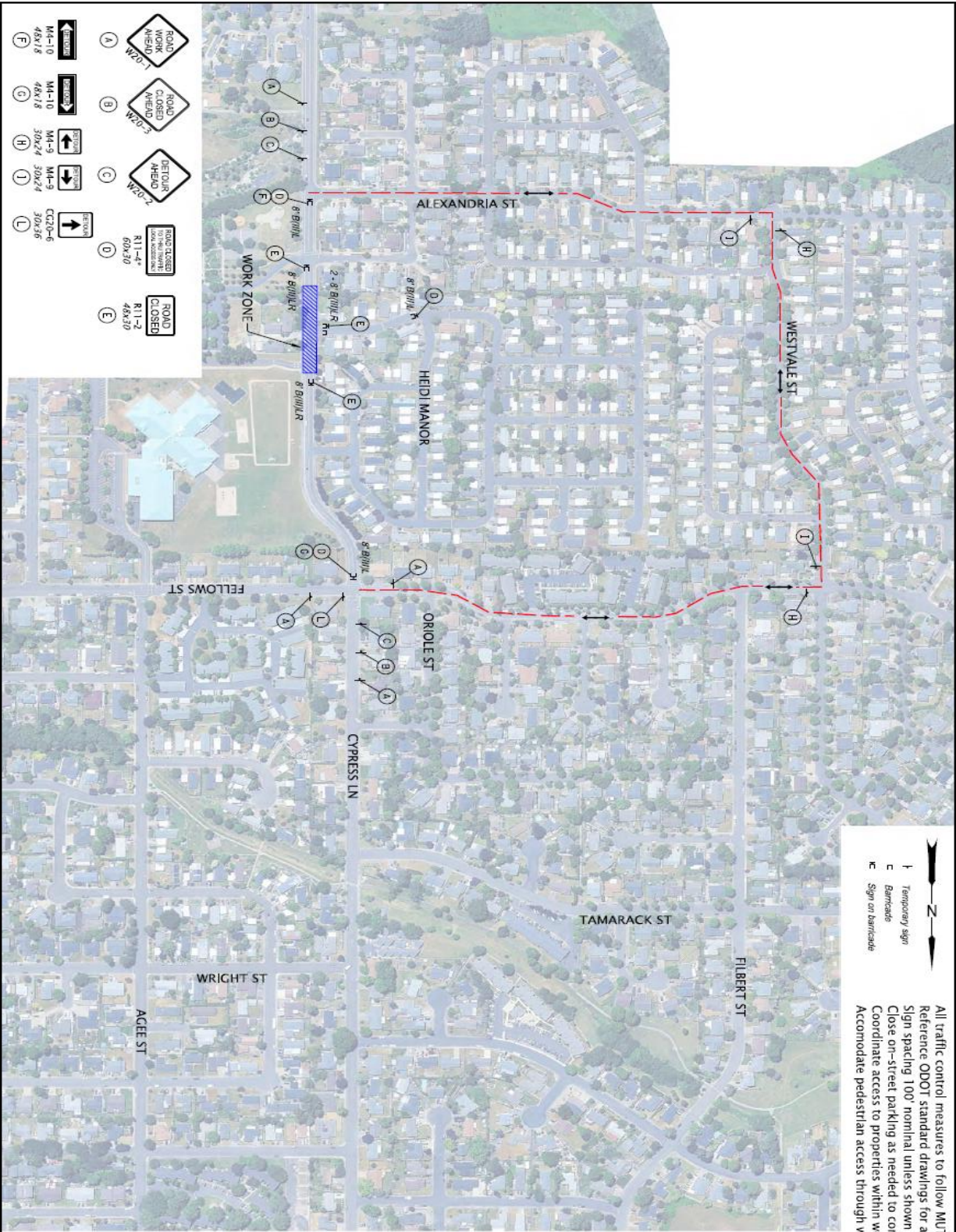
For more information, please visit the City's project web page

<https://www.mcminnvilleoregon.gov/engineering/page/cypress-and-fellows-paving-project>

- h Temporary sign
- c Barricade
- hc Sign on barricade



All traffic control measures to follow MUTCD standards. Reference ODOT standard drawings for additional details. Sign spacing 100' nominal unless shown otherwise. Close on-street parking as needed to complete work. Coordinate access to properties within work zone. Accommodate pedestrian access through work zone.



- ROAD WORK AHEAD 1-10'
- ROAD CLOSED AHEAD 1-10'
- LEFT TURN AHEAD 2-10'
- ROAD CLOSED AHEAD 10' to 1/2 MILE
- ROAD CLOSED 1/2 MILE
- ROAD CLOSED 1/2 MILE
- ROAD CLOSED 1/2 MILE
- ROAD CLOSED 1/2 MILE
- ROAD CLOSED 1/2 MILE
- ROAD CLOSED 1/2 MILE
- ROAD CLOSED 1/2 MILE
- ROAD CLOSED 1/2 MILE

- Temporary sign
- Barricade
- Sign on barricade

All traffic control measures to follow MUTCD standards. Reference ODOT standard drawings for additional details. Sign spacing 100' nominal unless shown otherwise. Close on-street parking as needed to complete work. Coordinate access to properties within work zone. Accommodate pedestrian access through work zone.