

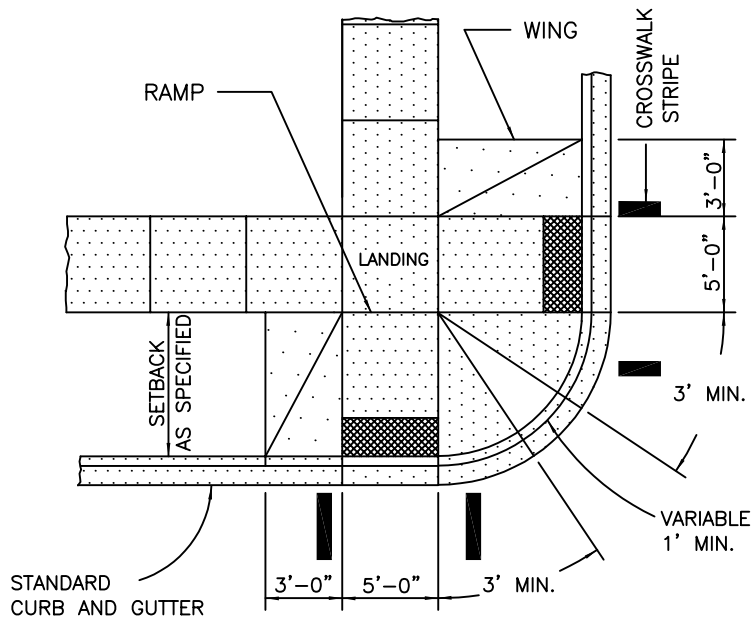


City of McMinnville Engineering Department
Standard Drawings

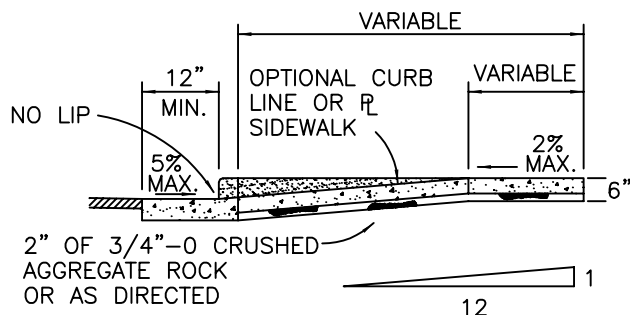
Bookmark Summary

[1_Detail_for_sidewalk_access_ramps](#)
[1A_Corner_Access_ramp_curbside_sidewalk](#)
[2_Detail_for_parallel_sidewalk_ramp](#)
[2A_Detail_for_parallel_sidewalk_ramp](#)
[3_Detail_for_driveway](#)
[3A_Detail_for_Curbside_Driveway_Approach](#)
[4_Detail_for_sidewalk-Model](#)
[5_Detail_for_curb_knockout_for_driveways](#)
[6_Detail_for_P.C._concrete_curb_and_gutter_4-29-25 Model](#)
[7_Detail_for_P.C._and_A.C._extruded_curb-Model](#)
[8_Detail_for_street_cut-Model](#)
[9A_Detail_for_trench_backfill_bedding_&_pipe_zone-Model](#)
[9B_Detail_for_trench_backfill_bedding_&_pipe_zone_private property-Model](#)
[11_Detail_for_combination_gutter_and_curb_inlet_catch_basin](#)
[12_Detail_for_gutter_inlet-Model](#)
[13_Detail_for_standard_manhole-Model](#)
[14_Detail_for_standard_manhole_base_section-Model](#)
[15_Detail_for_standard_low_profile_and_shallow_manhole-Model](#)
[18_Detail_for_standard_sanitary_cleanout-Model](#)
[18B_Detail_for_standard_sanitary_cleanout](#)
[19_Detail_for_concrete_cradle_and_cap_details-Model](#)
[20_Detail_for_concrete_valley_gutter](#)
[21_Detail_for_bore_casing_detail-Model](#)
[22_Detail_for_building_lateral_cleanout-Model](#)
[22a_Detail_for_property_line_cleanout-Model](#)
[24_Detail_for_inserta-tee_connection_to_existing_sewer-Model](#)
[25_Detail_for_service_saddle_connection_to_existing_sewer-Model](#)
[26_Detail_for_manhole_rim_adjustment-Model](#)
[27_Detail_for_parking_lot_catch_basin-Model](#)
[28_Detail_for_ditch_inlet-Model](#)
[29_Detail_for_barricade-Model](#)
[30_Pipe_anchor_detail-Model](#)
[34A_Detail_tree_well_tree_planting-Model](#)
[34B_Detail_planter_strip_tree_planting-Model](#)
[35_Detail_for_Clustered_Mailbox_Units-Model](#)
[40_Detail_for_typical_street_section](#)
[City of Mac Mon Box Detail](#)

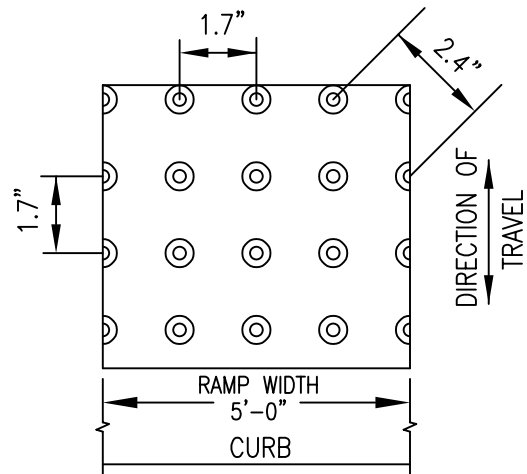
Cleanout Boxes



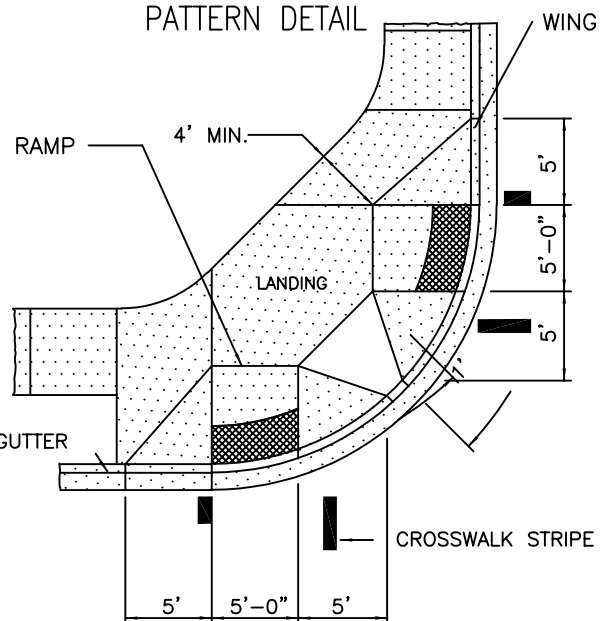
PERPENDICULAR CURB RAMPS (TYPE 1)



TYP. SECTION THROUGH DETAIL



RAMP TEXTURE
PATTERN DETAIL



PERPENDICULAR CURB RAMPS (TYPE 2)

NOTES:

1. ALL ACCESS RAMPS TO SIDEWALKS MUST CONFORM TO THIS STANDARD. EXCEPTIONS TO THE REQUIREMENTS IN THIS DRAWING MUST BE APPROVED BY THE ENGINEER AND MUST COMPLY WITH PROWAG.
2. RAMP LAYOUT AND LOCATION SHALL BE APPROVED BY THE CITY PRIOR TO CONSTRUCTION.
3. NO ABOVE-GROUND UTILITIES ARE PERMITTED WITHIN THE RAMP AREA.
4. INSTALL TRANSITION PANELS AS DIRECTED WHEN EXISTING ADJACENT SIDEWALK EXCEEDS 2% CROSS SLOPE.
5. DETECTABLE WARNING MATS WITH TRUNCATED DOMES SHALL BE CAST IN PLACE AND EXTEND THE FULL WIDTH OF THE LANDING; THE COLOR SHALL BE SAFETY YELLOW.
6. CONCRETE SHALL HAVE A 28 DAY ULTIMATE COMPRESSIVE STRENGTH OF 3300 PSI.
7. LANDING SLOPES SHALL BE DESIGNED AT 1.5% MAX., IN ANY DIRECTION. CONSTRUCTION NOT TO EXCEED 2% IN ANY DIRECTION. RAMPS SHALL BE DESIGNED AT 7.5% SLOPE MAX., WITH CONSTRUCTION NOT TO EXCEED 8.3%.
8. MINIMUM LANDING DIMENSIONS SHALL BE 5' x 5'.

**City of
McMinnville**

**DETAIL FOR
SIDEWALK ACCESS RAMPS**

DRAWN BY
JG

DATE:
NOVEMBER 2025

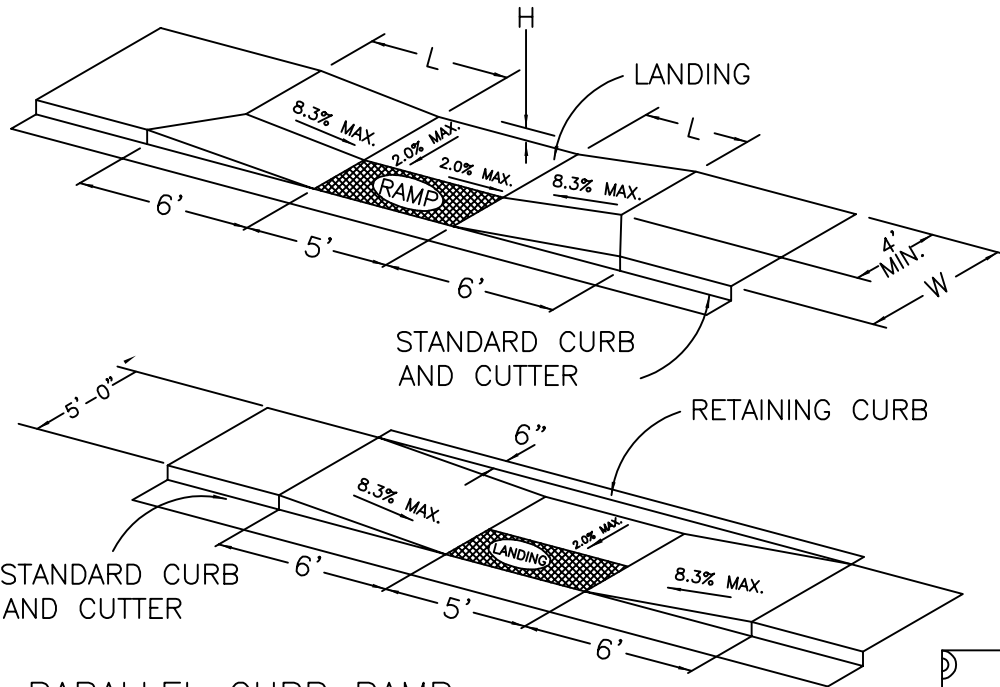
DRAWING NO.
1

Technical drawing of a truncated dome detail, showing three views:

- Cross-section (Left):** A semi-circular dome with a base diameter of 0.9". The height of the dome is 0.2". The radius of the dome is 0.4".
- Top View (Middle):** A circular view showing the base of the dome with a diameter of 0.9".
- Plan View (Right):** A square view showing the layout of the dome. The square has a side length of 5'-0" (labeled RAMP WIDTH). The distance between the centers of the domes is 1.7". The distance from the center of a dome to the edge of the square is 2.4". The direction of travel is indicated by an arrow pointing downwards.

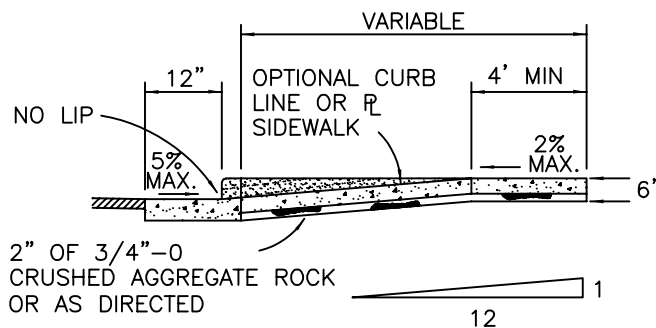


G:\DWGS\StdDwgs\1A_Corner_Access_ramp_curbside_sidewalk-Model.dwg

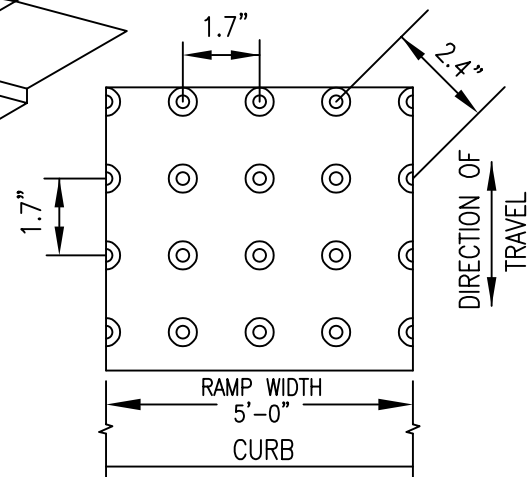


W	L	H
5'	4.25'	7/16"
5.5'	3.75'	13/32"
6'	3.73'	3/8"
6.5'	3.41'	11/32"
7.0'	3.10'	5/16"
7.5'	2.78'	9/32"
8.0'	2.46'	1/4"
8.5'	2.15'	7/32"
9.0'	1.83'	3/16"
9.5'	1.51'	5/32"
10'	1.20'	1/8"
10.5'	0.78'	3/32"

PARALLEL CURB RAMP



TYP. SECTION THROUGH DETAIL



RAMP TEXTURE DETAIL

NOTES:

1. ALL ACCESS RAMPS TO SIDEWALKS MUST CONFORM TO THIS STANDARD. EXCEPTIONS TO THE REQUIREMENTS IN THIS DRAWING MUST BE APPROVED BY THE ENGINEER AND MUST COMPLY WITH PROWAG.
2. RAMP LAYOUT AND LOCATION SHALL BE APPROVED BY THE CITY PRIOR TO CONSTRUCTION.
3. NO ABOVE-GROUND UTILITIES ARE PERMITTED WITHIN THE RAMP AREA.
4. INSTALL TRANSITION PANELS AS DIRECTED WHEN EXISTING ADJACENT SIDEWALK EXCEEDS 2% CROSS SLOPE.
5. DETECTABLE WARNING MATS WITH TRUNCATED DOMES SHALL BE CAST IN PLACE AND EXTEND THE FULL WIDTH OF THE LANDING; THE COLOR SHALL BE SAFETY YELLOW.
6. CONCRETE SHALL HAVE A 28 DAY ULTIMATE COMPRESSIVE STRENGTH OF 3300 PSI.
7. LANDING SLOPES SHALL BE DESIGNED AT 1.5% MAX., IN ANY DIRECTION. CONSTRUCTION NOT TO EXCEED 2% IN ANY DIRECTION. RAMPS SHALL BE DESIGNED AT 7.5% SLOPE MAX., WITH CONSTRUCTION NOT TO EXCEED 8.3%.
8. MINIMUM LANDING DIMENSIONS SHALL BE 5' x 5'.

**City of
McMinnville**

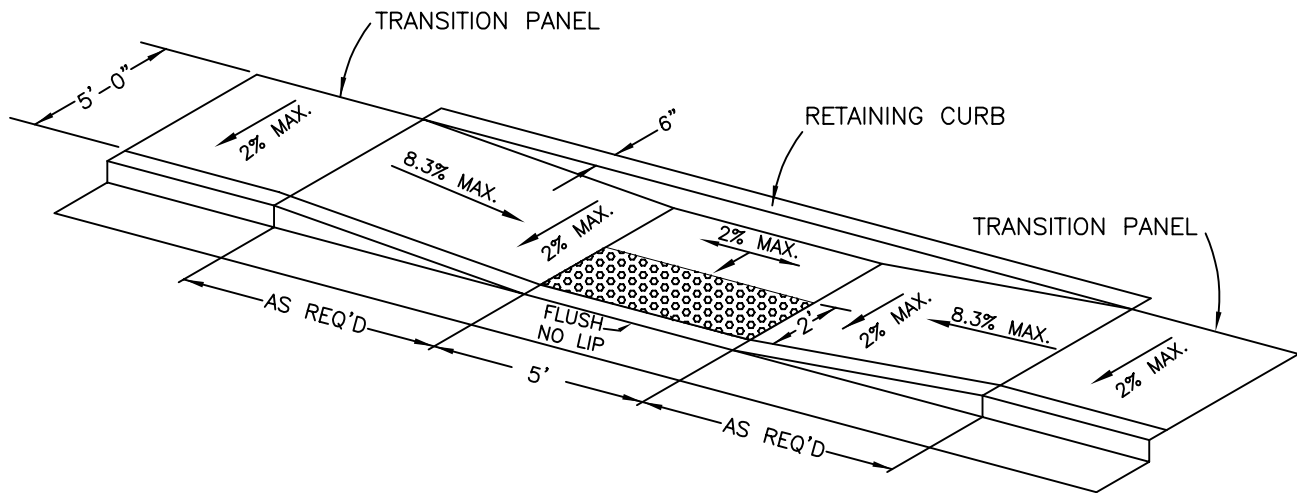
DETAIL FOR
PARALLEL
SIDEWALK RAMP

DRAWN BY
JG

DATE:
NOVEMBER 2025

DRAWING NO.
2

PARALLEL CURB RAMP



NOTES:

1. ALL ACCESS RAMPS TO SIDEWALKS MUST CONFORM TO THIS STANDARD. EXCEPTIONS TO THE REQUIREMENTS IN THIS DRAWING MUST BE APPROVED BY THE CITY ENGINEERING DEPARTMENT AND MUST COMPLY WITH PROWAG.
2. RAMP LAYOUT AND LOCATION SHALL BE APPROVED BY THE CITY PRIOR TO CONSTRUCTION.
3. NO ABOVE-GROUND UTILITIES ARE PERMITTED WITHIN THE RAMP OR LANDING AREA.
4. INSTALL TRANSITION PANELS AS DIRECTED WHEN EXISTING ADJACENT SIDEWALK EXCEEDS 2% CROSS SLOPE.
5. DETECTABLE WARNING MATS WITH TRUNCATED DOMES SHALL BE CAST IN PLACE AND EXTEND THE FULL WIDTH OF THE LANDING; THE COLOR SHALL BE SAFETY YELLOW.
6. CONCRETE STRENGTH SHALL HAVE A 28 DAY ULTIMATE COMPRESSIVE STRENGTH OF 3300 PSI.
7. LANDING SLOPES SHALL BE DESIGNED AT 1.5% MAX., IN ANY DIRECTION. CONSTRUCTION NOT TO EXCEED 2% IN ANY DIRECTION. RAMPS SHALL BE DESIGNED AT 7.5% SLOPE MAX., WITH CONSTRUCTION NOT TO EXCEED 8.3%.
8. MINIMUM LANDING DIMENSIONS SHALL BE 5' x 5'.

**City of
McMinnville**

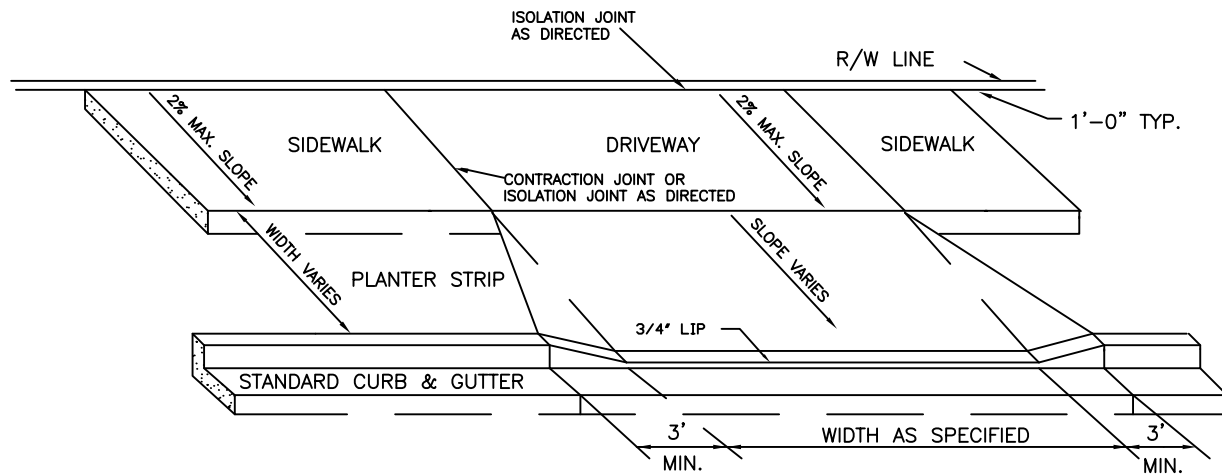
DETAIL FOR
PARALLEL CURBSIDE
SIDEWALK RAMP

DATE:

MAY 2025

DRAWING NO.

2A



DRIVEWAY / ALLEY APPROACH FOR SIDEWALK WITH PLANTER STRIP

NOTES:

- 1) ALL RESIDENTIAL DRIVEWAYS AND SIDEWALK SECTIONS THROUGH DRIVEWAYS SHALL HAVE A NOMINAL THICKNESS OF 6" OF CONCRETE. ALL COMMERCIAL/INDUSTRIAL DRIVEWAYS SHALL INCLUDE REBAR OR HAVE NOMINAL THICKNESS INCREASED TO 8". CONCRETE SHALL HAVE A 28 ULTIMATE COMPRESSIVE STRENGTH OF 3300 PSI.
- 2) WING SECTIONS BETWEEN FULL CURB HEIGHT AND DRIVEWAY SHALL BE 3' MINIMUM.
- 3) DEPENDING ON THE WIDTH OF THE DRIVEWAY OR ALLEY APPROACH, CONSTRUCT ONE OR MORE CONTRACTION JOINTS.
- 4) SEE STANDARD DETAIL 5 (CURB KNOCK-OUT) FOR INSTALLATIONS IN EXISTING CURB AND GUTTER.
- 5) ALL WORK SHALL COMPLY WITH CURRENT P.R.O.W.A.G. GUIDELINES AND THE CURRENT EDITION OF OREGON STANDARD SPECIFICATIONS FOR CONSTRUCTION.
- 6) SIDEWALK DESIGN, INCLUDING THROUGH DRIVEWAY APPROACH, SHOULD BE DESIGNED AT 1.5% CROSS SLOPE MAX., WITH CONSTRUCTION AT 2.0% MAX.
- 7) CONCRETE FINISH SHALL BE BROOMED WITH 4" MAX. WIDTH AND 3/8" RADIUS SHINED EDGES.

**City of
McMinnville**

DETAIL FOR
DRIVEWAY WITH PLANTER STRIP

DRAWN BY

JG

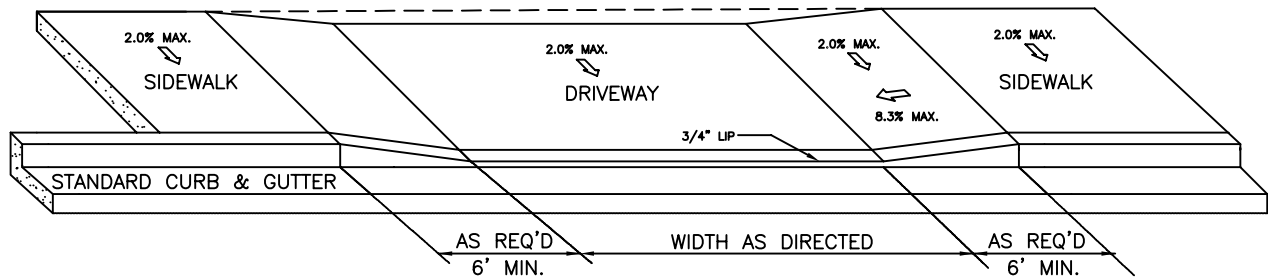
DATE:

NOVEMBER 2025

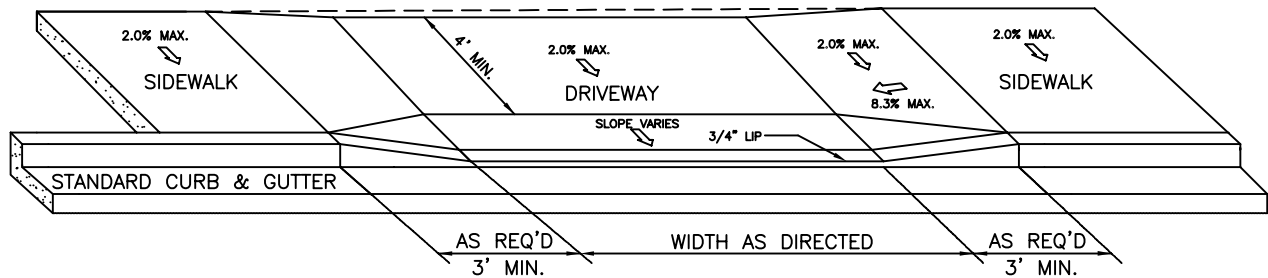
DRAWING NO.

3

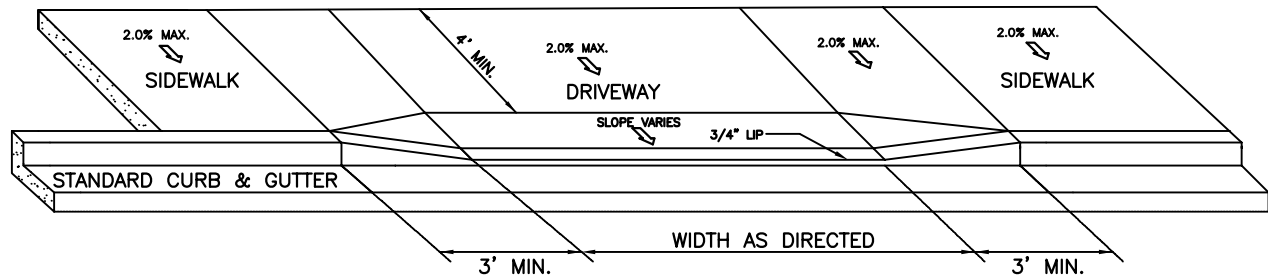
FULLY LOWERED DRIVEWAY APPROACH



PARTIALLY LOWERED DRIVEWAY APPROACH



NON LOWERED DRIVEWAY APPROACH



NOTES

- 1) ALL RESIDENTIAL DRIVEWAY AND SIDEWALK SECTIONS THROUGH DRIVEWAYS SHALL HAVE A NOMINAL THICKNESS OF 6\"
- 2) WING SECTIONS BETWEEN FULL CURB HEIGHT AND DRIVEWAY SHALL BE 6\"
- 3) DEPENDING ON THE WIDTH OF THE DRIVEWAY OR ALLEY APPROACH, CONSTRUCT ONE OR MORE CONTRACTION JOINTS
- 4) SEE STANDARD DETAIL 5 (CURB KNOCK-OUT) FOR INSTALLATION IN EXISTING CURB & GUTTER.
- 5) ALL WORK SHALL COMPLY WITH CURRENT PROWAG GUIDELINES AND THE CURRENT EDITION OF THE OREGON STANDARD SPECIFICATIONS FOR CONSTRUCTION.
- 6) SIDEWALK DESIGN, INCLUDING THROUGH DRIVEWAY APPROACH, SHOULD BE DESIGNED AT 1.5% CROSS SLOPE MAX., WITH CONSTRUCTION AT 2.0% MAX.
- 7) CONCRETE FINISH SHALL BE BROOMED WITH 4\"
- 8) FULLY LOWERED DRIVEWAY APPROACHES ARE REQUIRED FOR ARTERIAL AND COLLECTOR STREETS

**City of
McMinnville**

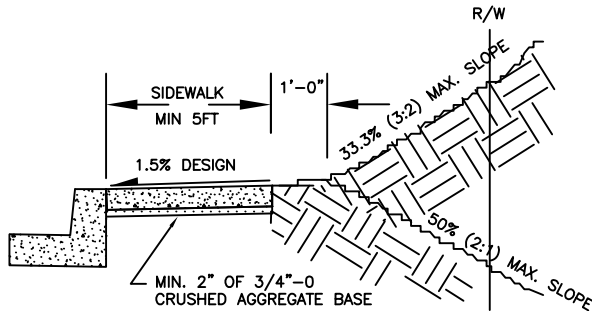
RESIDENTIAL & COMMERCIAL
CURBSIDE DRIVEWAY APPROACH

DATE:
MAY 2025

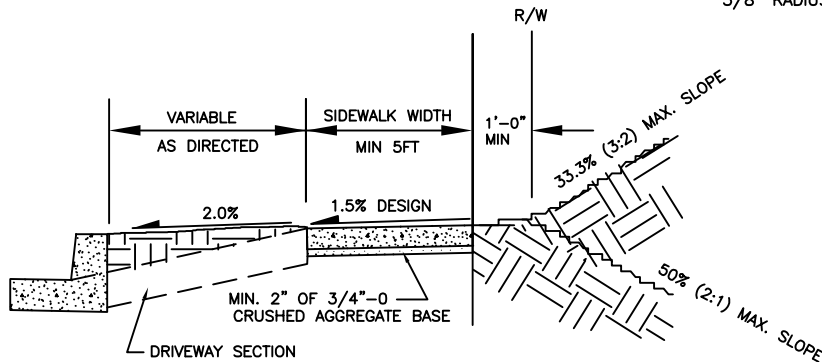
DRAWING NO. 3A

NOTES:

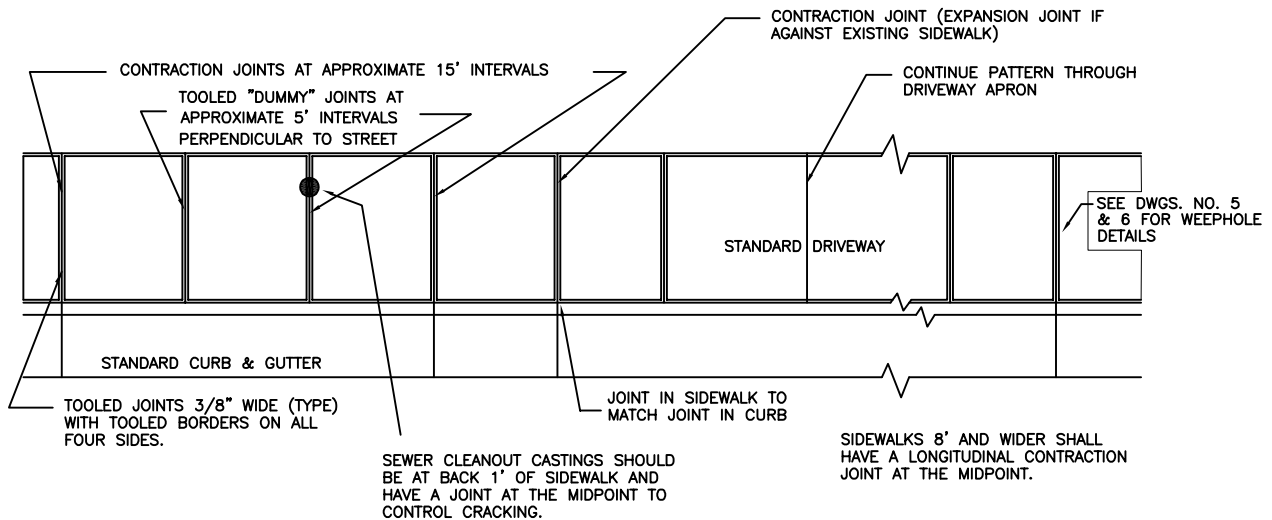
- 1) SIDEWALK DESIGN SHOULD BE DESIGNED AT 1.5% CROSS SLOPE MAX., WITH CONSTRUCTION AT 2.0% MAX.
- 2) CONCRETE DEPTH FOR STANDARD SIDEWALKS SHALL BE NOMINAL 4" MIN. ALL RESIDENTIAL DRIVEWAYS AND SIDEWALK SECTIONS THROUGH DRIVEWAYS SHALL HAVE A NOMINAL THICKNESS OF 6" OF CONCRETE. ALL COMMERCIAL/INDUSTRIAL DRIVEWAYS SHALL INCLUDE REBAR OR HAVE NOMINAL THICKNESS INCREASED TO 8". CONCRETE SHALL HAVE A 28 ULTIMATE COMPRESSIVE STRENGTH OF 3300 PSI.
- 3) EXPANSION JOINTS WITH PREMOLDED FILLER SHALL BE INSTALLED BETWEEN DRIVEWAYS AND SIDEWALK AT THE DIRECTION OF THE CITY ENGINEER. (SEE DRIVEWAY DETAILS 3 AND 3A)
- 4) CONTRACTION JOINTS SHALL BE INSTALLED AT APPROXIMATE INTERVALS OF 15 FEET BY CUTTING AT LEAST 1/3 OF THE DEPTH OF THE CONCRETE. "DUMMY" JOINTS SHALL BE INSTALLED AT APPROXIMATE INTERVALS OF 5 FEET. JOINTS TO BE MADE PERPENDICULAR TO STREET.
- 5) INSTALL A BOND BREAKER OR ISOLATION JOINT BETWEEN BACK OF CURB AND SIDEWALK, AND AROUND ANY OBSTRUCTION WITHIN SIDEWALK AREA.
- 6) SEE STANDARD RAMP DETAILS FOR SIDEWALK PATTERNS AT INTERSECTION CURB RETURNS AND PARALLEL RAMPS.
- 7) CONCRETE FINISH SHALL BE BROOMED WITH 4" MAX. WIDTH AND 3/8" RADIUS SHINED EDGES.



TYPICAL CURB TYPE CROSS SECTION



TYPICAL SETBACK TYPE CROSS SECTION



TYPICAL PLAN VIEW

**City of
McMinnville**

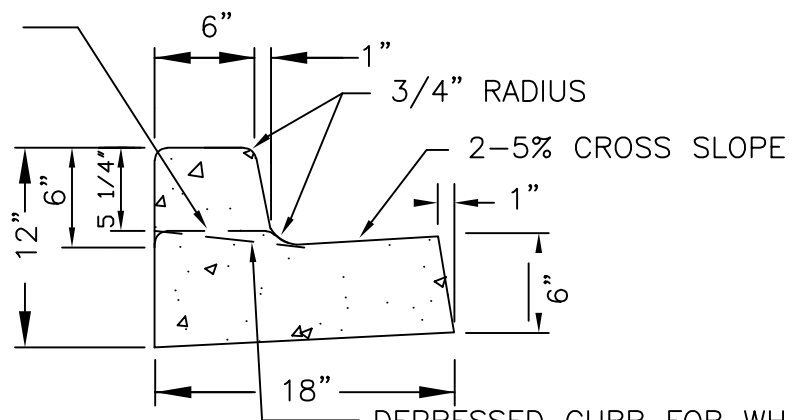
DETAIL FOR
SIDEWALK

DRAWN BY
JG

DATE:
NOVEMBER 2025

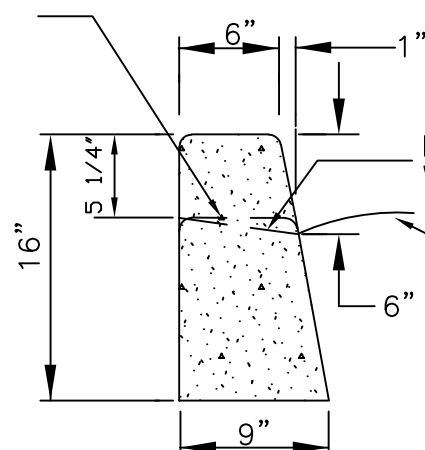
DRAWING NO.
4

DEPRESSED CURB
FOR DRIVEWAY
(3/4" MAX. LIP)



DEPRESSED CURB FOR WHEELCHAIR RAMP
WITH 2% MAX. CONSTRUCTION SLOPE
TYPICAL CURB & GUTTER

DEPRESSED CURB
FOR DRIVEWAY
(3/4" MAX. LIP)



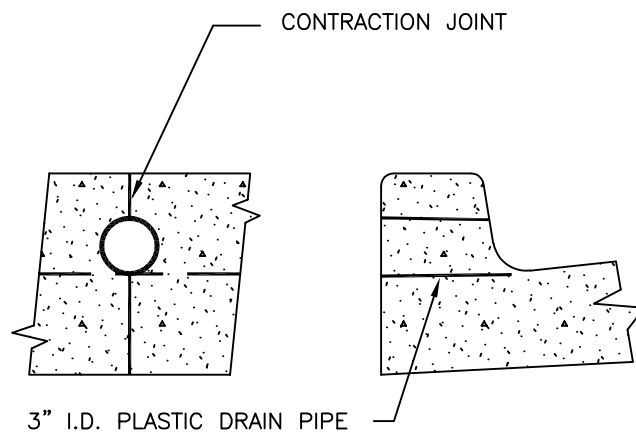
DEPRESSED CURB FOR WHEELCHAIR RAMP
WITH 2% MAX. CONSTRUCTION SLOPE

PAVEMENT

TYPICAL STRAIGHT CURB

NOTES:

1. ALL RADII SHALL BE 3/4" EXCEPT AS OTHER- WISE SHOWN.
2. ISOLATION JOINTS SHALL BE PLACED ONLY AS SPECIFIED BY THE CITY ENGINEER.
3. CONTRACTION JOINTS SHALL BE PLACED AT 15' INTERVALS UNLESS OTHERWISE SPECIFIED, AND SHALL EXTEND AT LEAST 50% THROUGH THE CURB OR CURB & GUTTER.
4. A CONTRACTION JOINT SHALL BE PLACED ALONG AND OVER WEEP HOLE THROUGH THE CURB AND THROUGH THE SIDEWALK.
5. WHEN SIDEWALKS ARE CONSTRUCTED, EXTEND 3" PIPE TO BACK OF SIDEWALK AND INSTALL COUPLING.



WEEP HOLE THROUGH CURB

**City of
McMinnville**

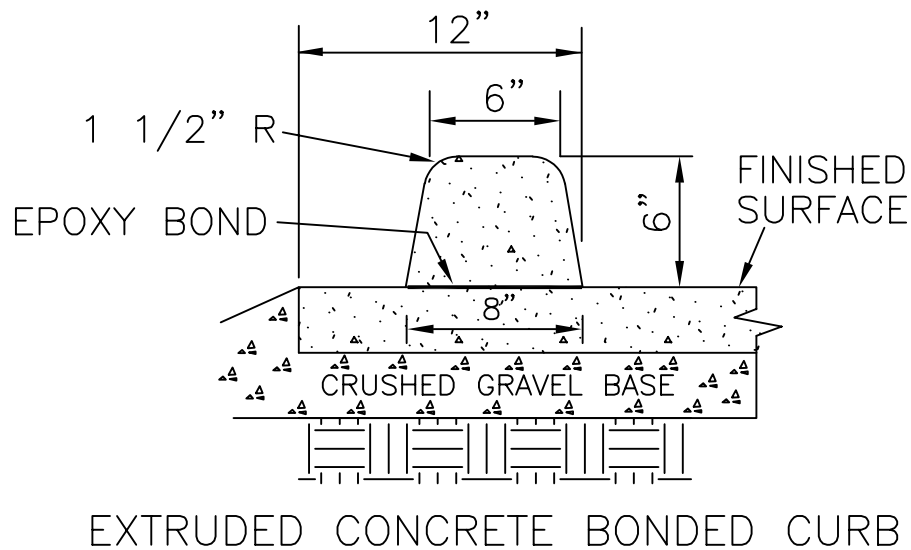
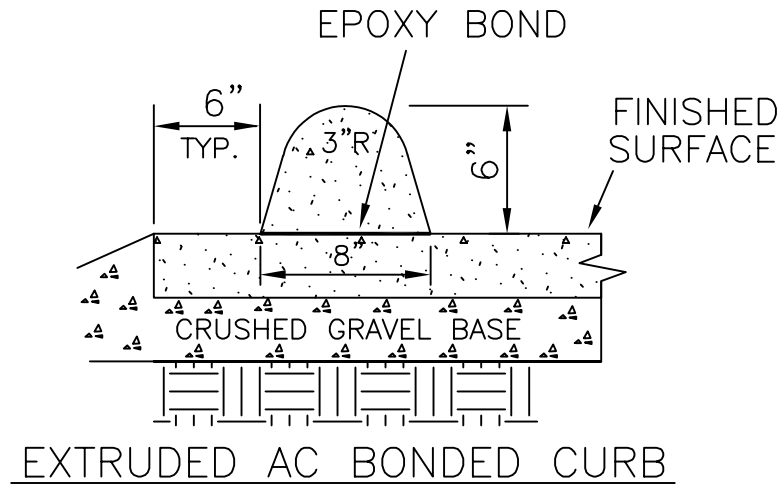
DETAIL FOR
P.C. CONCRETE
CURB AND GUTTER

DATE:

APRIL 2025

DRAWING NO.

6



NOTES:

1. ISOLATION JOINTS SHALL BE PLACED ONLY AS SPECIFIED BY THE CITY ENGINEER.
2. CONTRACTION JOINTS SHALL BE PLACED AT 15' INTERVALS UNLESS OTHERWISE SPECIFIED, AND SHALL EXTEND AT LEAST 50% THROUGH THE CURB OR CURB & GUTTER.

**City of
McMinnville**

DETAIL FOR
P.C. AND A.C.
EXTRUDED CURB

DATE:

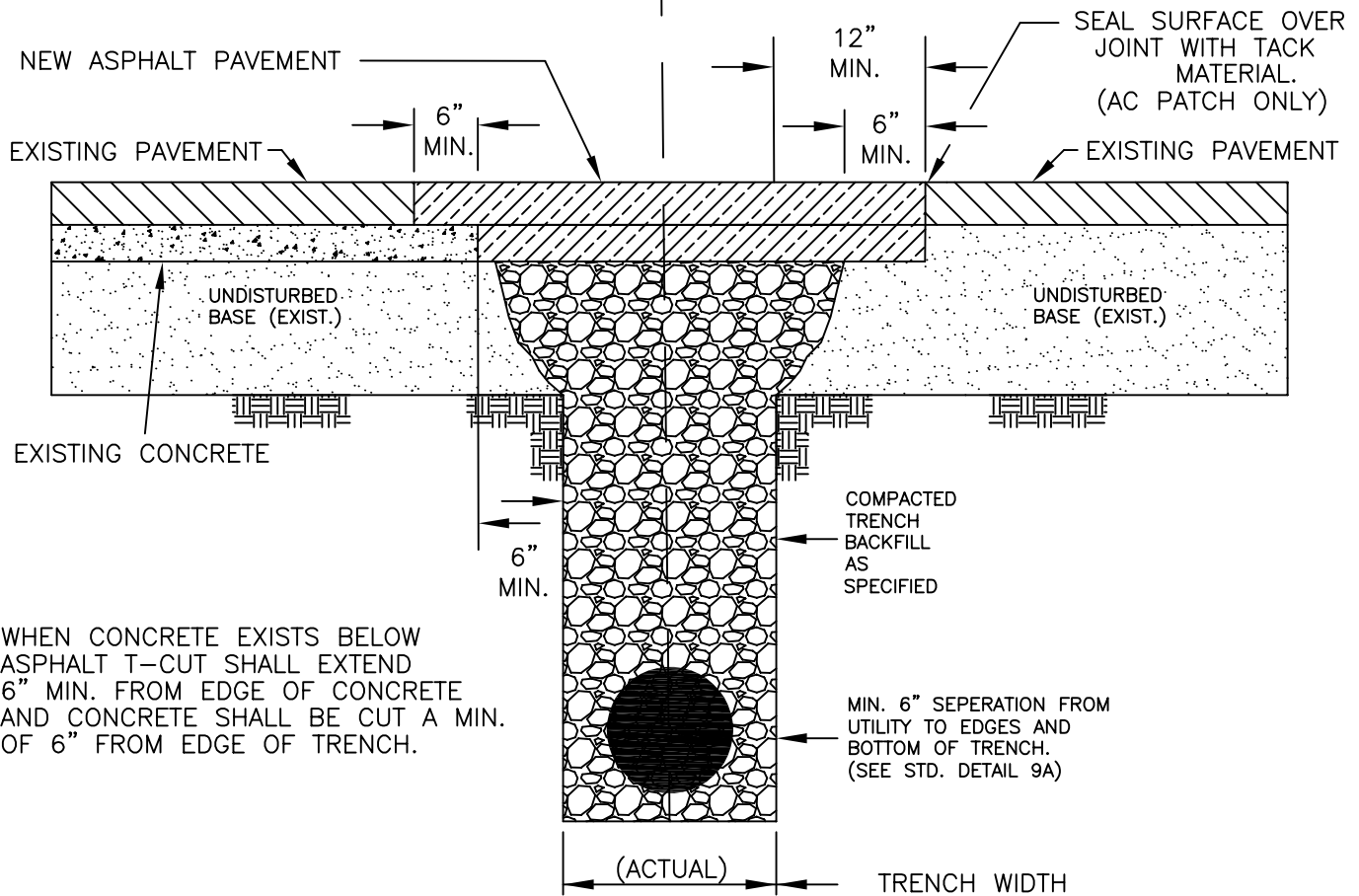
MAY 2025

DRAWING NO.

7

STREET SECTION WITH
ASPHALT OVER CONCRETE

STREET SECTION WITH
ASPHALT OVER SUBGRADE



WHEN CONCRETE EXISTS BELOW ASPHALT T-CUT SHALL EXTEND 6" MIN. FROM EDGE OF CONCRETE AND CONCRETE SHALL BE CUT A MIN. OF 6" FROM EDGE OF TRENCH.

NOTES:

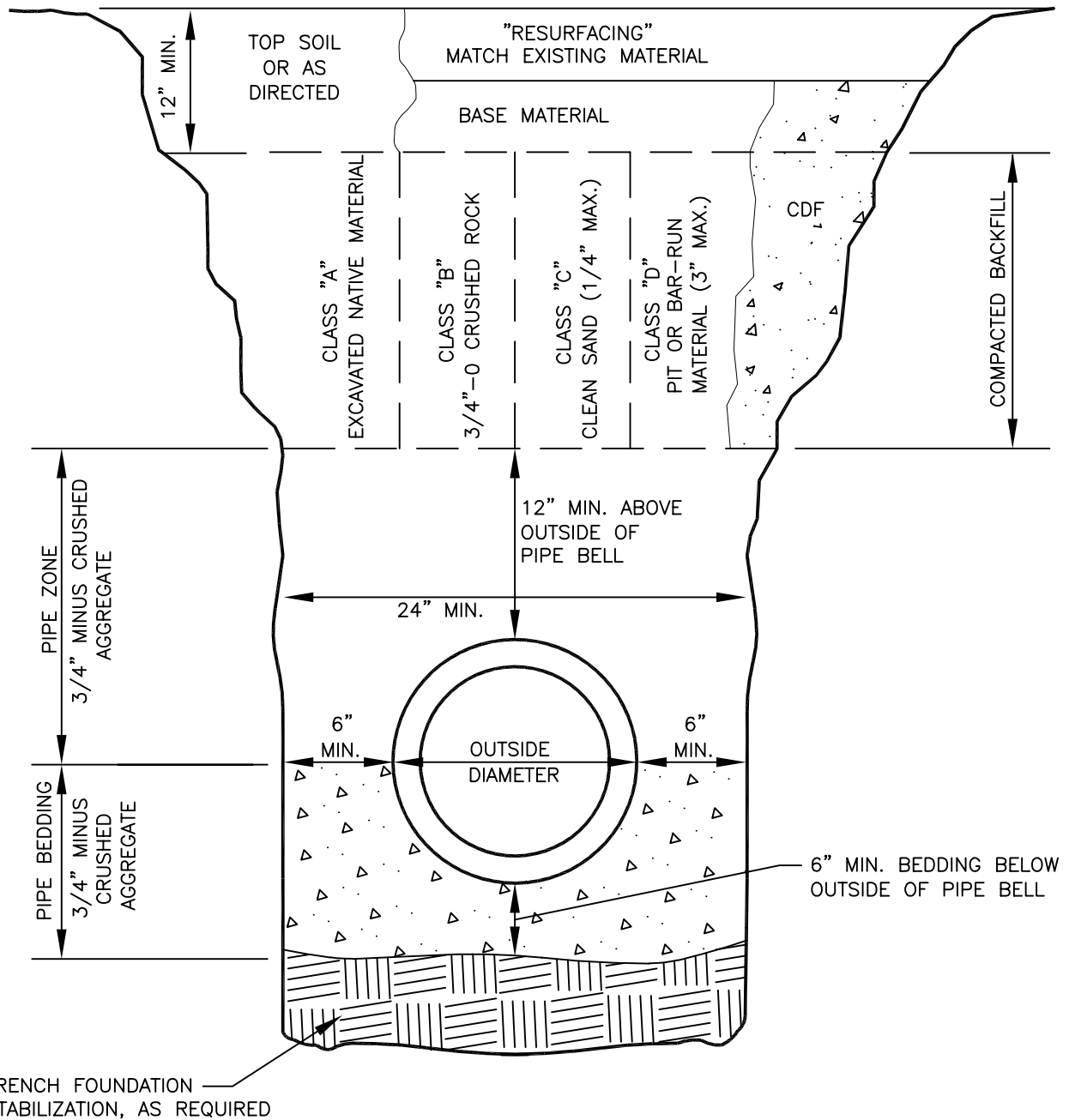
- 1) LIMITS OF TRENCH PATCH SHALL BE APPROVED BY CITY ENGINEER PRIOR TO PAVING. LIMITS WILL BE A MINIMUM OF 12" FROM EDGE OF TRENCH.
- 2) AC PAVEMENT SHALL BE REPLACED WITH AC TO A MINIMUM THICKNESS OF 6" OR TO THE THICKNESS OF REMOVED PAVEMENT, WHICHEVER IS GREATER. EACH LIFT SHALL BE A MAXIMUM OF 3". IF PAVING OVER EXISTING CONCRETE, THE ASPHALT PATCH SHALL BE 3" WITH A MINIMUM 6" OFFSET JOINT FROM THE EDGE OF CONCRETE.
- 3) USE 1/2" DENSE LEVEL II WMAC MIX OR AS APPROVED BY CITY ENGINEER. COLD MIX SHALL BE REPLACED WITH 1/2" DENSE LEVEL II WMAC.

**City of
McMinnville**

DETAIL FOR
STREET CUT

DATE:
MAY 2025

DRAWING NO. **8**



NOTE:

SURFACING OF PAVED AREAS SHALL COMPLY WITH STREET CUT STANDARD DWG. NO. 8.

**City of
McMinnville**

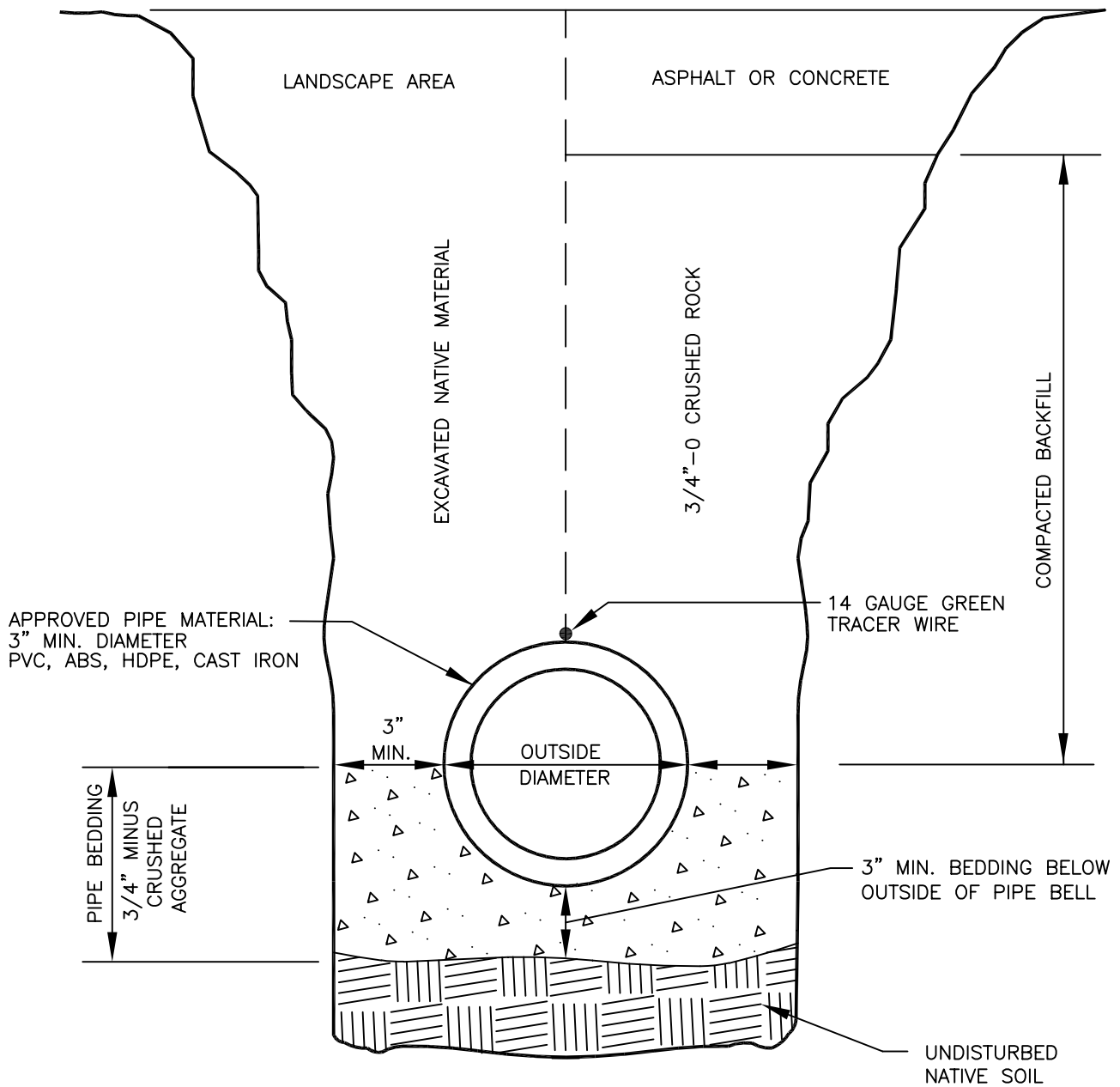
DETAIL FOR
TRENCH BACKFILL
BEDDING & PIPE ZONE

DATE:

MAY 2025

DRAWING NO.

9A



NOTES:

1. MIN. PIPE SLOPE 2% (1/4 INCH PER FOOT).
2. CLEANOUT MUST BE WITHIN 2 FEET OF HOUSE.
3. CLEANOUT EVERY 100 FEET AND/OR 135 DEGREES OF BEND.

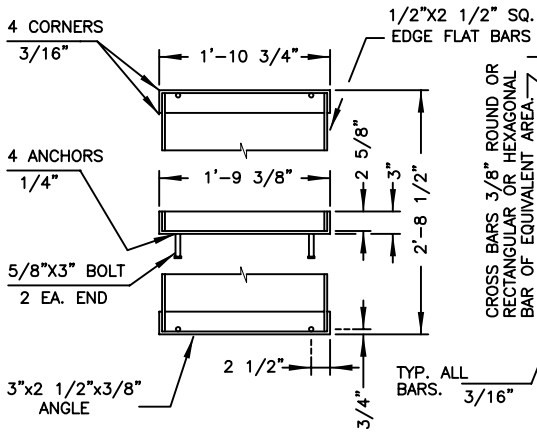
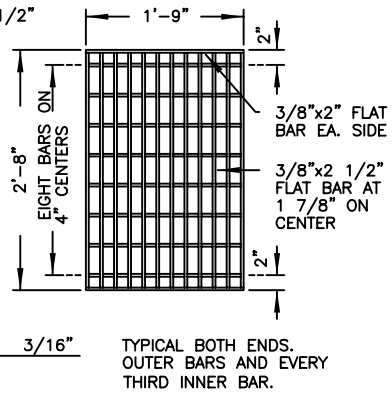
**City of
McMinnville**

DETAIL FOR
TRENCH BACKFILL
PRIVATE PROPERTY

DATE:
MAY 2025

DRAWING NO.
9B

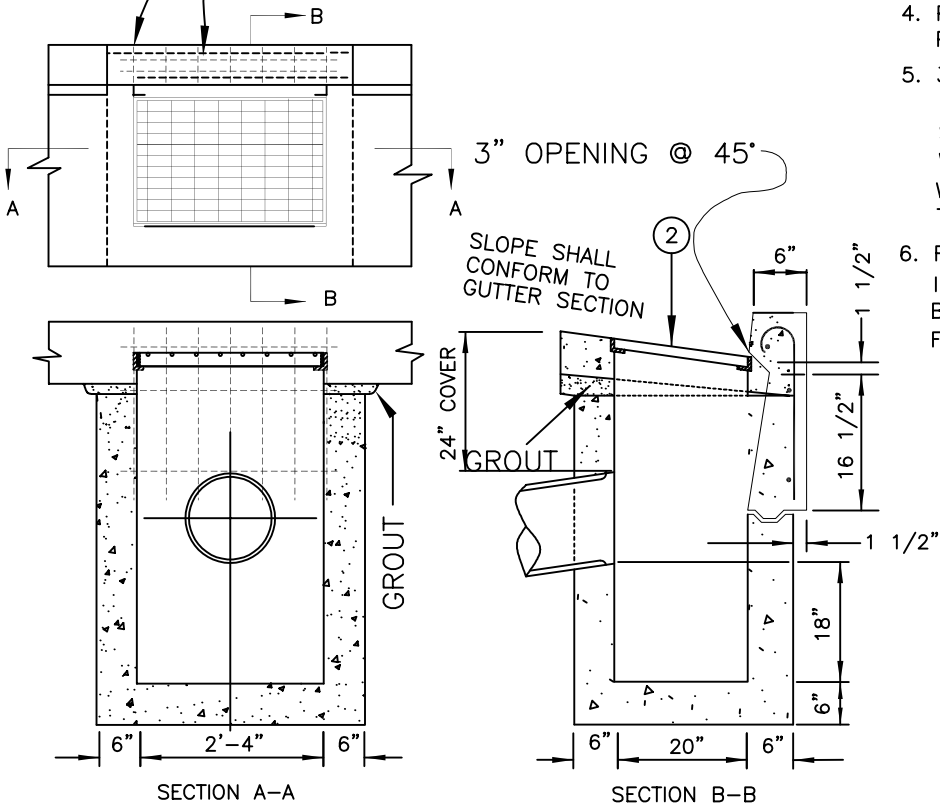
GRATE FRAME

GRATE

NOTES:

1. PRECAST BASE WALLS MAY BE A MINIMUM OF 4" THICK.
2. CONCRETE SHALL BE CLASS 3000.
3. APP. CAST IRON FRAMES & GRATES MAY BE ACCEPTED.
4. POURED IN PLACE OR APPROVED PRECAST MAY BE USED.
5. 3/8" CROSS BARS SHALL BE FLUSH WITH THE GRATE SURFACE AND MAY BE FILLET WELDED, RESISTANCE WELDED OR ELECTROFORGED TO BEARING BARS.
6. FOR OVERSIZE CATCH BASIN (G-2), INSIDE DIMENSIONS MUST BE 2'-4" x 2'-4"; GRATE AND FRAME WILL ADJUST ACCORDINGLY.

USE SEVEN #3 HOOK BARS
@ 6" C.C. VERT. & THREE #5
BARS HORIZ. IN CURB AS SHOWN.



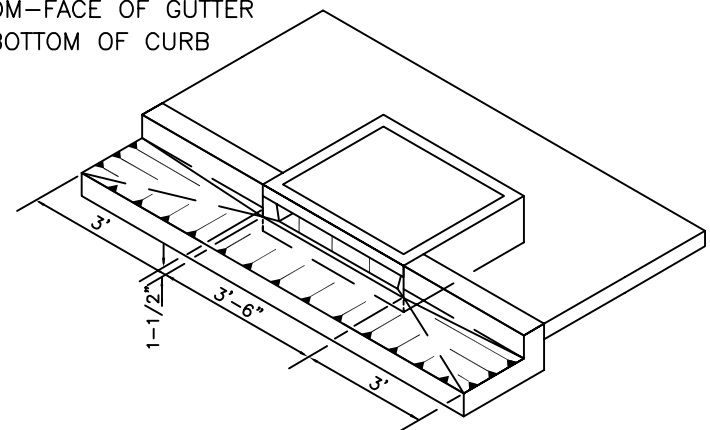
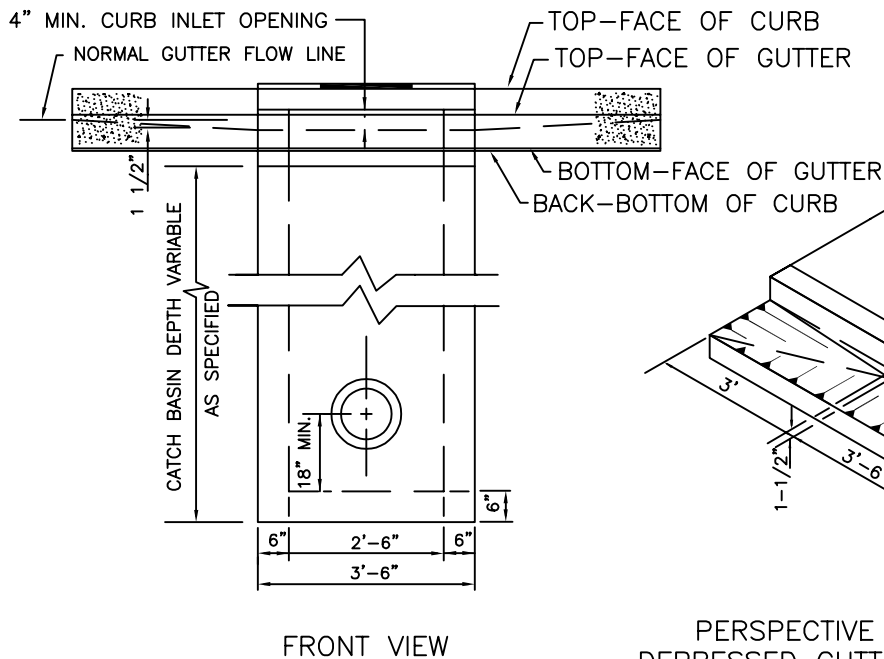
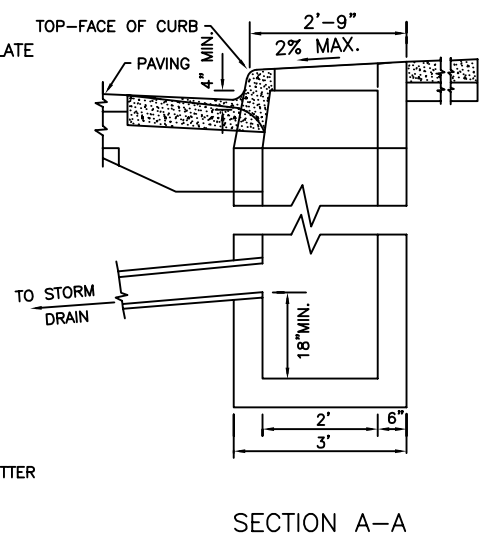
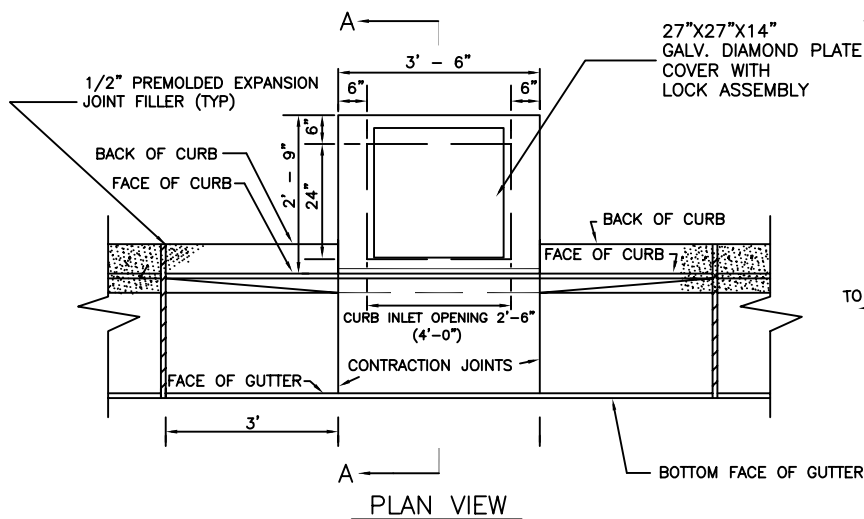
City of McMinnville

DETAIL FOR
COMBINATION GUTTER
AND CURB INLET
CATCH BASIN

DRAWN BY JG

DATE: NOVEMBER 2025

DRAWING NO. 11



NOTES:

- 1) ALL FABRICATED METAL PARTS SHALL BE HOT-DIPPED GALVANIZED AFTER FABRICATION.
- 2) CONCRETE SHALL HAVE A 28 DAY ULTIMATE COMPRESSIVE STRENGTH OF 3300 PSI.
- 3) FOR STEEP GRADES USE STD. PRECAST INLET WITH 4' OPENING OR TWO 2'-6" OPENING INLETS.
- 4) PRECAST CURB INLET IS PATTERNED AFTER WALT'S CONCRETE, SPRINGFIELD, OR. CONCRETE CURB INLET PAT. NO. 4000953.

**City of
McMinnville**

DETAIL FOR GUTTER INLET

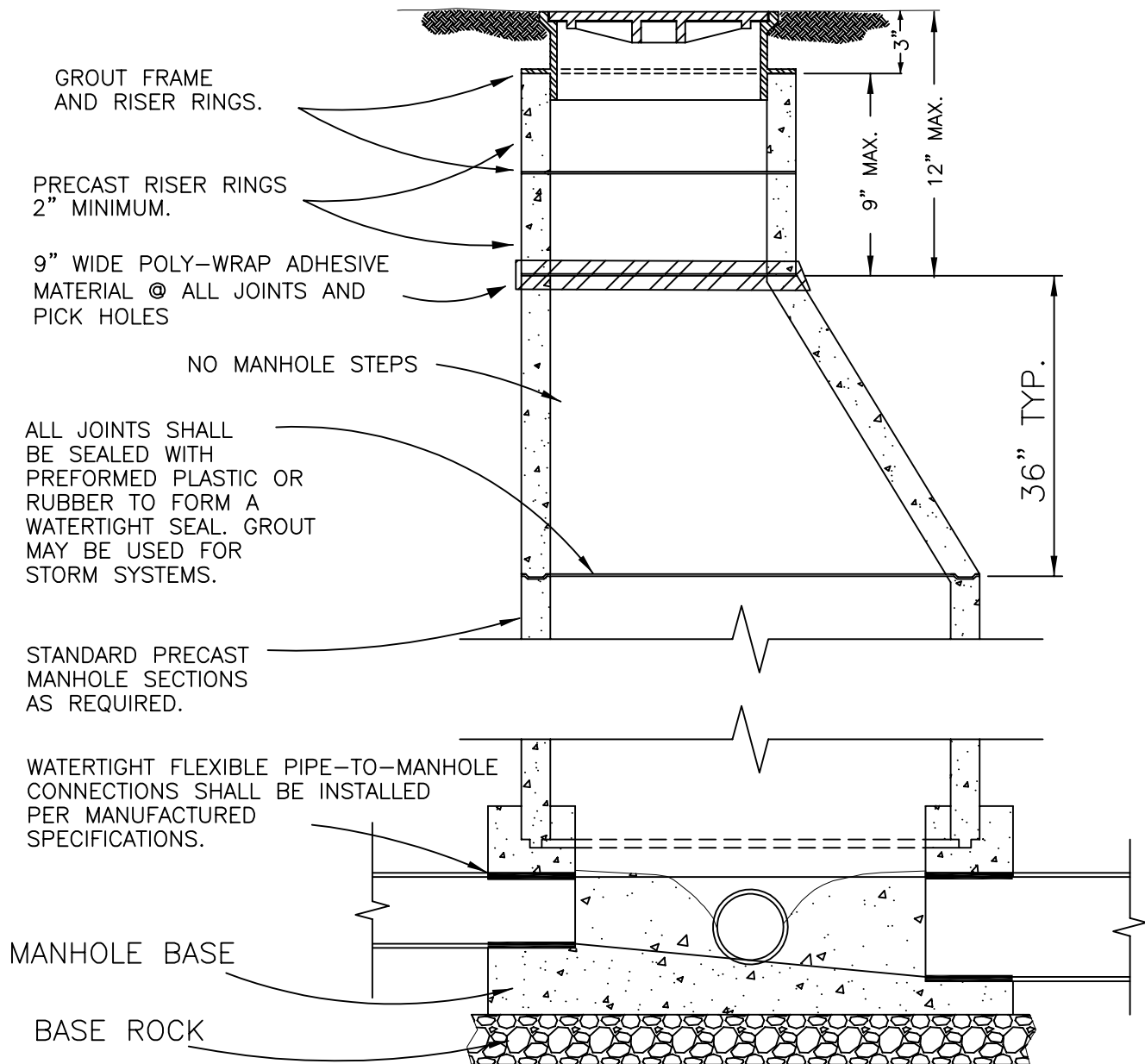
DATE:

MAY 2025

DRAWING NO.

12

24" X 6" FRAME (OLYMPIC MH26)
COVER PATTERN: SANITARY 2-HOLE
(OLYMPIC MH26S)
COVER PATTERN: STORM 16-HOLE
(OLYMPIC MH26P)



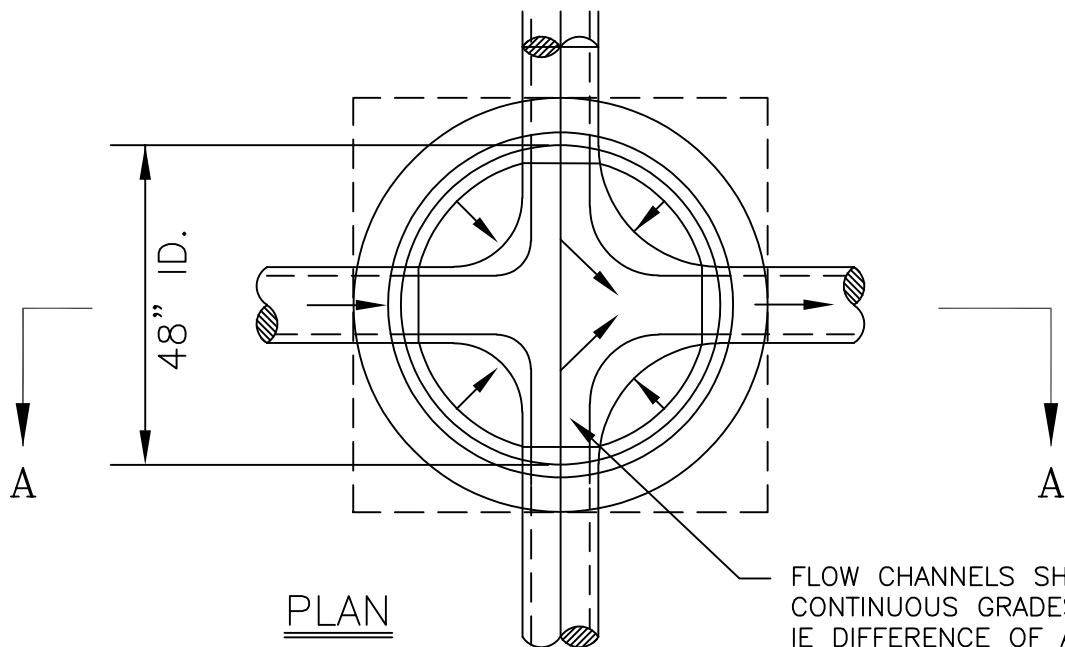
1. STANDARD PRECAST MANHOLE SECTION DIAMETER SHALL BE 48" MINIMUM AND MEET OR EXCEED ASTM C 478.

City of McMinnville

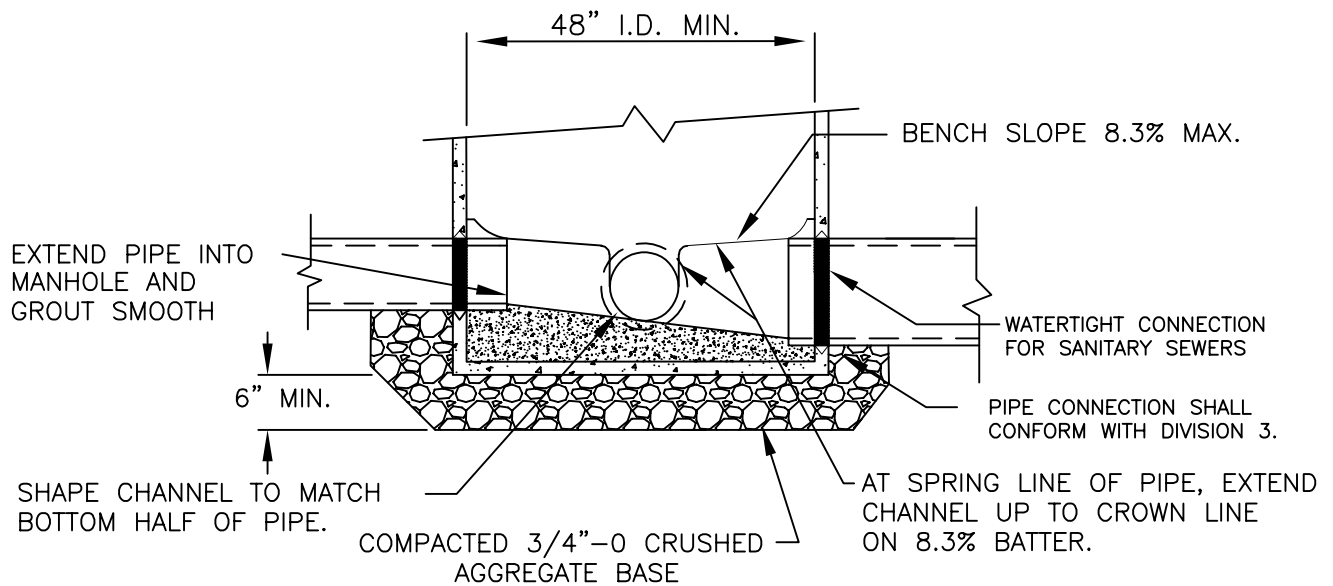
DETAIL FOR STANDARD MANHOLE

DATE: MAY2025

DRAWING NO. 13



FLOW CHANNELS SHALL BE CONTINUOUS GRADES WITH PIPE IE DIFFERENCE OF AT LEAST 0.2' FROM INLET(S) TO OUTLET.



NOTES:

- 1) CONCRETE SHALL BE 3000 PSI MIN.
- 2) CHANNELS SHALL BE CONSTRUCTED TO PROVIDE SMOOTH SLOPES AND RADII TO OUTLET PIPE.
- 3) ALL PIPE CONNECTIONS SHALL BE WITH FLEXIBLE BOOTS.
- 4) BASES ARE TO BE PRECAST.

**City of
McMinnville**

DETAIL FOR
STANDARD MANHOLE
BASE SECTION

DATE:

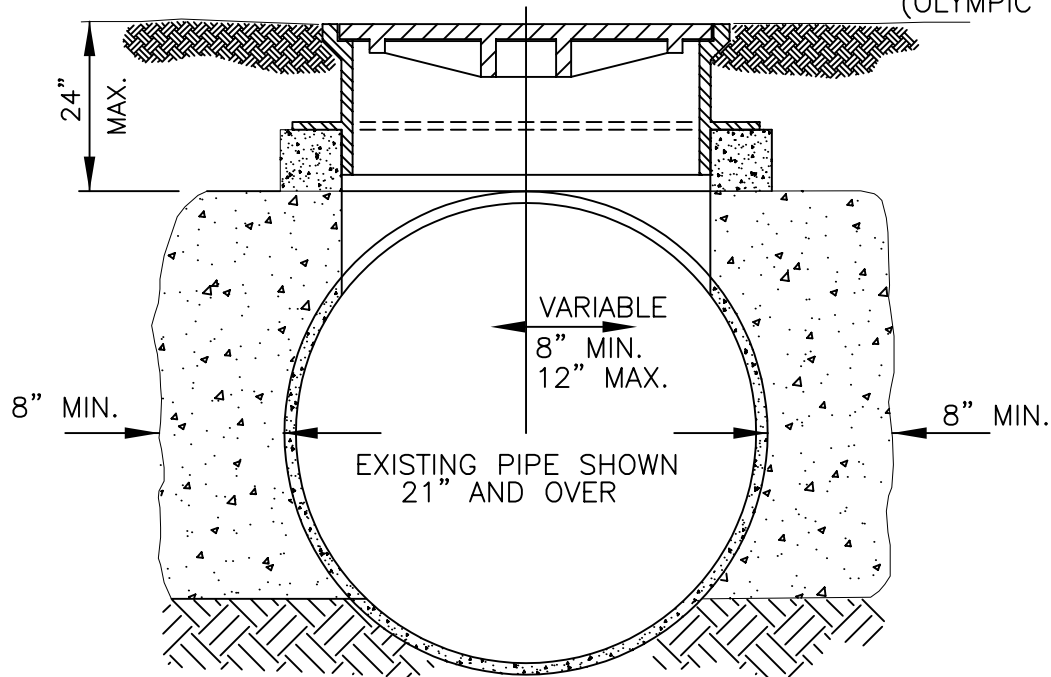
MAY 2025

DRAWING NO.

14

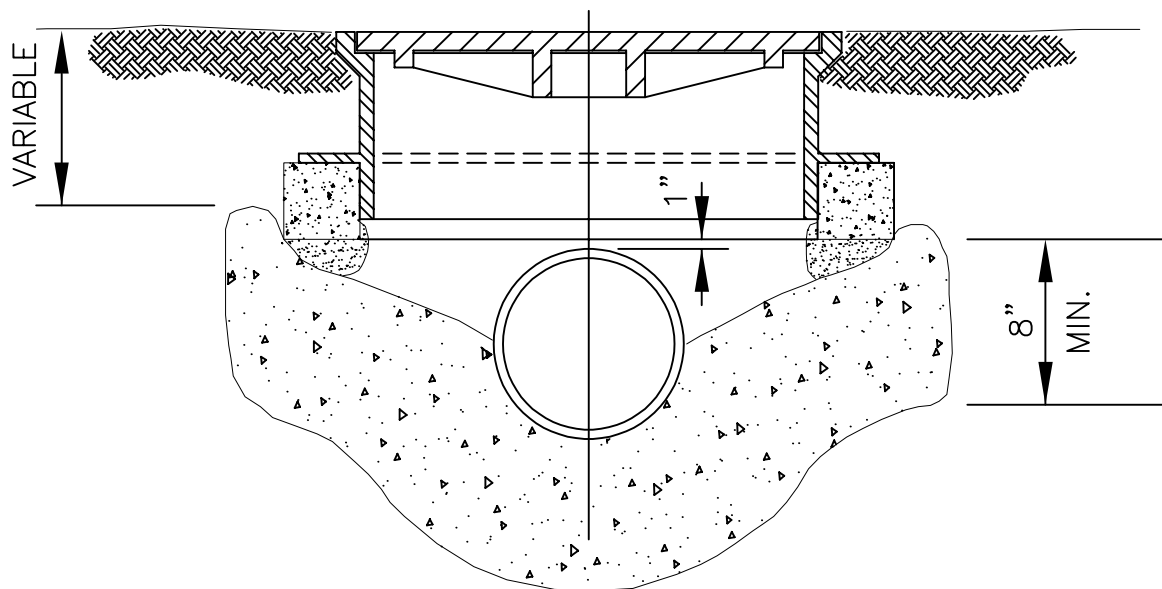
OLYMPIC FOUNDRY OR APPROVED EQUAL

24" X 6" FRAME (OLYMPIC MH26)
COVER PATTERN: SANITARY 2-HOLE
(OLYMPIC MH26S)
COVER PATTERN: STORM 16-HOLE
(OLYMPIC MH26P)



LOW PROFILE MANHOLE

BASE TO EXTEND UNDER PIPE
WITH 8" MIN. THICKNESS



SHALLOW MANHOLE

**City of
McMinnville**

DETAIL FOR
STANDARD LOW PROFILE
AND SHALLOW MANHOLE

DATE:
MAY 2025

DRAWING NO. 15

CLEANOUT
(PIPE SIZE)

6"
8"

SLEEVE SIZE

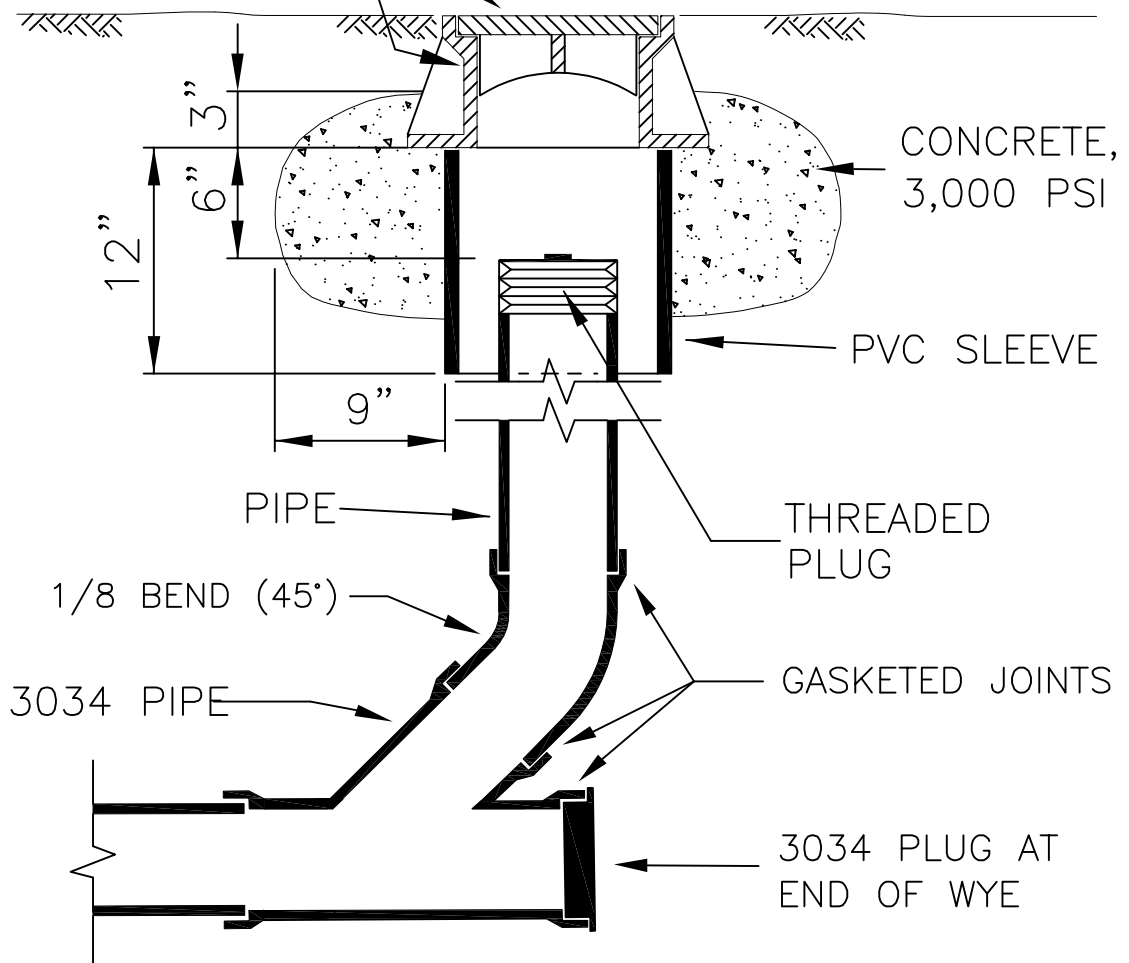
8" MIN.
12" MIN.

OLYMPIC FOUNDRY, INC.
(OR SIMILAR APPROVED)

LOCKING CLEANOUT
CASTING & COVER
M1007 D/T

CLEANOUT CASTING & LID

GROUND ELEVATION



**City of
McMinnville**

DETAIL FOR
STANDARD SANITARY
MAINLINE CLEANOUT

DATE:

MAY 2025

DRAWING NO.

18

CLEANOUT
(PIPE SIZE)

SLEEVE SIZE

4"

8" MIN.

6"

8" MIN.

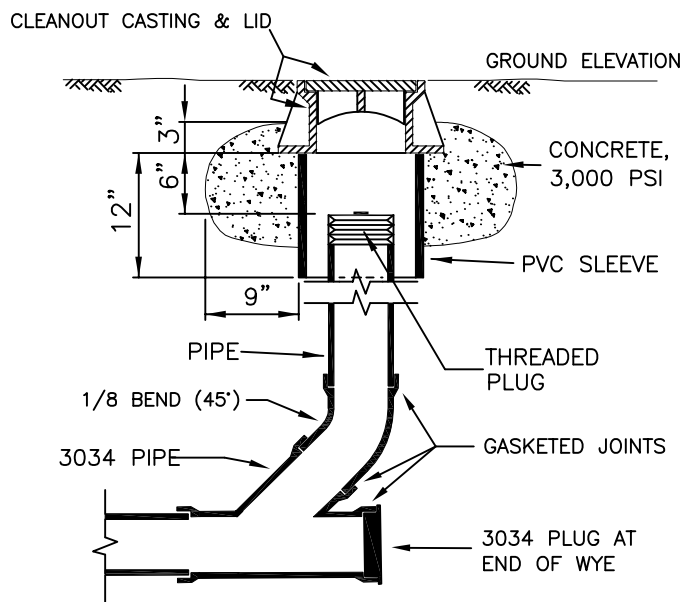
8"

12" MIN.

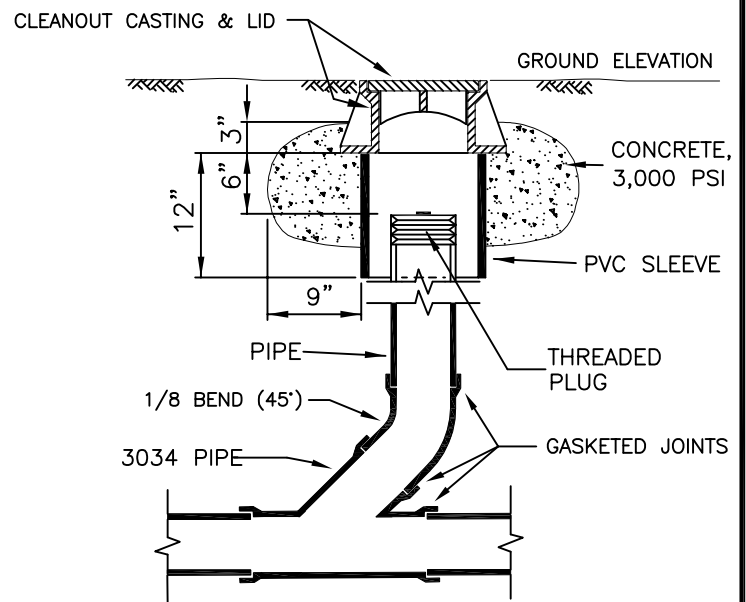
OLYMPIC FOUNDRY, INC.
(OR SIMILAR APPROVED)

LOCKING CLEANOUT
CASTING & COVER
M1007 D/T

END OF LINE CLEANOUT



IN LINE CLEANOUT



**City of
McMinnville**

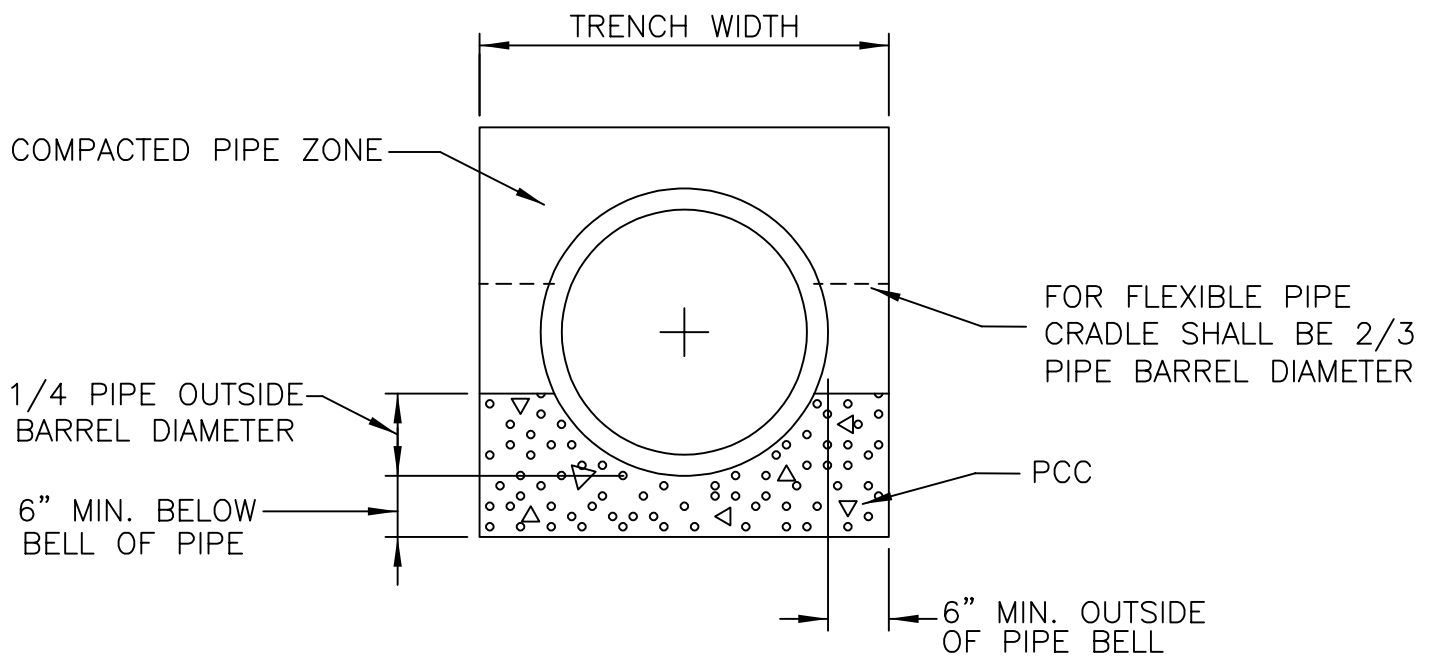
DETAIL FOR
STANDARD SANITARY
CLEANOUT

DATE:

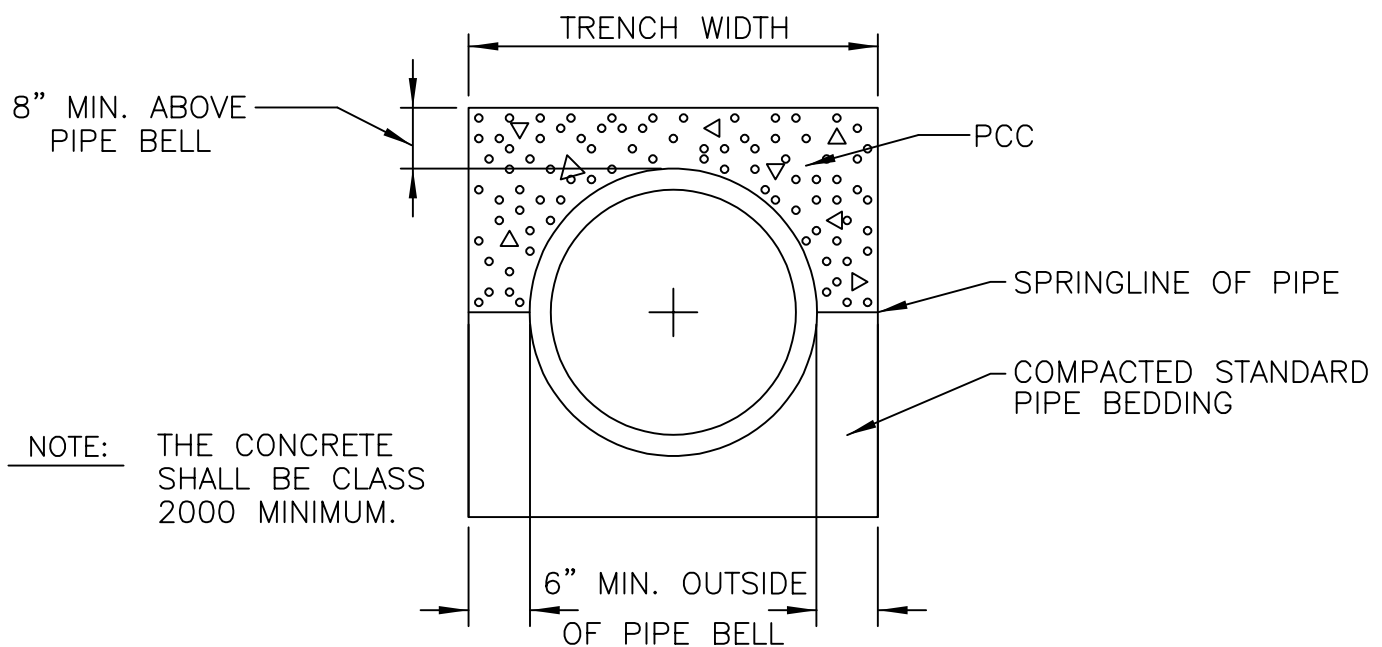
MAY 2025

DRAWING NO.

18B



ENCASEMENT DETAIL



CAP DETAIL

**City of
McMinnville**

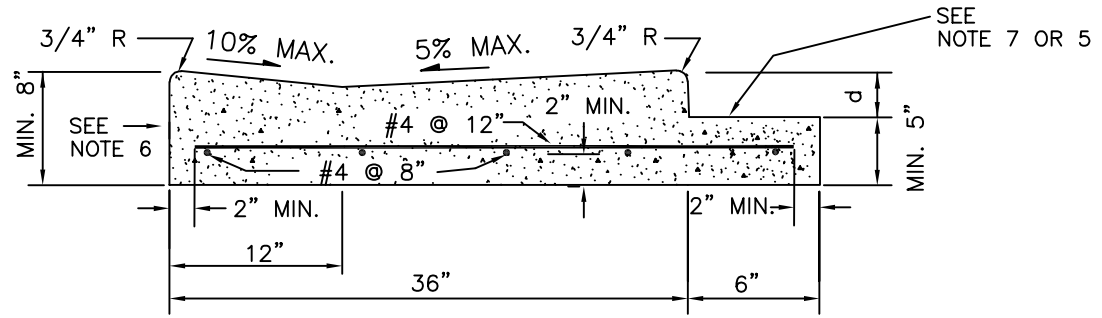
DETAIL FOR
CONCRETE CRADLE
AND CAP DETAILS

DATE:

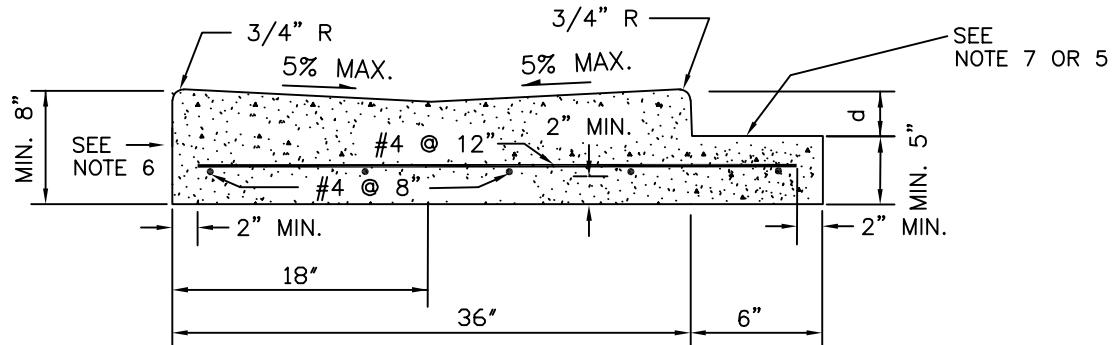
MAY 2025

DRAWING NO.

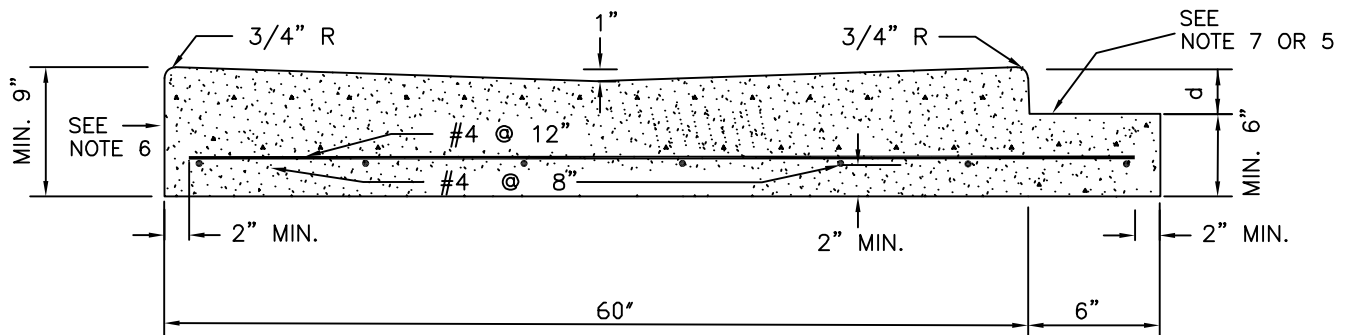
19



CONCRETE – NON-SYMMETRICAL "V" GUTTER



CONCRETE – SYMMETRICAL "V" TYPE GUTTER



WIDE VALLEY GUTTER

NOTES:

1. d = THICKNESS OF ASPHALT PAVING.
2. THE CONCRETE SHALL BE CLASS 3300.
3. THE TOTAL WIDTH OF THE NON-SYMMETRICAL "V" GUTTER MAY BE REDUCED TO 30" WHEN CONSTRUCTION WITH A CURB-EXTRUSION MACHINE.
4. CONSTRUCT 6" BENCH MONOLITHICALLY WITH VALLEY GUTTER TO EXTEND UNDER PAVING FOR PAVEMENT SUPPORT.
5. WHEN BENCH IS NOT REQUIRED, CONSTRUCT 1" BATTER ON VERTICAL FACE.
6. PLACE PREMOLDED FILLER AGAINST VERTICAL FACE WHERE VALLEY GUTTER ABUTS CONCRETE.
7. CONSTRUCT 6" x d DEPRESSED BENCH WHERE VALLEY GUTTER ABUTS ASPHALT PAVEMENT.

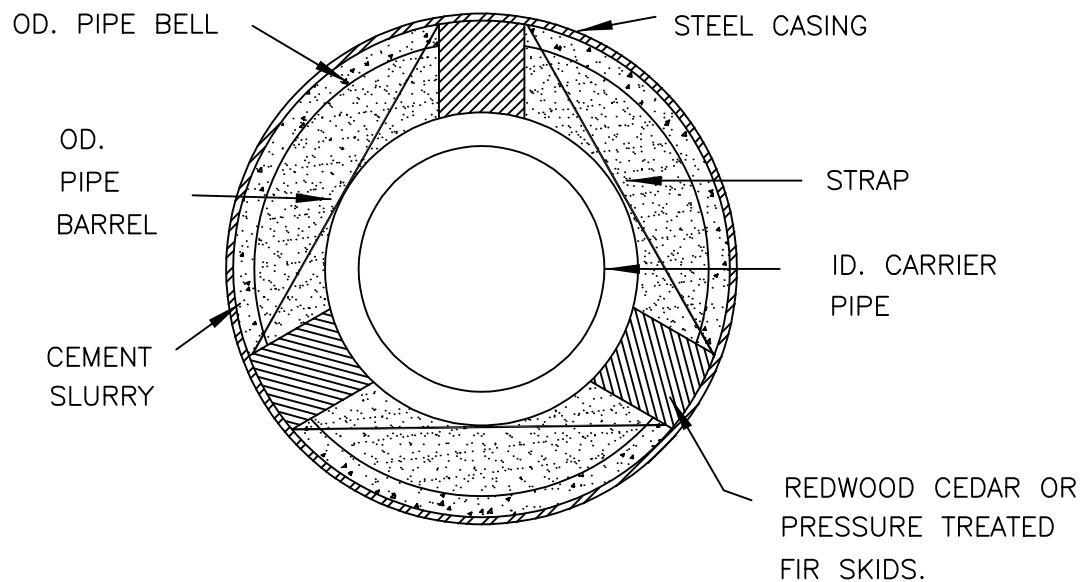
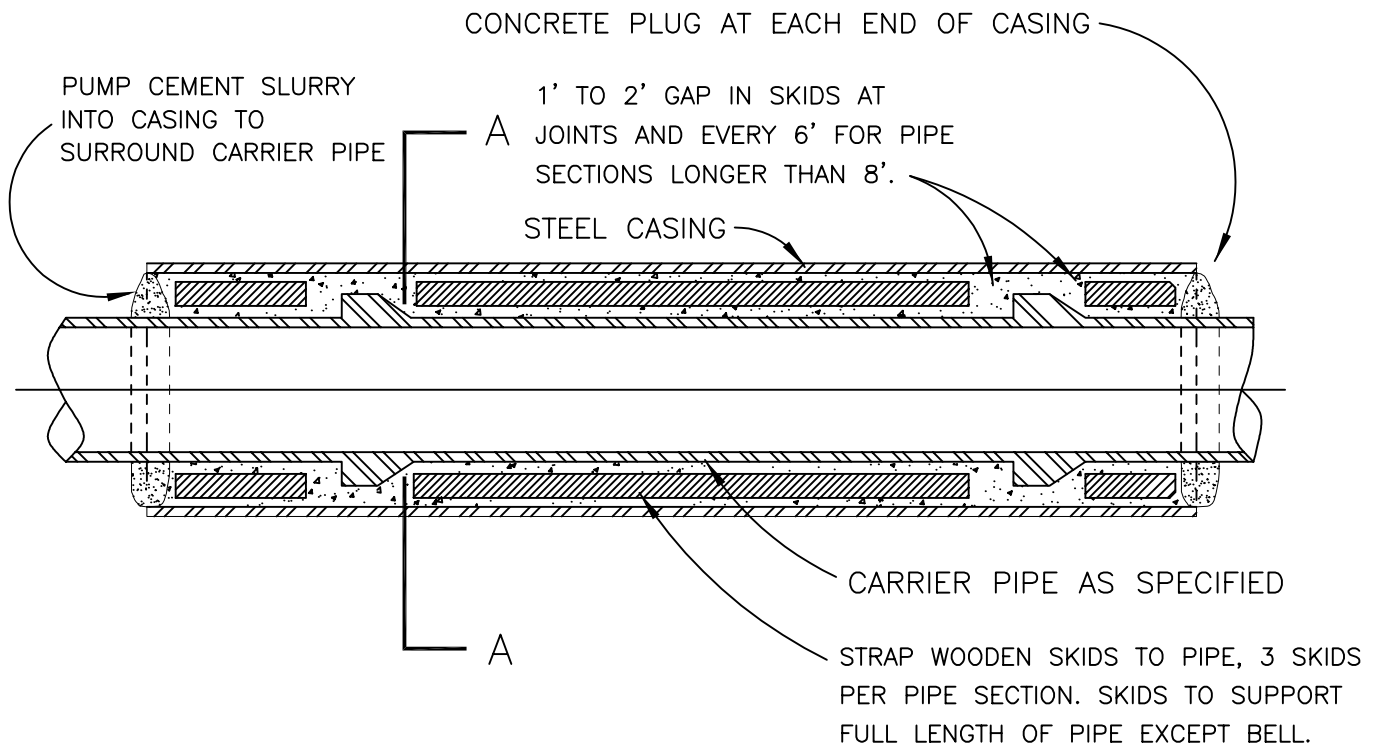
**City of
McMinnville**

DETAIL FOR
CONCRETE
VALLEY GUTTER

DRAWN BY
JG

DATE:
JANUARY 2026

DRAWING NO.
20



SECTION A-A

NOTE:
PLUG ENDS OF CASING WITH CONCRETE.

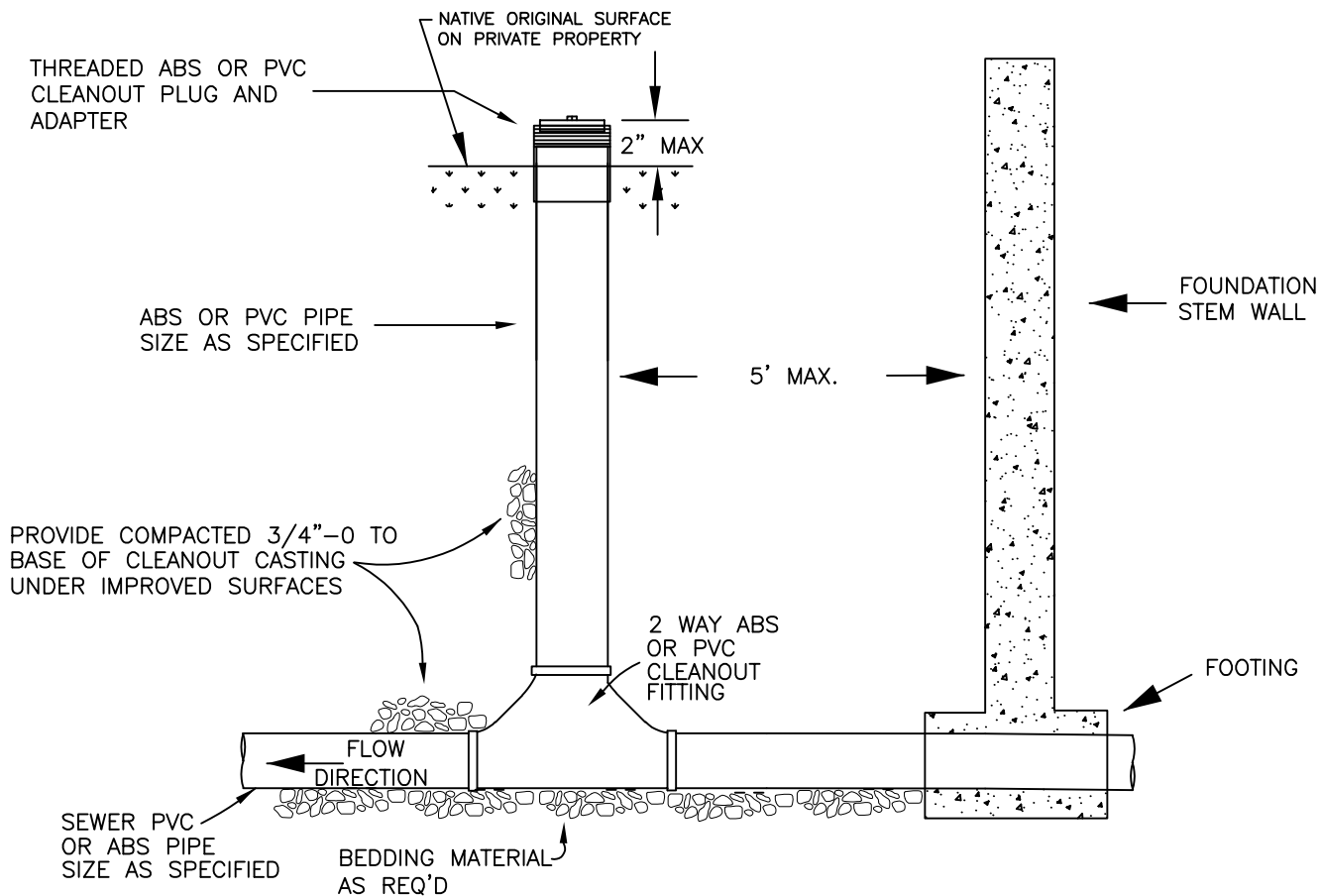
**City of
McMinnville**

DETAIL FOR
BORE CASING DETAIL

DATE:
MAY 2025

DRAWING NO. 21

INSTALL 14 GAUGE GREEN INSULATED
TRACER WIRE FROM CITY CONNECTION
ALONG PIPE AND UP TO CLEANOUT CAP.



**City of
McMinnville**

DETAIL FOR
BUILDING CLEANOUT

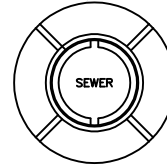
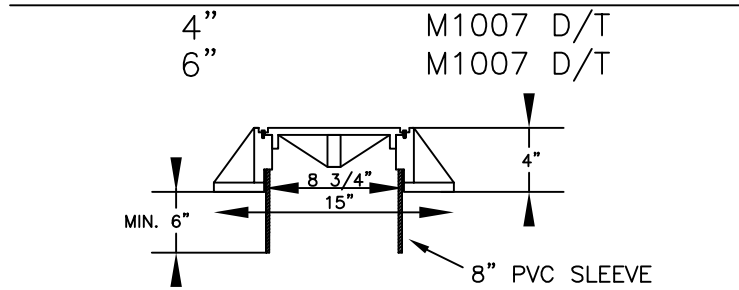
DATE:
MAY 2025

DRAWING NO.
22

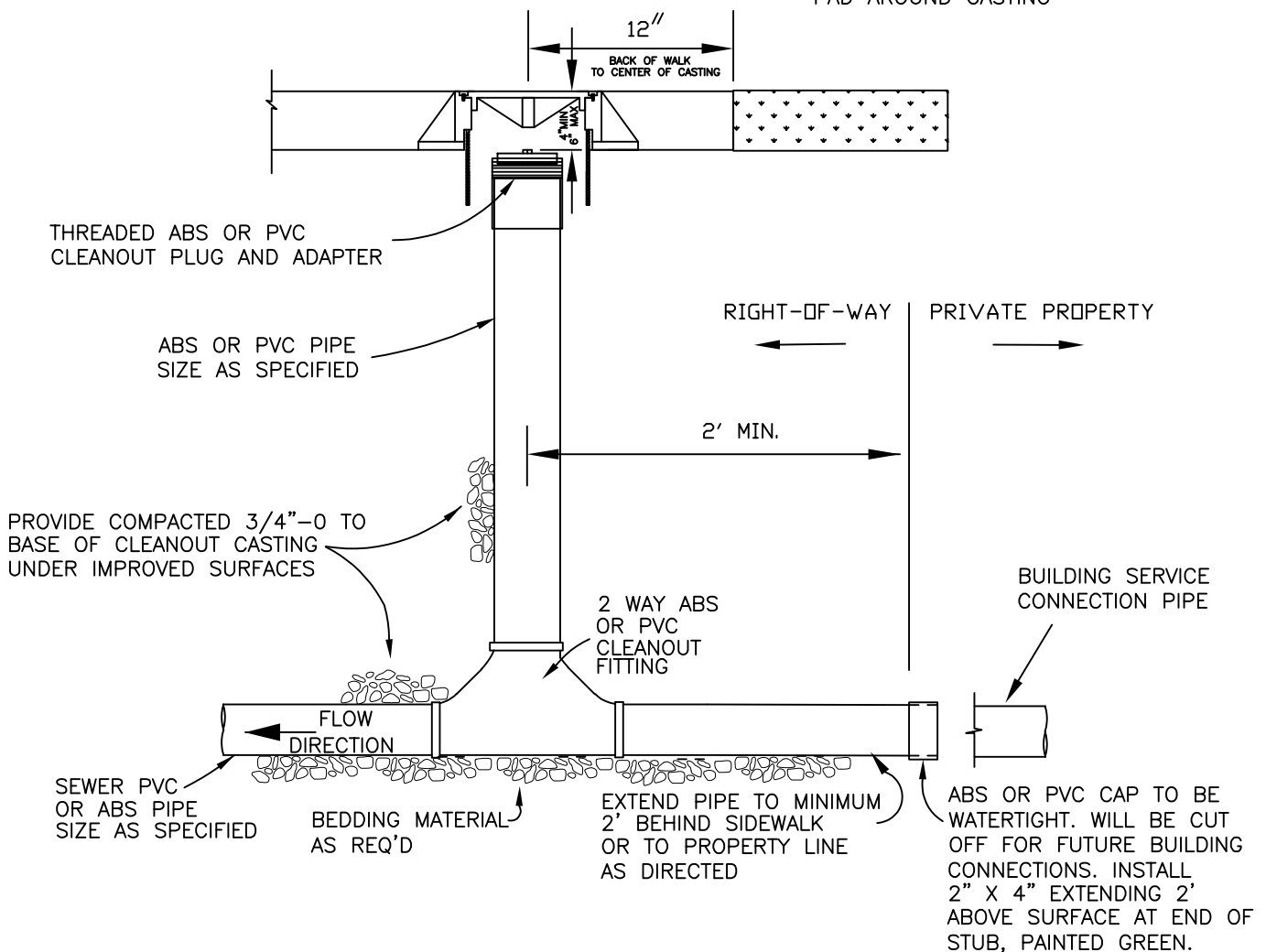
CLEANOUT
(PIPE SIZE)

OLYMPIC FOUNDRY, INC.
OR EQUAL CASTING
LOCKING CLEANOUT
FRAME & COVER

APPROVED CAST IRON FRAME
AND COVER SHALL BE LABELED
"SEWER" OR "CLEANOUT"



IF NO SIDEWALK IS PRESENT
INSTALL CLEANOUT AT CITY DIRECTION
AND POUR 18" X 18" CONCRETE
PAD AROUND CASTING



**City of
McMinnville**

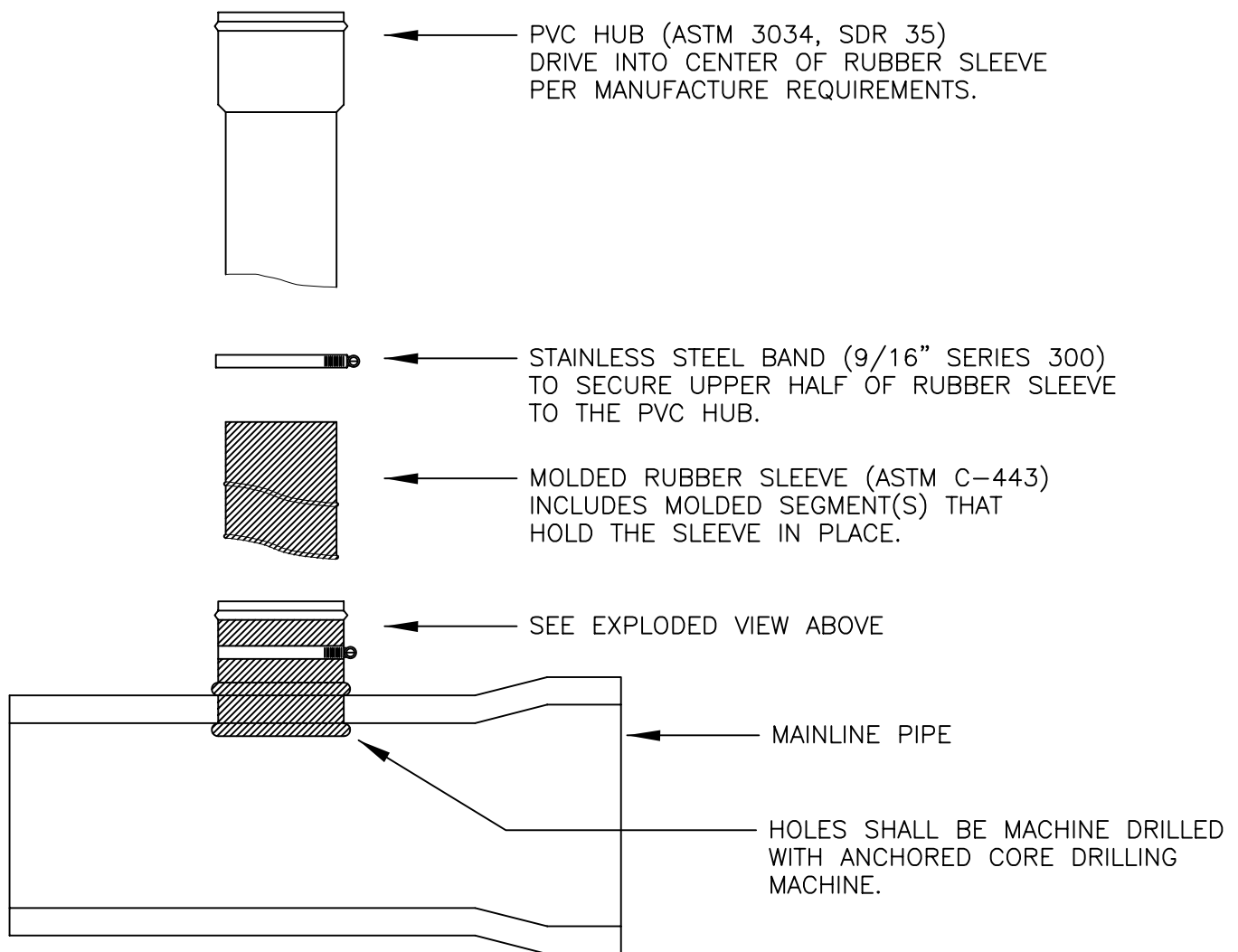
DETAIL FOR
PROPERTY LINE CLEANOUT

DATE:

MAY 2025

DRAWING NO.

22a



NOTES:

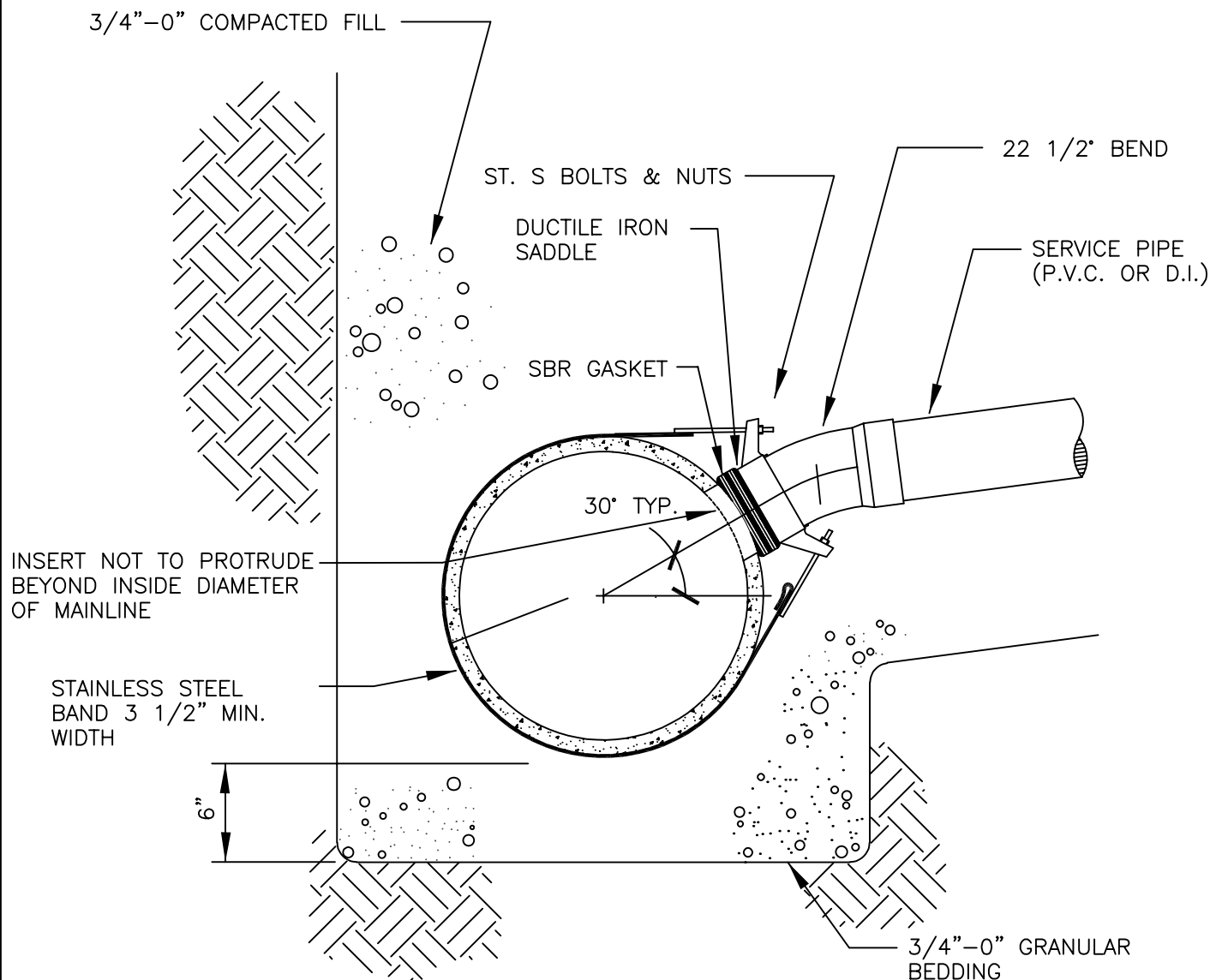
1. INSERTA-TEES ALLOWED ON EXISTING APPROVED SEWER MAINS 12" IN DIA. OR LARGER. SERVICE SADDLES SHALL BE USED ON EXISTING 10" OR SMALLER PIPES (DETAIL 25). MANUFACTURED TEE FITTINGS SHALL BE USED ON ALL NEWLY CONSTRUCTED MAINLINES.
2. THE TAP SHALL NOT BE MADE EXCEPT IN THE PRESENCE OF A CITY INSPECTOR; NOR SHALL ANY CONNECTION BE MADE WITHOUT CITY APPROVAL.
3. CENTERLINE OF TAP SHALL BE ABOVE SPRINGLINE.

**City of
McMinnville**

DETAIL FOR
INSERTA-TEE CONNECTION
TO EXISTING SEWER

DATE:
MAY 2025

DRAWING NO.
24



NOTES:

1. SERVICE SADDLES ALLOWED ON EXISTING SEWER MAINS ONLY. MANUFACTURED TEE FITTINGS SHALL BE USED ON ALL NEW MAINLINES.
2. THE TAP SHALL NOT BE MADE EXCEPT IN THE PRESENCE OF A CITY INSPECTOR; NOR SHALL ANY CONNECTION BE MADE WITHOUT CITY APPROVAL.
3. CENTERLINE OF TAP SHALL BE ABOVE SPRINGLINE.
4. HOLE IN MAIN SHALL BE CORE DRILLED
5. USE ROMAC CB SEWER SADDLE.

**City of
McMinnville**

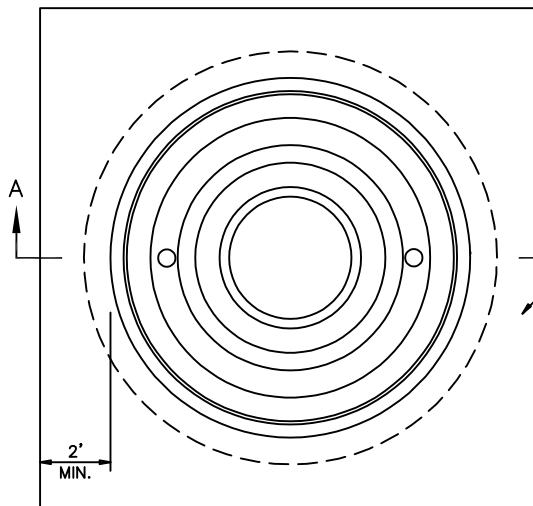
DETAIL FOR
SERVICE SADDLE CONNECTION
TO EXISTING SEWER

DATE:

MAY 2025

DRAWING NO.

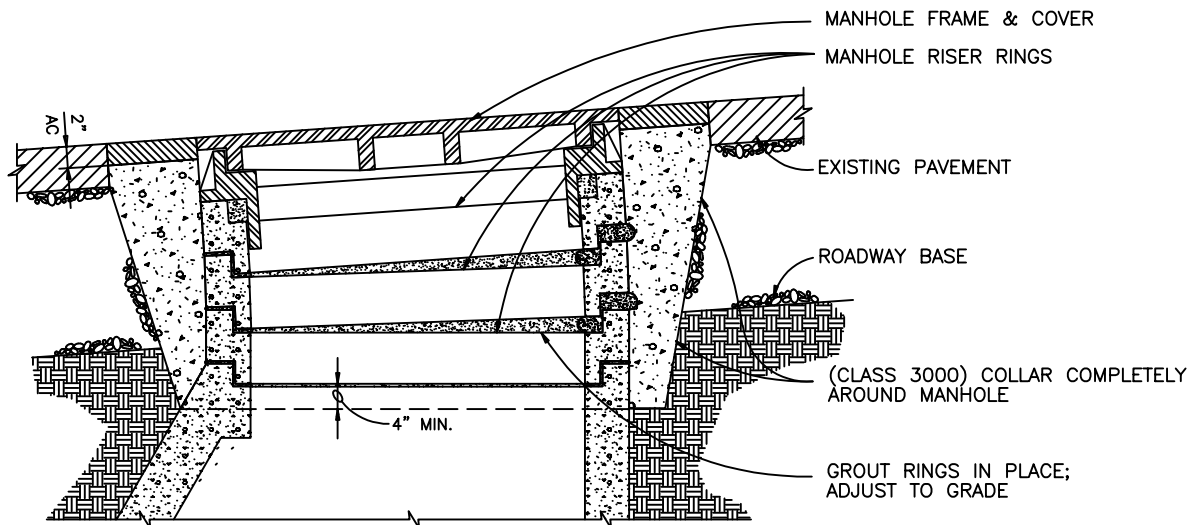
25



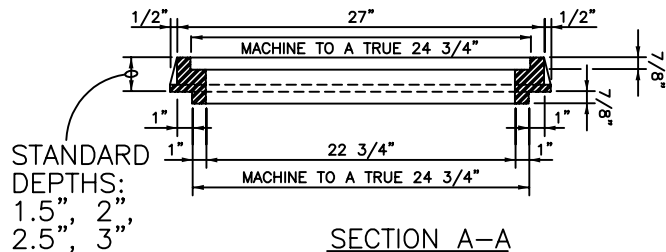
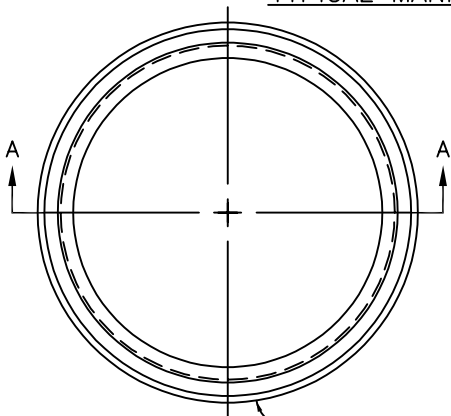
SAW CUT SQUARE AND REMOVE PAVEMENT
2-FOOT MIN. LARGER THAN MANHOLE
FRAME DIMENSION

REPLACE WITH 6-INCH THICK AC. PAVING

APPLY TACK COAT TO EDGES OF EXISTING
PAVEMENT BEFORE INSTALLING PATCH.
FINISH JOINT WITH ASPHALTIC SEAL
AND SAND.



TYPICAL MANHOLE GRADE ADJUSTMENT IN STREET



STANDARD
DEPTHS:
1.5", 2",
2.5", 3"

SECTION A-A

MANHOLE ADJUSTMENT RINGS
FOR RESURFACING

NOTES:

1. CAST IRON ADJUSTMENT RINGS ALLOWED ONLY WITH OVERLAYS AND NOT ON NEW MANHOLES. MAX. 1 ADJUSTMENT RING PER MANHOLE.

**City of
McMinnville**

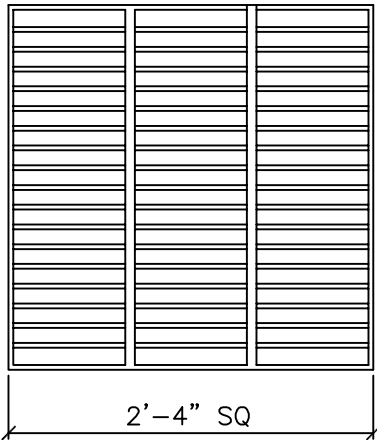
DETAIL FOR
MANHOLE RIM
ADJUSTMENT

DATE:

MAY 2025

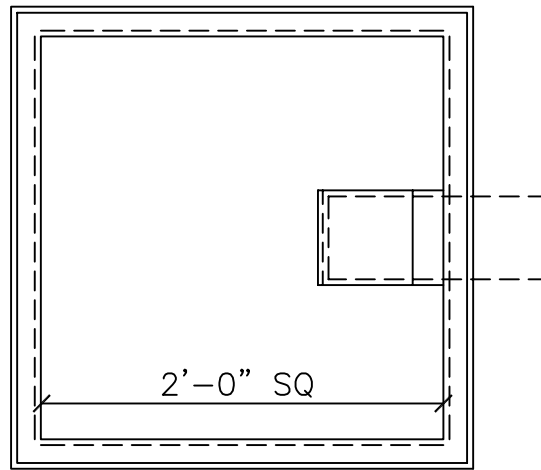
DRAWING NO.

26

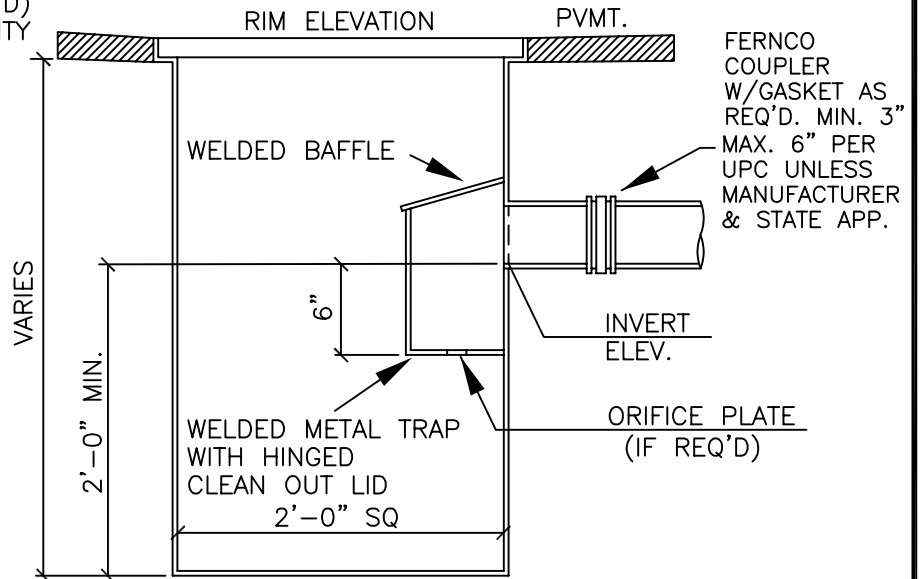


GRATE: WELDED STEEL DROP-IN
BAR GRATE (ASTM A36)
END BARS: 1/2" x 2"
CROSS BARS: 1/2" x 2" @ 2" O.C.
BIKE STRAPS: 1/8" x 1" (2 REQ'D)
16,000 LB UNIFORM LOAD CAPACITY

GRATE DETAIL



PLAN VIEW



NOTES:

- 1) SEE CONSTRUCTION DWGS FOR PIPE SIZE, LOCATION AND INVERT ELEVATION.
- 2) FOR JUNCTION BOX, REPLACE GRATE WITH 3/4" STEEL PLATE. DRILL ONE, 1" LIFTING HOLE, CENTERED IN ONE END OF THE PLATE. WELD SHIMS TO RIM AS REQUIRED TO RAISE PLATE TO RIM ELEVATION.
- 3) OUTLET: SIZE AS REQ'D FOR INDICATED PIPE SIZE.

CONSTRUCT BASIN OF WELDED
1/4" STEEL. COAT ALL SURFACES
WITH ASPHALTIC PAINT

**City of
McMinnville**

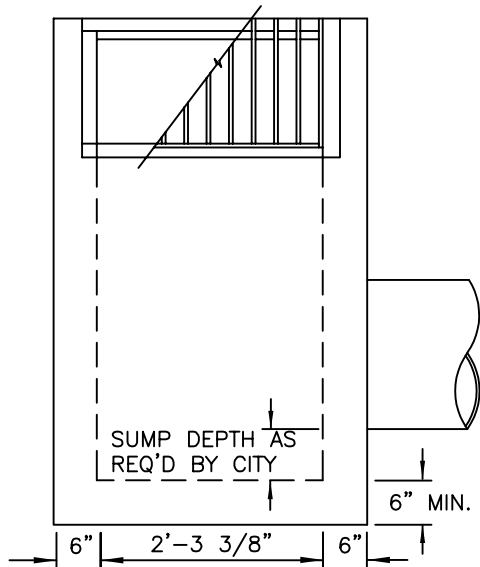
DETAIL FOR
PARKING LOT CATCH BASIN
(LYNCH STYLE)

DATE:

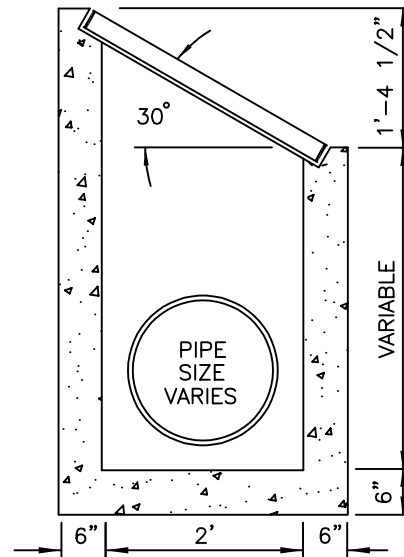
MAY 2025

DRAWING NO.

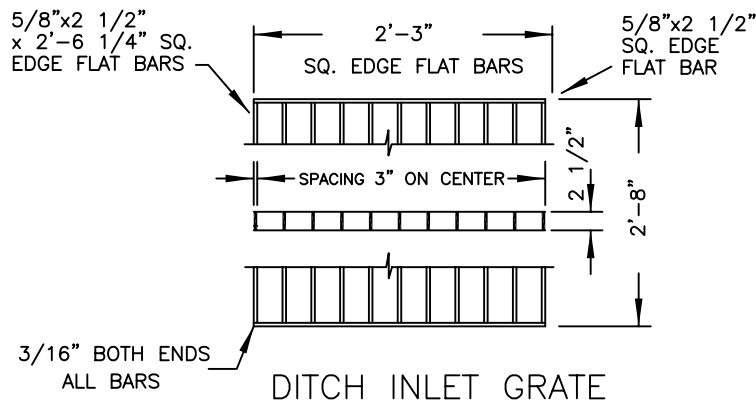
27



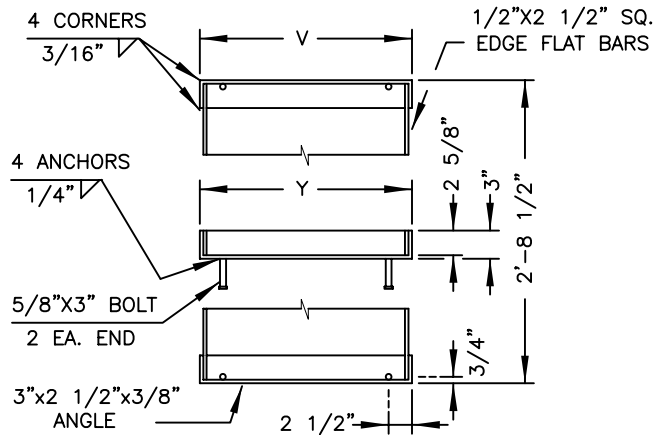
SECTION B-B



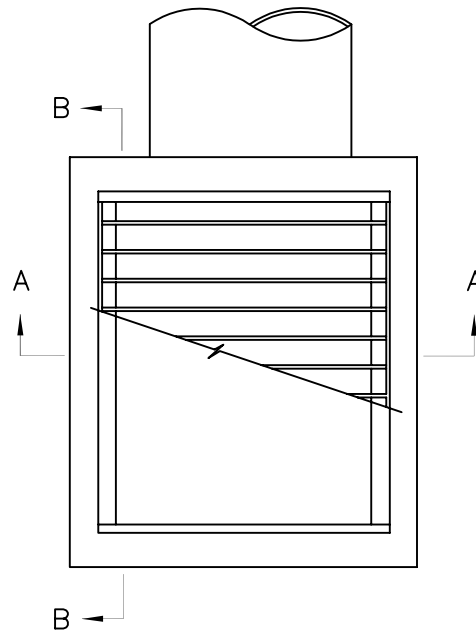
SECTION A-A



DITCH INLET GRATE



DITCH INLET FRAME



PLAN

NOTES:

1. CONCRETE SHALL HAVE A 28 DAY ULTIMATE COMPRESSIVE STRENGTH OF 3300 PSI.
2. CATCH BASIN, FRAME, & GRATE SHALL MEET H2O LOADING
3. INSIDE FRAME DIMENSIONS: 2'-3 3/8", 2'-8 1/2".
4. 3/8" CROSS BARS SHALL BE FLUSH WITH THE GRATE SURFACE AND MAY BE FILLET WELDED, RESISTANCE WELDED OR ELECTROFORGED TO BEARING BARS.

INLET TYPE	V	Y	Y ₁	NO. OF BARS	TYPE
D	2'-4 3/4"	2'-3 3/8"	2'-3"	9	1

**City of
McMinnville**

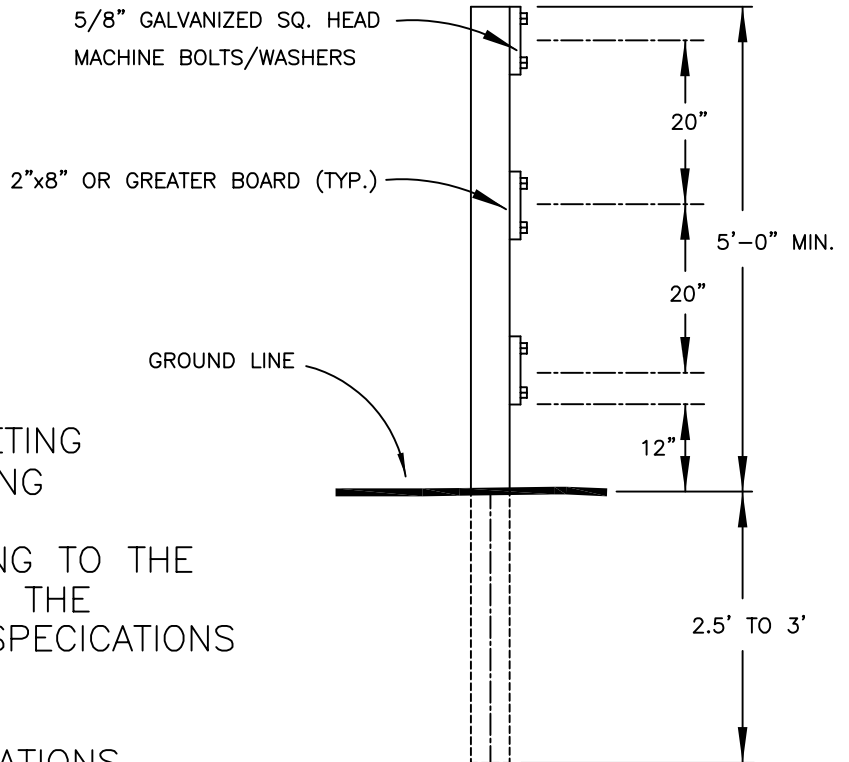
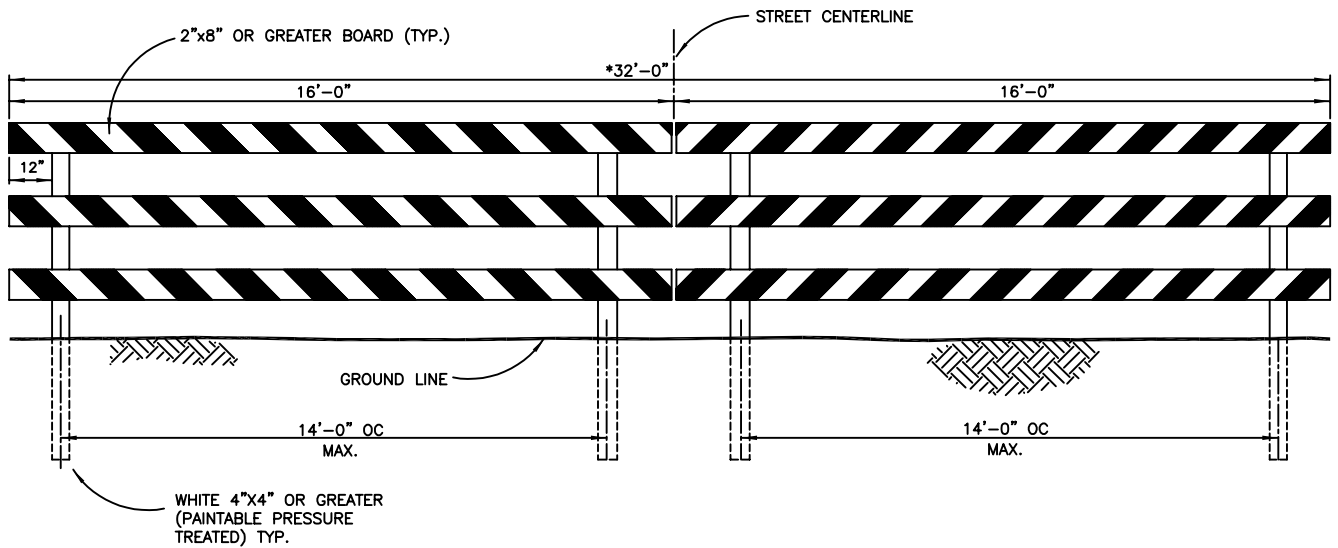
DETAIL FOR
DITCH INLET

DATE:

MAY 2025

DRAWING NO.

28



NOTES:

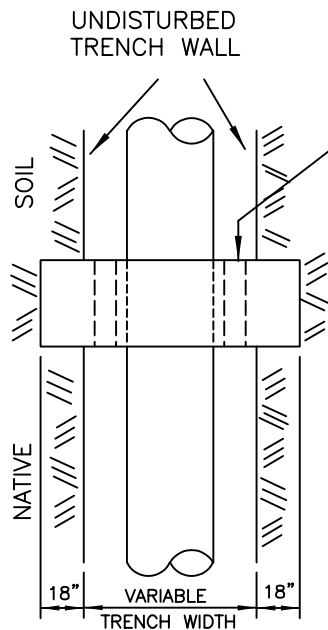
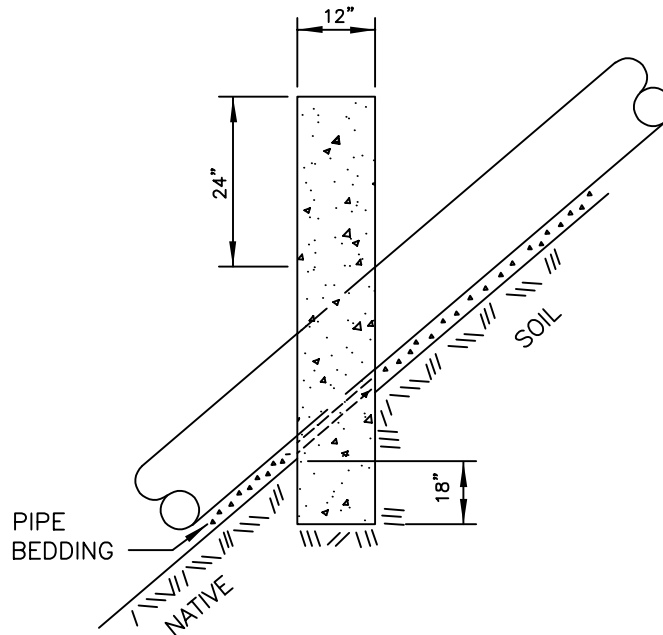
1. REFLECTORIZED SHEETING SHALL BE ENGINEERING GRADE REFLECTIVE SHEETING CONFORMING TO THE CURRENT EDITION OF THE OREGON STANDARD SPECIFICATIONS FOR CONSTRUCTION.
2. * FOR WIDER APPLICATIONS, MULTIPLE SECTIONS AS SHOWN SHALL BE USED.

**City of
McMinnville**

DETAIL FOR
BARRICADE

DATE:
MAY 2025

DRAWING NO. 29



INSTALL 3" WEEP HOLES AT
BOTTOM OF TRENCH WITH 1/4"
GALVANIZED SCREEN OVER
UPSTREAM END.

NOTES:

1. CONCRETE ANCHOR WALLS (CLASS 3000) SHALL BE CONSTRUCTED USING FORMS WHEN SEWERS, STORM DRAINS, AND OTHER PIPELINES ARE CONSTRUCTED WITH SLOPES 20% OR GREATER. REMOVE FORMS PRIOR TO BACKFILLING TRENCH.

2. SPACING OF OF ANCHOR WALLS SHALL BE:	<u>SLOPE</u>	<u>SPACING</u>
	20-34%	35 FEET
	35-50%	25 FEET
	50+ %	15 FEET OR CONCRETE ENCASEMENT

**City of
McMinnville**

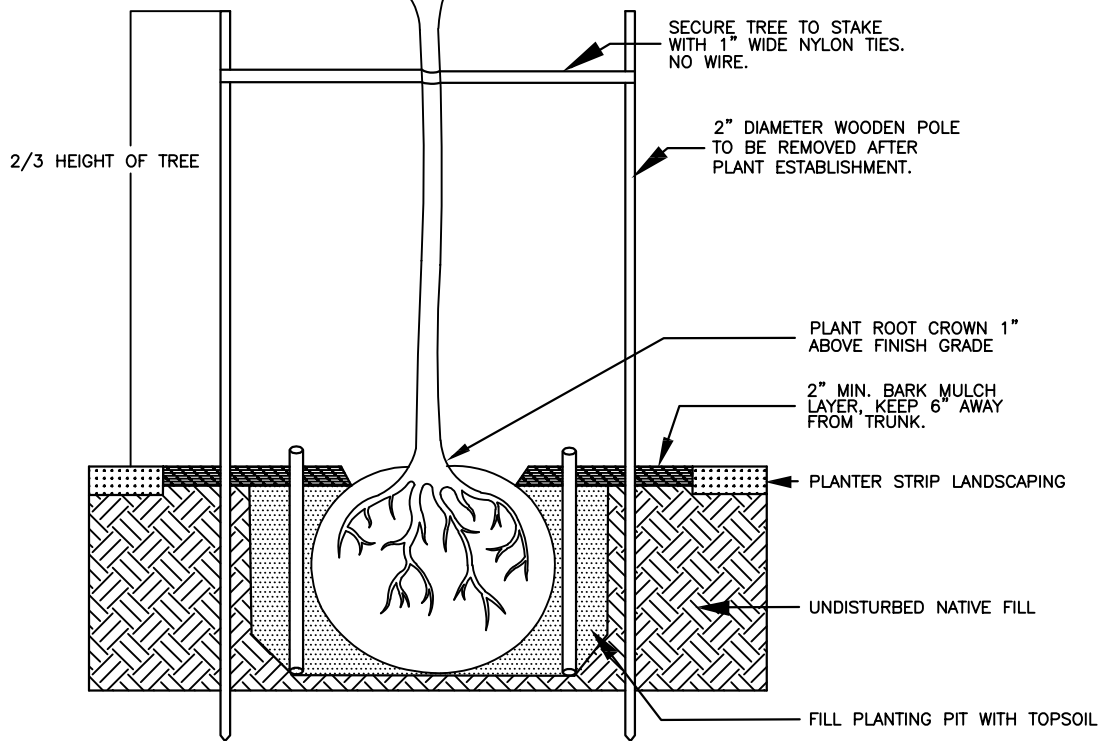
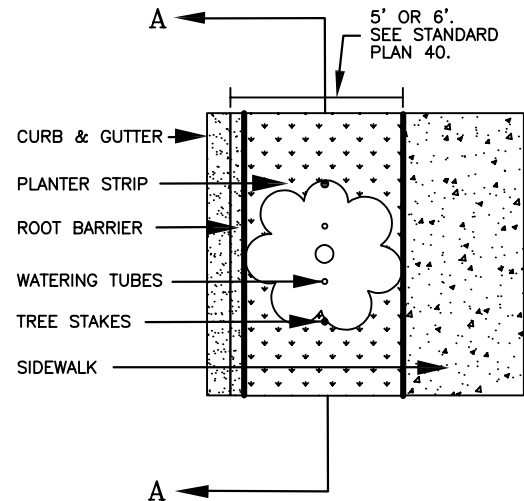
PIPE ANCHOR DETAIL

DATE:

MAY 2025

DRAWING NO.

30



SECTION AA

NOTES:

1. PLANTING PIT 2X ROOTBALL WIDTH AND NO DEEPER THAN ROOTBALL.
2. BACKFILL WITH TOP SOIL.
3. A ROOT CONTROL SYSTEM, BIOBARRIER, DEEPROOT, OR APPROVED EQUAL, SHALL BE INSTALLED ALONG THE BACK EDGE OF THE CURB AND FRONT EDGE OF THE SIDEWALK. THE BARRIER SHALL BE 10' LONG, CENTERED ON THE TREE, BY 18" IN DEPTH FROM FINISH GRADE AND INSTALLED PER MANUFACTURER'S RECOMMENDATIONS.
4. ON BALLED AND BURLAP TREES, CUT & PEEL AWAY WIRE FRAME FROM ROOTBALL, LEAVE BURLAP AND FRAME IN PLANTING HOLE.
5. INSTALL TWO (2) 4" X 36" PERFORATED PLASTIC DEEP WATERING TUBES ON EITHER SIDE OF TREE.

**City of
McMinnville**

MCMINNVILLE PUBLIC WORKS
STREET TREE PLANTING DETAIL –
PLANTER STRIP

NOT TO SCALE

DRAWN BY:

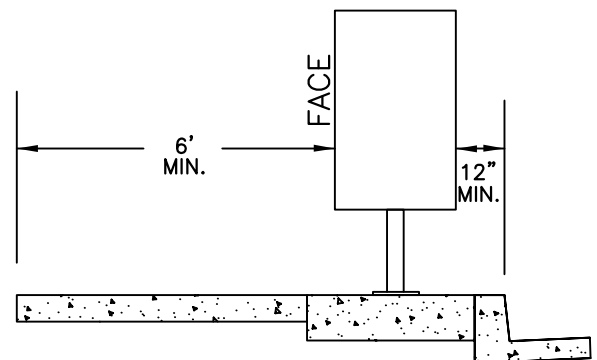
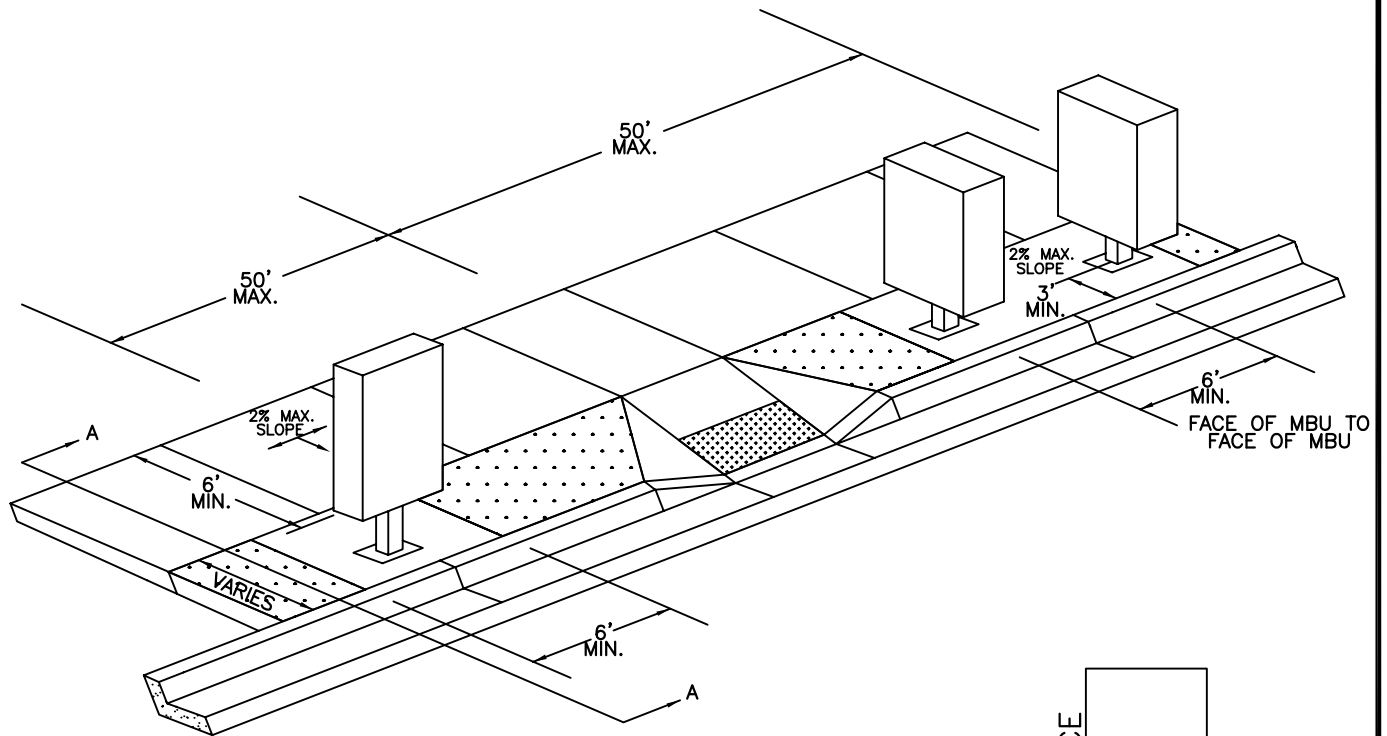
MB

DATE:

AUGUST 2025

DRAWING NO.

34B



SECTION A-A

NOTES:

- 1) CONTACT THE US POSTAL SERVICE FOR LOCATION OF MAILBOX UNITS. LOCATION SUBJECT TO APPROVAL BY THE CITY.
- 2) PROVIDE AN UNOBSTRUCTED ACCESS PAD MEASURING NOT LESS THAN 6' WIDE BY 6' LONG CENTERED ON THE MAILBOX UNIT. ADJACENT SIDEWALKS MAY BE USED IN MEASURING THE AREA OF THE ACCESS PAD.
- 3) WHEN LOCATED WITHIN A PLANTER STRIP, CONCRETE PAD SHALL EXTEND FROM THE BACK OF CURB TO EDGE OF SIDEWALK.
- 4) ALL ACCESS PAD SLOPES SHALL BE DESIGNED AT 1.5% MAX., IN ANY DIRECTION CONSTRUCTION NOT TO EXCEED 2% IN ANY DIRECTION.
- 5) MAILBOX UNITS SHALL BE CONNECTED BY A CONTINUOUS ACCESSIBLE WAY TO A CURB RAMP LOCATED NO GREATER THAN 50' AWAY AS MEASURED FROM THE CENTER OF THE CURB RAMP TO THE CENTER FACE OF THE FURTHEST UNIT.
- 6) CONCRETE SHALL HAVE A 28 DAY ULTIMATE COMPRESSIVE STRENGTH OF 3300 PSI.
- 7) ALL WORK SHALL COMPLY WITH CURRENT PROWAG GUIDELINES AND THE CURRENT EDITION OF OREGON STANDARD SPECIFICATIONS FOR CONSTRUCTION.

**City of
McMinnville**

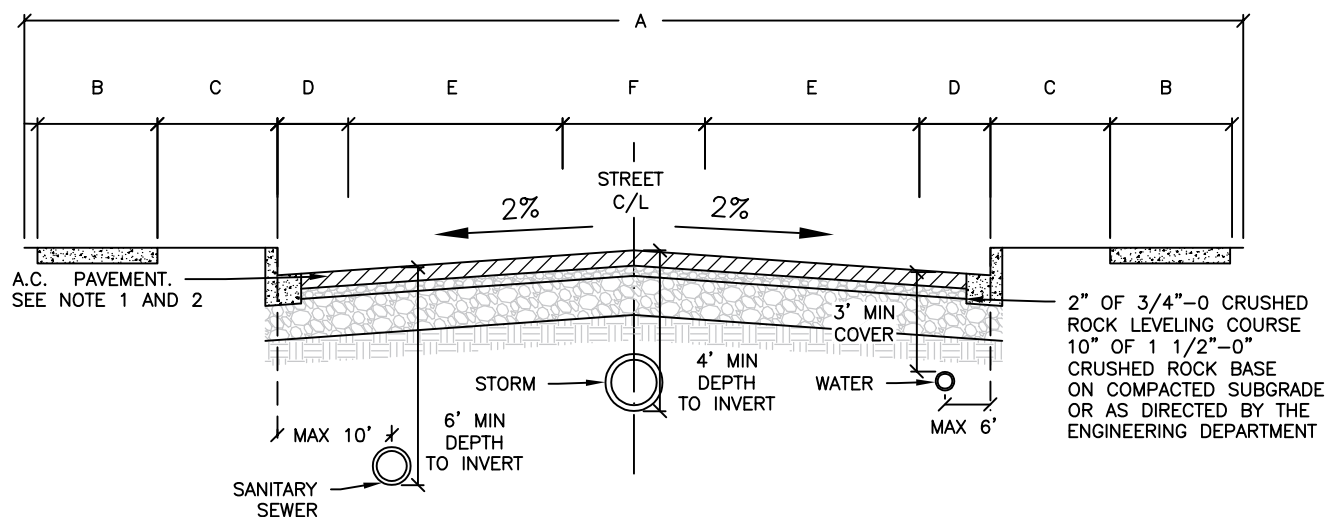
DETAIL FOR
CLUSTERED MAILBOX UNITS

DATE:

MAY 2025

DRAWING NO.

35



	A	B	C	D	E	F
	ROW	SIDEWALK	LANDSCAPE STRIP	BIKE LANE	TRAVEL LANE	MEDIAN LANE
MAJOR ARTERIAL	104'	8'	N/A	6'	12' (UP TO 4)	14'
MINOR ARTERIAL	76'	5' RES 10-12' COM	6' RES TREE WELLS COM	6'	11' (UP TO 2)	12'
MAJOR COLLECTOR	74'	5' RES 10-12' COM	6' RES TREE WELLS COM	5'	11' (UP TO 2)	12'
MINOR COLLECTOR	56-6 6'	5' RES 10-12' COM	6' RES TREE WELLS COM	5' OR SHARED LANE	10' (UP TO 2)	10'
LOCAL	50'	5'	5'	SHARED LANE	SINGLE LANE	N/A

NOTES:

1. MINIMUM ASPHALT LIFT OF 1.5", MAXIMUM ASPHALT LIFT OF 3"
2. 5" MINIMUM ASPHALT THICKNESS FOR COLLECTOR AND ARTERIAL STREETS, 3" MINIMUM FOR LOCAL STREETS
3. MAXIMUM STREET GRADE DEPENDANT ON STREET TYPE, SEE McMINNVILLE MUNICIPAL CODE 17.53.101(L)(1)
4. CURB AND GUTTER BUILT TO McMINNVILLE STANDARD DETAIL NO. 6
5. MAJOR ARTERIAL STREETS MAY HAVE 2 OR 4 TRAVEL LANES
6. REFERENCE ADOPTED TRANSPORTATION SYSTEMS PLAN FOR OTHER REQUIREMENTS AND DETAILS
7. ALTERNATE UTILITY LOCATIONS CAN BE CONSIDERED AND APPROVED BY ENGINEERING. LOCATION OF MANHOLES SHOULD BE OUT OF THE TIRE PATH AND AVOID CONFLICTS WITH SURVEY MONUMENTS OR OTHER IMPROVEMENTS

**City of
McMinnville**

DETAIL FOR TYPICAL STREET SECTION

DRAWN BY:

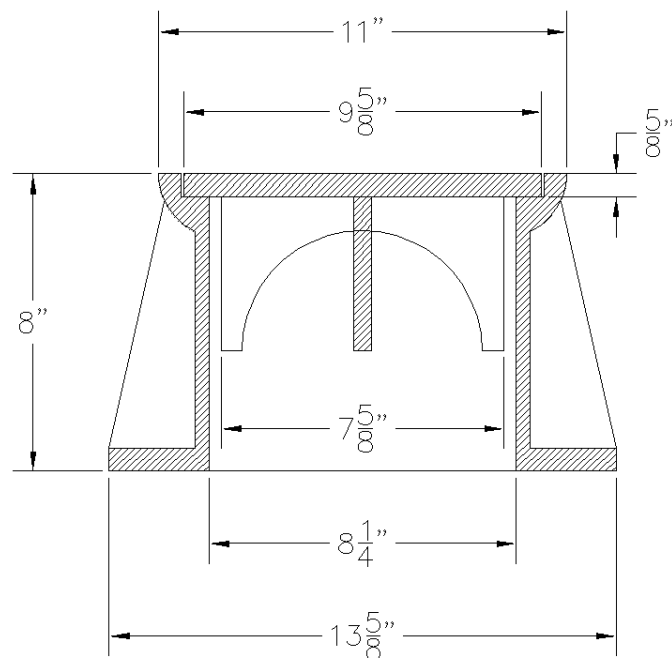
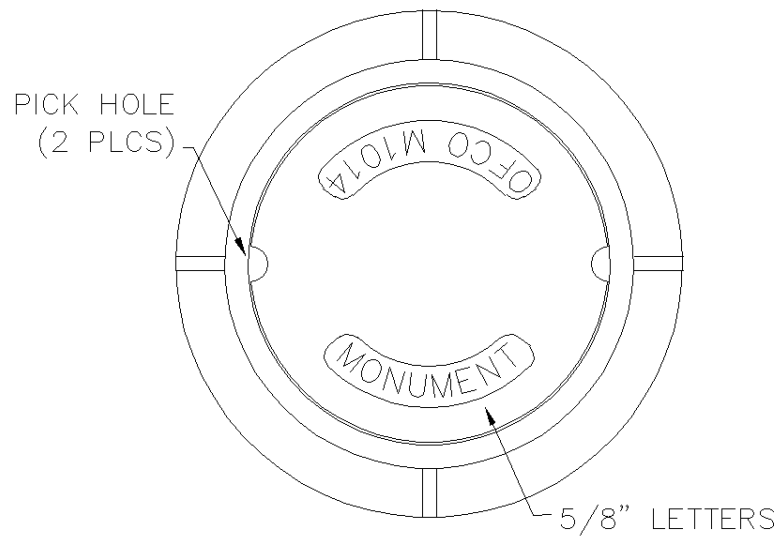
L.A.

DATE:

FEBRUARY 2025

DRAWING NO.

40



NOTES:

OLYMPIC FOUNDRY INC.

8" X 8" WASHINGTON COUNTY RING & COVER

MATL: Cast Iron ASTM A48, CL30

RATING: H-20

PART NO. M1014

APPROX WT: Ring 52 Lbs, Cover 14 Lbs

REV: A DATE: 10/7/2003 Created drawing

REV
A

DOCUMENT APPROVED
BY: DATE:

DWN: CL DATE: 10/7/2003

CHKD: CL DATE: 10/7/2003

TOLERANCE
XX +/- .1
XXX +/- .06
XXXX +/- .030
< +/- 2 DEG

REV: DATE:

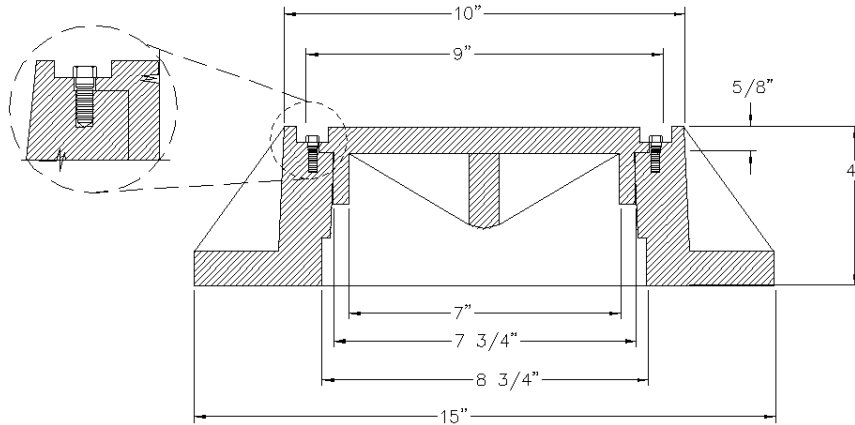
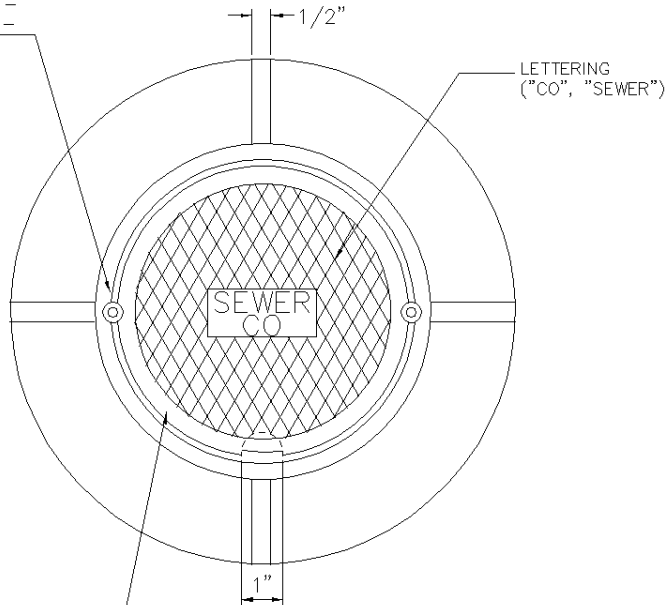
DWG #: M1014

SCALE: N/A

SHEET: 1 OF 1

DRILL & TAP (SPLITTING
THE SEAM) SET MADE BOLT-
DOWN WITH 3/8" S.S. ALLEN-
HEAD BOLTS - 2 PLACES

1/8" RAISE - 1/2" WIDE
BORDER



NOTES:

OLYMPIC FOUNDRY INC.

8" X 4" LOCKING CLEAN-OUT RING & COVER

MATL: Cast Iron ASTM A48, CL30

RATING: H-20

PART NO. M1007 D/T

APPROX WT: Ring - 42 Lbs, Cover 14 - Lbs

REV: A DATE: 7/9/2003 New border

REV
A

DOCUMENT APPROVED
BY: DATE:

DWN: CL DATE: 7/9/2003

CHKD: CL DATE: 7/9/2003

TOLERANCE
XX +/- .1
XXX +/- .06
XXXX +/- .030
< +/- 2 DEG

REV: DATE:

DWG #: M1007 DT

SCALE: N/A

SHEET: 1 OF 1