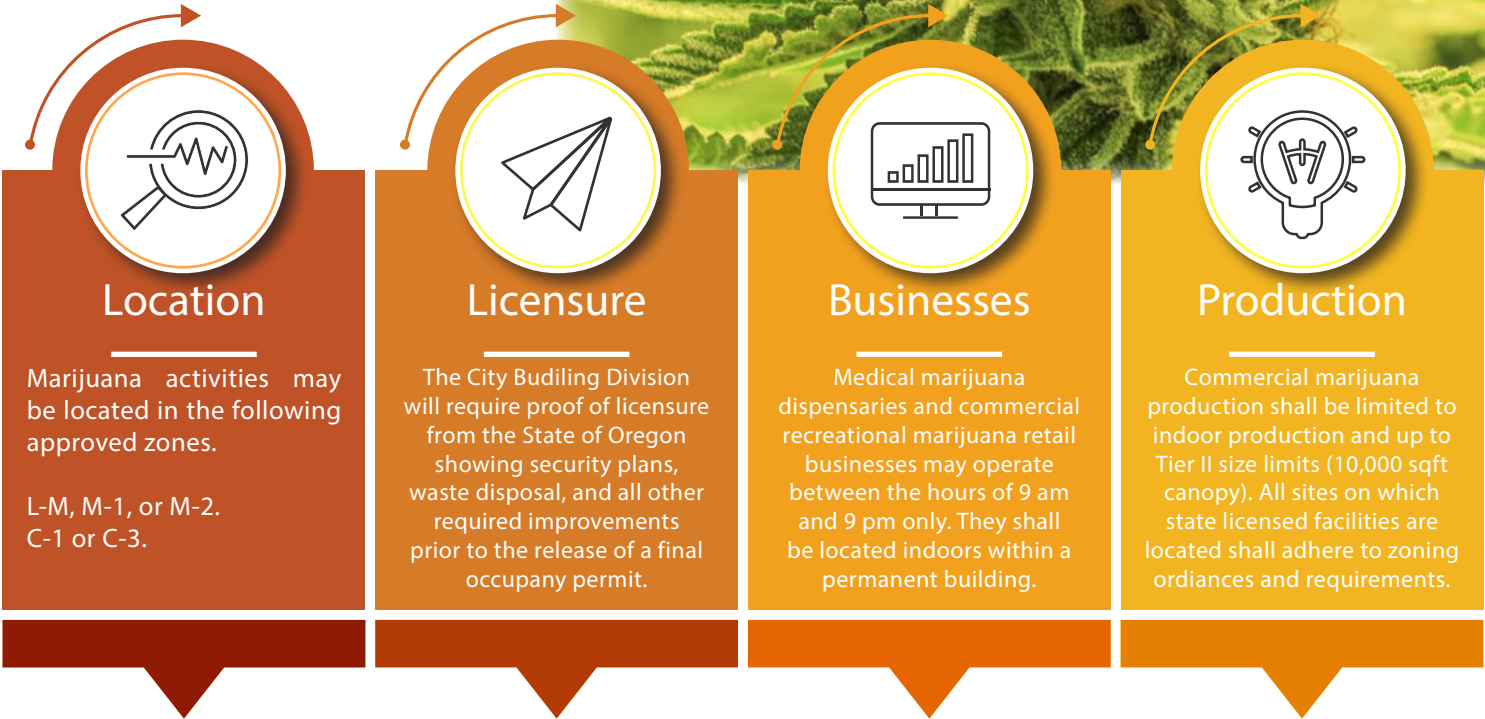




Marijuana Related Activity



More on Retail Activities

Any state licensed activity may not be located in a trailer, cargo container, or motor vehicle. Outdoor storage of any merchandise, plants or other related materials, is not allowed. No drive-through facilities or temporary facilities of any kind shall be permitted. There should be no marijuana paraphernalia visible from the exterior of the building. Medical marijuana dispensaries may not be located within 1,000 ft of another state licensed dispensary or any of the following: school, library, community center, or aquatic center.

Types of Approved Zones

- M-1 or M-2: State Licensed medical marijuana processing or production, or commercial recreational marijuana processing or production.
- L-M, M-1, or M-2: State licensed commercial marijuana wholesale.
- C-1 or C-3: State licensed medical marijuana dispensary or commercial recreational marijuana retail business.



231 NE 5th Street



503-434-7311



www.mcminnvilleoregon.gov