



Transportation System Plan



D TSP Project Summaries and Planning-Level Cost Estimates

Appendix D summarizes the TSP Complete Street, bicycle and pedestrian plan projects. Included in each are the planning-level cost estimates, based on 2008 dollars.

Existing Conditions



Improvements



Multi-Modal



| | | | |
|------------------|---|---|---|
| Safety | x | x | x |
| Capacity | x | x | x |
| Access/Circulate | | x | x |
| Operations | x | | |
| Freight | | | |

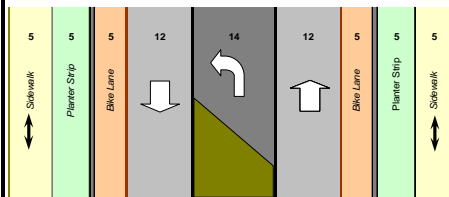


Problems

- * Deficient Bridge
- * Missing Sidewalks, Bike Lanes & Turn-Lanes
- * Poor Pavement
- * Substandard Urban Arterial



Profile



PM Peak Hour Traffic (both dir)

| | |
|------------|------|
| 2003 | 1000 |
| 2023 | 1680 |
| % Increase | 68% |

- * Deficient Bridge Replacement
- * Added Turn Lanes - Street Capacity & Safety
- * Added Sidewalks - Critical Connection to Hwy 99W
- * Added Bicycle Lanes - Critical Southern City Connector
- * New Traffic Signal at Cypress
- * Streetscape Amenities



Project Costs

Street Improvements

| | |
|---|--------------------|
| New Widening | \$0 |
| Right-of-Way | \$181,500 |
| Traffic Control New/Replacement Signal(s) Special | \$200,000 |
| Bridge | \$792,000 |
| Total Cost | \$2,371,400 |



Funding Plan

| | |
|--------------------|--------------------|
| Transportation SDC | TBD |
| Special Grants | TBD |
| Other City | |
| Local Funds | TBD |
| ODOT/County | County TBD |
| Total: | \$2,371,400 |



Existing Conditions

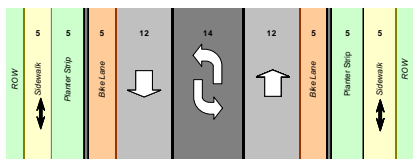


Problems

- * Rural Cross-section
- * Missing Sidewalks, Bike Lanes & Turn-lanes
- * Substandard Urban Arterial



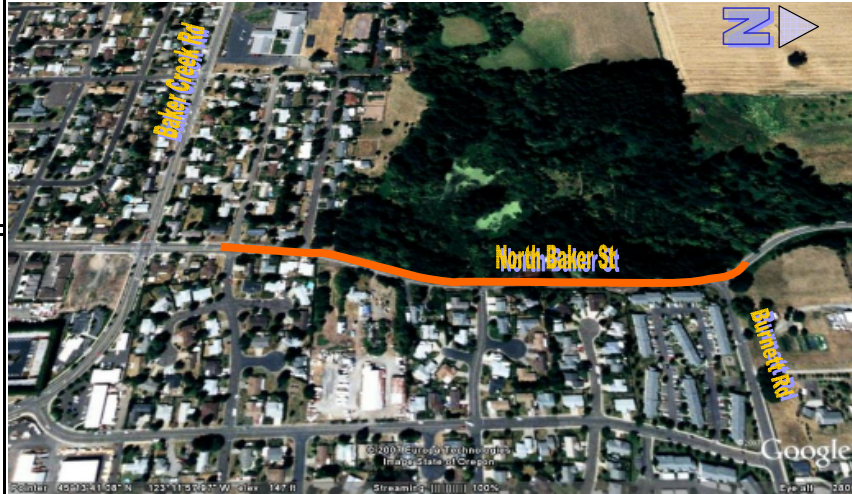
Profile



| PM Peak Hour Traffic (both dir) | |
|---------------------------------|------------|
| 2003 | 460 |
| 2023 | 715 |
| % Increase | 55% |



Improvements



Multi-Modal



| | | | |
|------------------|---|---|---|
| Safety | x | x | x |
| Capacity | x | x | x |
| Access/Circulate | | x | x |
| Operations | x | | |
| Freight | | | |



Project Costs

| | |
|---------------------------|------------------|
| Street Improvements | |
| New | \$0 |
| Widening | \$696,300 |
| Right-of-Way | \$105,500 |
| Traffic Control | |
| New/Replacement Signal(s) | \$0 |
| Special | |
| Bridge | \$0 |
| Total Cost | \$801,800 |



Funding Plan

| | |
|--------------------|------------------|
| Transportation SDC | TBD |
| Special Grants | TBD |
| Other City | |
| Local Funds | TBD |
| ODOT/County | County TBD |
| Total: | \$801,800 |

- * Urban Street Upgrade - Street Capacity & Safety
- * Added Sidewalks
- * Added Bicycle Lanes - Critical Northwestern City Connector
- * Streetscape Amenities



Improvements



Multi-Modal

| | |
|------------------|---|
| Safety | x |
| Capacity | x |
| Access/Circulate | x |
| Operations | x |
| Freight | x |



Project Costs

| | |
|---|---------------------|
| Street Improvements | TBD |
| New Widening | |
| Right-of-Way | |
| Traffic Control New/Replacement Signal(s) Special | \$1,000,000 |
| Interchanges | \$25,000,000 |
| Total Cost | \$26,000,000 |



Funding Plan

| | |
|--------------------|-------------------------|
| Transportation SDC | |
| Special Grants | |
| Private | TBD |
| Local Funds | |
| ODOT/County | ODOT TBD |
| Total: | \$25,500,000 "+" |



Problems

- * Diminishing highway capacity conditions
- * Local land plan development and access needs

3- Phase ODOT Hwy 18 Plan Implementation

- * Two New Interchanges
- * Collector Street Access Routes
- * New Traffic Signals



Hwy 18 Corridor Plan

Existing Conditions

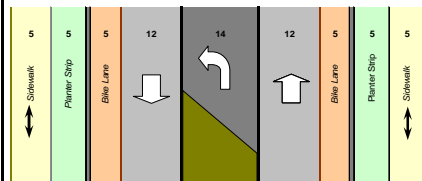


Problems

- * Rural Cross-section
- * Missing Sidewalks, Bike Lanes & Turn-Lanes
- * Poor Pavement
- * Substandard Urban Arterial



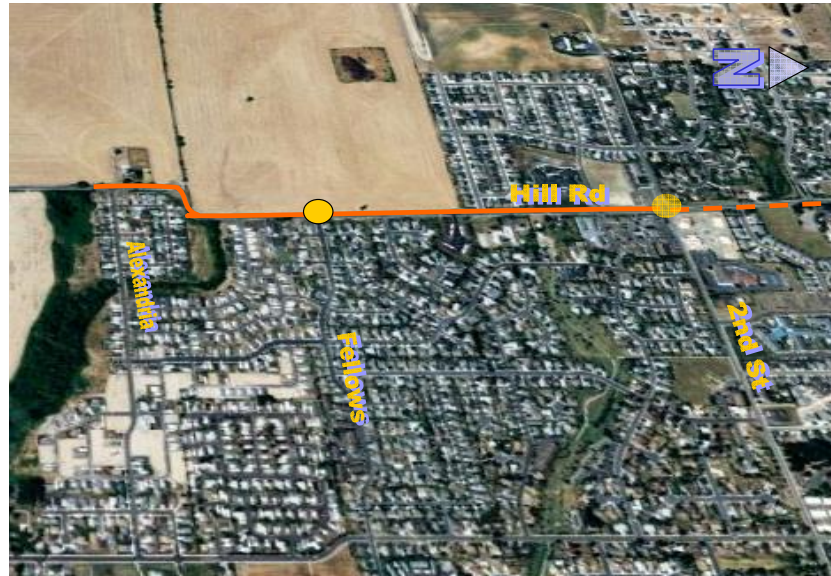
Profile



| PM Peak Hour Traffic (both dir) | |
|---------------------------------|-------------|
| 2003 | 165 |
| 2023 | 365 |
| % Increase | 121% |



Improvements



- * Urban Street Upgrade - Street Capacity & Safety
- * Added Sidewalks - Critical Access to Schools
- * Added Bicycle Lanes - Critical Western City Connector
- * New Roundabout at Fellows
- * Streetscape Amenities



Multi-Modal



| | | | |
|------------------|---|---|---|
| Safety | x | x | x |
| Capacity | x | x | x |
| Access/Circulate | x | x | x |
| Operations | x | | |
| Freight | | | |



Project Costs

| | |
|---------------------------|--------------------|
| Street Improvements | |
| New | \$0 |
| Widening | \$2,788,500 |
| Right-of-Way | \$686,500 |
| Traffic Control | |
| New/Replacement Signal(s) | \$200,000 |
| Special | |
| Bridge | \$0 |
| Total Cost | \$3,675,000 |



Funding Plan

| | |
|--------------------|--------------------|
| Transportation SDC | TBD |
| Special Grants | TBD |
| Other City | |
| Local Funds | TBD |
| ODOT/County | County TBD |
| Total: | \$3,675,000 |

Existing Conditions



Improvements



Multi-Modal

| | | | | |
|------------------|---|---|---|--|
| | | | | |
| Safety | x | x | x | |
| Capacity | x | x | x | |
| Access/Circulate | x | x | x | |
| Operations | x | | | |
| Freight | | | | |

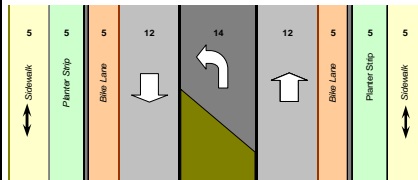


Problems

- * Rural Cross-section
- * Missing Sidewalks, Bike Lanes & Turn-Lanes
- * Poor Pavement
- * Substandard Urban Arterial



Profile



| PM Peak Hour Traffic (both dir) | |
|---------------------------------|-------------|
| 2003 | 365 |
| 2023 | 900 |
| % Increase | 147% |

- * Urban Street Upgrade - Street Capacity & Safety
- * Added Sidewalks - Critical Access to Schools
- * Added Bicycle Lanes - Critical Western City Connector
- * New Roundabouts or Traffic Signals at Baker Creek Road, Wallace and Second Streets
- * Streetscape Amenities



Project Costs

| | |
|---------------------------|--------------------|
| Street Improvements | |
| New | \$0 |
| Widening | \$4,530,900 |
| Right-of-Way | \$686,500 |
| Traffic Control | |
| New/Replacement Signal(s) | \$600,000 |
| Special | |
| Bridge | \$0 |
| Total Cost | \$5,817,400 |



Funding Plan

| | |
|--------------------|--------------------|
| Transportation SDC | TBD |
| Special Grants | TBD |
| Other City | |
| Local Funds | TBD |
| ODOT/County | County TBD |
| Total: | \$5,817,400 |

Existing Conditions

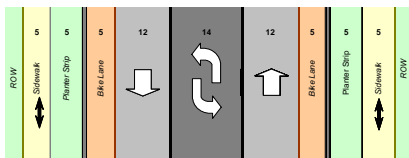


Problems

- * Rural Cross-section
- * Missing Sidewalks, Bike Lanes & Turn-lanes
- * Substandard Urban Arterial



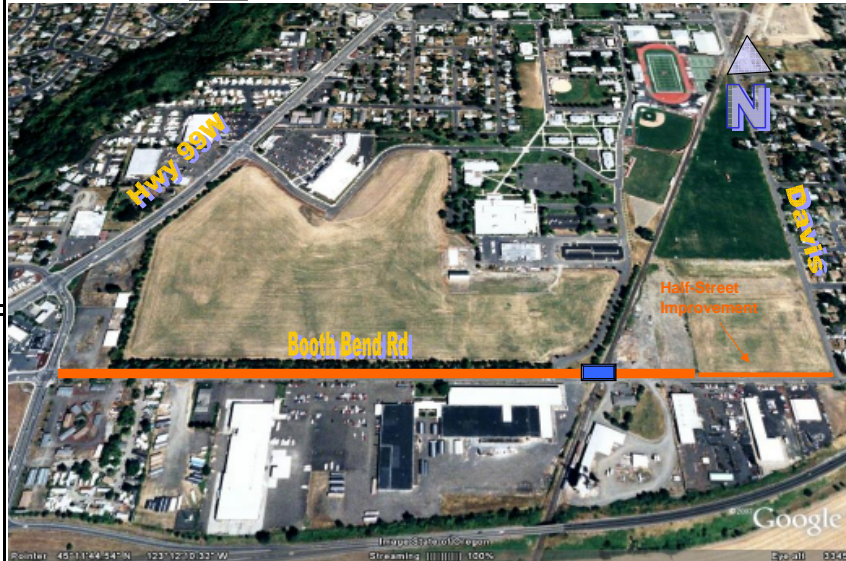
Profile



| PM Peak Hour Traffic (both dir) | |
|---------------------------------|------------|
| 2003 | 460 |
| 2023 | 715 |
| % Increase | 55% |



Improvements



Multi-Modal

| | Car | Pedestrian | Bike | Bus |
|------------------|-----|------------|------|-----|
| Safety | x | x | x | |
| Capacity | x | x | x | |
| Access/Circulate | | x | x | |
| Operations | x | | | |
| Freight | x | | | |



Project Costs

| | |
|-----------------------------|--------------------|
| Street Improvements | |
| New Widening | \$2,301,300 |
| Right-of-Way | \$348,700 |
| Traffic Control | |
| New/Replacement Signal(s) | |
| Special (Railroad crossing) | \$200,000 |
| Bridge | \$0 |
| Total Cost | \$2,850,000 |



Funding Plan

| | |
|--------------------|--------------------|
| Transportation SDC | TBD |
| Special Grants | TBD |
| Other City | |
| Private | TBD |
| Local Funds | TBD |
| ODOT/County | County |
| Total: | \$2,850,000 |

- * Urban Street Upgrade - Street Capacity & Safety
- * Added Sidewalks & Railroad Crossing - Critical Connector to New School
- * Added Bicycle Lanes - Critical Southern City Connector
- * Streetscape Amenities

Existing Conditions

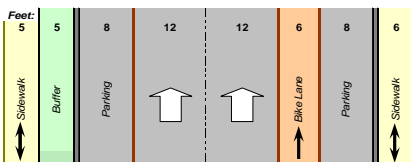


Problems

- * Heavy, Higher-Speed North-South Traffic
- * Crossing Pedestrian Travel
- * Poor Lighting



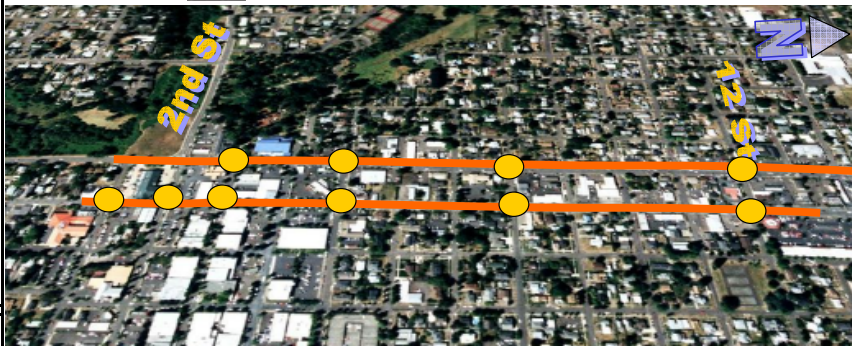
Profile



| PM Peak Hour Traffic (both dir) | |
|---------------------------------|------------|
| 2003 | 1500 |
| 2023 | 1935 |
| % Increase | 29% |

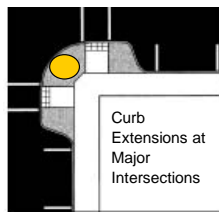


Improvements



- * Curb Extensions at Major Intersections
- * Cross-walk Delineation (pavers)
- * New Curb Ramps w/ Pavement Replacement
- * Pedestrian-Scale Lighting

Pedestrian Features



Bicycle Features



Multi-Modal

| | Car | Person | Bike | Bus |
|------------------|-----|--------|------|-----|
| Safety | x | x | x | |
| Capacity | | x | x | |
| Access/Circulate | | x | x | |
| Operations | | | | |
| Freight | | | | |



Project Costs

| | |
|--|------------------|
| Street Improvements | |
| New | \$0 |
| Widening | \$0 |
| Resurfacing w/ Curb Ramps Right-of-Way | \$435,800 |
| Traffic Control | |
| New/Replacement Signal(s) | \$0 |
| Curb Extensions Special : Ped-Scale Lighting | \$200,000 |
| Bridge | \$0 |
| Total Cost | \$745,800 |



Funding Plan

| | |
|--------------------|------------------|
| Transportation SDC | TBD |
| Special Grants | TBD |
| Other City | |
| Local Funds | TBD |
| ODOT/County | ODOT TBD |
| Total: | \$745,800 |

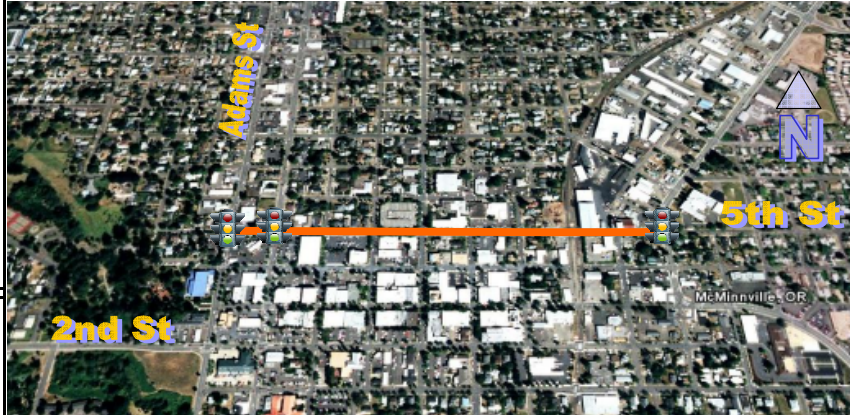


Adams-Baker Couplet

Existing Conditions



Improvements



Multi-Modal

| | Car | Person | Bike | Bus |
|------------------|-----|--------|------|-----|
| Safety | x | x | x | |
| Capacity | x | x | x | |
| Access/Circulate | x | x | x | x |
| Operations | x | | | |
| Freight | | | | |

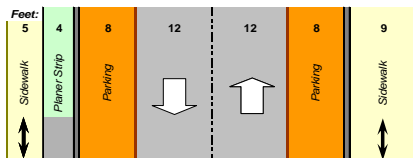


Problems

- * East-West Downtown streets at or over capacity
- * Underutilized corridor
- * Poor pavement condition



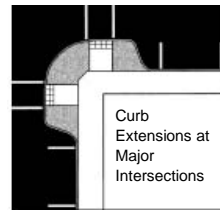
Profile



| PM Peak Hour Traffic (both dir) | |
|---------------------------------|-------------|
| 2003 | 205 |
| 2023 | 700 |
| % Increase | 241% |

- * Critical Alternative to 1st / 2nd / 3rd Streets
- * Pavement Repair
- * Curb Ramp & Sidealk Replacement as Needed
- * Added Traffic Signals at Hwy 99W and Lafayette
- * Remove Signal at Adams/4th Street

Pedestrian Features



Bicycle Features



Project Costs

| | |
|---------------------------|--------------------|
| Street Improvements | |
| New | \$0 |
| Widening | \$0 |
| Resurfacing w/ Curb Ramps | \$403,500 |
| Right-of-Way | \$0 |
| Traffic Control | |
| New/Replacement Signal(s) | \$800,000 |
| Special | |
| Bridge | \$0 |
| Total Cost | \$1,203,500 |



Funding Plan

Transportation SDC TBD

Special Grants TBD

Other City

Local Funds TBD

ODOT/County

Total: \$1,203,500

Existing Conditions



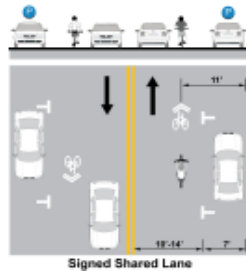
Problems

- * Aging Sidewalk Infrastructure

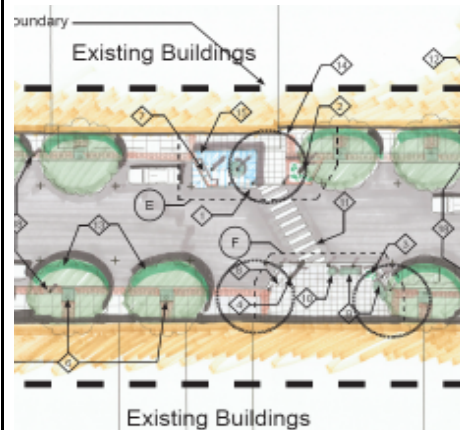
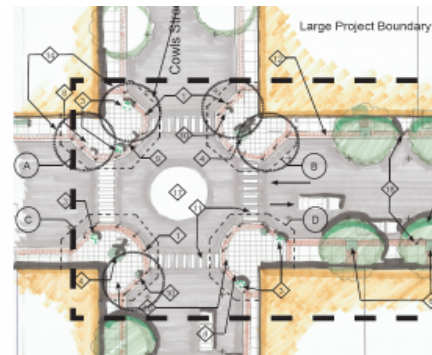
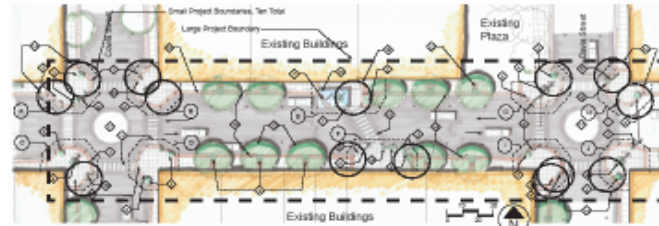


Profile

Bicycle Features



Improvements



Intersection

- * Curb Extension
- * Crosswalk Enhancement
- * Bike Racks
- * Planters
- * Benches
- * Sidewalk Replacement

Mid-Block

- * Street Trees
- * Shelters
- * Mid-Block Crosswalk
- * Bike Racks
- * Benches
- * Sidewalk Replacement



Multi-Modal



| | | | |
|------------------|---|---|---|
| Safety | x | x | x |
| Capacity | | x | x |
| Access/Circulate | | x | x |
| Operations | | | |
| Freight | | | |



Project Costs

Street Improvements

\$465,000 per block
5 blocks
Baker to Galloway

Total Cost **\$2,325,000**



Funding Plan

Transportation SDC TBD

Special Grants TBD

Other City

Local Funds TBD

ODOT/County TBD

Total: **\$2,325,000**



Transportation System Plan

3rd Street Streetscape Plan

Existing Conditions



Problems

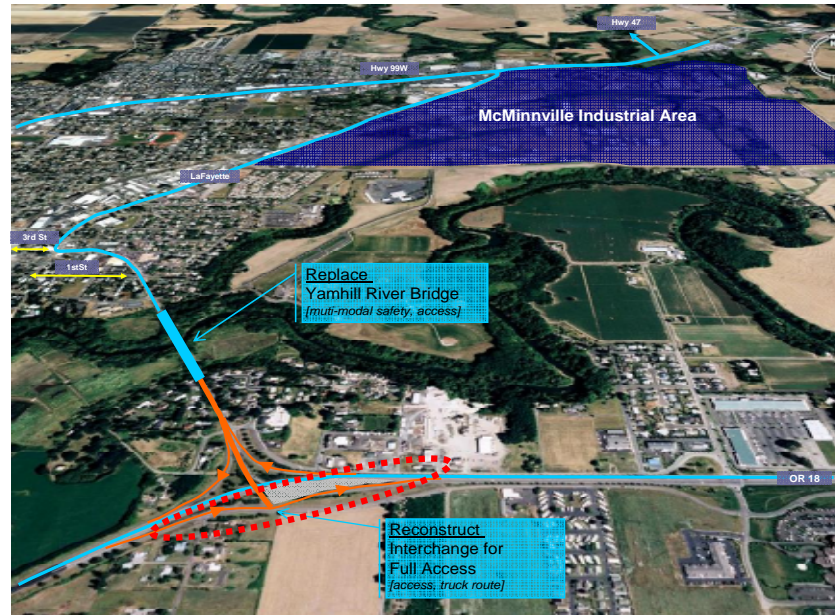
* Limited Directionality /
Access at Highway 18



Profile



Improvements



Phase III - ODOT Hwy 18 Plan Implementation

- * **Modify/Replace Overcrossing**
- * **Add Eastbound Off- and On-ramps**
- * **Provides Fully-Directional Truck Route!**
- * **Facilitates Hwy 18 Grade-Separation Access**



Multi-Modal



- Safety x
- Capacity x
- Access/Circulate x
- Operations x
- Freight x



Project Costs

| | |
|---------------------------|--------------------|
| Street Improvements | |
| New | \$0 |
| Widening | \$0 |
| Right-of-Way | \$0 |
| Traffic Control | |
| New/Replacement Signal(s) | \$0 |
| Special | |
| Bridge | \$5,000,000 |
| Total Cost | \$5,000,000 |



Funding Plan

| | |
|--------------------|--------------------|
| Transportation SDC | TBD |
| Special Grants | TBD |
| Other City | |
| Local Funds | TBD |
| ODOT/County | ODOT TBD |
| Total: | \$5,000,000 |

Existing Conditions



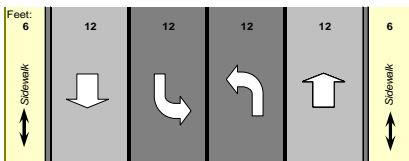
Problems

- * Heavy E-W Traffic Queuing
- * Traffic Signal Capacity



Profile

2nd Street: Between Adams & Baker



| PM Peak Hour Traffic (both dir) | |
|---------------------------------|------------|
| 2003 | 695 |
| 2023 | 1105 |
| % Increase | 59% |

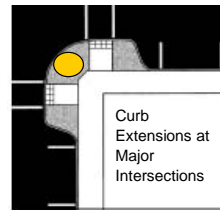


Improvements



- * Curb Extensions at Baker Street
- * Additional Westbound Travel Lane
- * Traffic Signal Replacement & Timing

Pedestrian Features



Bicycle Features



Multi-Modal



| | | | |
|------------------|---|---|---|
| Safety | x | x | x |
| Capacity | x | x | x |
| Access/Circulate | x | x | x |
| Operations | x | | |
| Freight | x | | |



Project Costs

Street Improvements

| | |
|---------------------------|-----------|
| New Widening | \$0 |
| Resurfacing w/ Curb Ramps | \$627,000 |
| Right-of-Way | \$0 |

Traffic Control

| | |
|------------------------------|-----------|
| New/Replacement Signal(s) | \$400,000 |
| Curb Extensions | \$40,000 |
| Special : Ped-Scale Lighting | \$30,000 |
| Bridge | \$0 |

Total Cost \$1,097,000



Financial Plan

Transportation SDC TBD

Special Grants TBD

Other City

Local Funds TBD

ODOT/County TBD

Total: \$1,097,000

Existing Conditions

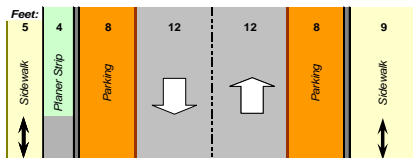


Problems

- * Heavy, Higher-Speed East-West Traffic
- * Crossing Pedestrian Travel
- * Poor Lighting



Profile



| PM Peak Hour Traffic (both dir) | |
|---------------------------------|------------|
| 2003 | 695 |
| 2023 | 1105 |
| % Increase | 59% |



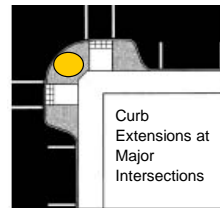
Improvements



Downtown Plan Implementation

- * Curb Extensions at Major Intersections
- * Cross-walk Delineation (pavers)
- * Curb Ramp Replacements
- * Pedestrian-Scale Lighting
- * New Traffic Signal at Davis

Pedestrian Features



Bicycle Features



Multi-Modal



| | | | |
|------------------|---|---|---|
| Safety | x | x | x |
| Capacity | | x | x |
| Access/Circulate | | x | x |
| Operations | | | |
| Freight | | | |



Project Costs

Street Improvements

| | |
|---------------------------|-----------|
| New | \$0 |
| Widening | \$0 |
| Resurfacing w/ Curb Ramps | \$316,500 |
| Right-of-Way | \$0 |

Traffic Control

| | |
|------------------------------|-----------|
| New/Replacement Signal(s) | \$200,000 |
| Curb Extensions | \$400,000 |
| Special : Ped-Scale Lighting | \$80,000 |
| Bridge | \$0 |

Total Cost \$996,500



Funding Plan

Transportation SDC TBD

Special Grants TBD

Other City

Local Funds TBD

ODOT/County TBD

Total: \$996,500

Existing Conditions

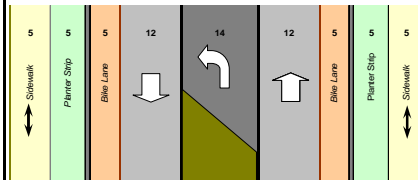


Problems

- * Substandard Depth/Width
- * Missing Sidewalks
- * Poor Pavement
- * Substandard Railroad Crossing



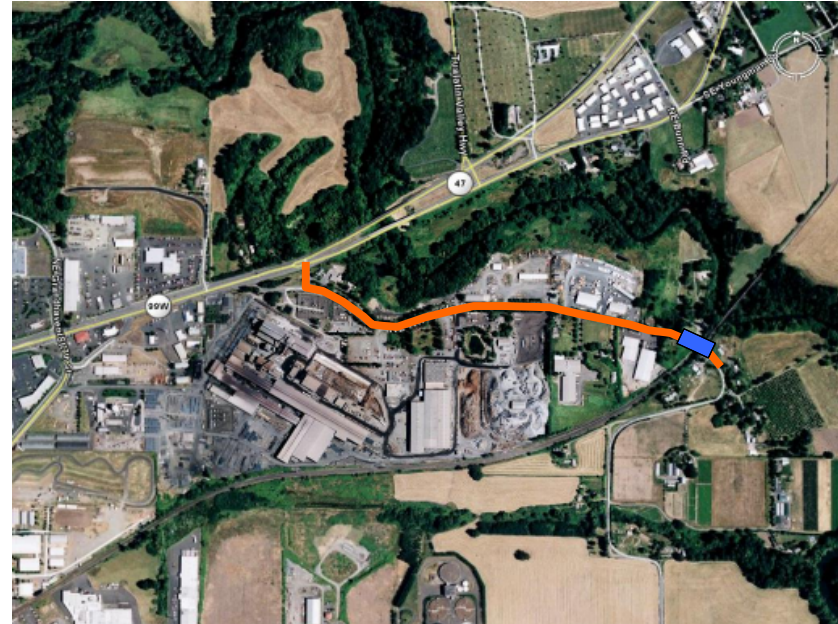
Profile



| PM Peak Hour Traffic (both dir) | |
|---------------------------------|------------|
| 2003 | 315 |
| 2023 | 370 |
| % Increase | 17% |



Improvements



Multi-Modal



| | | | |
|------------------|---|---|---|
| Safety | x | x | x |
| Capacity | x | x | x |
| Access/Circulate | | x | x |
| Operations | x | | |
| Freight | x | | |



Project Costs

| | |
|---------------------------|--------------------|
| Street Improvements | |
| New | \$0 |
| Widening | \$2,265,100 |
| Right-of-Way | \$396,000 |
| Traffic Control | |
| Railroad Crossing Upgrade | \$250,000 |
| Special | |
| Other | |
| Total Cost | \$2,911,100 |



Funding Plan

| | |
|--------------------|--------------------|
| Transportation SDC | TBD |
| Special Grants | TBD |
| Other City | |
| Local Funds | TBD |
| ODOT/County | |
| Total: | \$2,911,100 |

Bicycle Project Costs

| Project | From | To | Length | Cost |
|----------------------|----------------|----------------|--------|------------------|
| Bike Lanes | | | | \$237,500 |
| Evans | Baker Creek Rd | 27th St | 0.29 | \$18,600 |
| Baker Creek Rd | Birch | Baker St | 0.18 | \$11,500 |
| Wallace | Hill Rd | 2nd st | 1.44 | \$92,200 |
| Michelbook | 2nd St | Baker Creek Rd | 1.15 | \$73,600 |
| Davis | RR Xing | 1st St | 0.65 | \$41,600 |
| | | | 3.71 | |
| Bike Sharrows | | | | \$312,000 |
| Fellows | Hill Rd | Hwy 99W | 1.4 | \$56,000 |
| 19th St | Michelbook | Lafayette | 1.4 | \$56,000 |
| 27th St | Baker | Hwy 99W | 1.1 | \$44,000 |
| McDonald | 14th St | 27th St | 0.7 | \$28,000 |
| Evans | 17th St | Hwy 99W | 0.22 | \$8,800 |
| Evans | 1st St | 8th St | 0.34 | \$13,600 |
| 14th St | Evans | RR Xing | 0.5 | \$20,000 |
| 5th St | Adams | Johnson | 0.5 | \$20,000 |
| 3rd St | Adams | Johnson | 0.5 | \$20,000 |
| 1st St | Adams | Johnson | 0.5 | \$20,000 |
| Davis | Linfield | 1st St | 0.64 | \$25,600 |
| | | | 7.8 | |

Priority Sidewalk Improvement Projects

| Street/Project | From | To | Length (mi) | Cost Est. |
|----------------|-------------|-----------------|-------------|-------------|
| 27th | Evans | McDaniel | 0.25 | \$396,000 |
| Evans | Baker Cr Rd | 27th St | 0.18 | \$285,120 |
| 19th | Hwy 99w | McDonald | 0.24 | \$380,160 |
| McDonald | Hwy 99w | 12th St | 0.21 | \$332,640 |
| McDaniel | Hwy 99w | Lafayette | 0.19 | \$300,960 |
| Michelbook | 12th St | 16th St | 0.16 | \$253,440 |
| 12th | Michelbook | Cedar | 0.3 | \$475,200 |
| Wallace | 2nd St | Wallace Way | 0.58 | \$918,720 |
| 14th St | Elm | Birch | 0.12 | \$190,080 |
| 16th St | Elm | Birch | 0.27 | \$427,680 |
| Birch | 14th St | 18th St | 0.16 | \$253,440 |
| Elm | 12th St | 17th St | 0.13 | \$205,920 |
| Adams | 1st St | Adams/Baker "y" | 0.25 | \$396,000 |
| Davis | Wilson | College | 0.26 | \$411,840 |
| Ford | 1st St | Cozine Creek | 0.13 | \$205,920 |
| Cleveland | Davis | Villard | 0.43 | \$681,120 |
| 5th St | Lafayette | Macy | 0.11 | \$174,240 |
| Macy | 5th St | 3rd St | 0.08 | \$126,720 |
| | | | 4.05 | \$6,415,200 |