

GWENDOLYN HOTEL

MCMINNVILLE, OR | LAND USE RE-SUBMITTAL | 11.04.2022



Otak Architects, Inc.
808 SW Third Avenue, Suite 800
Portland, OR 97204
main 503.287.6825
www.otak.com

PROJECT TEAM

OWNER/DEVELOPER
HD MCMINNVILLE
1619 NE KILLINGSWORTH STREET, SUITE A
PORTLAND, OR 97211
PHONE: (503) 926-3084
CONTACT: ANDREW CLARKE, MARK VUONG

ARCHITECT
OTAK ARCHITECTS, INC.
808 SW THIRD AVENUE, SUITE 800
PORTLAND, OR 97204
PHONE: (503) 287-6825 FAX: (503) 415-2304
CONTACTS: CASEY MCKENNA

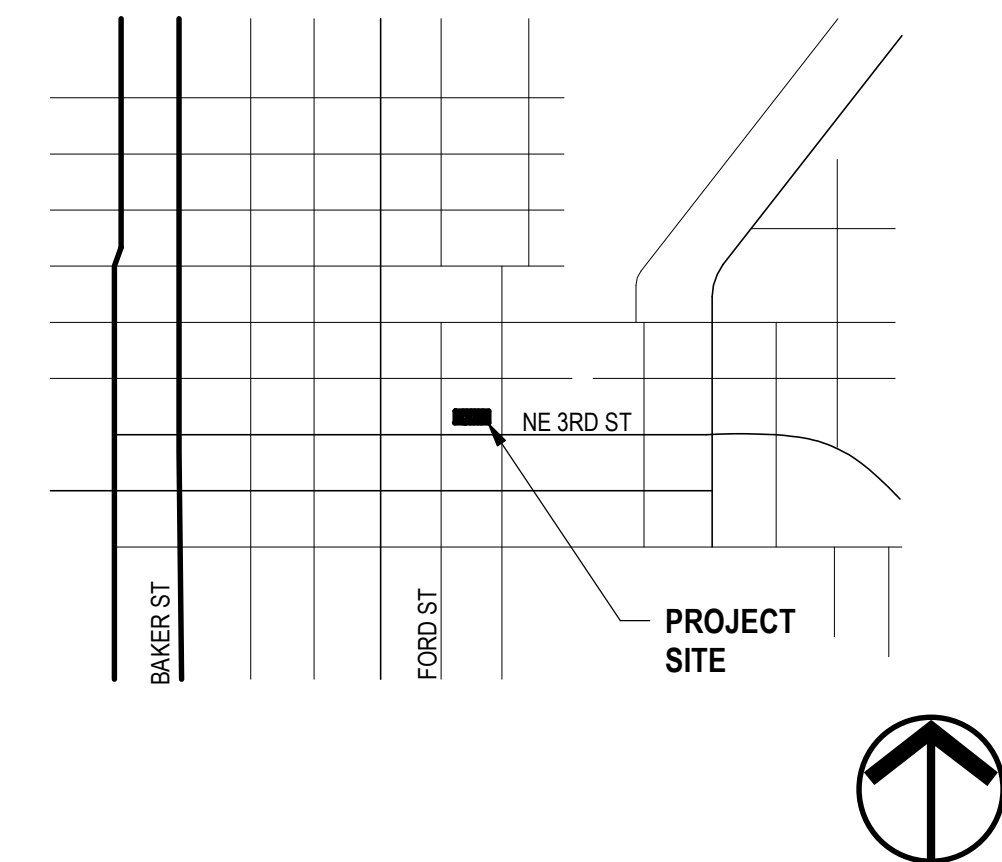
CIVIL ENGINEER
HARPER HOUFF PETERSON RIGHELLI INC.
202 SE SPOKANE STREET, SUITE 200
PORTLAND, OREGON, 97202
PHONE: (503) 221-1131
CONTACT: ALEX SIMPSON, PE

LANDSCAPE ARCHITECT
OTAK, INC.
808 SW 3RD AVENUE, SUITE 800
PORTLAND, OR 97204
PHONE: (503) 415-2325 FAX: (503) 415-2304
CONTACT: GABRIEL KRUSE, PLA

SHEET INDEX

GENERAL	ARCHITECTURE	LANDSCAPE
G0.00 COVER SHEET	A0.01 CONTEXT ELEVATIONS	L1.00 LANDSCAPE PLAN
EXISTING CONDITIONS	A1.01 SITE PLAN	
EX1.00 EXISTING SITE CONDITIONS	A2.01 FLOOR PLANS	
EX1.01 EXISTING BUILDING ELEVATIONS	A2.02 FLOOR PLANS	
	A3.01 EXTERIOR ELEVATIONS	
DEMOLITION	A3.02 EXTERIOR ELEVATIONS	
D1.01 DEMO SITE PLAN	A4.01 BUILDING SECTIONS	
	A6.01 BUILDING EXTERIORS	
	A6.02 BUILDING EXTERIORS	
	A6.03 BUILDING EXTERIORS	
	A6.04 SIGHT LINES	
	A6.05 MATERIALS BOARD	
	A7.01 PERSPECTIVE - RENDERED	
	A7.02 PERSPECTIVES	
	A7.03 PERSPECTIVES	
	A7.04 PERSPECTIVES	

VICINITY MAP



STAMP

CONSULTANT

GWENDOLYN HOTEL
609 NE 3RD STREET, 611 NE 3RD STREET, 619 NE 3RD STREET
MCMINNVILLE, OREGON 97128
COVER SHEET

TITLE

#	DATE	DESCRIPTION

REVISIONS

Author	Checker
DRAWN BY	CHECK BY
LAND USE RE-SUBMITTAL	
STATUS	
11/04/2022	
DATE	
19914	
PROJECT NUMBER	

G0.00

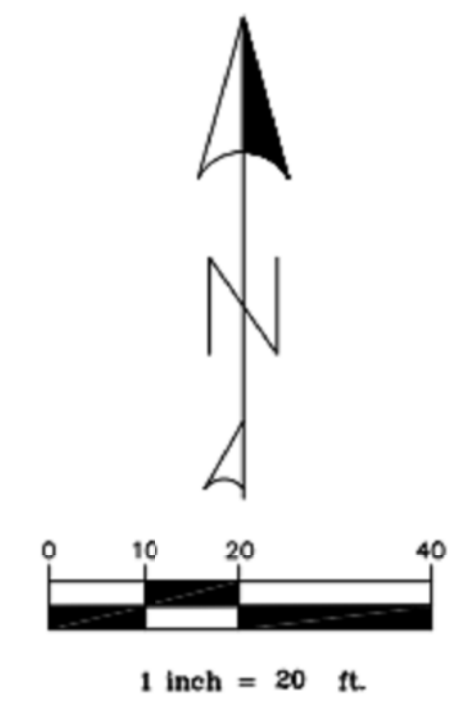
© 2022 OTAK, INC.
If this drawing is not 24" x 36", it has been reduced/enlarged. Scale accordingly.

TOPOGRAPHIC SURVEY
LOTS 5, 6, AND 7, BLOCK 7 "ROWLANDS"
MCNINNVILLE, OREGON
MAY 17, 2022

BASIS OF BEARING IS OREGON STATE PLANE
(3601 OR N) NAD_83 (2011)(EPOCH:2010.000)
BY STATIC OBSERVATION ON APRIL 26, 2022
POST PROCESSED THROUGH OPUS
VERTICAL DATUM IS NAVD88 (GEOID18)



- EDGE OF PAVEMENT
- FENCE
- SANITARY SEWER LINE
- SANITARY MANHOLE
- STORM DRAIN LINE
- STORM MANHOLE
- CATCH BASIN
- WATER LINE
- VALVE
- WATER METER
- FIRE HYDRANT
- POWER POLE
- POWER LINE
- GAS LINE
- TELEPHONE / COMMUNICATION
- TELEPHONE MH
- CONCRETE
- SIGN
- FOUND MONUMENT AS NOTED
- SANITARY CLEAN OUT
- CLEAN OUT
- CONIFEROUS TREE
- DECIDUOUS TREE
- GAS METER



REGISTERED
PROFESSIONAL
LAND SURVEYOR
[Signature]
OREGON
JULY 19, 1994
FREDERIC C. FORD
2665
12-31-23
RENEWAL DATE

STAMP

CONSULTANT

GWENDOLYN HOTEL
609 NE 3RD STREET, 611 NE 3RD STREET, 619 NE 3RD STREET
MCNINNVILLE, OREGON 97128
EXISTING SITE CONDITIONS

TITLE

DATE DESCRIPTION

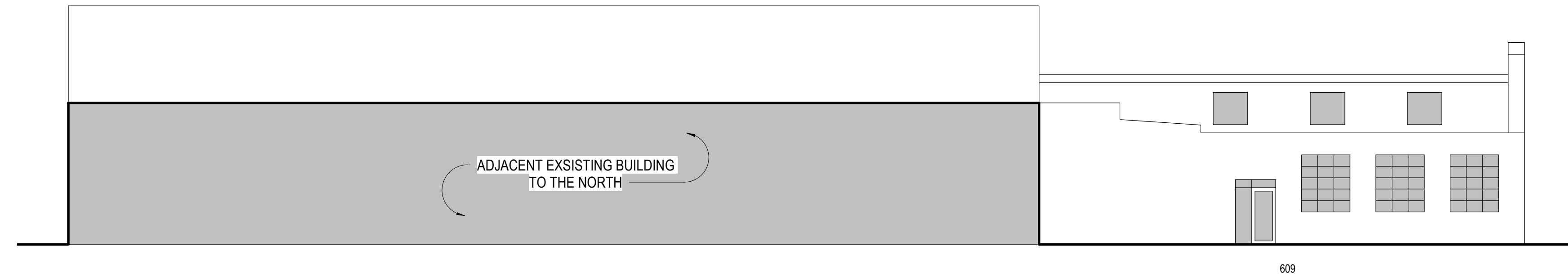
REVISIONS
Author Checker
DRAWN BY CHECK BY
LAND USE RE-SUBMITTAL
STATUS
11/04/2022
DATE
1994
PROJECT NUMBER

EX1.00

© 2022 OTAK, INC.
If this drawing is not 24" x 36", it has been reduced/enlarged. Scale accordingly.

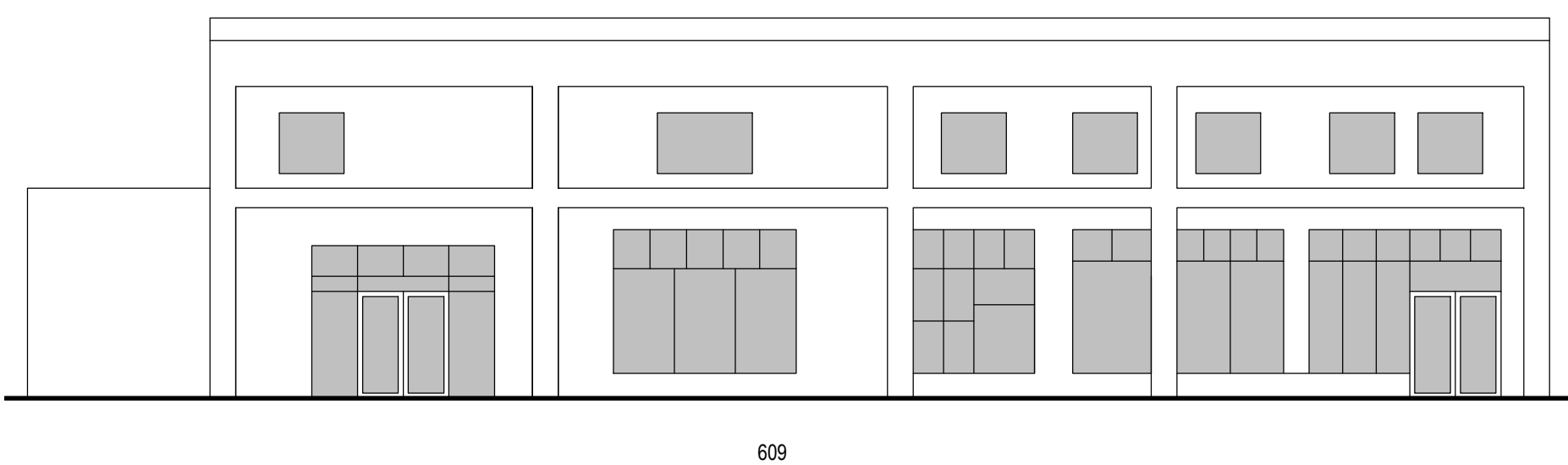


Ford Engineering, Inc.
Civil Engineering & Land Surveying
12205 Ioka Way NW Phone (360) 588-2124
Silverdale, Washington 98383 Fax (503) 296-2374



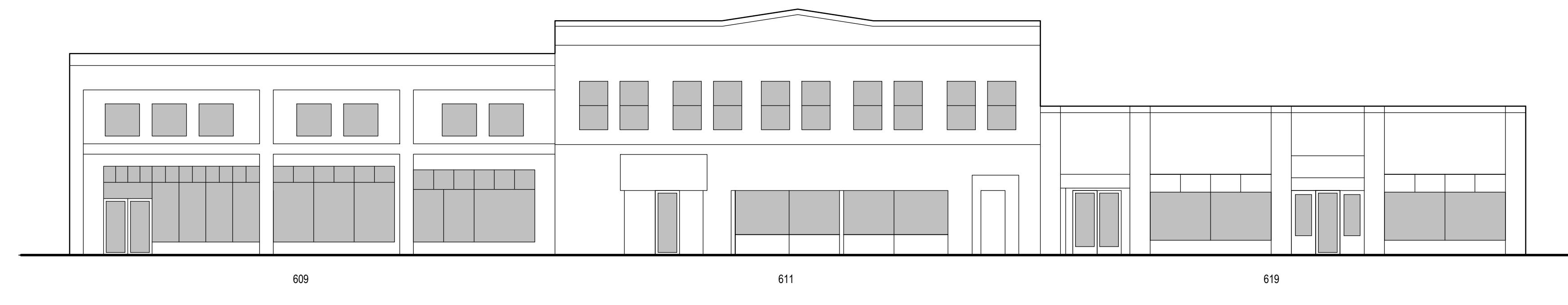
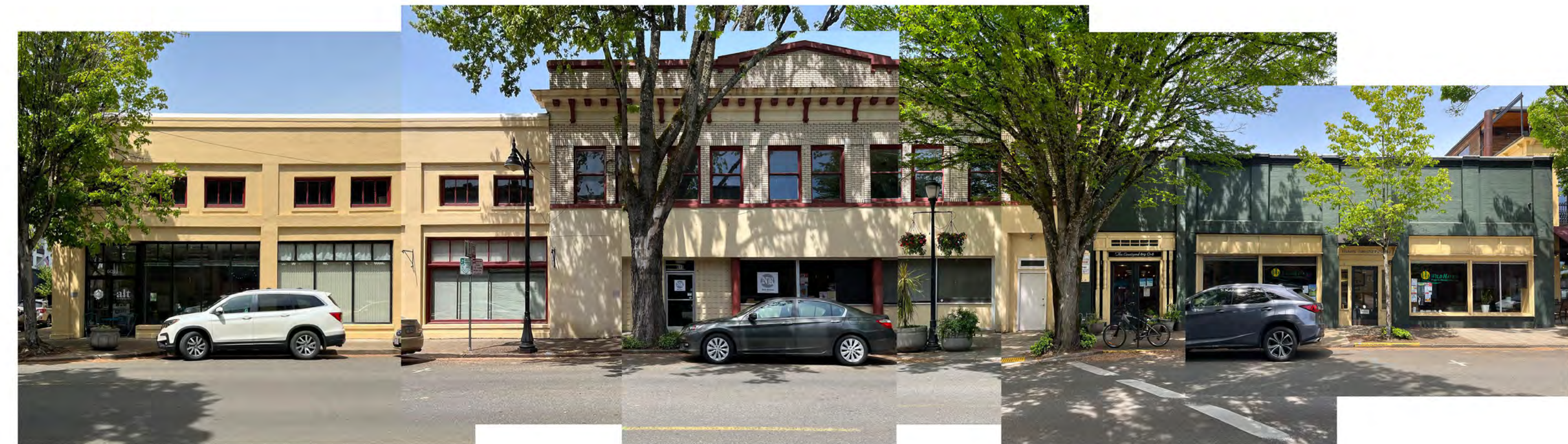
EXISTING NORTH ELEVATION

SCALE: 3/32" = 1'-0"



EXISTING WEST ELEVATION

SCALE: 3/32" = 1'-0"



EXISTING SOUTH ELEVATION

SCALE: 3/32" = 1'-0"

STAMP

CONSULTANT

GWENDOLYN HOTEL
 609 NE 3RD STREET, 611 NE 3RD STREET, 619 NE 3RD STREET
 MCMINNVILLE, OREGON 97128

EXISTING BUILDING ELEVATIONS

TITLE

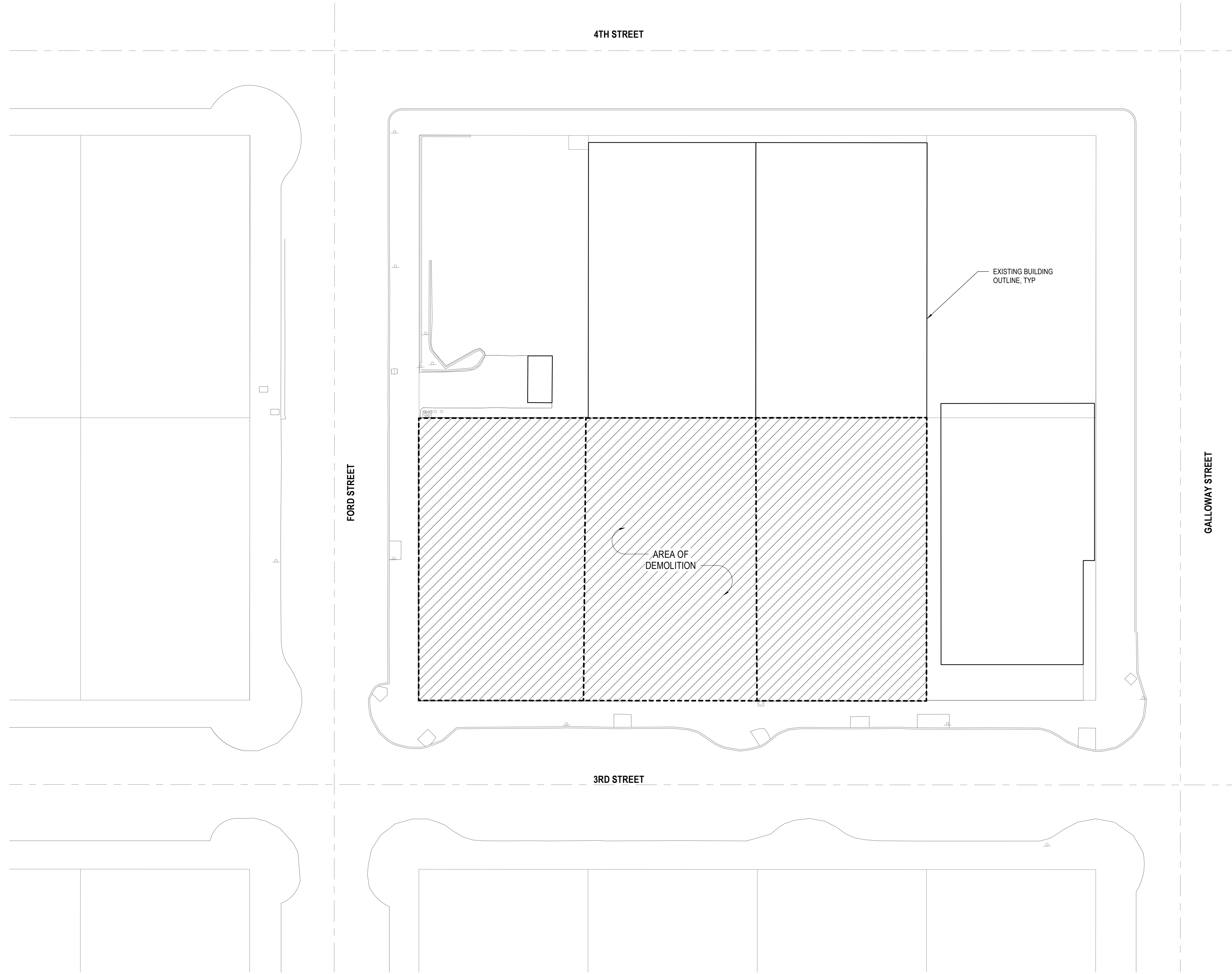
DATE DESCRIPTION

REVISIONS

Author	Checker
DRAWN BY	CHECK BY
LAND USE RE-SUBMITTAL	
STATUS	
11/04/2022	
DATE	
19914	
PROJECT NUMBER	

EX1.01

© 2022 OTAK, INC.
 If this drawing is not 24" x 36", it has been reduced/enlarged. Scale accordingly.



1 DEMO SITE PLAN
 SCALE: 1" = 20'-0"

STAMP

CONSULTANT

GWENDOLYN HOTEL
 609 NE 3RD STREET, 611 NE 3RD STREET, 619 NE 3RD STREET
 MCMINNVILLE, OREGON 97128

DEMO SITE PLAN

TITLE

DATE DESCRIPTION

REVISIONS

Author Checker
 DRAWN BY CHECK BY

LAND USE RE-SUBMITTAL

STATUS

11/04/2022

DATE

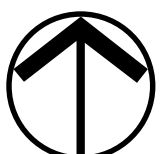
19914

PROJECT NUMBER

D1.01

© 2022 OTAK, INC.

If this drawing is not 24" x 36", it has been reduced/enlarged. Scale accordingly.



STAMP

CONSULTANT

GWENDOLYN HOTEL
609 NE 3RD STREET, 611 NE 3RD STREET, 619 NE 3RD STREET
MCMINNVILLE, OREGON 97128

CONTEXT ELEVATIONS

TITLE

DATE DESCRIPTION

REVISIONS

Author	Checker
DRAWN BY	CHECK BY
LAND USE RE-SUBMITTAL	STATUS
11/04/2022	DATE
19914	PROJECT NUMBER

A0.01

© 2022 OTAK, INC.
If this drawing is not 24" x 36", it has been reduced/enlarged. Scale accordingly.

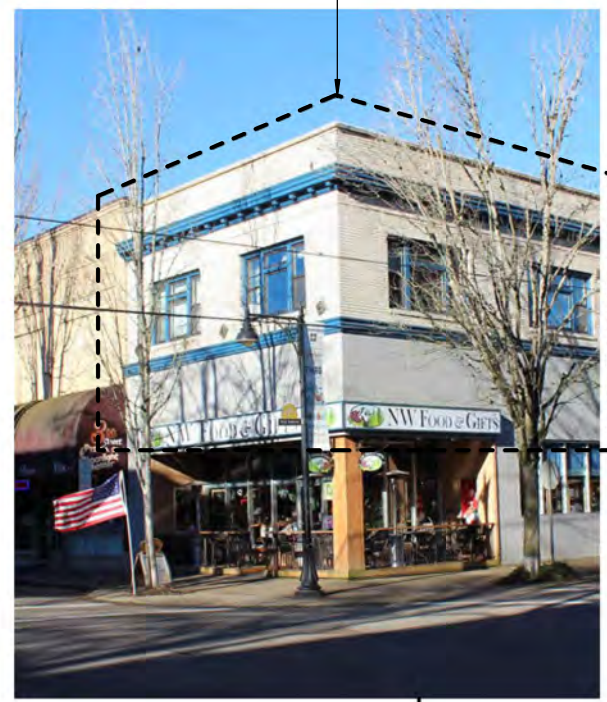
MONOCHROMATIC BUILDING PALETTE WITH COLORFUL GROUND LEVEL TREATMENTS



GROUPED UPPER WINDOWS



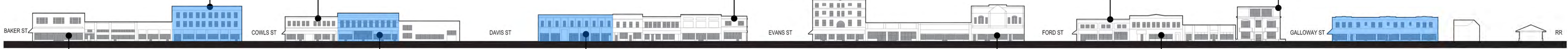
LIGHT COLORED BUILDING PALETTE WITH BOLD COLOR ACCENTS



STRONG DELINEATION OF BUILDING BASE



FABRIC AWNINGS WITH CONTRASTING COLOR



LEGEND

EXISTING BUILDINGS GREATER THAN 60 FEET WIDE

NORTH SIDE OF 3RD STREET

TRADITIONAL WOOD STOREFRONT DETAILING AND TRANSOM



CONTRASTING COLOR AT HEADER AND SILL BRICK DETAILS



GROUPED CORNICE BRACKETS



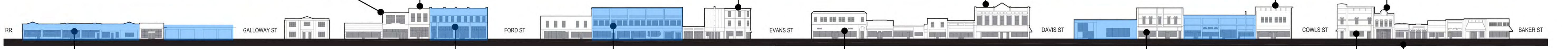
BRICK DETAILING AND RECESSES



BOLD CORNICE LINE



PLANTER BOXES AT UPPER WINDOWS



TRADITIONAL WOOD PILASTER DETAILING



2 STORY (35' HEIGHT) BUILDING SOUTH OF PROPERTY



USE OF COLOR TO DEFINE BUILDING BASE



DETAILS INCORPORATED INTO CORNICE CAP



USE OF BOLD COLOR AT PEDESTRIAN LEVEL



SOUTH SIDE OF 3RD STREET

Plot Date: 11/3/2022 10:18:15 AM

Revit File: A:\desk\Docs\19914 - Gwendolyn Hotel\19914-Gwendolyn Hotel-arch\A22.rvt

STAMP

CONSULTANT

GWENDOLYN HOTEL
 609 NE 3RD STREET, 611 NE 3RD STREET, 619 NE 3RD STREET
 MCMINNVILLE, OREGON 97128

SITE PLAN

TITLE

DATE DESCRIPTION

REVISIONS

Author Checker
 DRAWN BY CHECK BY

LAND USE RE-SUBMITTAL
 STATUS

11/04/2022

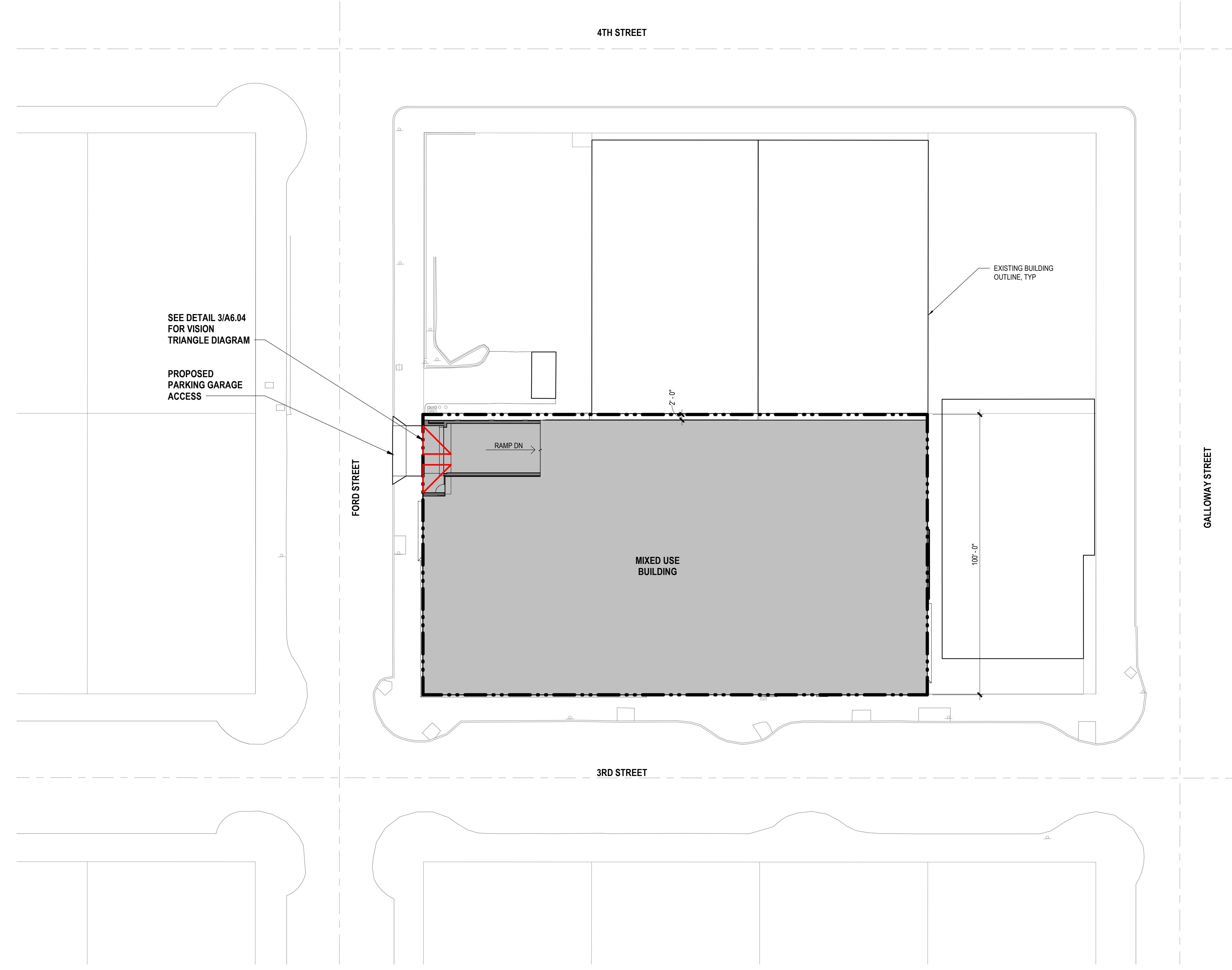
DATE

19914

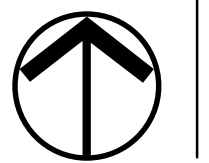
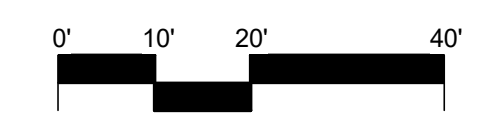
PROJECT NUMBER

A1.01

© 2022 OTAK, INC.
 If this drawing is not 24" x 36", it has been reduced/enlarged. Scale accordingly.



1 PROPOSED SITE PLAN
 A1.01 SCALE: 1" = 20'-0"



STAMP

CONSULTANT

GWENDOLYN HOTEL
609 NE 3RD STREET, 611 NE 3RD STREET, 619 NE 3RD STREET
MCMINNVILLE, OREGON 97128

FLOOR PLANS

TITLE

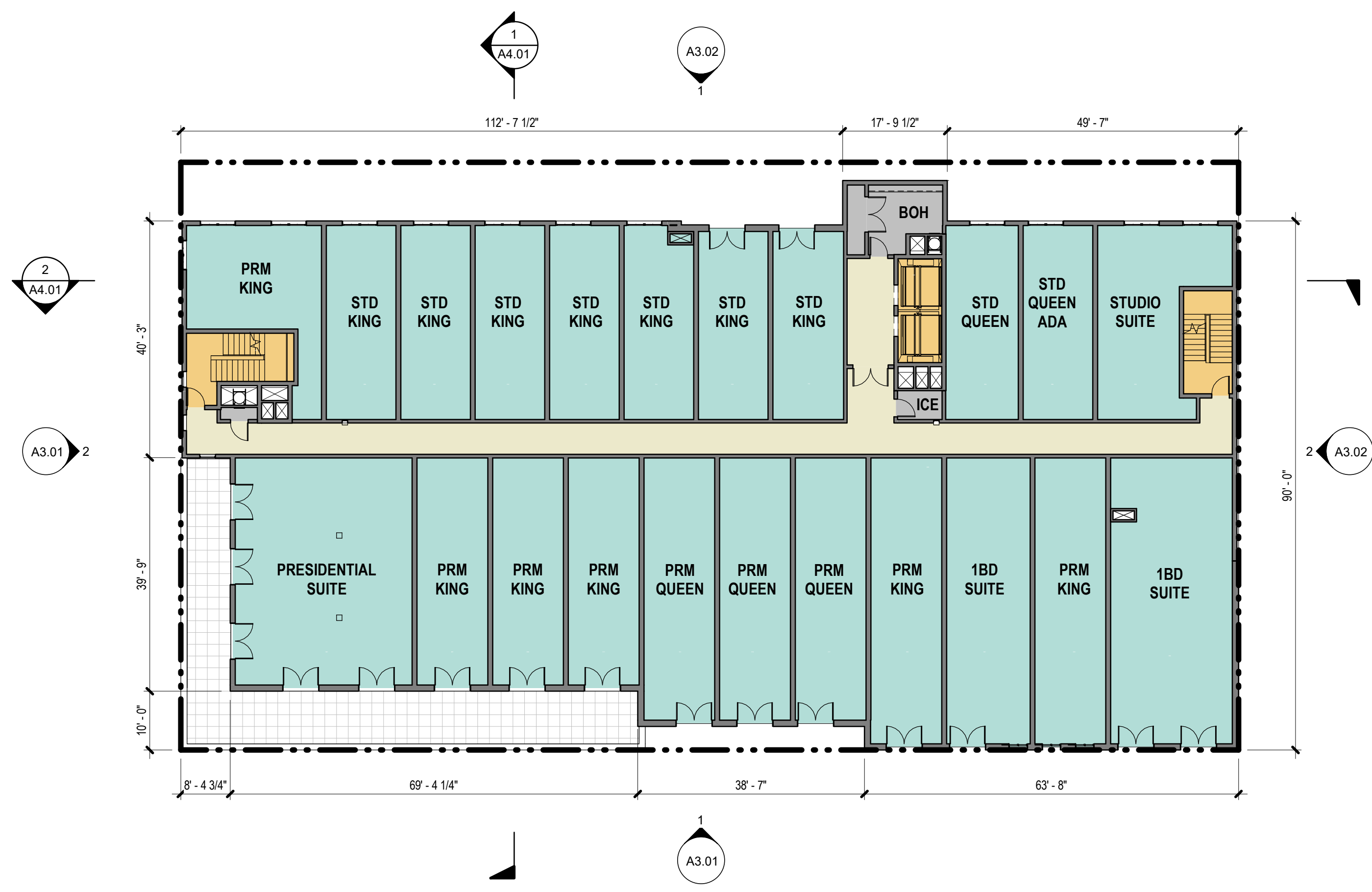
DATE DESCRIPTION

REVISIONS

Author	Checker
DRAWN BY	CHECK BY
LAND USE RE-SUBMITTAL STATUS	
11/04/2022	
DATE	
19914	
PROJECT NUMBER	

A2.01

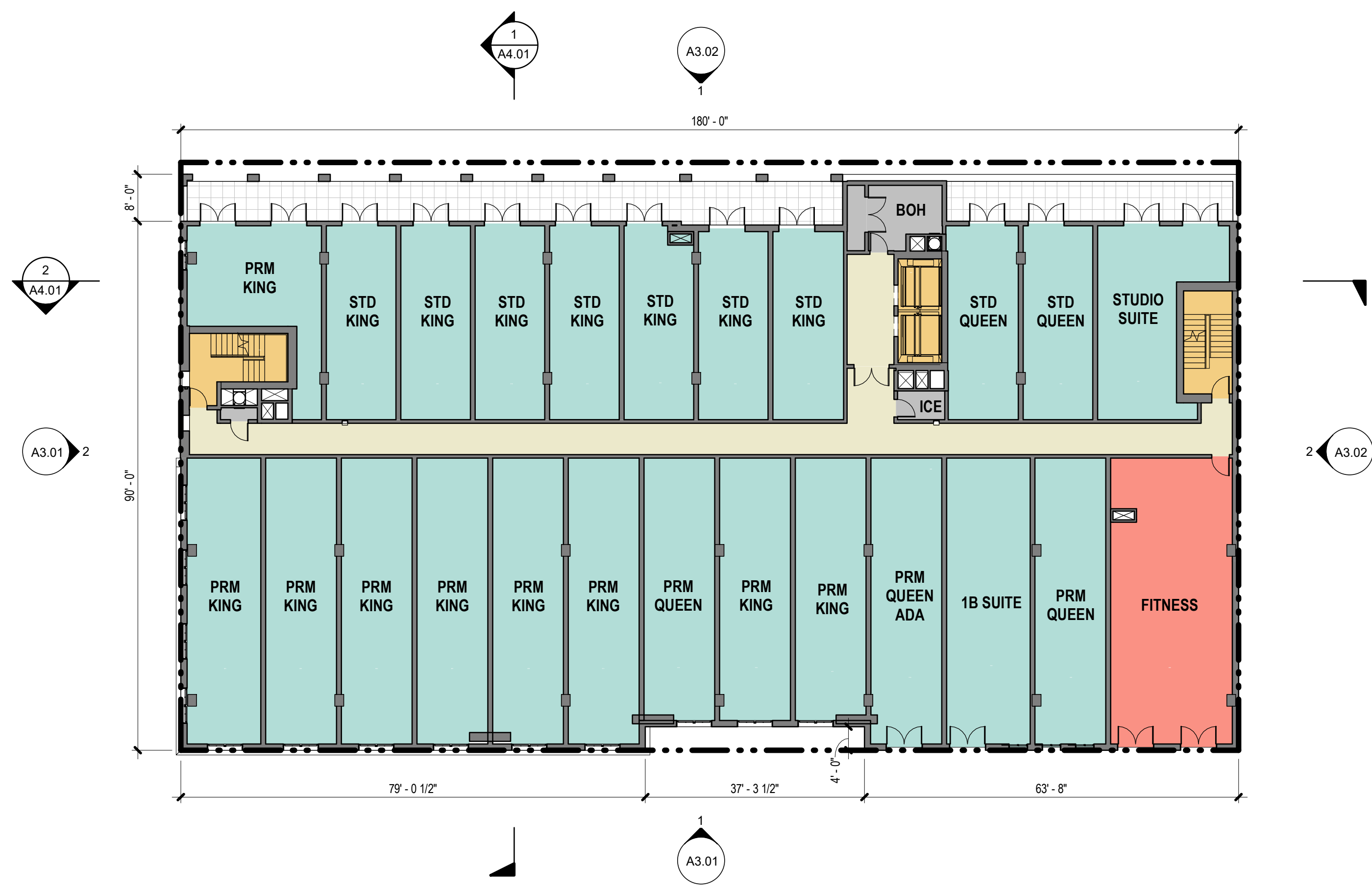
© 2022 OTAK, INC.
If this drawing is not 24" x 36", it has been reduced/enlarged. Scale accordingly.



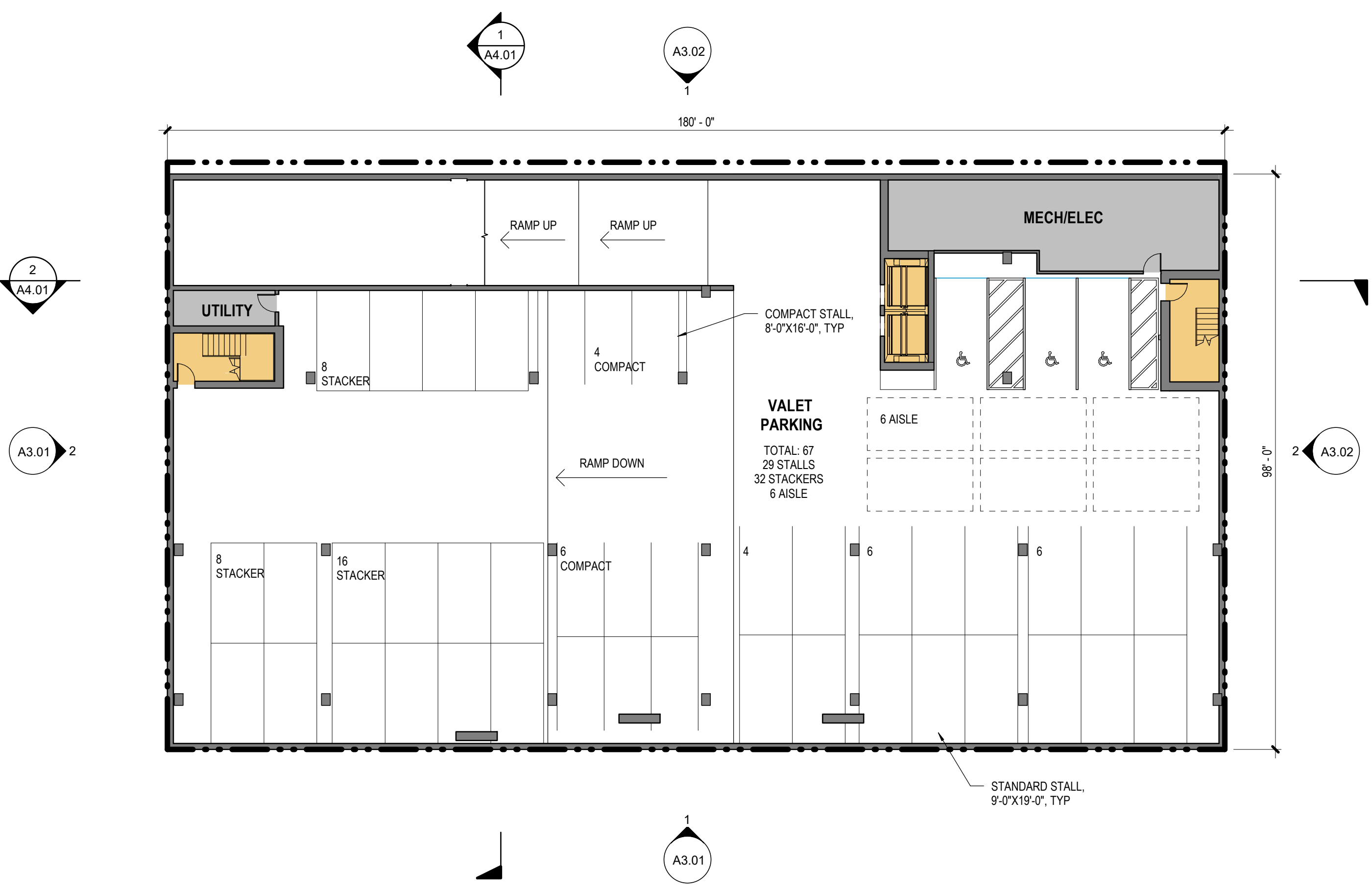
4 LEVEL 03 - FLOOR PLAN
A2.01 SCALE: 1/16" = 1'-0"



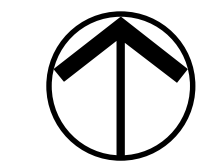
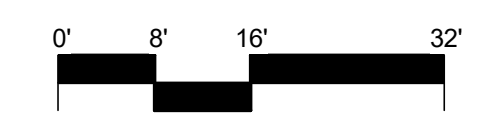
1 LEVEL 01 - FLOOR PLAN
A2.01 SCALE: 1/16" = 1'-0"



3 LEVEL 02 - FLOOR PLAN
A2.01 SCALE: 1/16" = 1'-0"



2 LEVEL B1 - FLOOR PLAN
A2.01 SCALE: 1/16" = 1'-0"



Revit File: A:\desk\Draws\19914 - Gwendolyn Hotel\19914-Gwendolyn Hotel-Arch\A2.01.rvt Plot Date: 11/3/2022 10:13:30 AM

STAMP

CONSULTANT

GWENDOLYN HOTEL
609 NE 3RD STREET, 611 NE 3RD STREET, 619 NE 3RD STREET
MCMINNVILLE, OREGON 97128

FLOOR PLANS

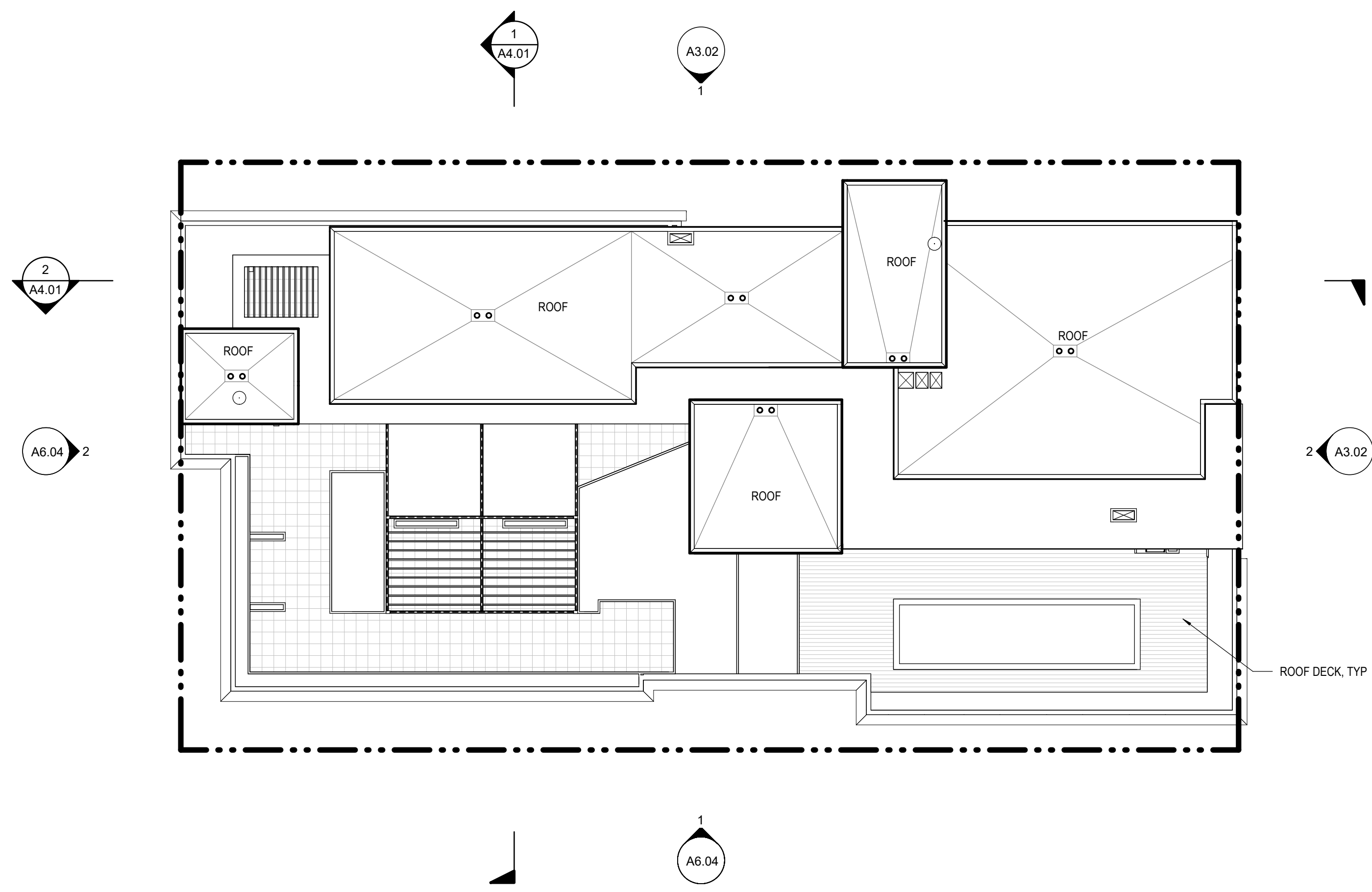
TITLE
DATE DESCRIPTION

REVISIONS

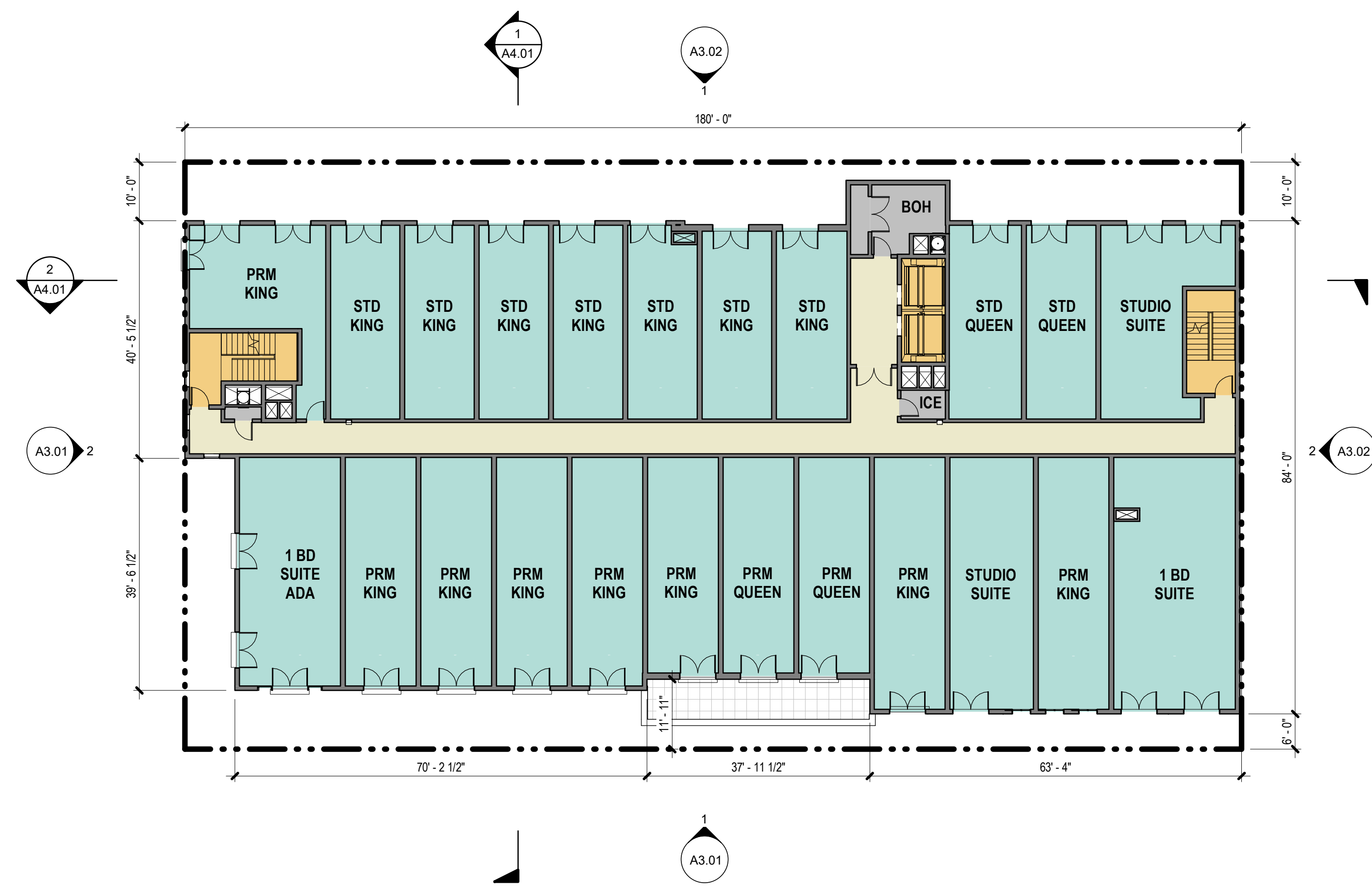
Author	Checker
DRAWN BY	CHECK BY
LAND USE RE-SUBMITTAL STATUS	
11/04/2022	
DATE	
19914	
PROJECT NUMBER	

A2.02

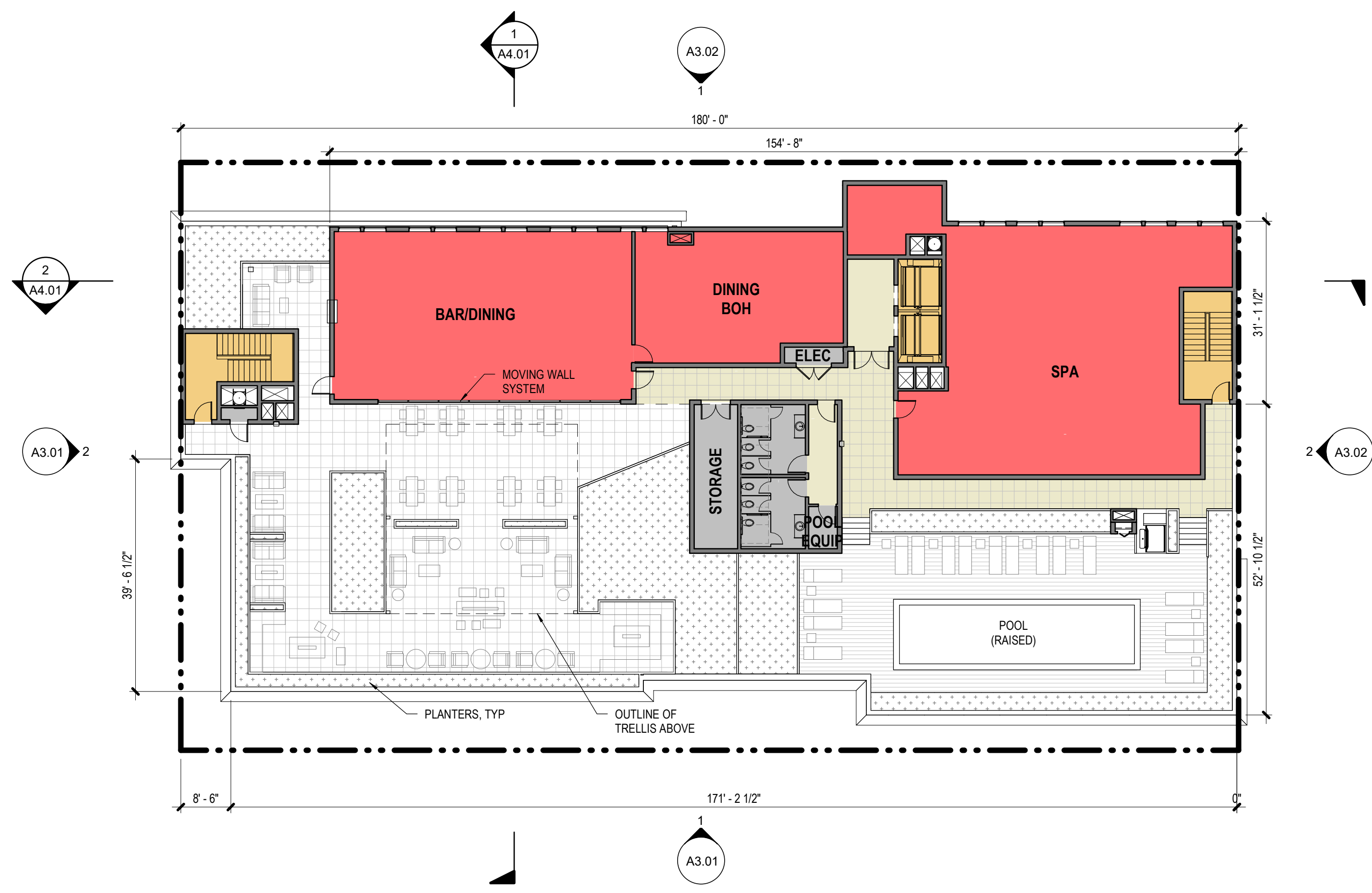
© 2022 OTAK, INC.
If this drawing is not 24" x 36", it has been reduced/enlarged. Scale accordingly.



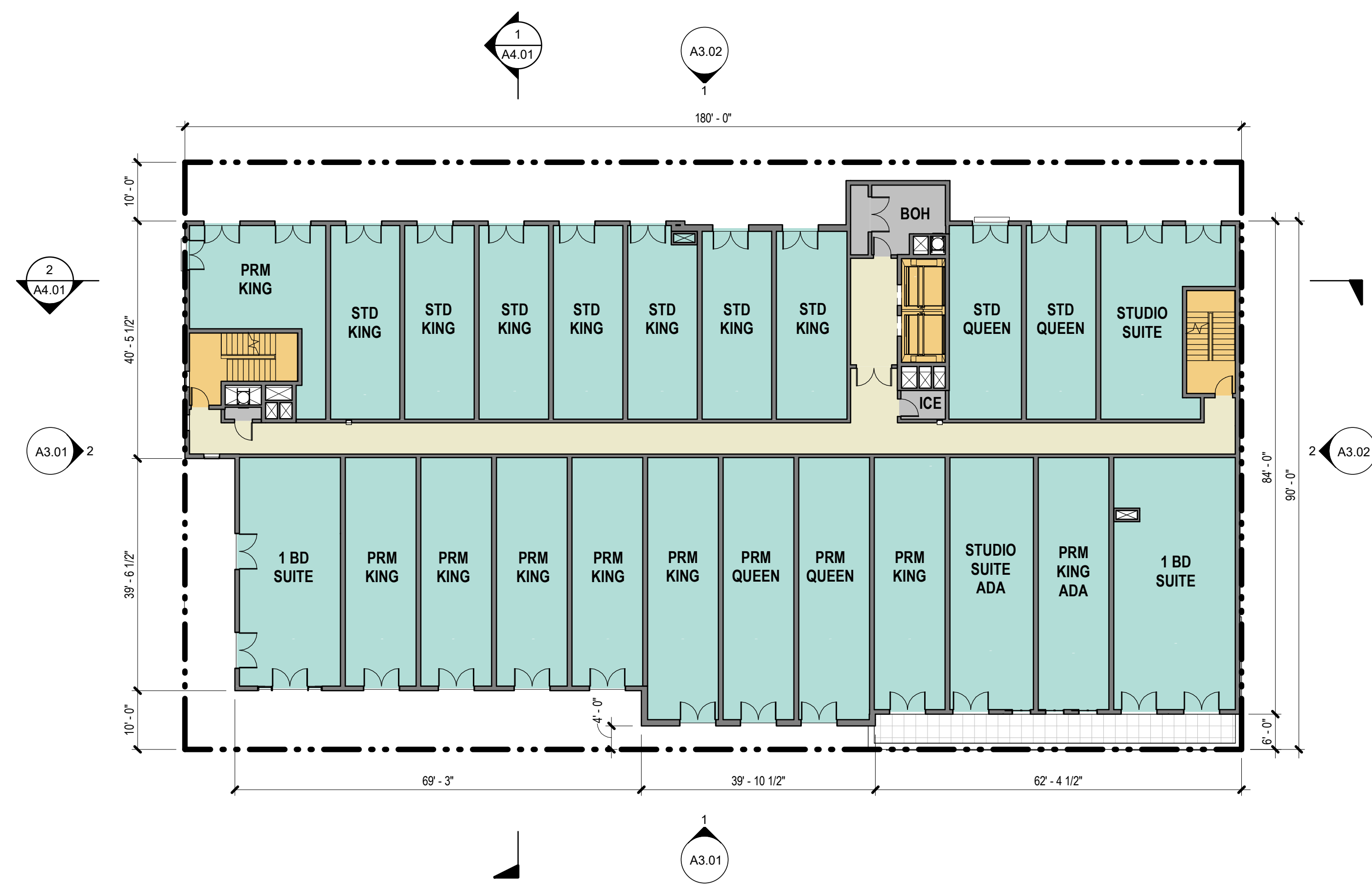
2 ROOF PLAN
A2.02 SCALE: 1/16" = 1'-0"



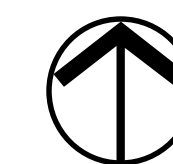
3 LEVEL 05 - FLOOR PLAN
A2.02 SCALE: 1/16" = 1'-0"



1 LEVEL 06/ROOF DECK - FLOOR PLAN
A2.02 SCALE: 1/16" = 1'-0"



4 LEVEL 04 - FLOOR PLAN
A2.02 SCALE: 1/16" = 1'-0"



Revit File: A:\desk\Docs\19914 - Gwendolyn Hotel\19914-Gwendolyn Hotel\Arch\A2.02.rvt Plot Date: 11/03/2022 10:13:32 AM

MATERIAL LEGEND

- BR-1 FACE BRICK - WIRECUT "WHITE"
- BR-2 FACE BRICK "TAN"
- BR-3 FACE BRICK - "DARK GREY"
- BR-4 FACE BRICK - "RED-BROWN"
- C-1 PRECAST CONCRETE PANEL "DARK GREY"
- PT-1 PAINTED COMPOSITE PANELING "DARK GREY"
- ST-1 STUCCO - SMOOTH TEXTURE "LIGHT GREY"
- ST-2 STUCCO - SMOOTH TEXTURE "MEDIUM GREY"
- ST-3 STUCCO - SMOOTH TEXTURE "DARK GREY"
- ST-4 STUCCO - SMOOTH TEXTURE "WHITE"
- ST-5 STUCCO - SMOOTH TEXTURE "TAN"
- ST-6 STUCCO - SMOOTH TEXTURE "RED-BROWN"



2 WEST - ELEVATION
A3.01 SCALE: 3/32" = 1'-0"

STOREFRONT GLAZING PERCENTAGE
BELOW TRANSOM LINE: 594 SF GLAZING / 834 SF WALL AREA = 70%
BELOW HORIZONTAL TRIM BAND TO TRANSOM LINE: 164 SF GLAZING / 398 SF WALL AREA = 41.2%

GWENDOLYN HOTEL
609 NE 3RD STREET, 611 NE 3RD STREET, 619 NE 3RD STREET
MCMINNVILLE, OREGON 97128

EXTERIOR ELEVATIONS

REVISIONS		
#	DATE	DESCRIPTION

19914
PROJECT NUMBER
A3.01
© 2022 OTAK, INC.
If this drawing is not 24" x 36", it has been reduced/enlarged. Scale accordingly.

Revit File: A:\bids\Docs\19914 - Gwendolyn Hotel\19914-Gwendolyn Hotel-Arch\A3.01.rvt Plot Date: 11/3/2022 10:18:23 AM



1 SOUTH - ELEVATION
A3.01 SCALE: 3/32" = 1'-0"

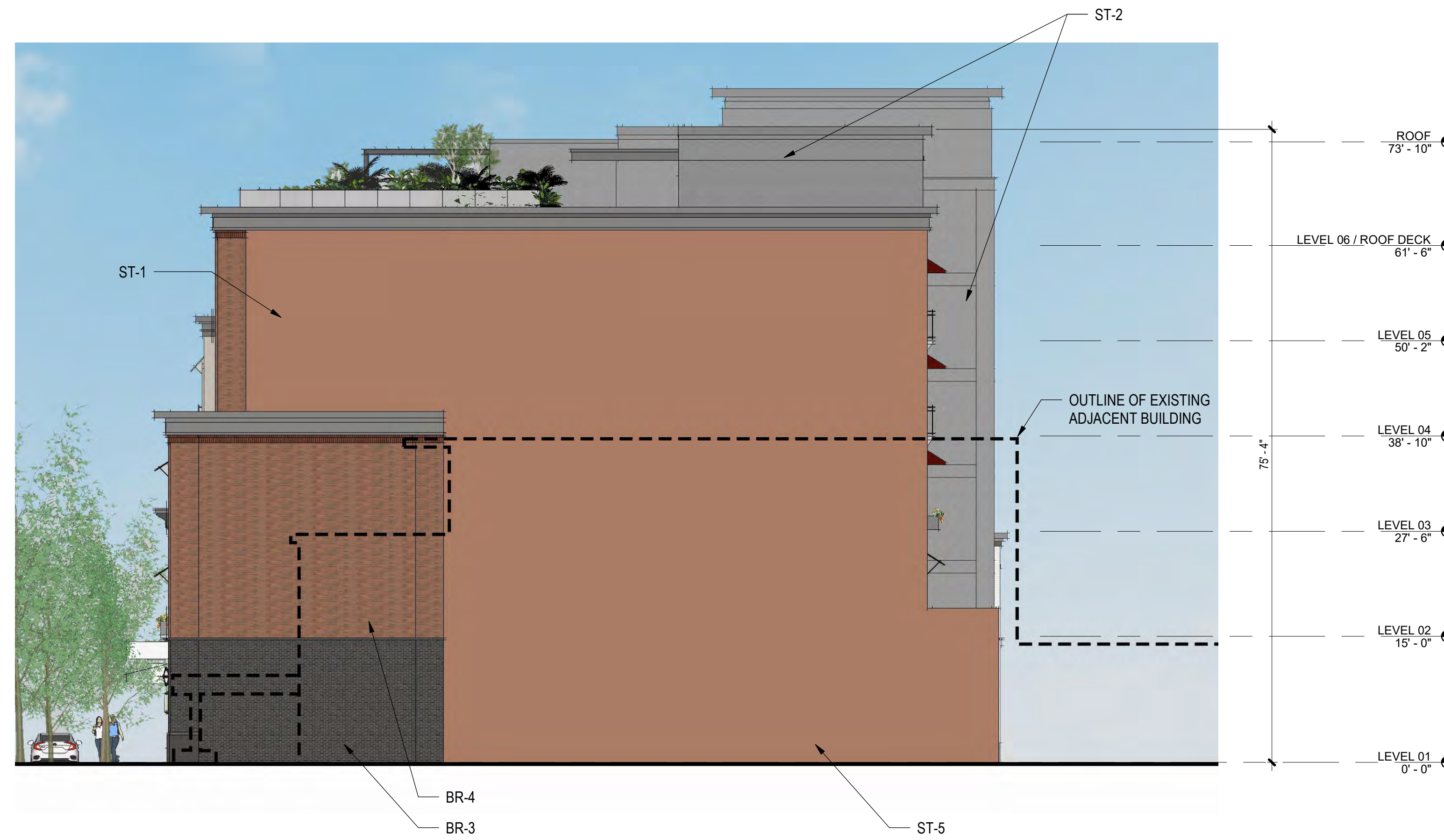
STOREFRONT GLAZING PERCENTAGE
BELOW TRANSOM LINE: 1,072 SF GLAZING / 1,530 SF WALL AREA = 70.1%
BELOW HORIZONTAL TRIM BAND TO TRANSOM LINE: 350 SF GLAZING / 840 SF WALL AREA = 41.7%

MATERIAL LEGEND

- BR-1 FACE BRICK - WIRECUT "WHITE"
- BR-2 FACE BRICK "TAN"
- BR-3 FACE BRICK - "DARK GREY"
- BR-4 FACE BRICK - "RED-BROWN"
- C-1 PRECAST CONCRETE PANEL "DARK GREY"
- PT-1 PAINTED COMPOSITE PANELING "DARK GREY"
- ST-1 STUCCO - SMOOTH TEXTURE "LIGHT GREY"
- ST-2 STUCCO - SMOOTH TEXTURE "MEDIUM GREY"
- ST-3 STUCCO - SMOOTH TEXTURE "DARK GREY"
- ST-4 STUCCO - SMOOTH TEXTURE "WHITE"
- ST-5 STUCCO - SMOOTH TEXTURE "TAN"
- ST-6 STUCCO - SMOOTH TEXTURE "RED-BROWN"

STAMP

CONSULTANT



2 EAST - ELEVATION
A3.02 SCALE: 3/32" = 1'-0"



1 NORTH - ELEVATION
A3.02 SCALE: 3/32" = 1'-0"

GWENDOLYN HOTEL
609 NE 3RD STREET, 611 NE 3RD STREET, 619 NE 3RD STREET
MCMINNVILLE, OREGON 97128

EXTERIOR ELEVATIONS

TITLE

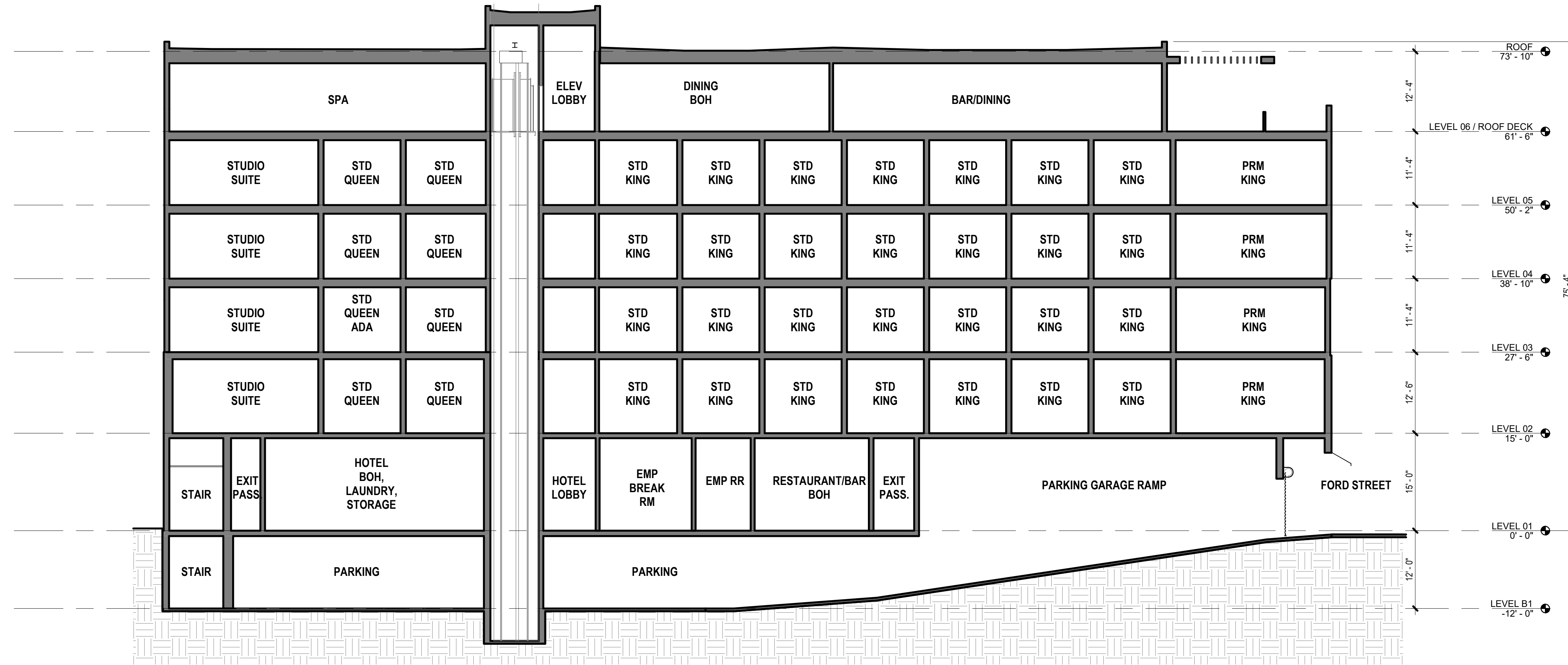
#	DATE	DESCRIPTION

REVISIONS

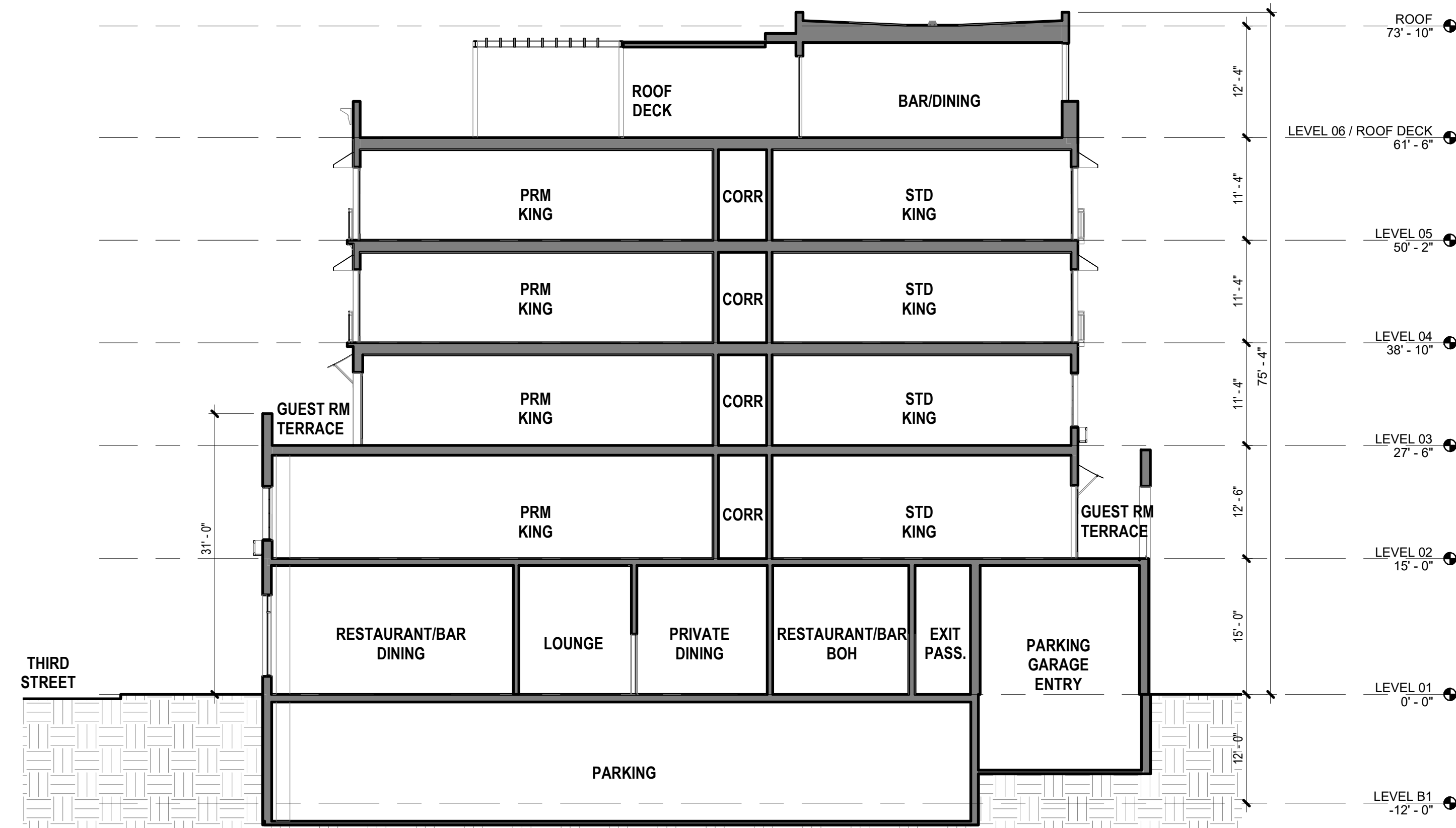
Author	Checker
DRAWN BY	CHECK BY
LAND USE RE-SUBMITTAL STATUS	
11/04/2022	
DATE	
19914	
PROJECT NUMBER	

A3.02

© 2022 OTAK, INC.
If this drawing is not 24" x 36", it has been reduced/enlarged. Scale accordingly.



2 EAST - WEST - SECTION
A4.01 SCALE: 3/32" = 1'-0"



1 NORTH - SOUTH - SECTION
A4.01 SCALE: 3/32" = 1'-0"

STAMP

CONSULTANT

GWENDOLYN HOTEL
609 NE 3RD STREET, 611 NE 3RD STREET, 619 NE 3RD STREET
MCMINNVILLE, OREGON 97128

BUILDING SECTIONS

TITLE

DATE DESCRIPTION

REVISIONS

Author Checker

DRAWN BY CHECK BY

LAND USE RE-SUBMITTAL

STATUS

11/04/2022

DATE

19914

PROJECT NUMBER

A4.01

© 2022 OTAK, INC.
If this drawing is not 24" x 36", it has been reduced/enlarged. Scale accordingly.

STAMP

CONSULTANT

GWENDOLYN HOTEL
609 NE 3RD STREET, 611 NE 3RD STREET, 619 NE 3RD STREET
MCMINNVILLE, OREGON 97128

BUILDING EXTERIORS

TITLE

DATE DESCRIPTION

REVISIONS

Author	Checker
DRAWN BY	CHECK BY
LAND USE RE-SUBMITTAL STATUS	
11/04/2022	
DATE	
19914	
PROJECT NUMBER	

A6.01

© 2022 OTAK, INC.
If this drawing is not 24" x 36", it has been reduced/enlarged. Scale accordingly.



HOLLOW METAL DOORS

PICTURE WINDOW

PAINTED COMPOSITE PANELING, PT-1

LIGHT FIXTURE

STUCCO, ST-2

MOVING GLASS SYSTEM

JULIETTE BALCONY, STYLE 1

STUCCO, ST-1

FABRIC AWNING, STYLE 2

ALUMINUM CLAD WOOD DOORS WITH DIVIDED LITES

FACE BRICK, BR-1

ALUMINUM CLAD WOOD WINDOWS WITH DIVIDED LITES

PLANTER BOX

STOREFRONT SYSTEM

STUCCO TRIM

ENLARGED PARTIAL ELEVATION - 3RD STREET

SCALE: 3/16" = 1'-0"



CORNICE, PAINTED

STUCCO TRIM, ST-1

CORNICE, PAINTED

SOLDIER COURSE, BR-1

PRECAST TRIM

AXONOMETRIC - CORNER OF 3RD AND FORD



ELEVATION KEY PLAN

STAMP

CONSULTANT

GWENDOLYN HOTEL
609 NE 3RD STREET, 611 NE 3RD STREET, 619 NE 3RD STREET
MCMINNVILLE, OREGON 97128

BUILDING EXTERIORS

TITLE

#	DATE	DESCRIPTION

REVISIONS

Author	Checker

DRAWN BY	CHECK BY

LAND USE RE-SUBMITTAL
STATUS

11/04/2022
DATE

19914
PROJECT NUMBER

A6.02

© 2022 OTAK, INC.
If this drawing is not 24" x 36", it has been reduced/enlarged. Scale accordingly.



ENLARGED PARTIAL ELEVATION - 3RD STREET

SCALE: 3/16" = 1'-0"

ALUMINUM CLAD
WOOD DOORS WITH
DIVIDED LITES

TILE ACCENT,
STYLE 1

ALUMINUM CLAD
WOOD WINDOWS
WITH DIVIDED LITES

LIGHT FIXTURE

PAINTED COMPOSITE
PANELING, PT-1

STUCCO, ST-2

STUCCO, ST-3

FACE BRICK, BR-4

FABRIC AWNING, STYLE 2

JULIETTE BALCONY,
STYLE 2

PLANTER BOX

FACE BRICK, BR-2

STOREFRONT SYSTEM

PRECAST CONCRETE, C-1



AXONOMETRIC - MID-BLOCK

CORNICE, PAINTED

CORNICE, PAINTED

CORNICE, PAINTED

SOLDIER COURSE, BR-4

CORNICE, PAINTED

SOLDIER COURSE,
BR-3

FACE BRICK,
BR-4

ROWLOCK COURSE,
BR-3



ELEVATION KEY PLAN

STAMP

CONSULTANT

GWENDOLYN HOTEL
609 NE 3RD STREET, 611 NE 3RD STREET, 619 NE 3RD STREET
MCMINNVILLE, OREGON 97128

BUILDING EXTERIORS

TITLE

#	DATE	DESCRIPTION

REVISIONS

Author	Checker
DRAWN BY	CHECK BY
LAND USE RE-SUBMITTAL	
STATUS	
11/04/2022	
DATE	
19914	
PROJECT NUMBER	

A6.03

© 2022 OTAK, INC.
If this drawing is not 24" x 36", it has been reduced/enlarged. Scale accordingly.



ENLARGED PARTIAL ELEVATION - 3RD STREET

SCALE: 3/16" = 1'-0"

CLERESTORY WINDOWS

STUCCO, ST-2

JULIETTE BALCONY, STYLE 3

TILE ACCENT, STYLE 2

LIGHT FIXTURE

STOREFRONT SYSTEM

PAINTED COMPOSITE PANELING, PT-1

GLASS RAILING

HOLLOW METAL DOOR

FABRIC AWNING, STYLE 2

ALUMINUM CLAD WOOD DOORS WITH DIVIDED LITES

FACE BRICK, BR-4

FABRIC AWNING, STYLE 1

FACE BRICK, BR-3

PRECAST CONCRETE, C-2



AXONOMETRIC - 3RD STREET

CORNICE, PAINTED

SOLDIER COURSE, BR-4

PRECAST TRIM

CORNICE, PAINTED

PILASTERS, BR-4

PILASTERS, BR-3



ELEVATION KEY PLAN



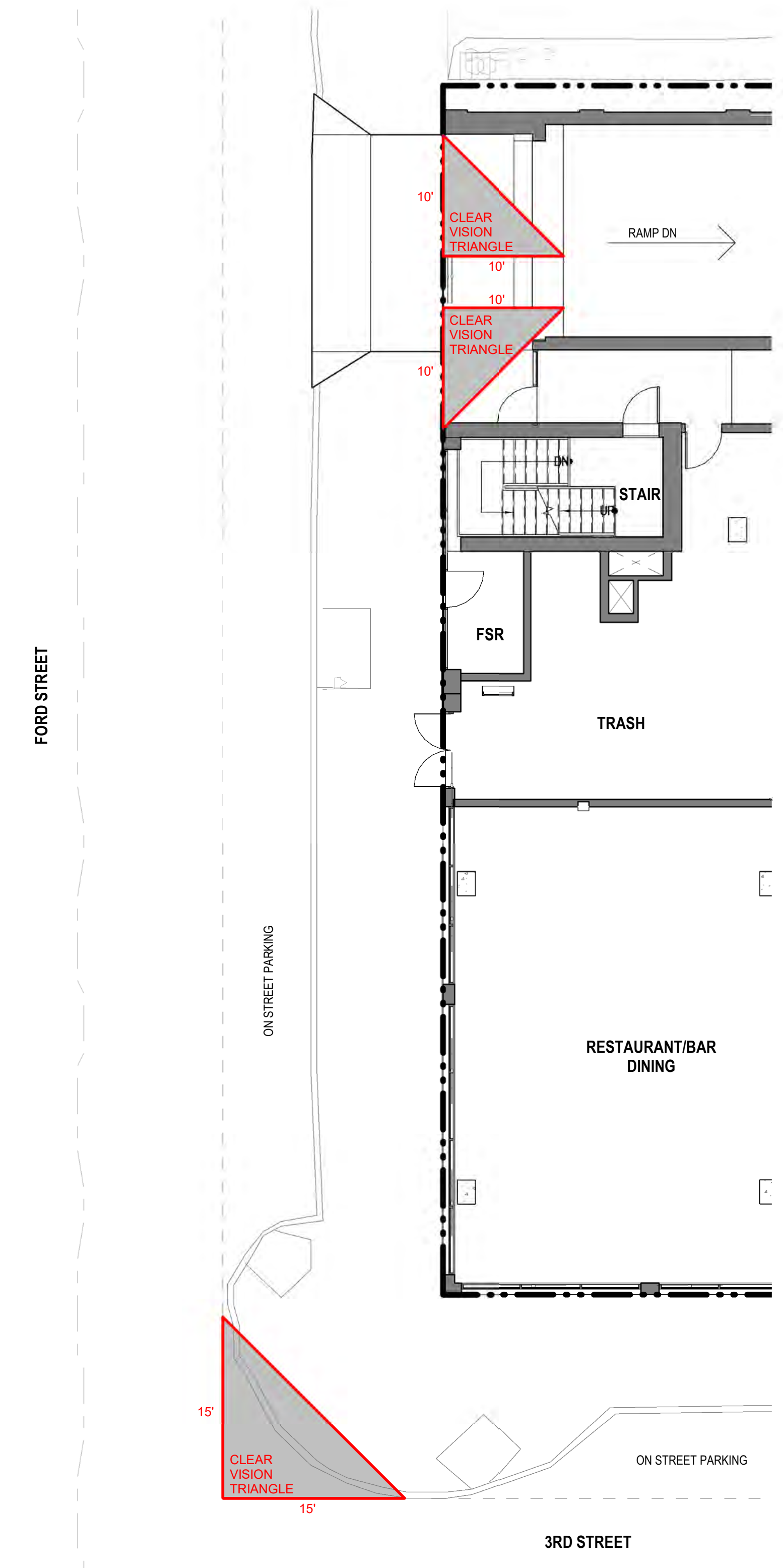
SIGHT LINE FROM 3RD STREET SIDEWALK

SCALE: 3/16" = 1'-0"



SIGHT LINE FROM FORD STREET SIDEWALK

SCALE: 3/16" = 1'-0"



PROPOSED SITE PLAN - VISION TRIANGLE

SCALE: 1/8" = 1'-0"

STAMP

CONSULTANT

GWENDOLYN HOTEL
609 NE 3RD STREET, 611 NE 3RD STREET, 619 NE 3RD STREET
MCMINNVILLE, OREGON 97128

SIGHT LINES

TITLE

#	DATE	DESCRIPTION

REVISIONS

Author	Checker

DRAWN BY	CHECK BY

LAND USE RE-SUBMITTAL

STATUS

11/04/2022

DATE

19914

PROJECT NUMBER

A6.04

© 2022 OTAK, INC.

If this drawing is not 24" x 36", it has been reduced/enlarged. Scale accordingly.

STAMP

CONSULTANT

GWENDOLYN HOTEL
609 NE 3RD STREET, 611 NE 3RD STREET, 619 NE 3RD STREET
MCMINVILLE, OREGON 97128

MATERIALS BOARD

TITLE

#	DATE	DESCRIPTION

REVISIONS

Author	Checker

DRAWN BY	CHECK BY

LAND USE RE-SUBMITTAL STATUS

DATE
11/04/2022

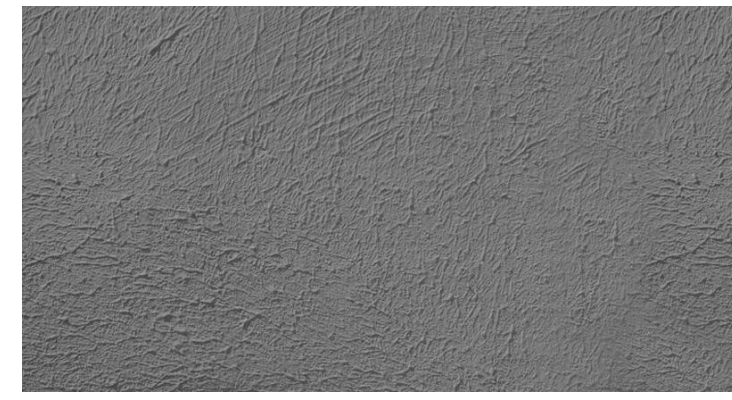
PROJECT NUMBER
19914

A6.05

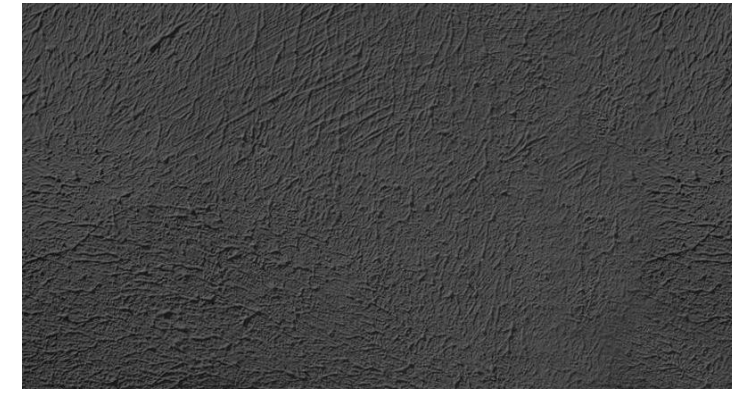
© 2022 OTAK, INC.
If this drawing is not 24" x 36", it has been reduced/enlarged. Scale accordingly.



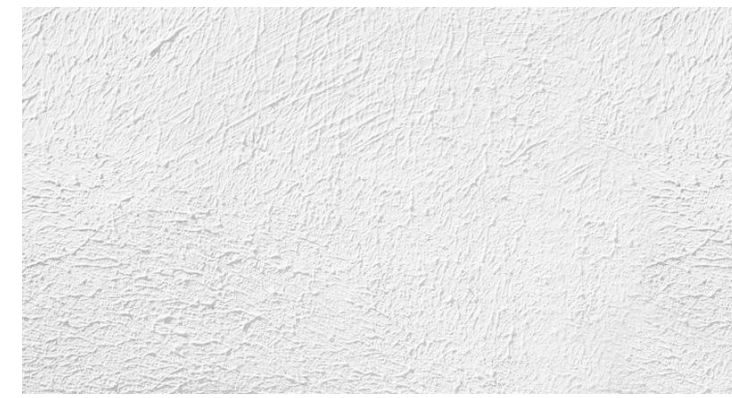
ST-1
STUCCO
"LIGHT GREY"



ST-2
STUCCO
"MEDIUM GREY"



ST-3
STUCCO
"DARK GREY"



ST-4
STUCCO
"WHITE"



ST-5
STUCCO
"TAN"



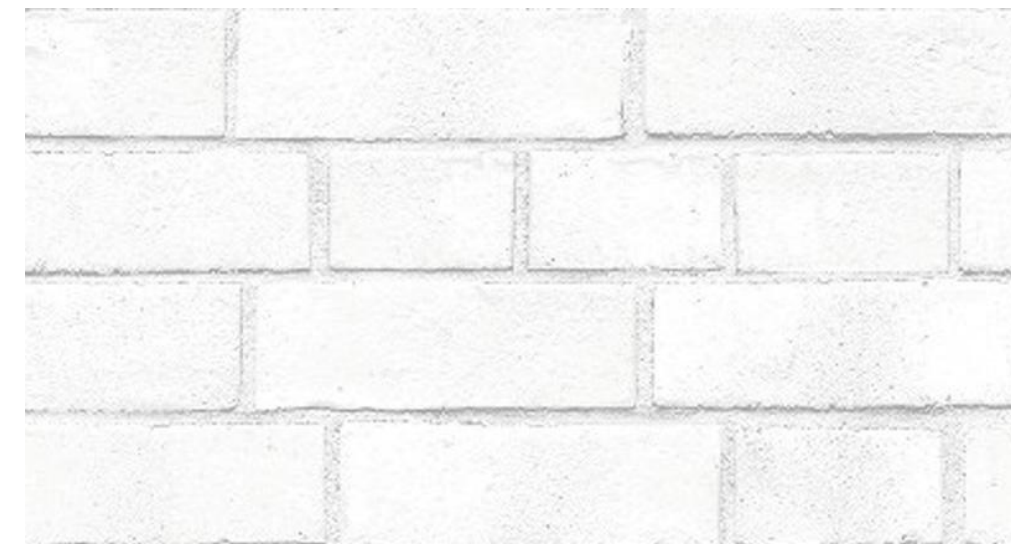
ST-6
STUCCO
"RED-BROWN"



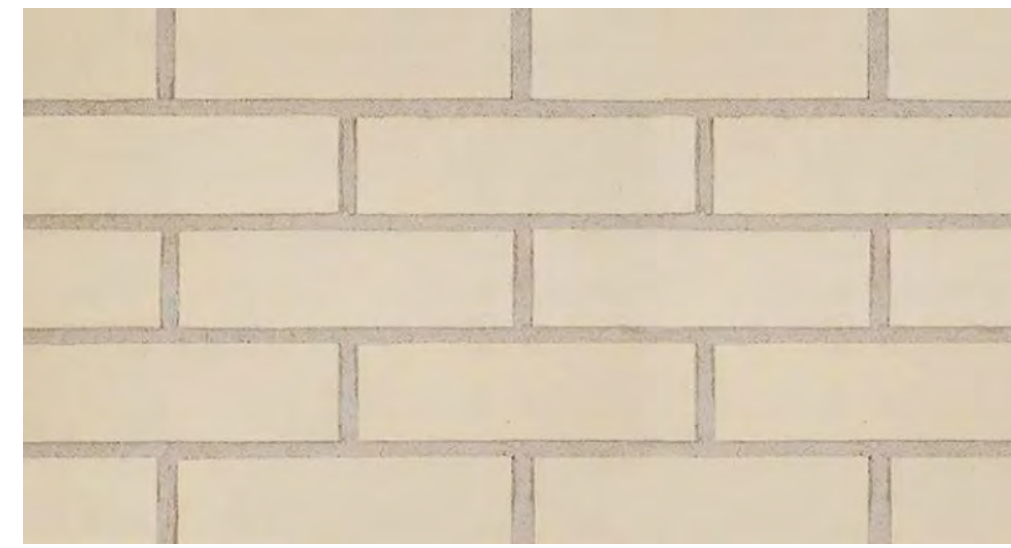
PT-1
PAINTED COMPOSITE PANELING
"DARK GREY"



C-1
PRECAST CONCRETE
"DARK GREY"



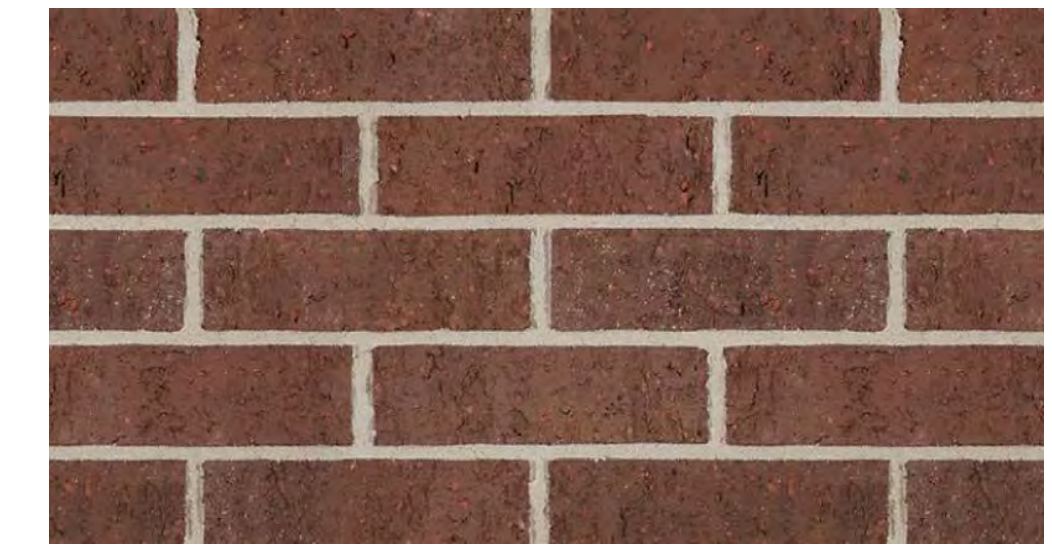
BR-1
FACE BRICK - "WHITE"



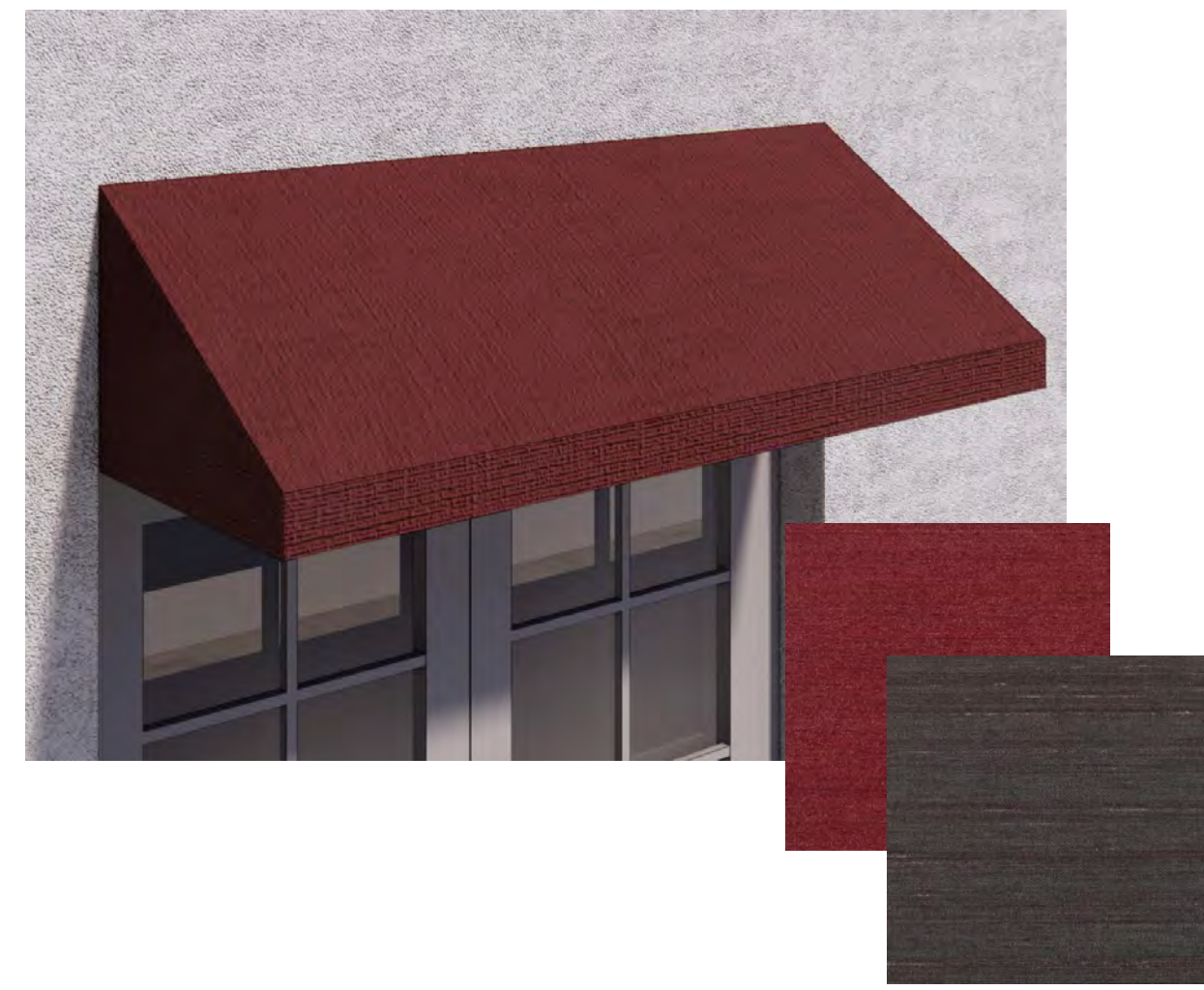
BR-2
FACE BRICK - "TAN"



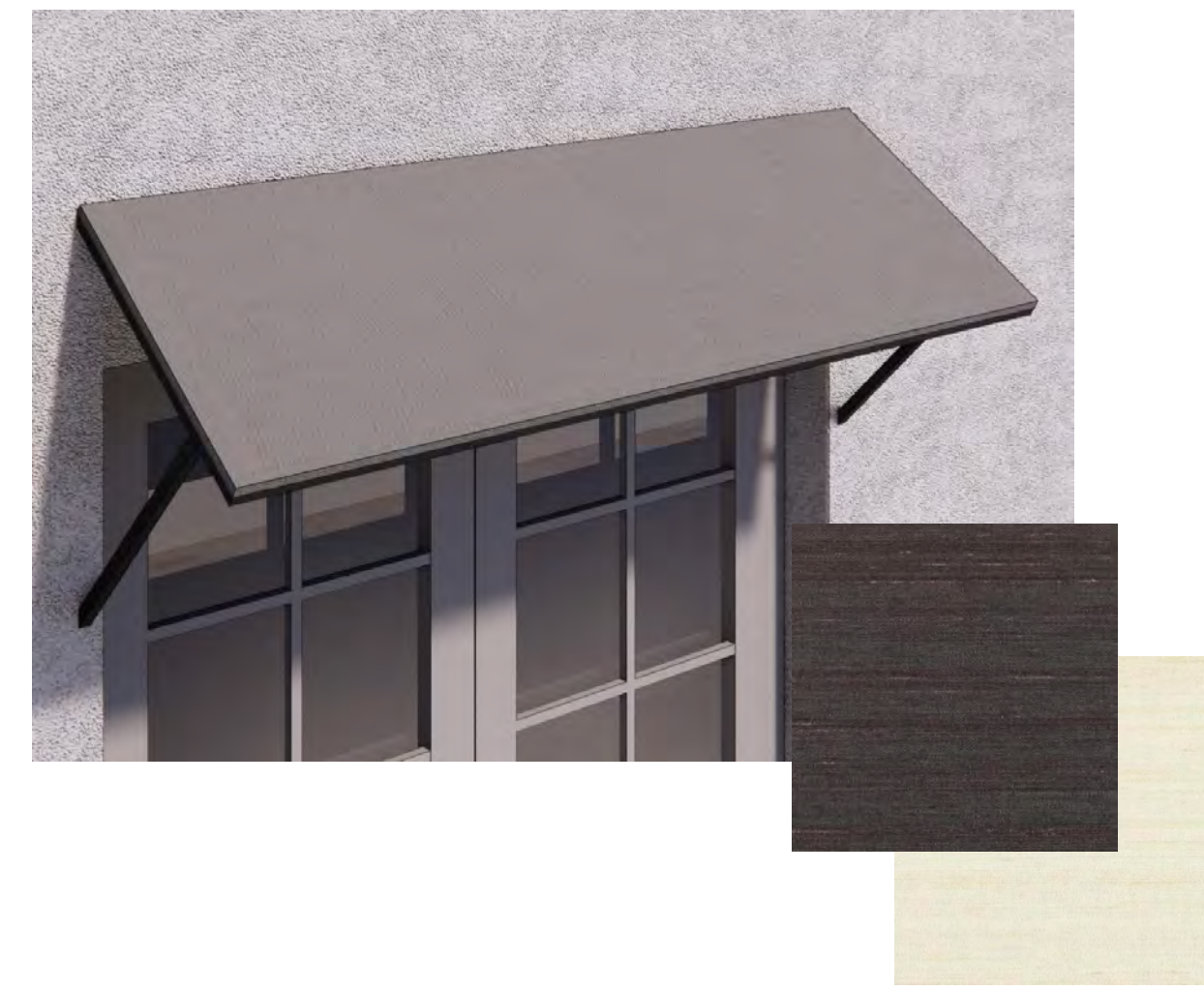
BR-3
FACE BRICK - "DARK GREY"



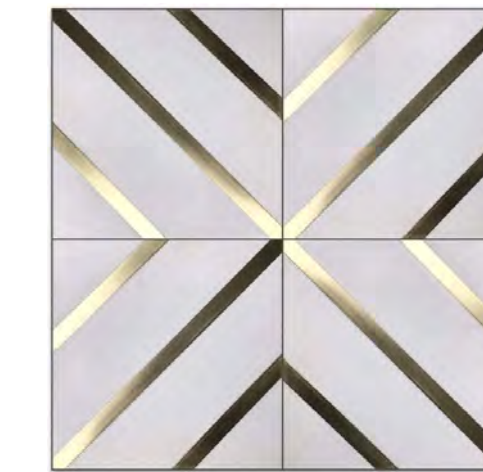
BR-4
FACE BRICK - "RED BROWN"



FABRIC AWNING, STYLE 1



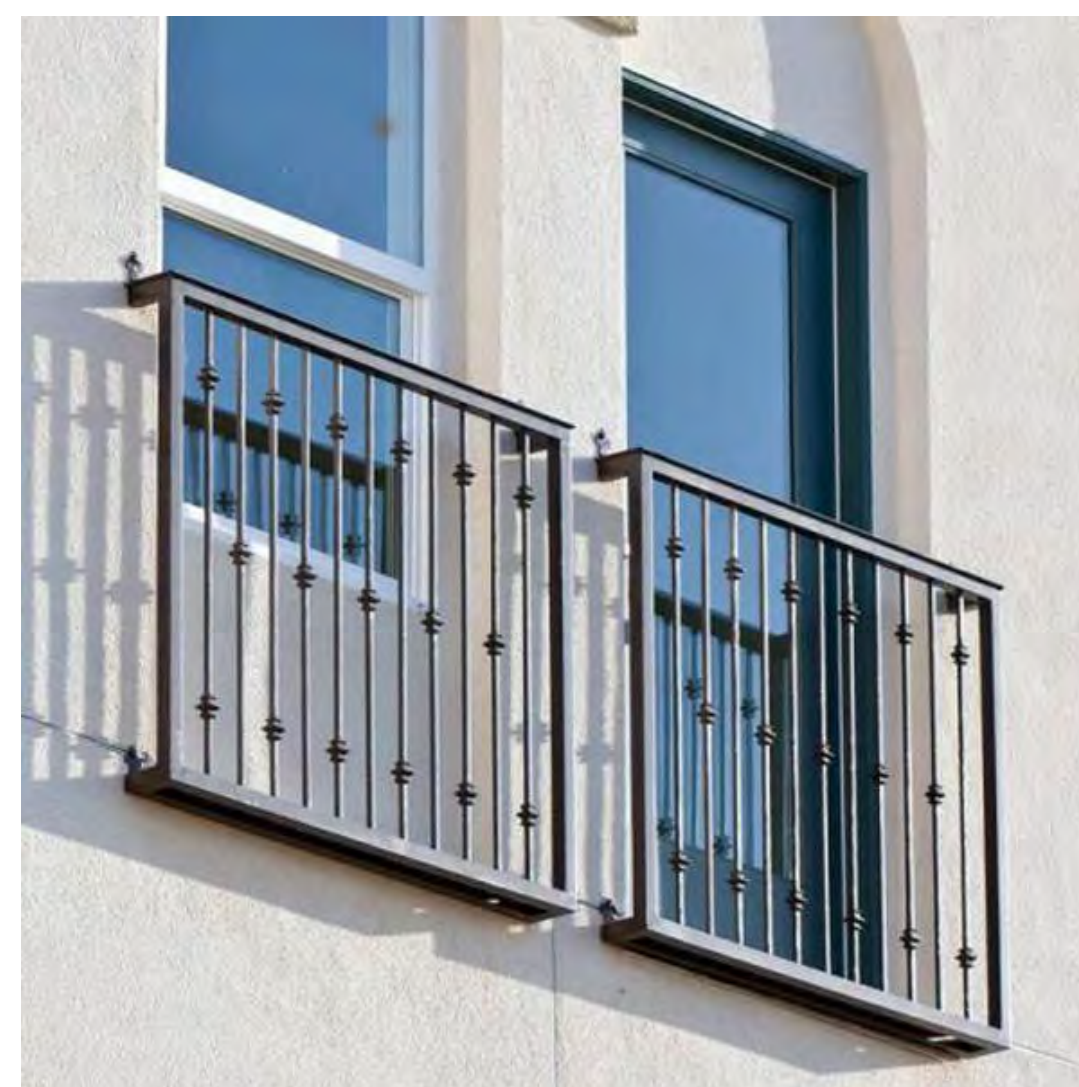
FABRIC AWNING, STYLE 2



TILE ACCENT, STYLE 1



TILE ACCENT, STYLE 2



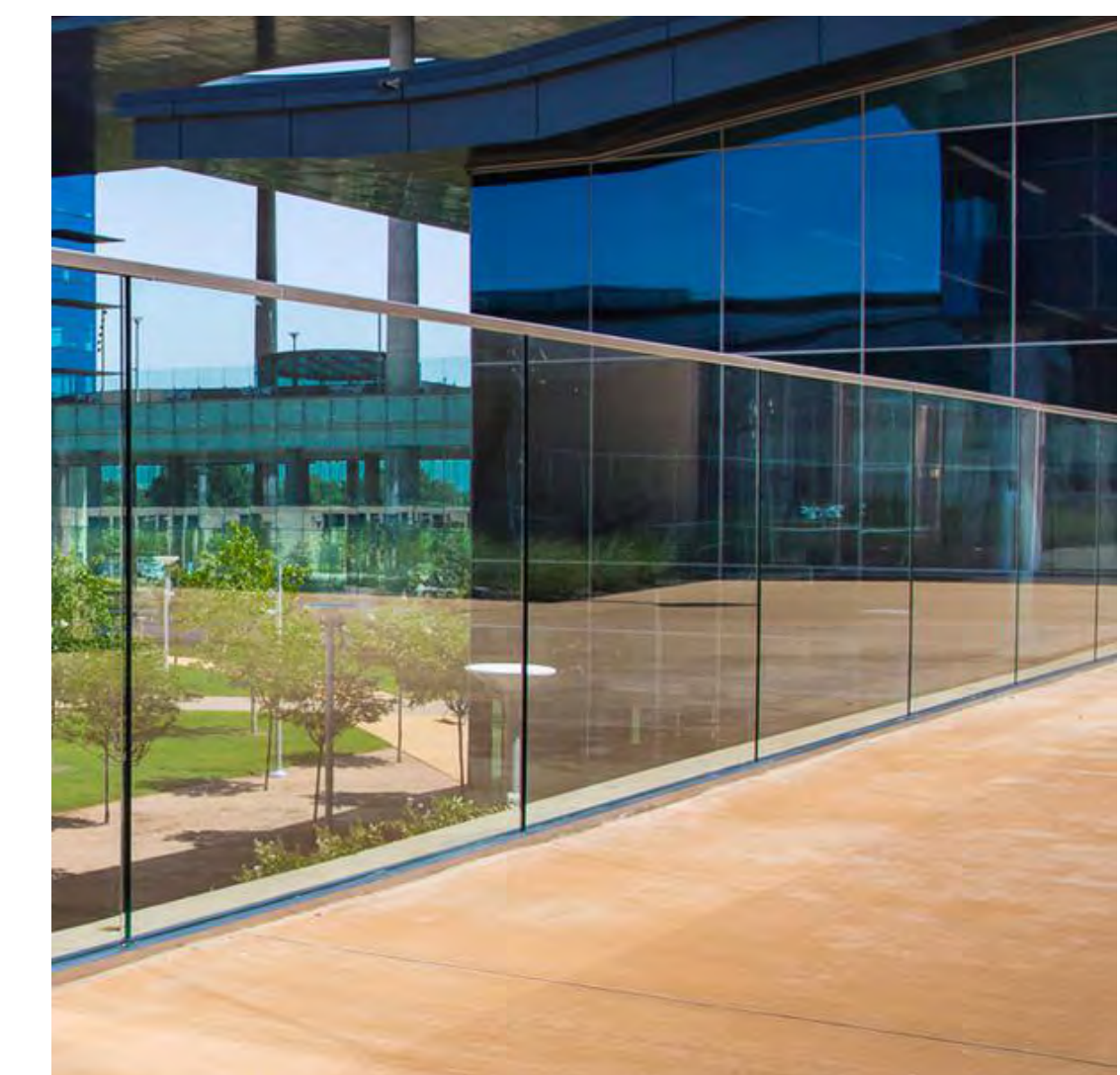
JULIETTE BALCONY, STYLE 1
RAILING FINISH: 'BLACK'



JULIETTE BALCONY, STYLE 2
RAILING FINISH: 'BLACK'



JULIETTE BALCONY, STYLE 3
RAILING FINISH: 'BLACK'



GLASS GUARDRAIL



VIEW OF GWENDOLYN HOTEL FROM FORD ST AND 3RD STREET

STAMP

CONSULTANT

GWENDOLYN HOTEL
 609 NE 3RD STREET, 611 NE 3RD STREET, 619 NE 3RD STREET
 MCMINNVILLE, OREGON 97128

PERSPECTIVE - RENDERED

TITLE

#	DATE	DESCRIPTION

REVISIONS

Author	Checker

DRAWN BY	CHECK BY

LAND USE RE-SUBMITTAL

STATUS

11/04/2022

DATE

19914

PROJECT NUMBER

A7.01



STAMP

CONSULTANT

GWENDOLYN HOTEL
 609 NE 3RD STREET, 611 NE 3RD STREET, 619 NE 3RD STREET
 MCMINNVILLE, OREGON 97128

PERSPECTIVES

TITLE

#	DATE	DESCRIPTION

REVISIONS

Author	Checker

DRAWN BY	CHECK BY

LAND USE RE-SUBMITTAL
 STATUS

11/04/2022
 DATE

19914
 PROJECT NUMBER

MID-BLOCK STREET PERSPECTIVE ALONG 3RD STREET

A7.02

STAMP

CONSULTANT

GWENDOLYN HOTEL
 609 NE 3RD STREET, 611 NE 3RD STREET, 619 NE 3RD STREET
 MCMINNVILLE, OREGON 97128

PERSPECTIVES

TITLE

DATE DESCRIPTION

REVISIONS

Author Checker

DRAWN BY CHECK BY

LAND USE RE-SUBMITTAL

STATUS

11/04/2022

DATE

19914

PROJECT NUMBER

A7.03

© 2022 OTAK, INC.
 If this drawing is not 24" x 36", it has been reduced/enlarged. Scale accordingly.



EAST END STREET PERSPECTIVE ALONG 3RD STREET



STREET PERSPECTIVE LOOKING SOUTH ON FORD STREET

STAMP

CONSULTANT



STREET PERSPECTIVE ALONG FORD STREET



PERSPECTIVE AT CORNER OF 3RD AND FORD

GWENDOLYN HOTEL
 609 NE 3RD STREET, 611 NE 3RD STREET, 619 NE 3RD STREET
 MCMINNVILLE, OREGON 97128

PERSPECTIVES

TITLE

#	DATE	DESCRIPTION

REVISIONS

Author	Checker
DRAWN BY	CHECK BY
LAND USE RE-SUBMITTAL	STATUS
11/04/2022	DATE
19914	PROJECT NUMBER

A7.04

© 2022 OTAK, INC.
 If this drawing is not 24" x 36", it has been reduced/enlarged. Scale accordingly.

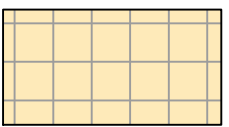



STAMP

CONSULTANT

GWENDOLYN HOTEL
609 NE 3RD STREET, 611 NE 3RD STREET, 619 NE 3RD STREET
MCMINNVILLE, OREGON 97128

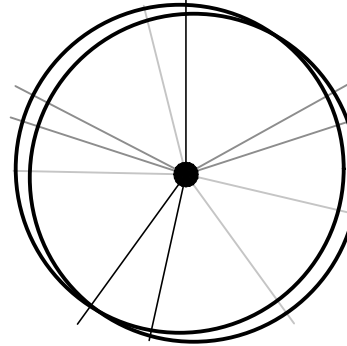
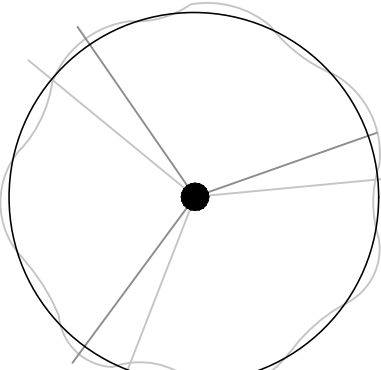
LANDSCAPE PLAN

LEGEND

-  ROOF DECK PAVERS
-  POOL/SPA AREA
-  ROOF LANDSCAPE AREA (SEE PRELIMINARY PLANT LIST)
-  SITE GROUNDCOVER PLANTINGS (SEE PRELIMINARY PLANT LIST)

PRELIMINARY STREET TREE LIST

TREES QTY BOTANICAL / COMMON NAME CONT CAL

- | | | | | |
|---|---|--|-----|----|
|  | 5 | ACER GRISEUM 'JFS KW8AGRI' TM
FIREBURST PAPERBARK MAPLE | B&B | 2" |
|  | 1 | ZELKOVA SERRATA 'JFS-KW1' TM
CITY SPRITE ZELKOVA | B&B | 2" |

PRELIMINARY PLANT LIST

SHRUBS AND ACCENT PLANTS:

- DOUGLAS SPIREA
SPIRAEA DOUGLASII
- MOON BAY NANDINA
NANDINA DOMESTICA 'MOON BAY'
- SHRUBBY CINQUEFOIL
POTENTILLA FRUTICOSA
- CRETAN ROCK ROSE
CISTUS CRETICUS
- GOLDEN CURRANT
RIBES AUREUM
- FOUNTAIN GRASS
PENNISETUM ALOPECUROIDES 'HAMELN'
- 'AUTUMN JOY' STONECROP
SEDUM 'AUTUMN JOY'

- BLUE OAT GRASS
HELICTOTRICHON SEMPERVIRENS

- MOONSHINE YARROW
ACHILLEA MOONSHINE

- ELIJAH BLUE FESCUE
FESTUCA GLAUCA 'ELIJAH BLUE'

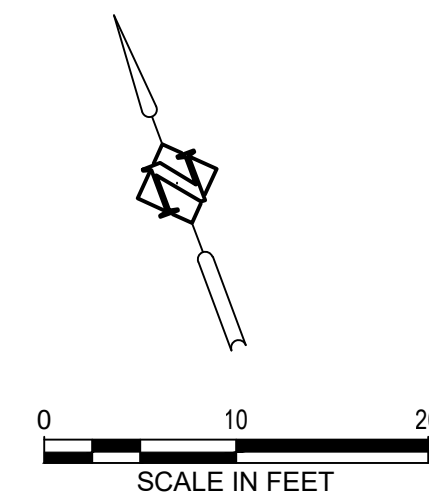
GROUNDCOVER:

- KINNIKINNICK
ARCTOSTAPHYLOS UVA-URSI

- ROCK COTONEASTER
COTONEASTER HORIZONTALIS

NOTES

- 1) REMOVE AND REPLACE ALL EXISTING STREET TREES WITH SPECIES SPECIFIED THIS SHEET.
- 2) ROOF PLANTING TO BE SPECIFIED DURING DESIGN DEVELOPMENT PHASE.



Plot Date:

Revit File:

TITLE

DATE DESCRIPTION

REVISIONS

GAK DAH
DRAWN BY CHECK BY

LAND USE

STATUS

07/29/2022

DATE

19914

PROJECT NUMBER

L1.00

© 2022 OTAK, INC.

If this drawing is not 24" x 36", it has been reduced/enlarged. Scale accordingly.