

# GWENDOLYN HOTEL





4TH STREET

FORD STREET

GALLOWAY STREET

3RD STREET

SITE

STAMP

CONSULTANT

**GWENDOLYN HOTEL**  
 609 NE 3RD STREET, 611 NE 3RD STREET, 619 NE 3RD STREET  
 MCMINNVILLE, OREGON 97128

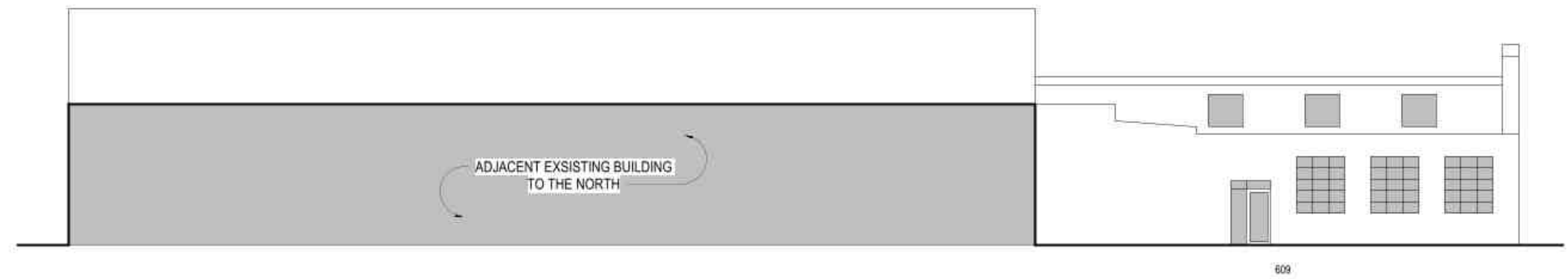
EXISTING BUILDING ELEVATIONS

TITLE

# DATE DESCRIPTION

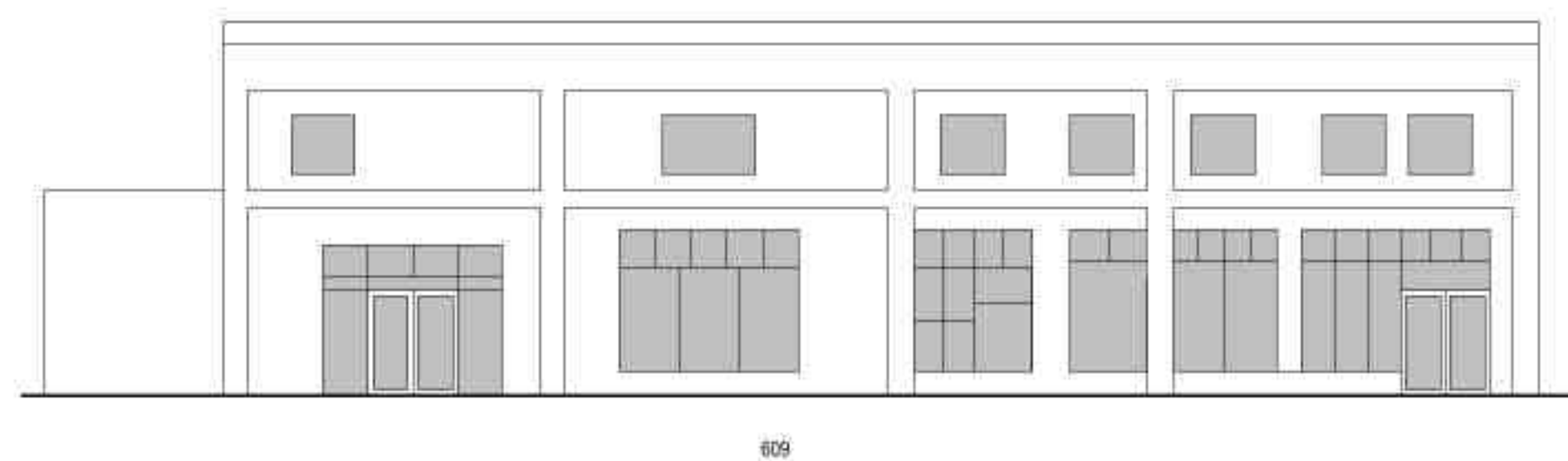
REVISIONS

Author	Checker
DRAWN BY	CHECK BY
LAND USE	
STATUS	
07/29/2022	
DATE	
19914	
PROJECT NUMBER	



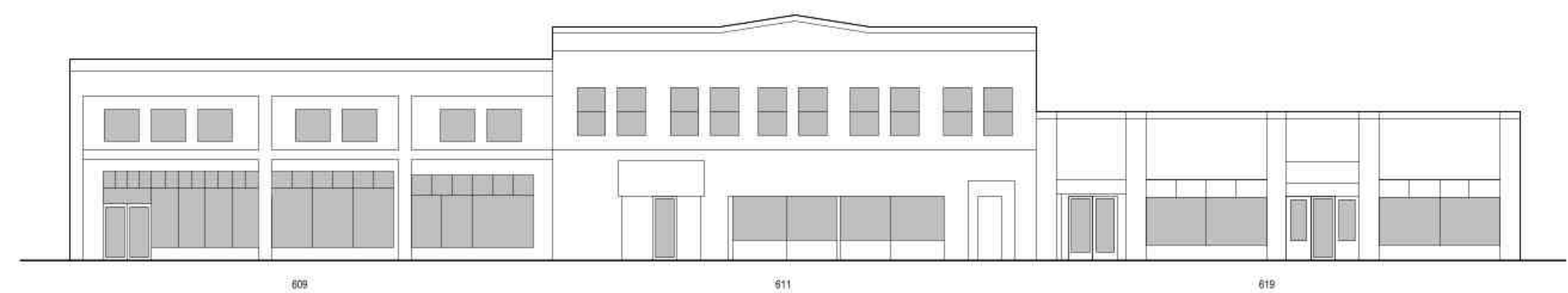
**EXISTING NORTH ELEVATION**

SCALE: 3/32" = 1'-0"



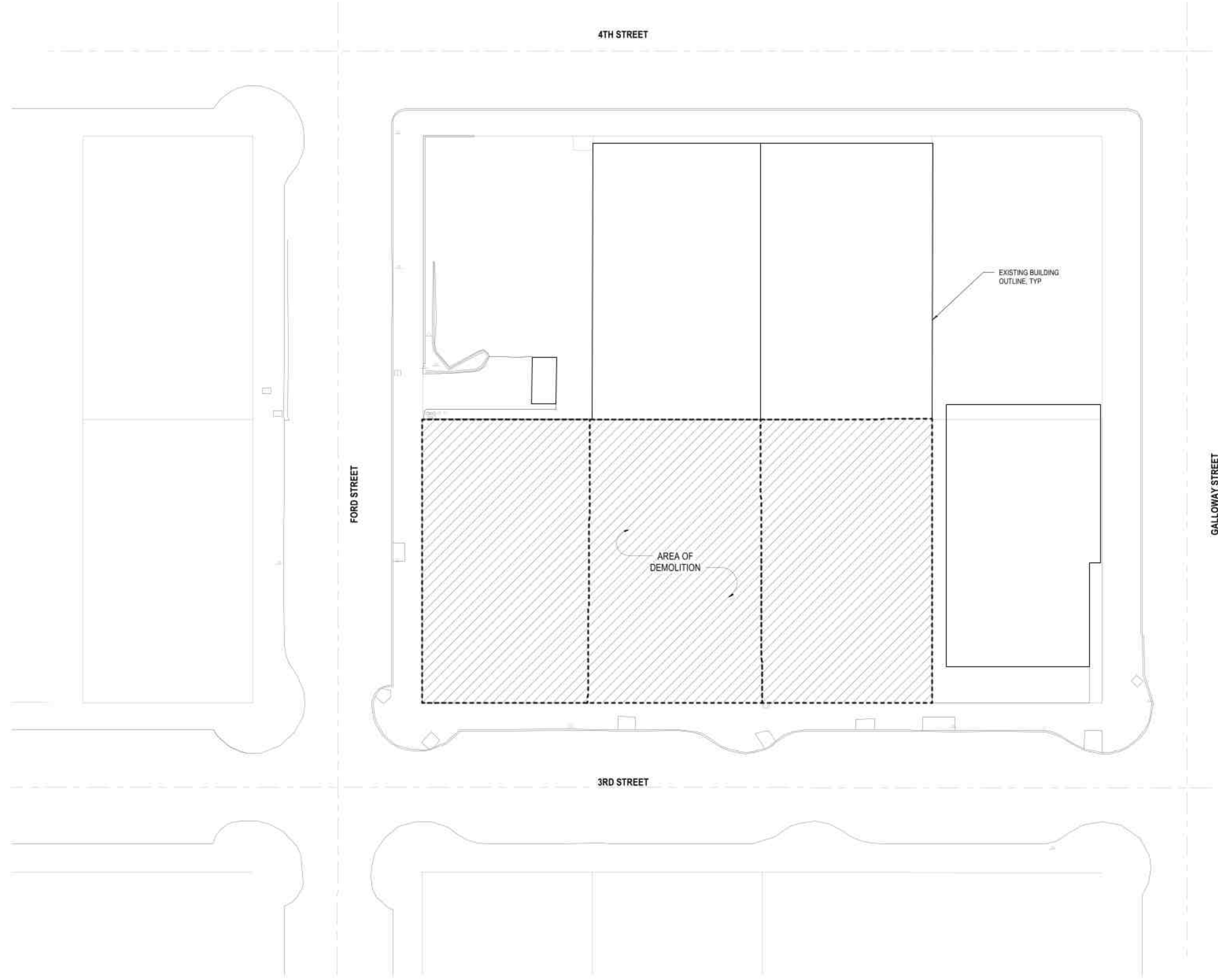
**EXISTING WEST ELEVATION**

SCALE: 3/32" = 1'-0"



**EXISTING SOUTH ELEVATION**

SCALE: 3/32" = 1'-0"



**1 DEMO SITE PLAN**  
 SCALE: 1" = 20'-0"

STAMP

CONSULTANT

**GWENDOLYN HOTEL**  
 609 NE 3RD STREET, 611 NE 3RD STREET, 619 NE 3RD STREET  
 MCMINNVILLE, OREGON 97128  
**DEMO SITE PLAN**

TITLE

# DATE DESCRIPTION

REVISIONS

Author	Checker
DRAWN BY	CHECK BY
LAND USE	
STATUS	
07/29/2022	
DATE	
19914	
PROJECT NUMBER	



STAMP

CONSULTANT

**GWENDOLYN HOTEL**  
609 NE 3RD STREET, 611 NE 3RD STREET, 619 NE 3RD STREET  
MCMINNVILLE, OREGON 97128

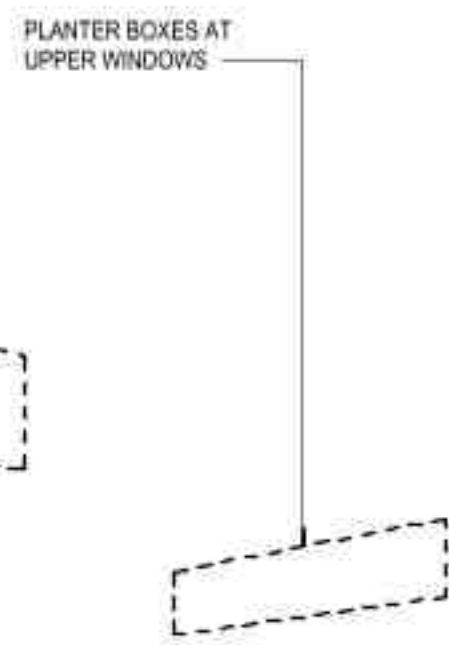
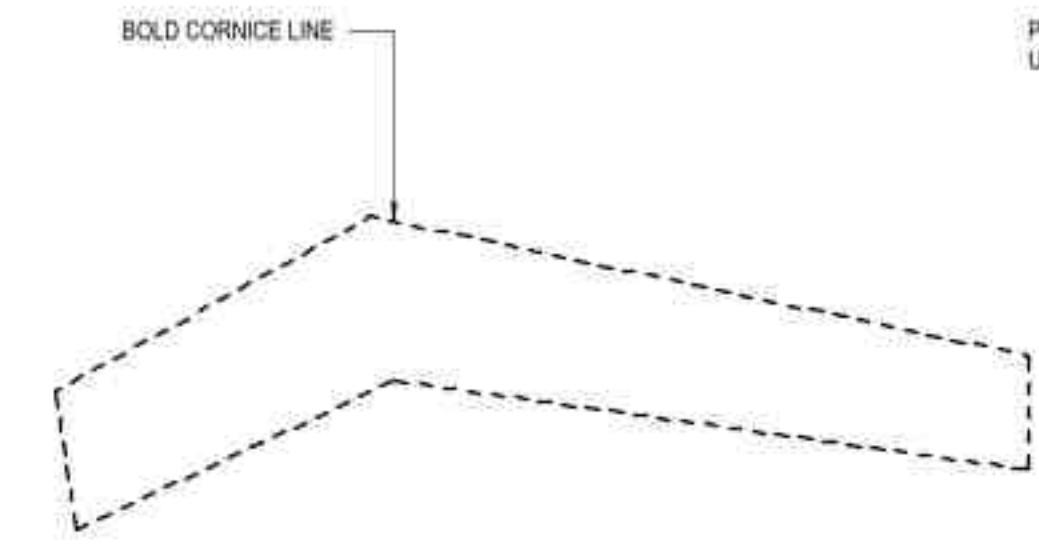
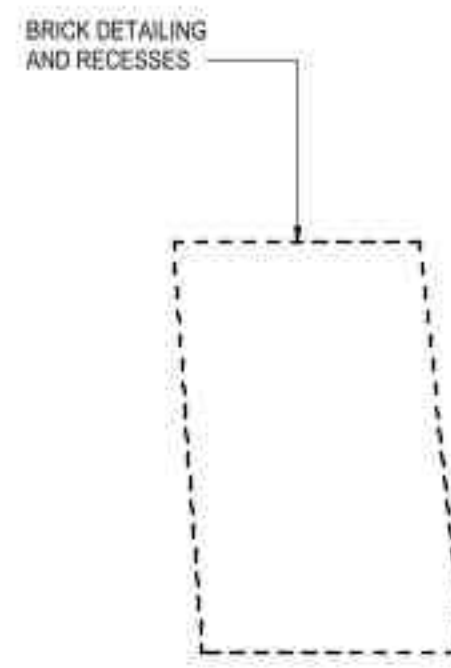
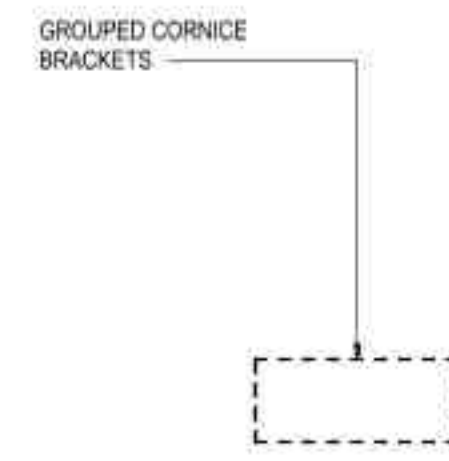
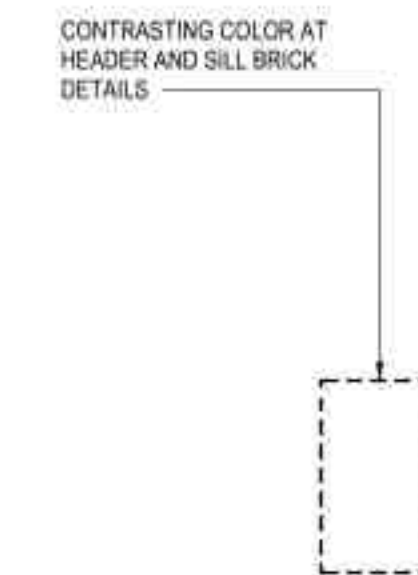
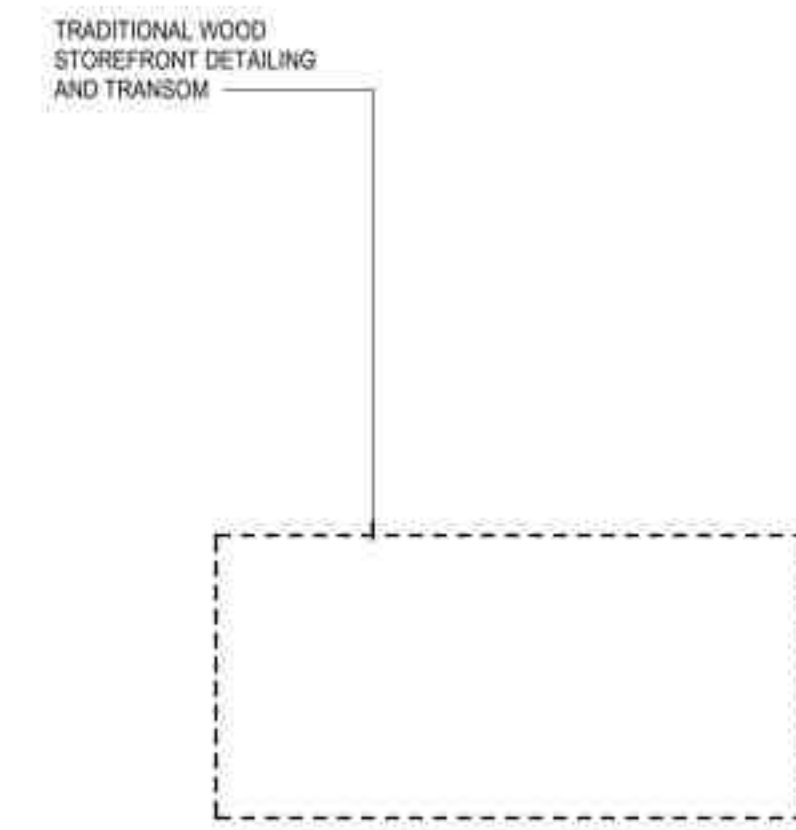
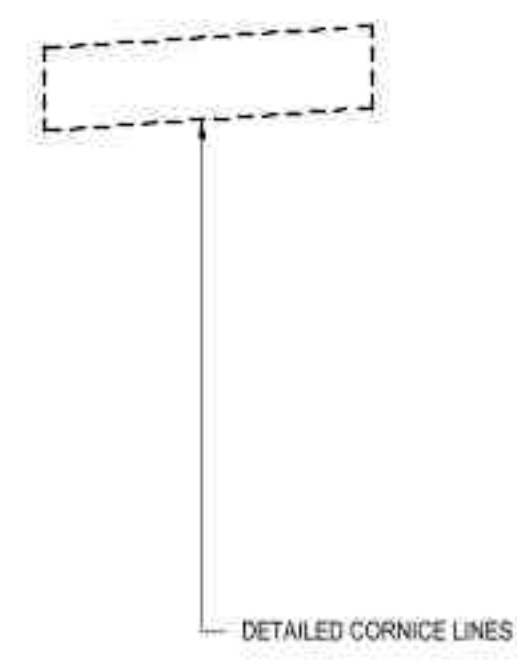
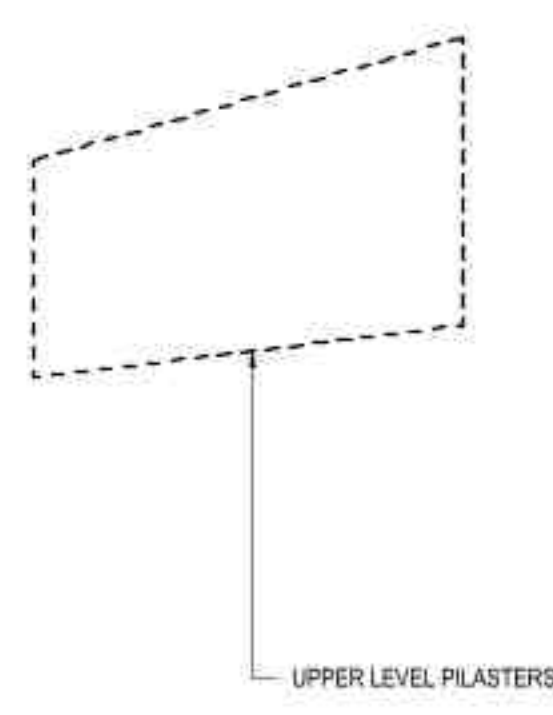
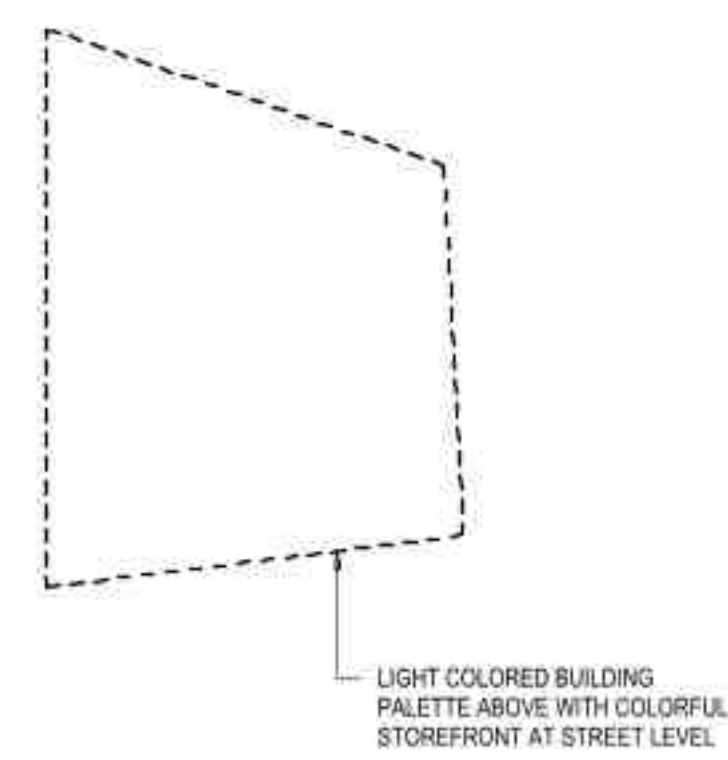
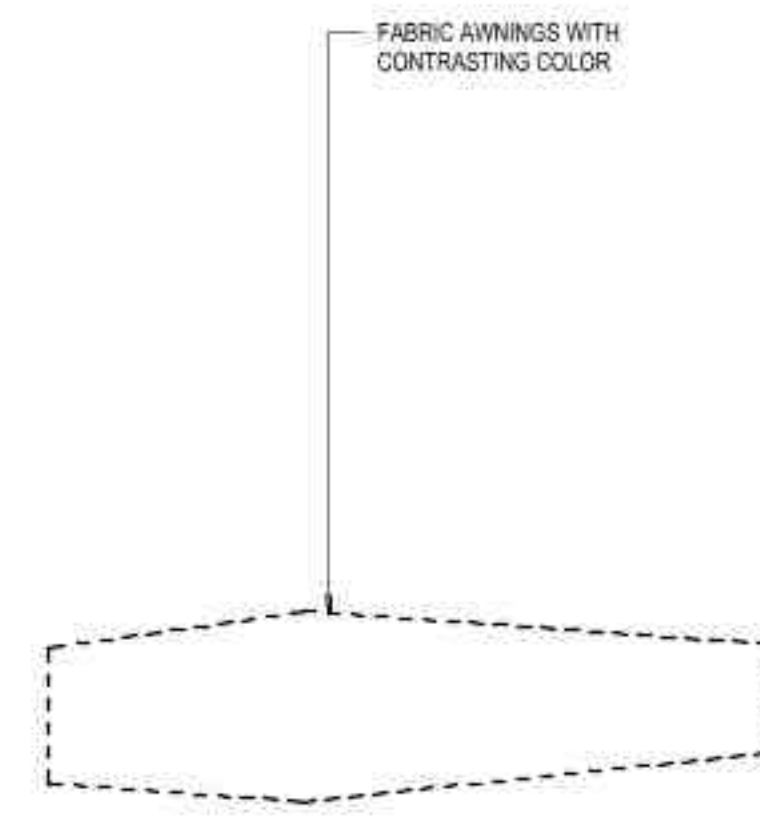
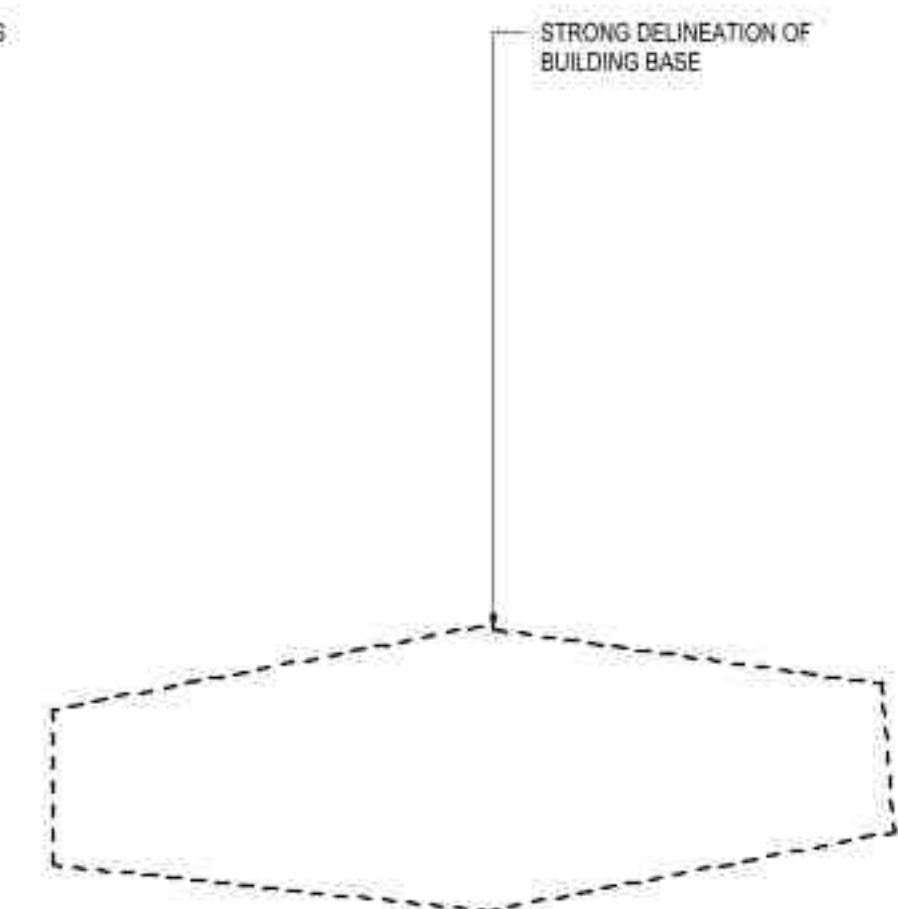
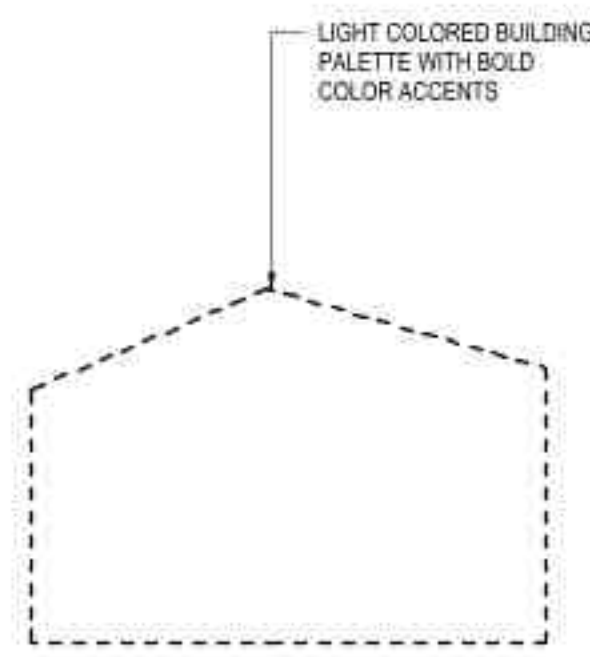
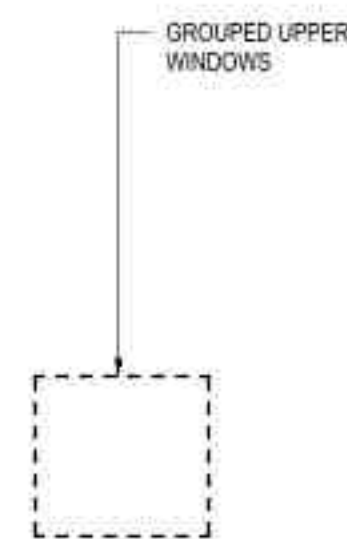
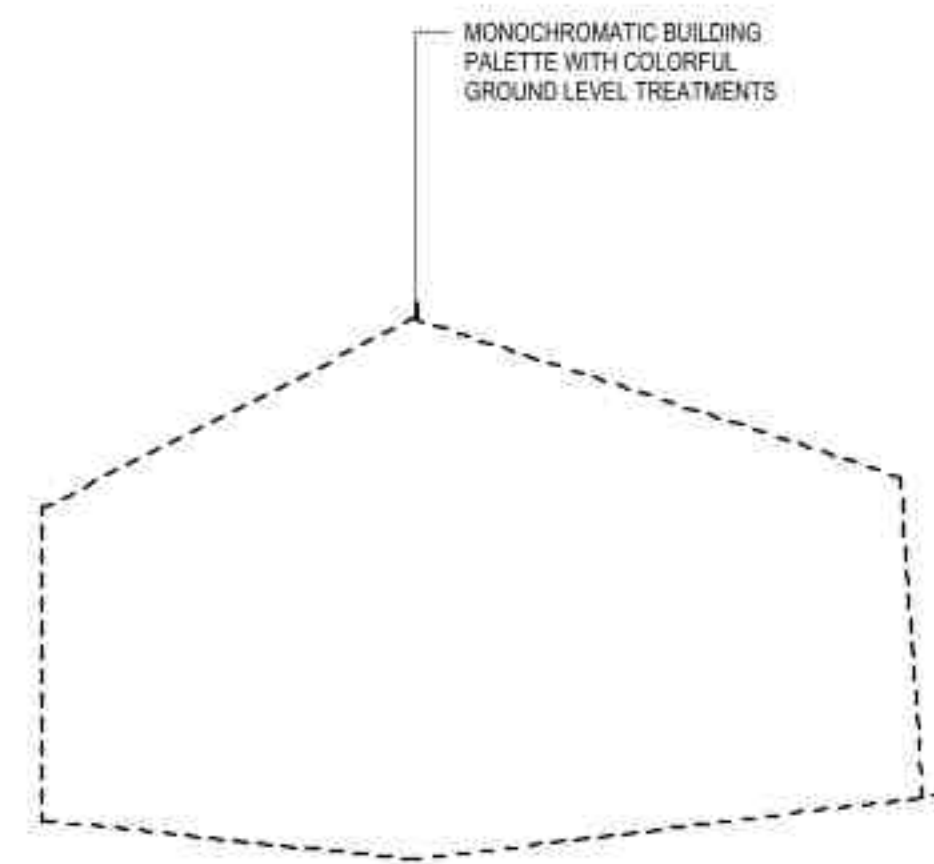
CONTEXT ELEVATIONS

TITLE

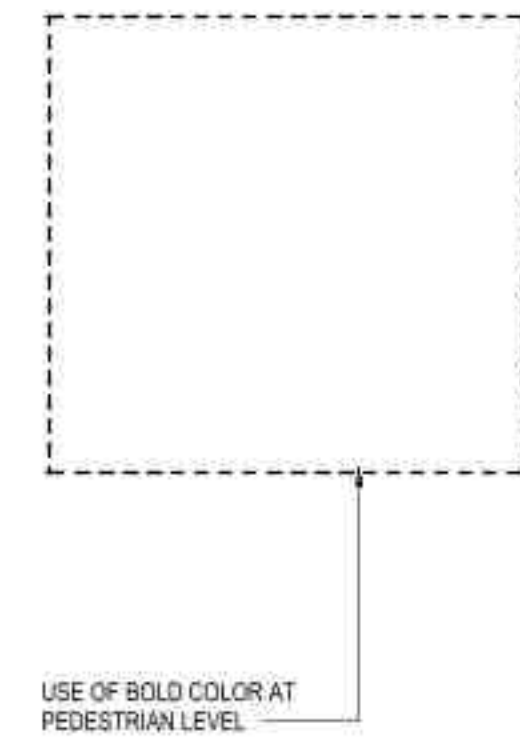
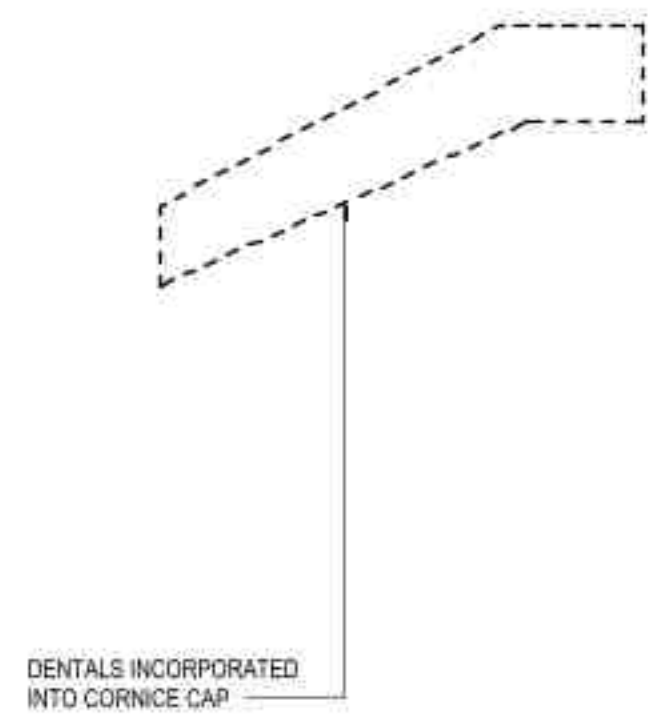
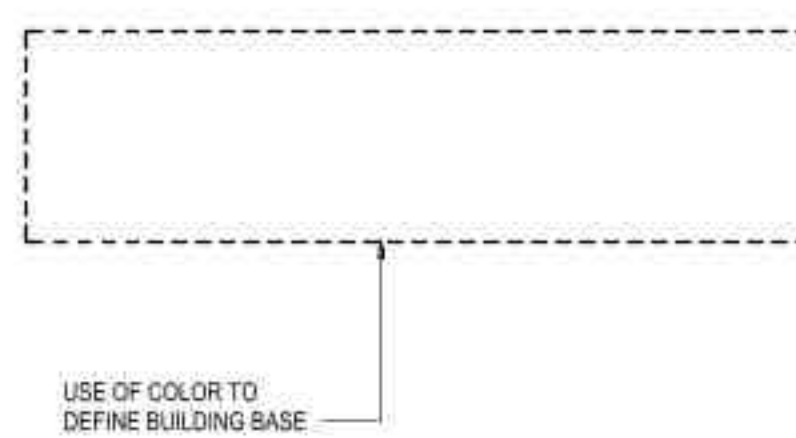
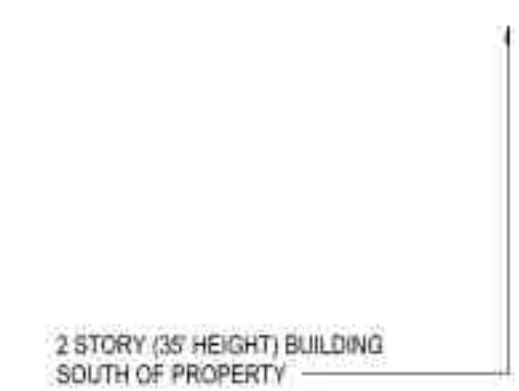
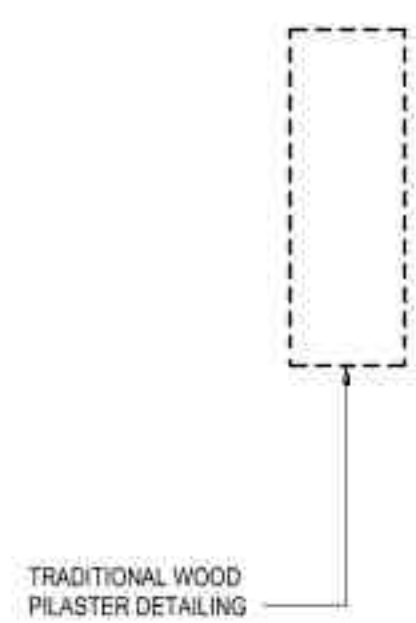
# DATE DESCRIPTION

REVISIONS

Author	Checker
DRAWN BY	CHECK BY
STATUS	
07/29/2022	
DATE	
1994	
PROJECT NUMBER	



**NORTH SIDE OF 3RD STREET**



**SOUTH SIDE OF 3RD STREET**

STAMP

CONSULTANT

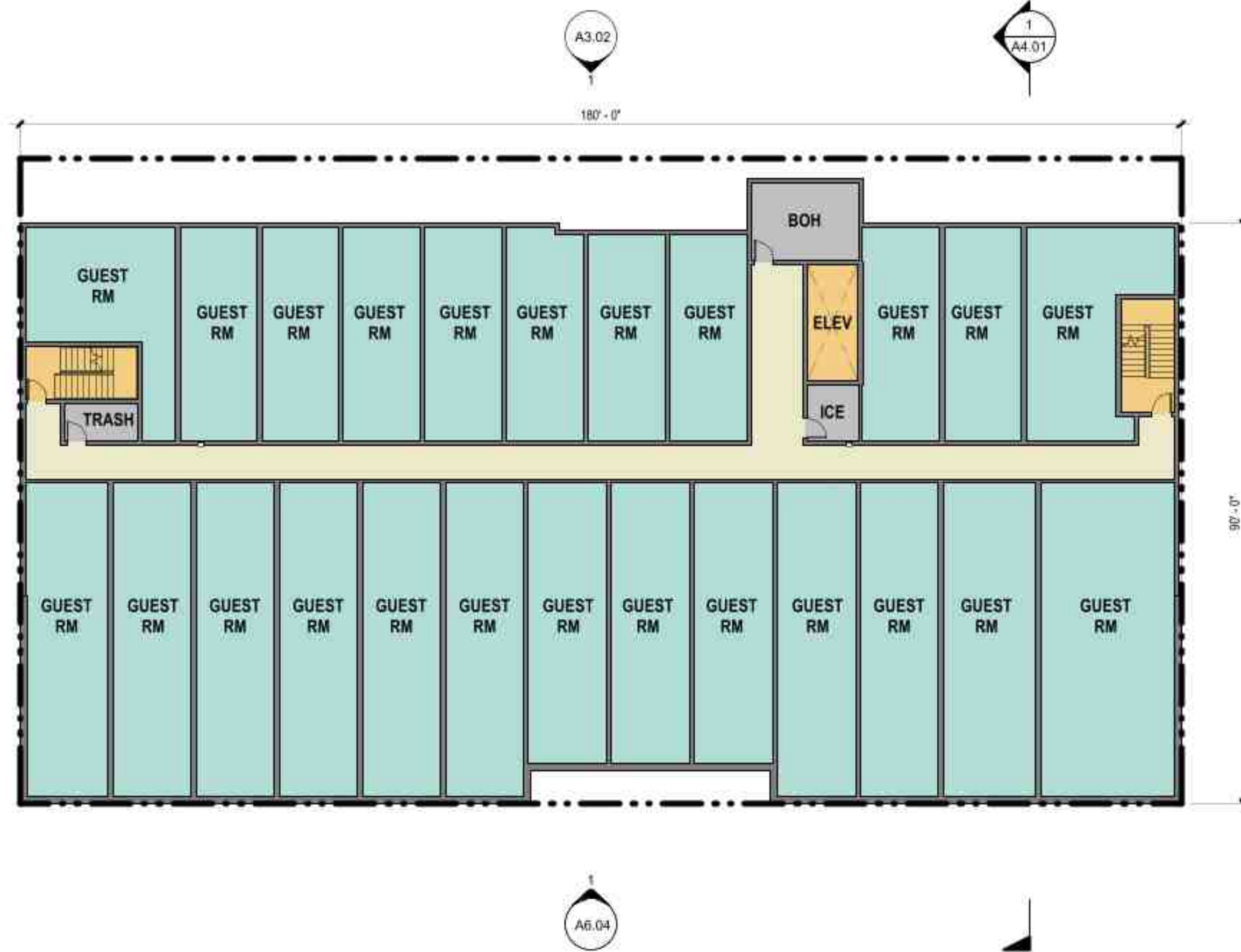
**GWENDOLYN HOTEL**  
609 NE 3RD STREET, 611 NE 3RD STREET, 619 NE 3RD STREET  
MCMINNVILLE, OREGON 97128

FLOOR PLANS

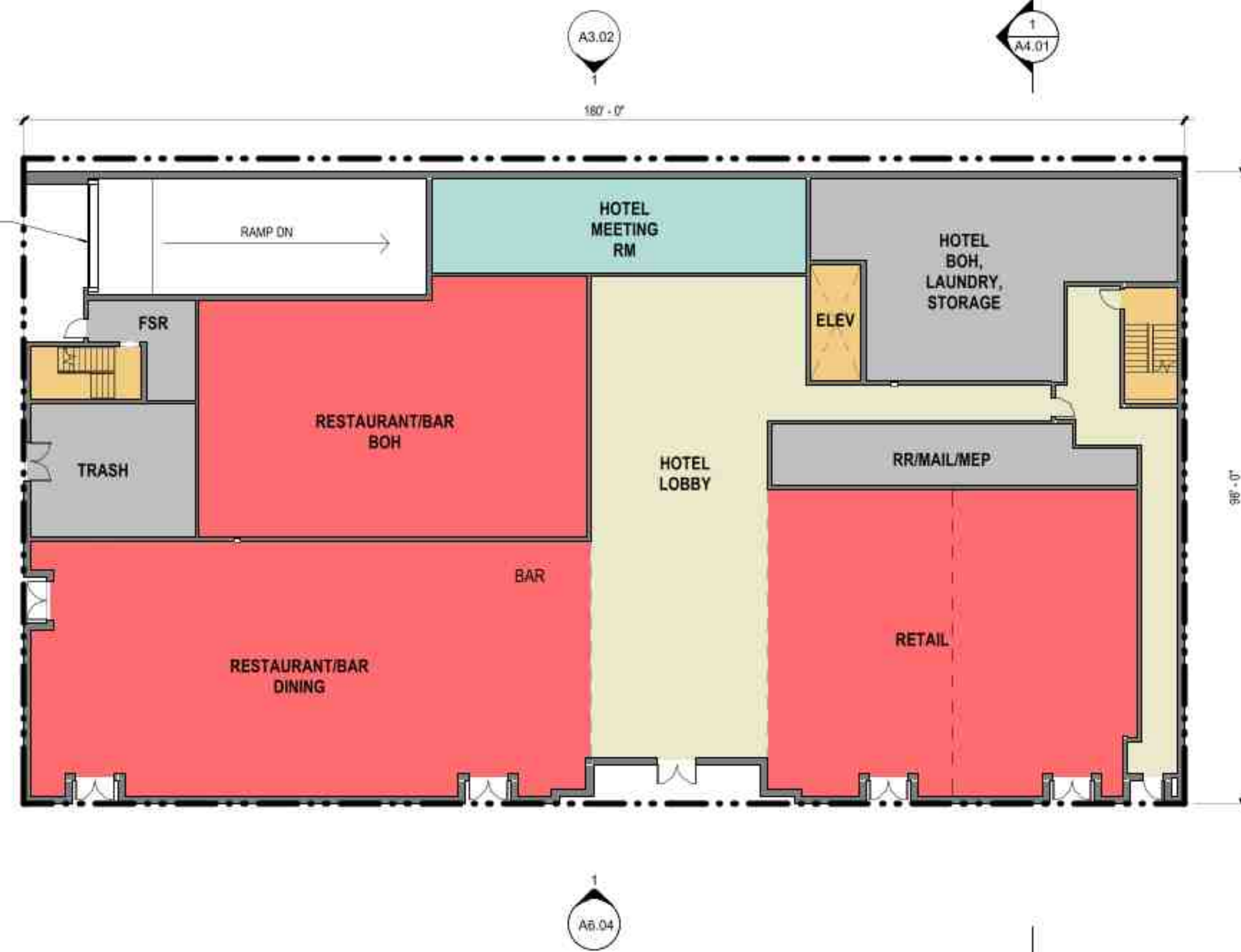
REVISIONS		
#	DATE	DESCRIPTION

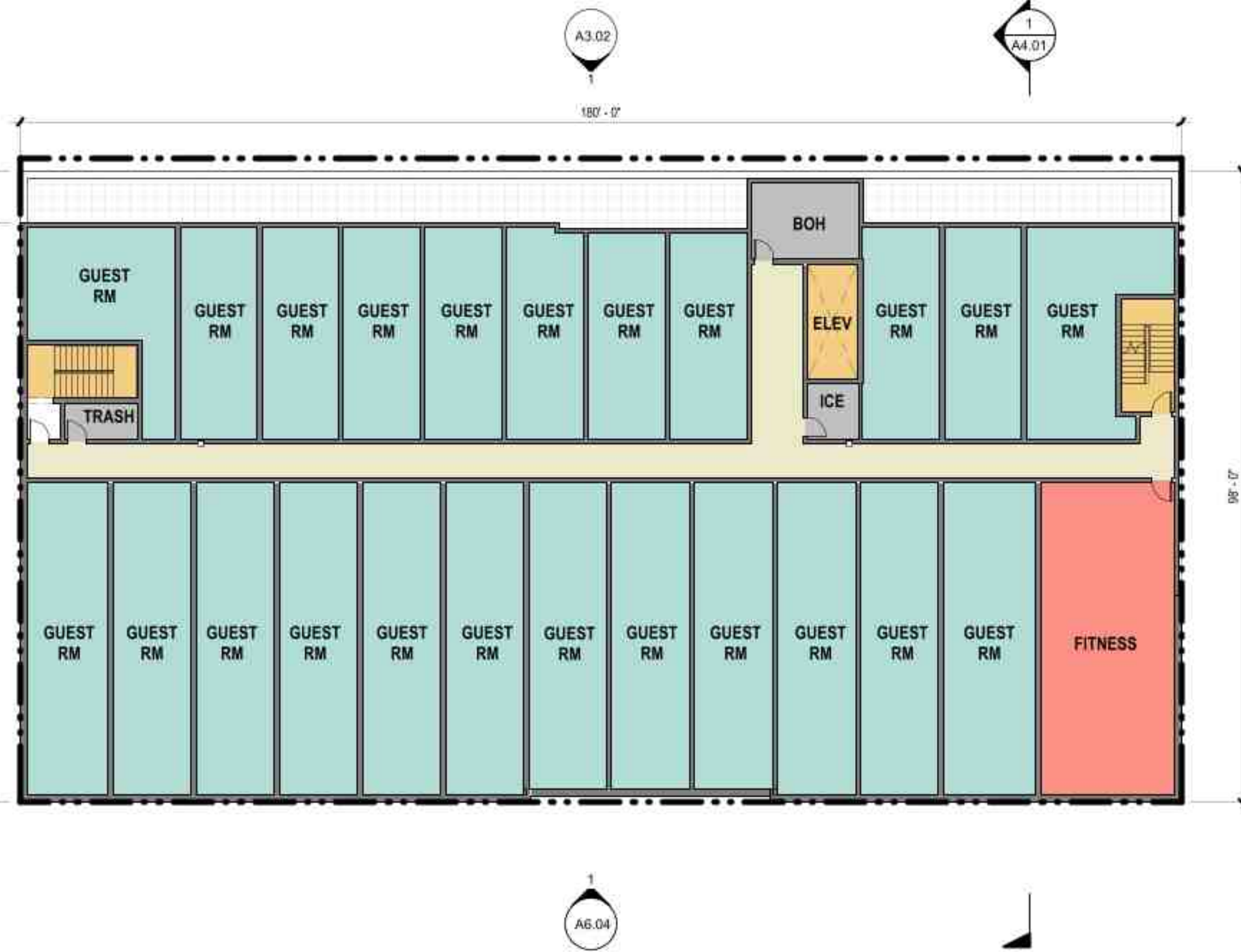
Author	Checker
Drawn By	Check By
Land Use	Status
07/29/2022	Date
19914	Project Number



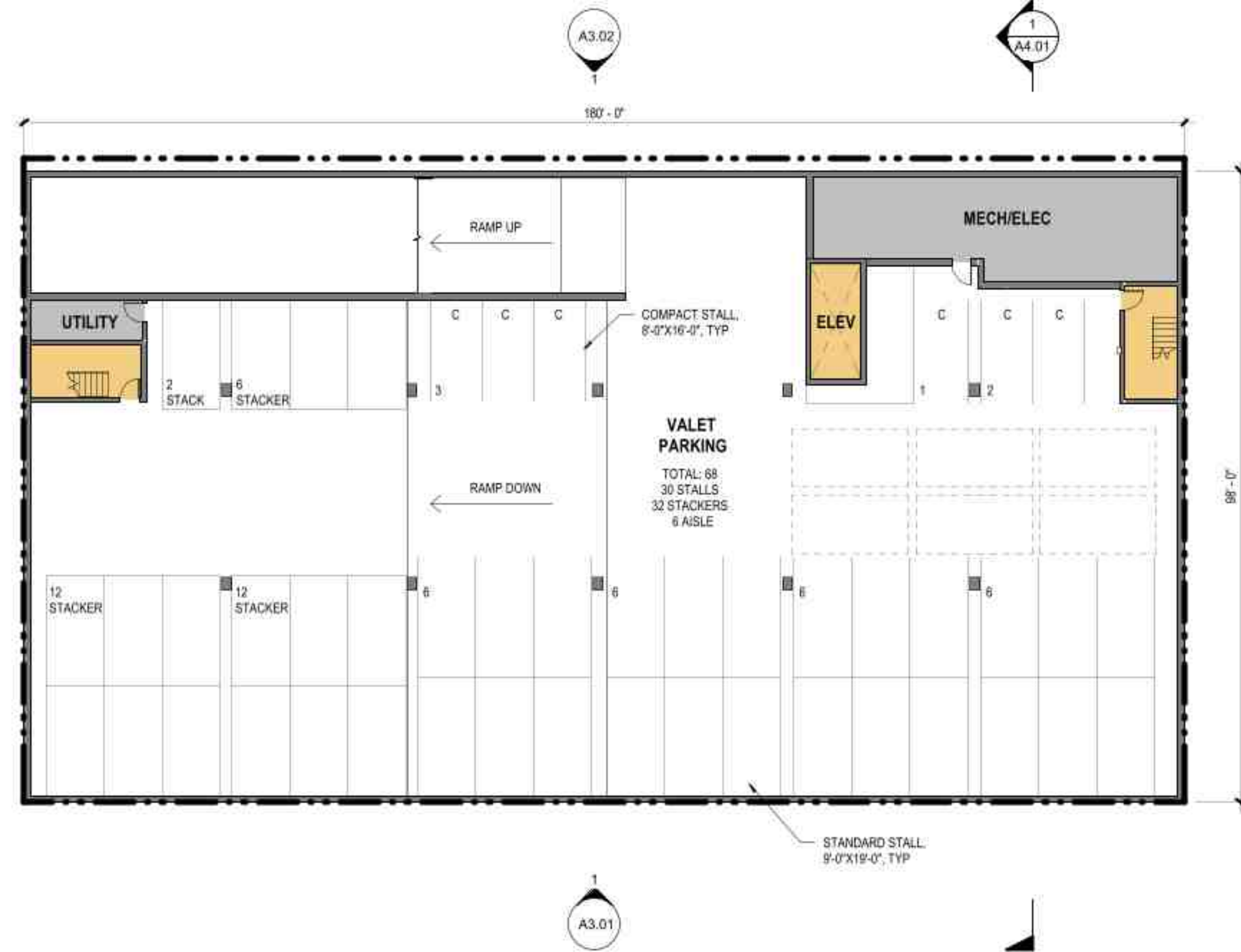
**4 LEVEL 03 - FLOOR PLAN**  
A2.01 SCALE: 1/16" = 1'-0"



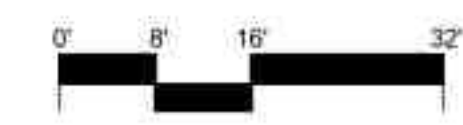
**1 LEVEL 01 - FLOOR PLAN**  
A2.01 SCALE: 1/16" = 1'-0"



**3 LEVEL 02 - FLOOR PLAN**  
A2.01 SCALE: 1/16" = 1'-0"



**2 LEVEL B1 - FLOOR PLAN**  
A2.01 SCALE: 1/16" = 1'-0"



Plot Date: 7/29/2022 11:19:46 PM  
 Revit File: Autodesk Docs\19914 - Gwendolyn Hotel\19914-Gwendolyn Hotel-Arch\A22.rvt

STAMP

CONSULTANT

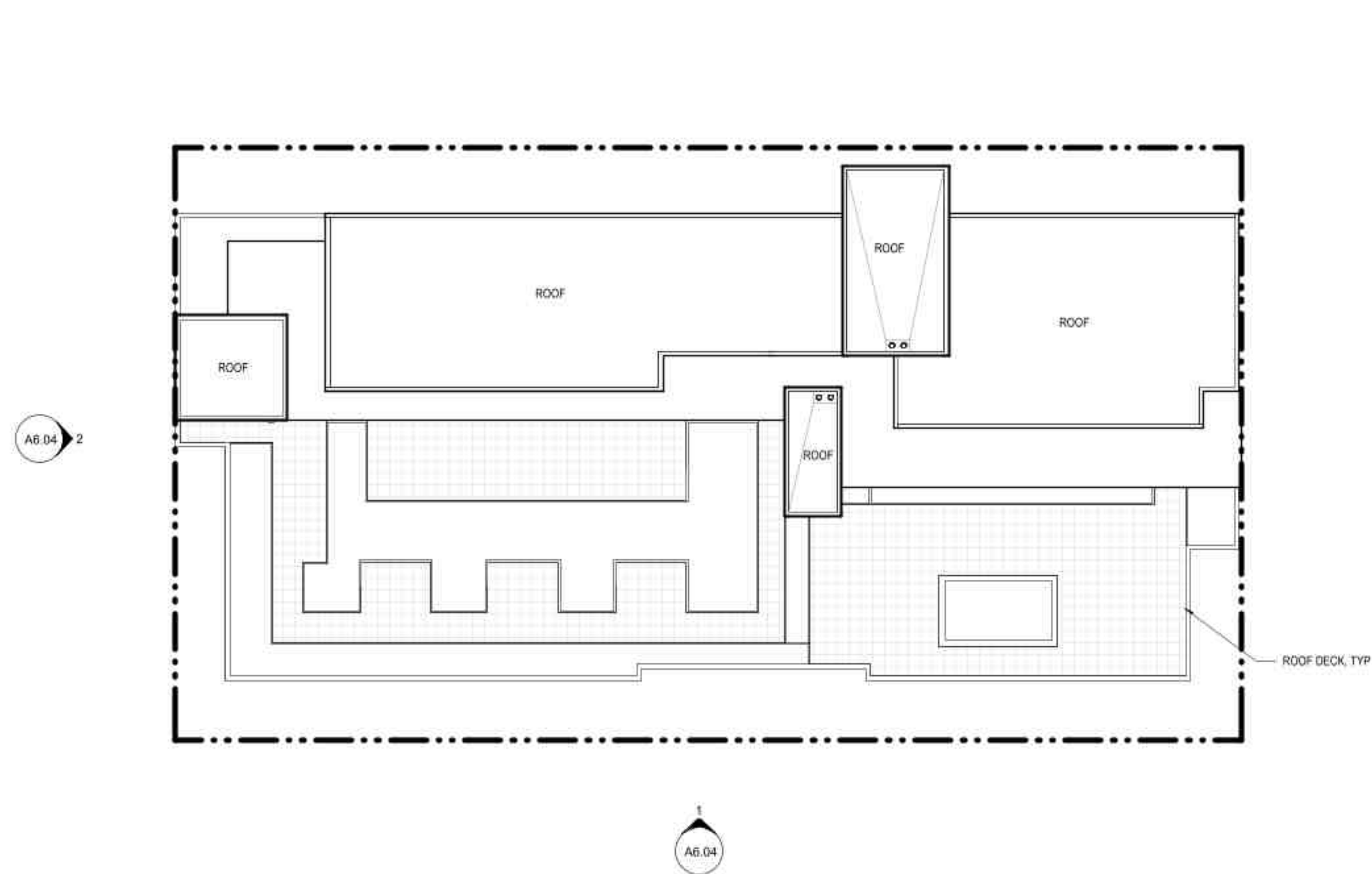
**GWENDOLYN HOTEL**  
609 NE 3RD STREET, 611 NE 3RD STREET, 619 NE 3RD STREET  
MCMINNVILLE, OREGON 97128

FLOOR PLANS

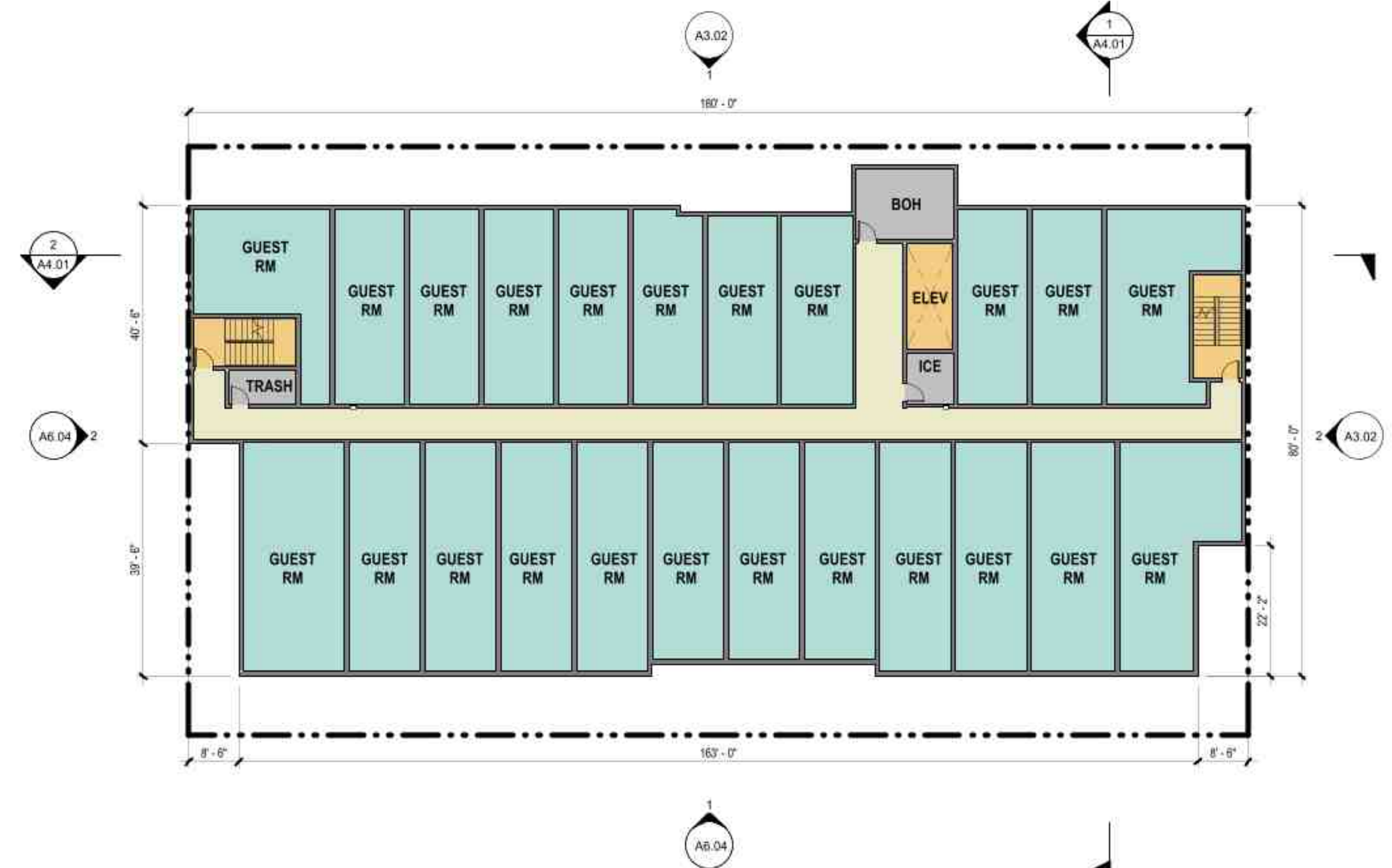
TITLE  
# DATE DESCRIPTION

REVISIONS	
Author	Checker
DRAWN BY	CHECK BY
LAND USE	
STATUS	
07/29/2022	
DATE	
19914	
PROJECT NUMBER	

© 2022 OTAK, INC.  
If this drawing is not 24" x 36", it has been reduced/enlarged. Scale accordingly.



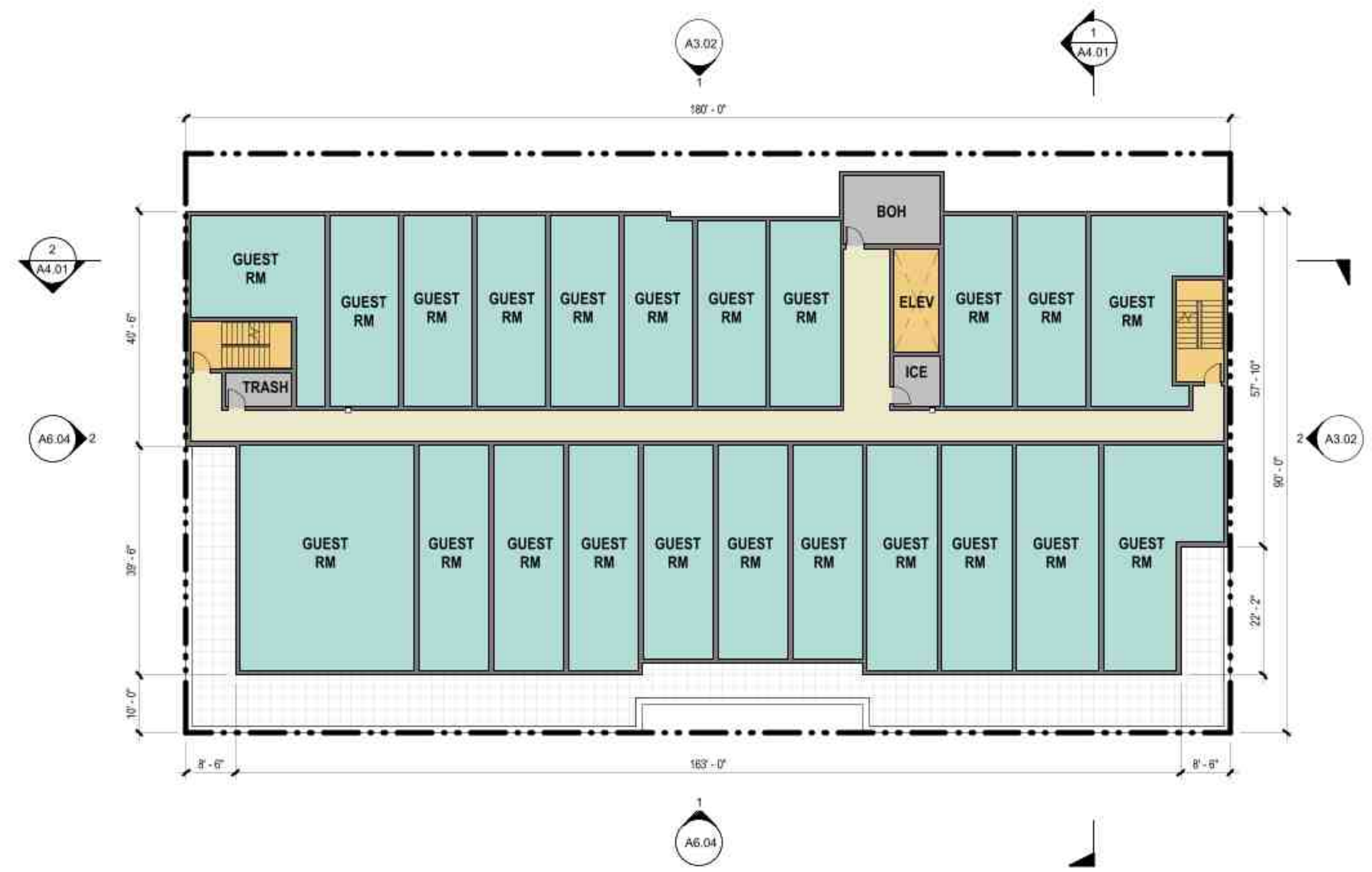
2 ROOF PLAN  
A2.02 SCALE: 1/16" = 1'-0"



3 LEVEL 05 - FLOOR PLAN  
A2.02 SCALE: 1/16" = 1'-0"



1 LEVEL 06/ROOF DECK - FLOOR PLAN  
A2.02 SCALE: 1/16" = 1'-0"



4 LEVEL 04 - FLOOR PLAN  
A2.02 SCALE: 1/16" = 1'-0"

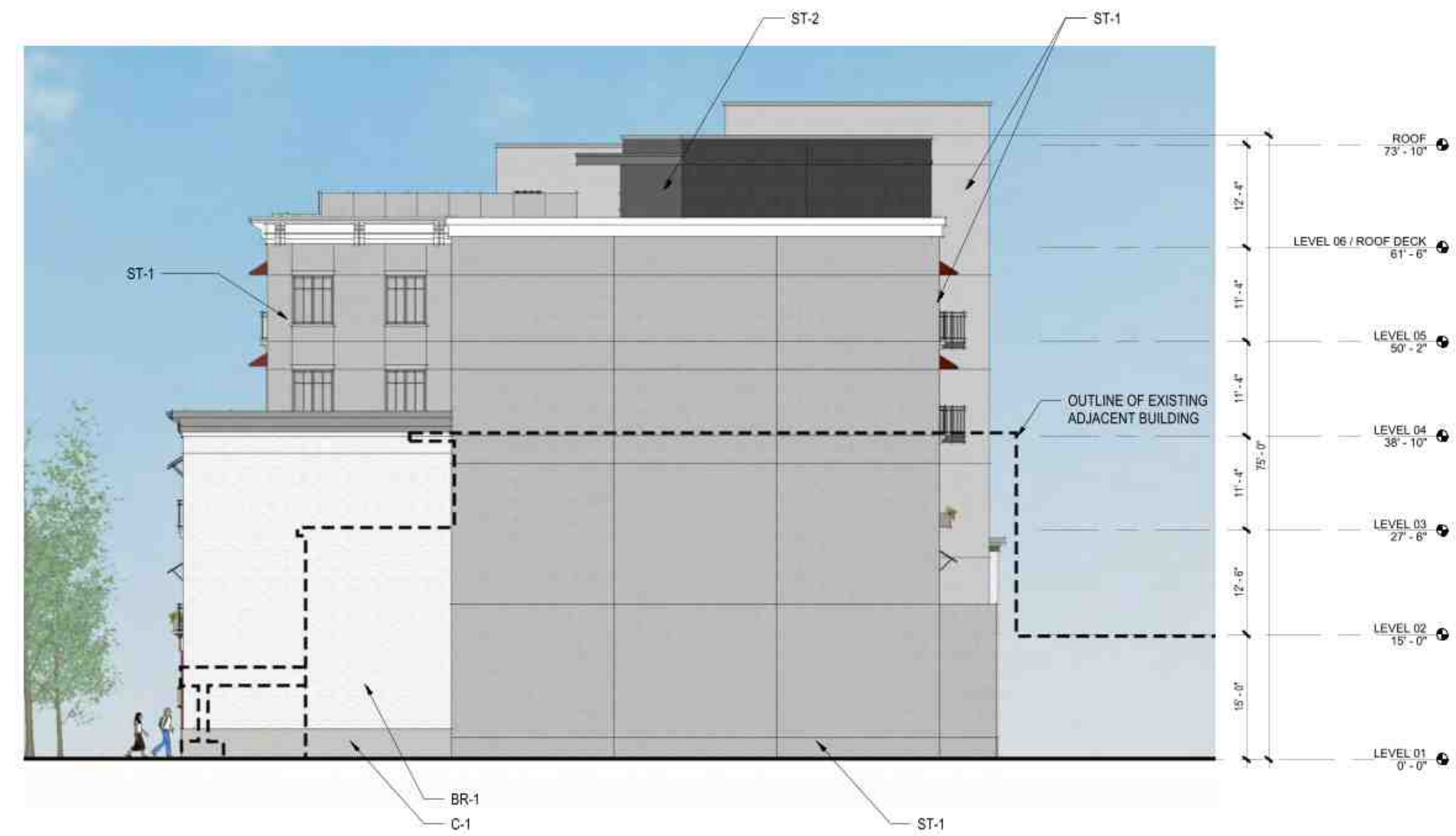






**MATERIAL LEGEND**

- BR-1 FACE BRICK - WIRECUT "WHITE"
- BR-2 FACE BRICK - GLAZED "WHITE"
- BR-3 FACE BRICK - "DARK GREY"
- C-1 PRECAST CONCRETE PANEL "LIGHT GREY"
- C-2 PRECAST CONCRETE PANEL "DARK GREY"
- PT-1 PAINTED COMPOSITE PANELING "RED"
- PT-2 PAINTED COMPOSITE PANELING "DARK GREY"
- PT-3 PAINTED COMPOSITE PANELING "GREY"
- ST-1 STUCCO - SMOOTH TEXTURE "LIGHT GREY"
- ST-2 STUCCO - SMOOTH TEXTURE "DARK GREY"



**2 EAST - ELEVATION**  
SCALE: 3/32" = 1'-0"



**1 NORTH - ELEVATION**  
SCALE: 3/32" = 1'-0"

**GWENDOLYN HOTEL**  
609 NE 3RD STREET, 611 NE 3RD STREET, 619 NE 3RD STREET  
MCMINNVILLE, OREGON 97128

EXTERIOR ELEVATIONS

TITLE

#	DATE	DESCRIPTION

REVISIONS

Author	Checker

DRAWN BY	CHECK BY

LAND USE

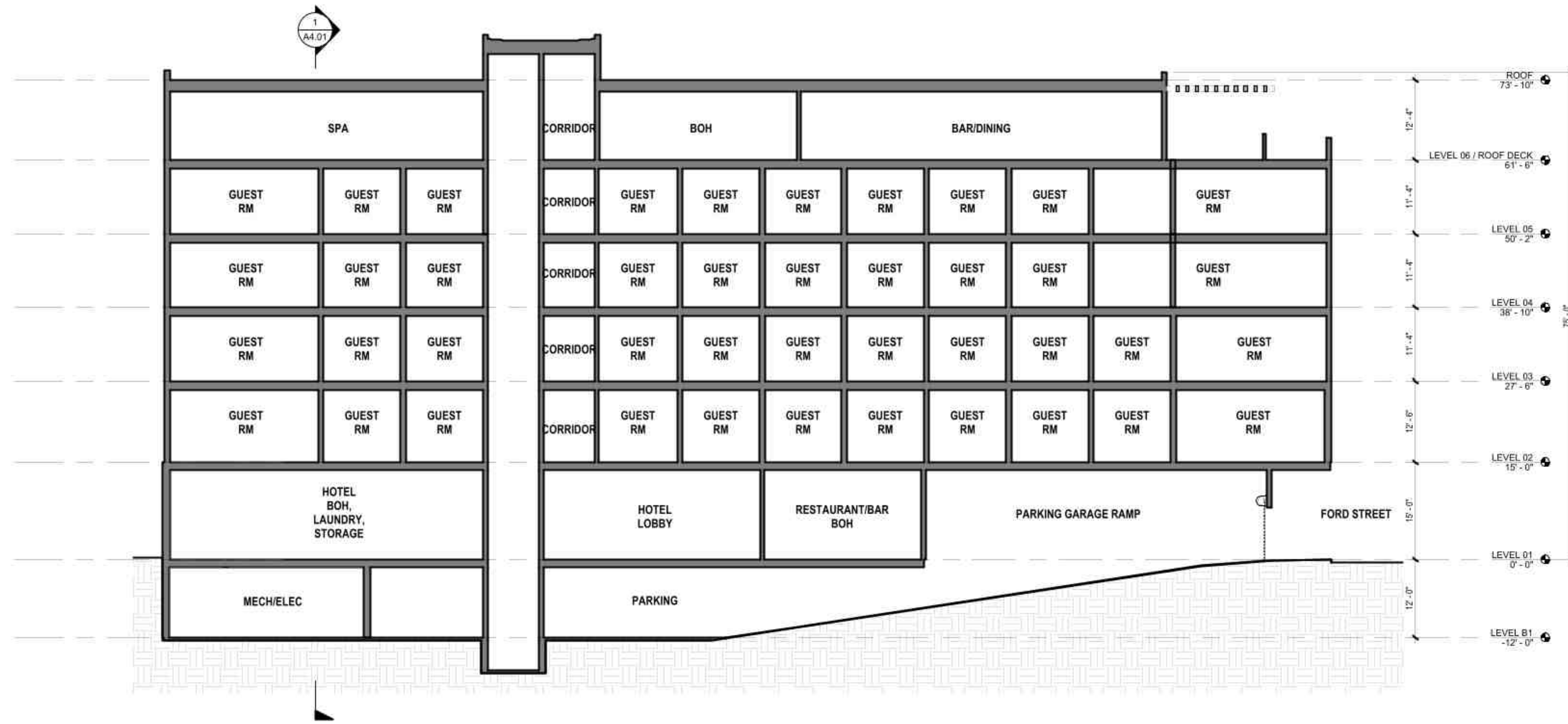
STATUS

07/29/2022

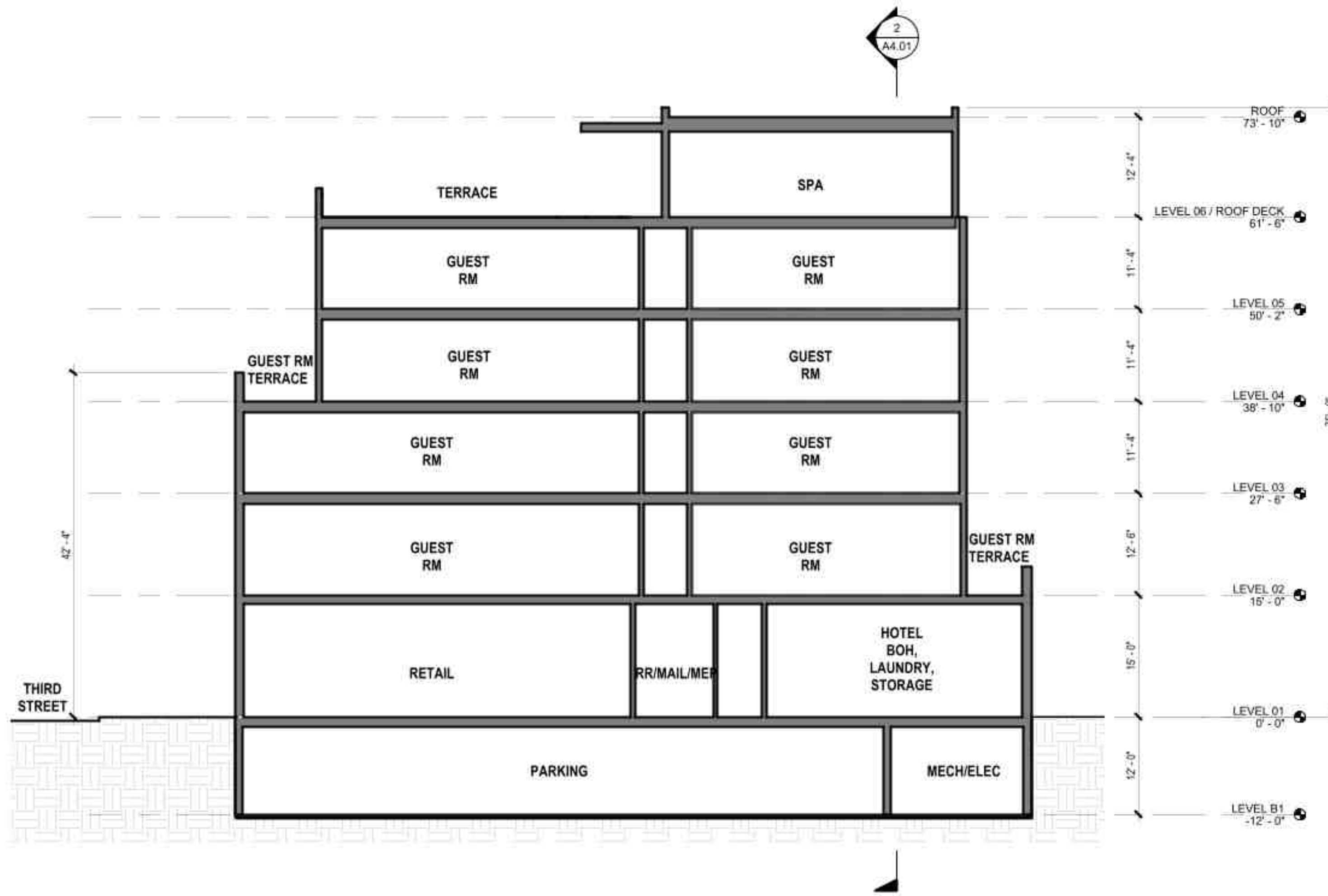
DATE

1994

PROJECT NUMBER



**2 EAST - WEST - SECTION**  
A4.01 SCALE: 3/32" = 1'-0"



**1 NORTH - SOUTH - SECTION**  
A4.01 SCALE: 3/32" = 1'-0"

STAMP

CONSULTANT

**GWENDOLYN HOTEL**  
609 NE 3RD STREET, 611 NE 3RD STREET, 619 NE 3RD STREET  
MCMINNVILLE, OREGON 97128

**BUILDING SECTIONS**

TITLE

# DATE DESCRIPTION

REVISIONS

Author Checker

DRAWN BY CHECK BY

LAND USE

STATUS

07/29/2022

DATE

19914

PROJECT NUMBER

© 2022 OTAK, INC.

If this drawing is not 24" x 36", it has been reduced/enlarged. Scale accordingly.

STAMP

CONSULTANT

**GWENDOLYN HOTEL**  
 609 NE 3RD STREET, 611 NE 3RD STREET, 619 NE 3RD STREET  
 MCMINNVILLE, OREGON 97128

**BUILDING EXTERIORS**

TITLE

# DATE DESCRIPTION

REVISIONS

Author Checker

DRAWN BY CHECK BY

LAND USE

STATUS

07/29/2022

DATE

19914

PROJECT NUMBER

© 2022 OTAK, INC.

If this drawing is not 24" x 36", it has been reduced/enlarged. Scale accordingly.

HOLLOW METAL DOORS

PICTURE WINDOW

PAINTED COMPOSITE PANELING, PT-2

LIGHT FIXTURE

STUCCO, ST-2

MOVING GLASS SYSTEM

FABRIC AWNING, STYLE 1

JULIETTE BALCONY, STYLE 1

STUCCO, ST-1

FABRIC AWNING, STYLE 2

FRENCH DOOR

FACE BRICK, BR-1

FRENCH CASEMENT WINDOW

PLANTER BOX

STOREFRONT SYSTEM

PAINTED COMPOSITE PANELING, PT-1

STUCCO TRIM

PRECAST CONCRETE SILL



GFRG CORNICE, PAINTED

GFRG CORNICE, PAINTED

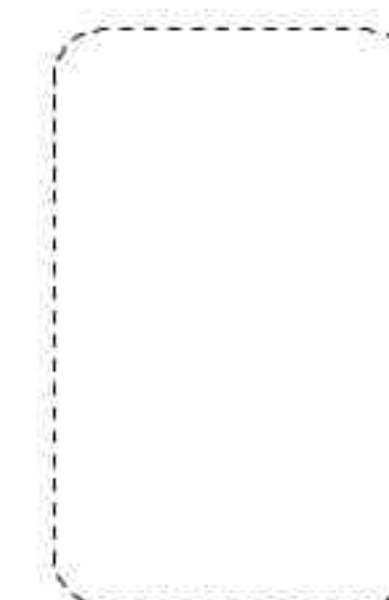
PILASTER, BR-1

SOLDIER COURSE, BR-1

**ENLARGED PARTIAL ELEVATION - 3RD STREET**

SCALE: 3/16" = 1'-0"

**AXONOMETRIC - CORNER OF 3RD AND FORD**



**ELEVATION KEY PLAN**

STAMP

CONSULTANT

**GWENDOLYN HOTEL**  
 609 NE 3RD STREET, 611 NE 3RD STREET, 619 NE 3RD STREET  
 MCMINNVILLE, OREGON 97128

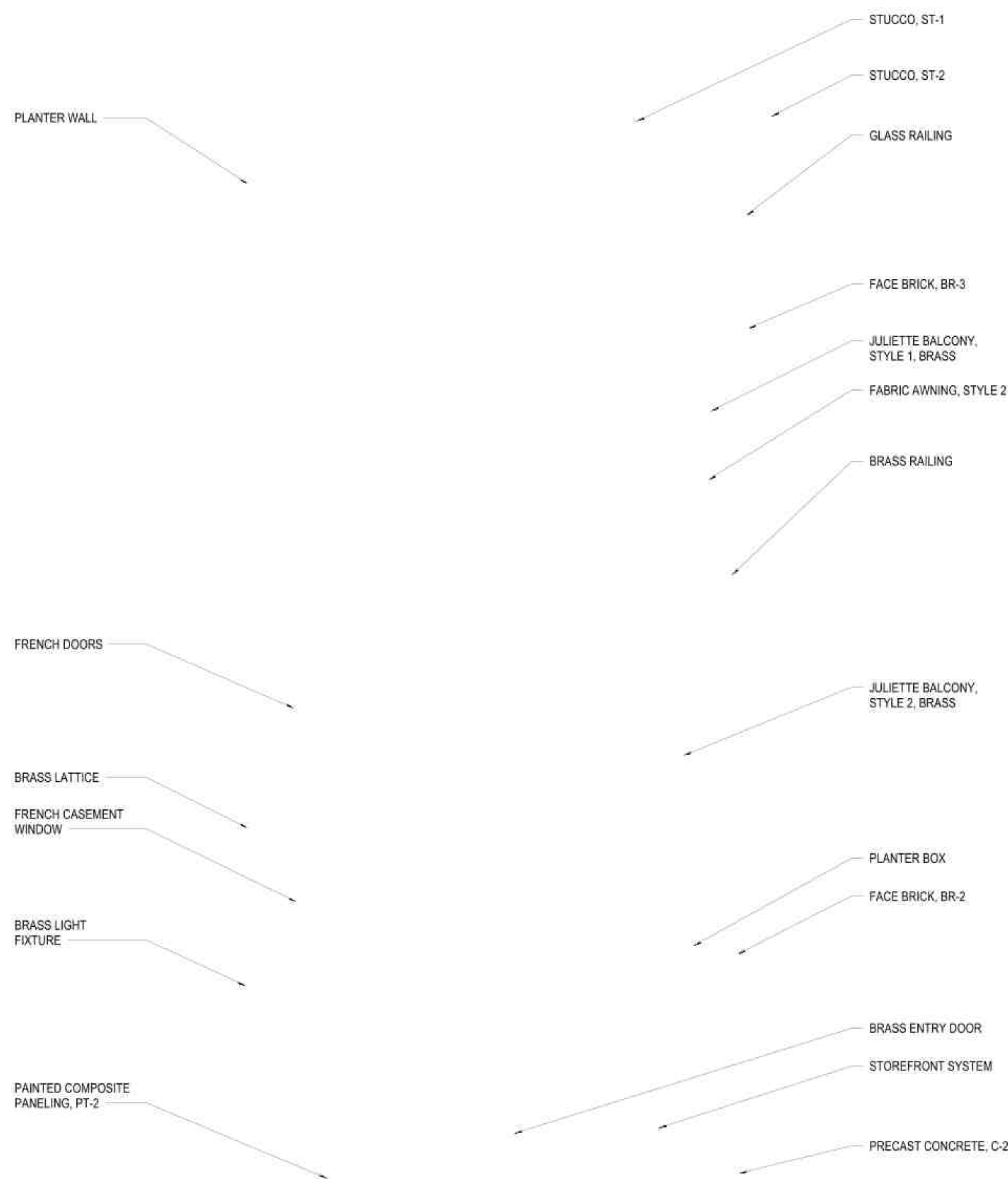
**BUILDING EXTERIORS**

TITLE

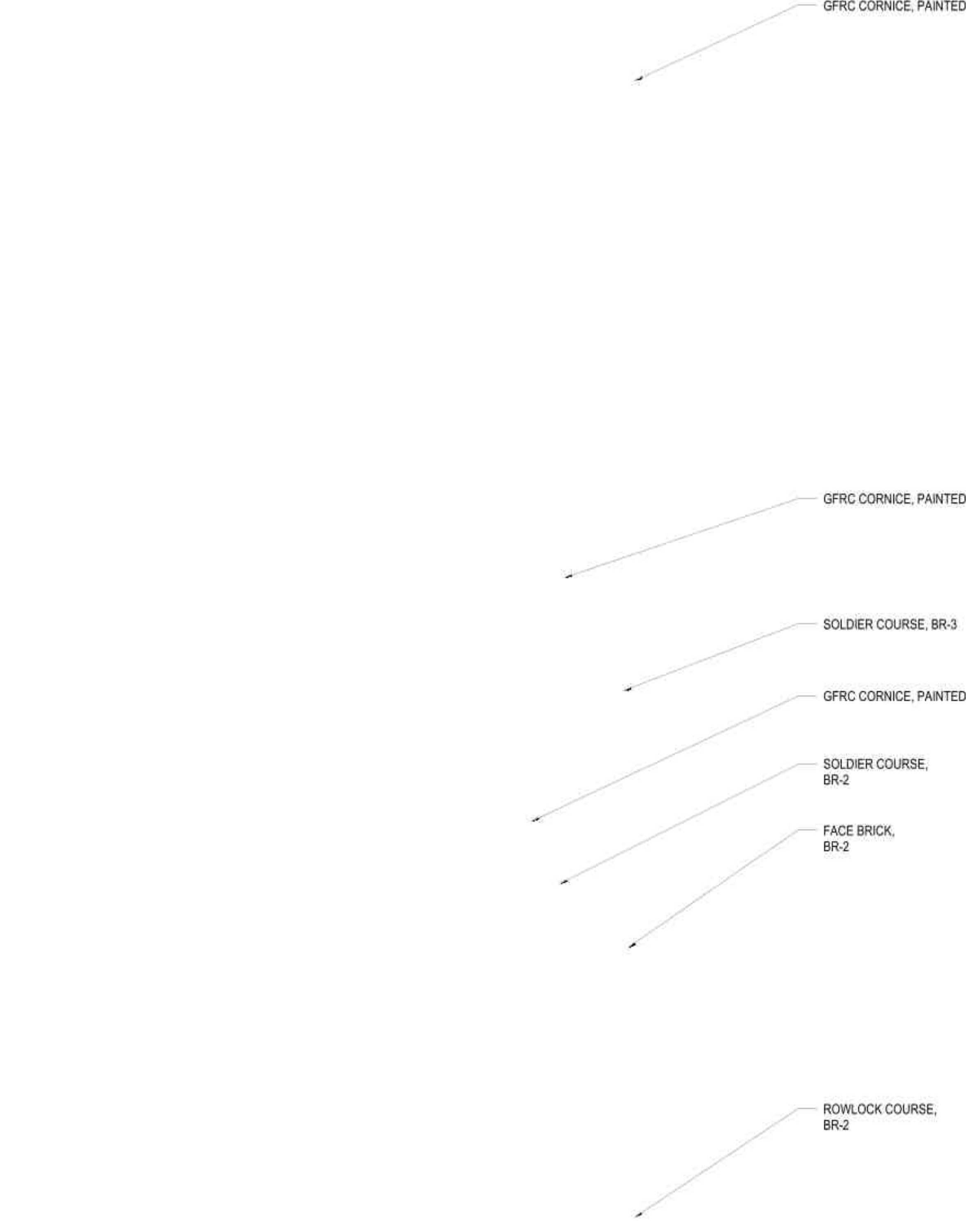
# DATE DESCRIPTION

REVISIONS

Author	Checker
DRAWN BY	CHECK BY
LAND USE	
STATUS	
07/29/2022	
DATE	
19914	
PROJECT NUMBER	



**ENLARGED PARTIAL ELEVATION - 3RD STREET**  
 SCALE: 3/16" = 1'-0"



**AXONOMETRIC - MID-BLOCK**



**ELEVATION KEY PLAN**

STAMP

CONSULTANT

**GWENDOLYN HOTEL**  
609 NE 3RD STREET, 611 NE 3RD STREET, 619 NE 3RD STREET  
MCMINNVILLE, OREGON 97128

**BUILDING EXTERIORS**

TITLE

# DATE DESCRIPTION

REVISIONS

Author	Checker
DRAWN BY	CHECK BY
LAND USE	
STATUS	
07/29/2022	
DATE	
19914	
PROJECT NUMBER	

CLERESTORY  
WINDOWS

STUCCO, ST-2

GUARDRAIL

JULIETTE  
BALCONY,  
STYLE 1

JULIETTE  
BALCONY,  
STYLE 2

PAINTED  
COMPOSITE  
PANELING,  
PT-3

STOREFRONT  
SYSTEM

GLASS RAILING

HOLLOW METAL  
DOOR

STUCCO, ST-1

FABRIC AWNING,  
STYLE 1

FABRIC AWNING,  
STYLE 2

FRENCH DOORS

FACE BRICK, BR-1

FABRIC AWNING,  
STYLE 1

PRECAST  
CONCRETE, C-2

GFRC CORNICE, PAINTED

STUCCO TRIM

PRE-CAST SILL

STUCCO REVEALS

GFRC CORNICE, PAINTED

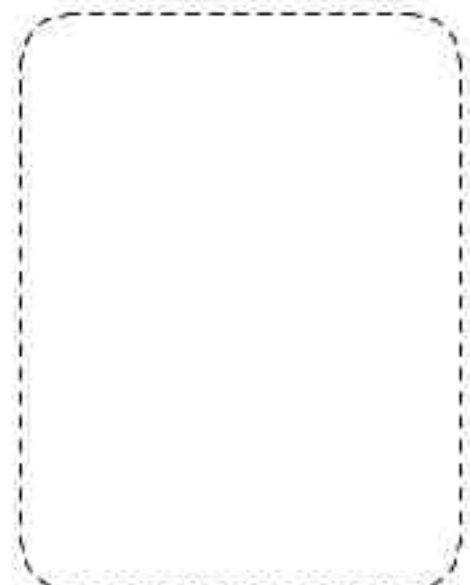
PILASTERS, BR-1



**ENLARGED PARTIAL ELEVATION - 3RD STREET**

SCALE: 3/16" = 1'-0"

**AXONOMETRIC - 3RD STREET**



**ELEVATION KEY PLAN**

STAMP

CONSULTANT

**GWENDOLYN HOTEL**  
 609 NE 3RD STREET, 611 NE 3RD STREET, 619 NE 3RD STREET  
 MCMINNVILLE, OREGON 97128

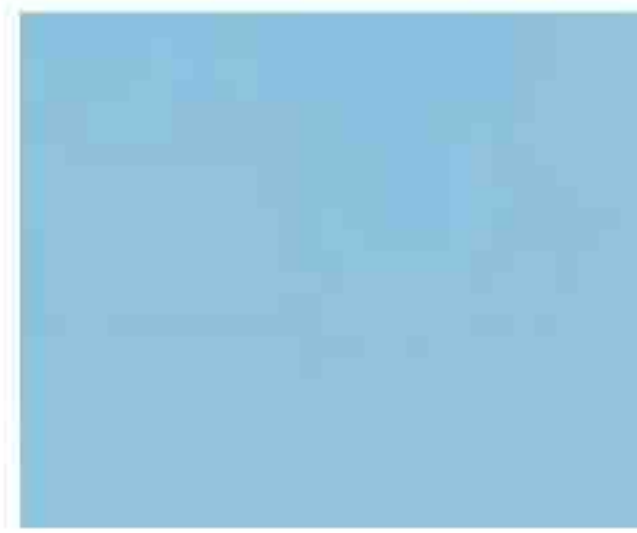
SIGHT LINES

TITLE

#	DATE	DESCRIPTION

REVISIONS

Author	Checker
DRAWN BY	CHECK BY
STATUS	
07/29/2022	
DATE	
19914	
PROJECT NUMBER	



**SIGHT LINE FROM 3RD STREET SIDEWALK**

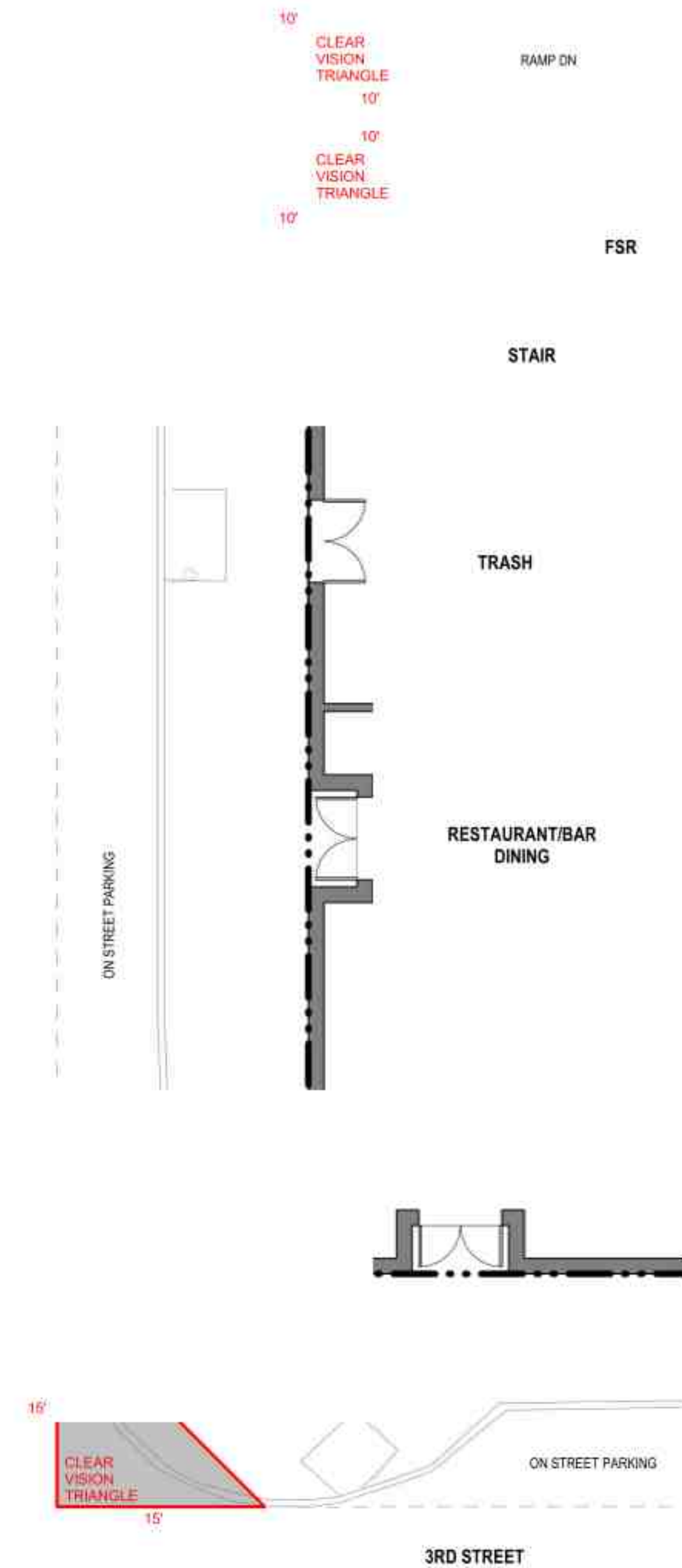
SCALE: 3/16" = 1'-0"



**SIGHT LINE FROM FORD STREET SIDEWALK**

SCALE: 3/16" = 1'-0"

FORD STREET



**PROPOSED SITE PLAN - VISION TRIANGLE**

SCALE: 1/8" = 1'-0"

STAMP

CONSULTANT

**GWENDOLYN HOTEL**  
 609 NE 3RD STREET, 611 NE 3RD STREET, 619 NE 3RD STREET  
 MCMINNVILLE, OREGON 97128

**MATERIALS BOARD**

TITLE

# DATE DESCRIPTION

REVISIONS

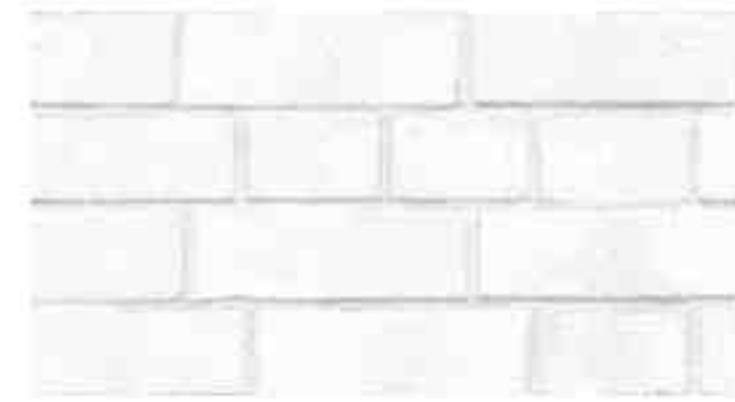
Author	Checker
DRAWN BY	CHECK BY
LAND USE	
STATUS	
07/29/2022	
DATE	
19914	
PROJECT NUMBER	



ST-1  
 STUCCO  
 "LIGHT GREY"



ST-2  
 STUCCO  
 "DARK GREY"



BR-1  
 FACE BRICK - WIRECUT TEXTURE - "WHITE"



BR-2  
 FACE BRICK - GLAZED "WHITE"



BR-3  
 FACE BRICK - "DARK GREY"

PT-3  
 PAINTED COMPOSITE PANELING  
 "LIGHT GREY"

PT-2  
 PAINTED COMPOSITE PANELING  
 "DARK GREY"

PT-1  
 PAINTED COMPOSITE PANELING  
 "RED"



FABRIC AWNING, STYLE 1



FABRIC AWNING, STYLE 2



C-1  
 PRECAST CONCRETE  
 "LIGHT GREY"



C-2  
 PRECAST CONCRETE  
 "DARK GREY"

JULIETTE BALCONY, STYLE 1  
 PRECAST CONCRETE BASE  
 RAILING FINISHES: "BLACK", "BRASS"

JULIETTE BALCONY, STYLE 2  
 RAILING FINISHES: "BLACK", "BRASS"



GLASS GUARDRAIL

STAMP

CONSULTANT

**GWENDOLYN HOTEL**  
 609 NE 3RD STREET, 611 NE 3RD STREET, 619 NE 3RD STREET  
 MCMINNVILLE, OREGON 97128

PERSPECTIVES

TITLE

# DATE DESCRIPTION

REVISIONS

Author	Checker
DRAWN BY	CHECK BY
LAND USE	
STATUS	
07/29/2022	
DATE	
19914	
PROJECT NUMBER	



MID-BLOCK STREET PERSPECTIVE ALONG 3RD STREET





STAMP

CONSULTANT

**GWENDOLYN HOTEL**  
 609 NE 3RD STREET, 611 NE 3RD STREET, 619 NE 3RD STREET  
 MCMINNVILLE, OREGON 97128

PERSPECTIVES

TITLE

#	DATE	DESCRIPTION

REVISIONS

Author	Checker

DRAWN BY	CHECK BY

LAND USE

STATUS

07/29/2022

DATE

19914

PROJECT NUMBER

STREET PERSPECTIVE LOOKING SOUTH ON FORD STREET

EAST END STREET PERSPECTIVE ALONG 3RD STREET



Otak Architects, Inc.  
808 SW Third Avenue, Suite 800  
Portland, OR 97204  
main 503.287.6825  
www.otak.com

STAMP

CONSULTANT

**GWENDOLYN HOTEL**  
609 NE 3RD STREET, 611 NE 3RD STREET, 619 NE 3RD STREET  
MCMINNVILLE, OREGON 97128

**PERSPECTIVES**

TITLE

# DATE DESCRIPTION

REVISIONS

Author Checker  
DRAWN BY CHECK BY

LAND USE

STATUS

DATE

19914

PROJECT NUMBER

© 2022 OTAK, INC.

If this drawing is not 24" x 36", it has been reduced/enlarged. Scale accordingly.

STAMP

CONSULTANT

**GWENDOLYN HOTEL**  
 609 NE 3RD STREET, 611 NE 3RD STREET, 619 NE 3RD STREET  
 MCMINNVILLE, OREGON 97128

PERSPECTIVES

TITLE

# DATE DESCRIPTION

REVISIONS

Author	Checker
DRAWN BY	CHECK BY
LAND USE	
STATUS	
07/29/2022	
DATE	
19914	
PROJECT NUMBER	

STREET PERSPECTIVE ALONG FORD STREET



PERSPECTIVE AT CORNER OF 3RD AND FORD



VIEW OF GWENDOLYN HOTEL FROM FORD ST AND 3RD STREET

STAMP

CONSULTANT

**GWENDOLYN HOTEL**  
 609 NE 3RD STREET, 611 NE 3RD STREET, 619 NE 3RD STREET  
 MCMINNVILLE, OREGON 97128

PERSPECTIVE - RENDERED

TITLE

#	DATE	DESCRIPTION

REVISIONS

Author	Checker
DRAWN BY	CHECK BY
LAND USE	
STATUS	
DATE	07/29/2022
DATE	1994
PROJECT NUMBER	