

## Section VI **STATISTICS**

### **Crime Data**

Crime rates are calculated on the number of crimes divided by the population of a given geographical area. Uniform Crime Reporting (UCR) is divided into three offense categories: **Crimes against Persons, Crimes against Property** and **Behavioral Crimes**.

#### **Crimes Against Persons**

Criminal offenses where the victim is present and the act is violent, threatening or has the potential of being physically harmed.

Murder	Kidnapping	Negligent Homicide
Robbery	Rape	Aggravated Assault
Other Sex Crimes	Simple Assault	

#### **Crimes Against Property**

Criminal offenses that involve taking something of value by theft, deception or the destruction of property.

Burglary	Fraud	Larceny
Embezzlement	Motor Vehicle Theft	Vandalism
Arson	Forgery/Counterfeit	
Sale/Purchase Possession of Stolen Property		

#### **Behavioral Crimes**

Crimes that represent society's prohibitions on engaging in certain types of activity such as criminal offenses that violates laws relating to personal conduct, responsibility and public order. Although not necessarily violent or property offenses in themselves, they may often contribute to other criminal acts.

Weapons Restriction Laws	Liquor Laws	Prostitution
Disorderly Conduct	Narcotics Laws	Curfew
Offenses against Family	Runaway Juveniles	DUII

## 2014 MPD Annual Report

PART I CRIMES	2013	2013 Reported to State	2013 Arrests		2014	2014 Reported to State	2014 Arrests		PERCENTAGE CHANGE
			Juvenile	Adult			Juvenile	Adult	
Murder	1	1	0	0	1	1	0	0	0%
Rape	16	16	1	3	7	7	1	2	-56.25%
Robbery	15	15	8	10	7	7	1	1	-53.33%
Aggravated Assault	42	35	9	22	33	32	5	18	-21.43%
Burglary	153	147	13	21	139	136	9	18	-9.15%
Larceny	972	794	76	246	900	763	56	194	-7.41%
Auto Theft	38	36	8	5	40	39	0	6	5.26%
Arson	14	12	0	0	5	4	0	0	-64.29%
<b>PART I TOTAL</b>	<b>1251</b>	<b>1056</b>	<b>115</b>	<b>307</b>	<b>1132</b>	<b>989</b>	<b>72</b>	<b>239</b>	<b>-9.51%</b>

PART II CRIMES	2013	2013 Reported to State	2013 Arrests		2014	2014 Reported to State	2014 Arrests		PERCENTAGE CHANGE
			Juvenile	Adult			Juvenile	Adult	
Simple Assaults	316	274	37	122	284	241	27	108	-10.13%
ROV/Stalker	49	49	0	24	50	50	0	35	2.04%
Kidnapping	4	4	0	2	4	4	0	2	0%
Intimidation	6	6	0	1	2	2	0	0	-66.67%
Forgery/ Counterfeit	49	26	1	19	63	32	2	14	28.57%
Fraud	147	103	6	52	198	161	5	41	34.69%
Embezzlement	0	0	0	0	0	0	0	0	0%
Stolen Property	22	13	2	15	8	5	0	9	-63.64%
Extortion	0	0	0	0	3	3	0	0	100%
Vandalism	654	453	32	58	457	363	9	54	-30.12%
Weapons	27	26	8	17	31	26	4	21	14.82%
Prostitution	1	1	0	0	6	6	0	1	100%
Sex Offenses	69	51	6	32	58	48	4	28	-15.94%
Narcotics/ Drugs	428	334	59	338	349	282	39	277	-18.46%
Gambling	0	0	0	0	0	0	0	0	0%
Offenses Against Family	19	19	0	10	8	8	0	5	-57.90%
Driving Under the Influence	126	125	0	125	127	127	0	127	.80%
Liquor Laws	71	67	21	82	41	39	18	42	-42.25%
Disorderly Conduct	176	158	22	103	178	155	28	136	1.14%

## 2014 MPD Annual Report

Trespass	86	78	23	49	124	118	38	86	44.19%
UEMV	136	25	25	12	190	28	0	9	39.71%
Curfew	44	43	85	0	38	36	72	0	-13.64%
Tobacco	20	16	24	0	4	4	6	0	-80%
Runaway	76	76	0	0	85	84	0	0	11.84%
Animal Problems	86	85	0	1	77	77	0	1	-10.47%
All other	65	65	7	46	36	34	1	27	-44.62%
<b>PART II TOTAL</b>	<b>2677</b>	<b>2097</b>	<b>358</b>	<b>1108</b>	<b>2418</b>	<b>1933</b>	<b>253</b>	<b>1023</b>	<b>-9.68%</b>

PART III CRIME	2013	2013 Reported to State	2013 Arrests		2014	2014 Reported to State	2014 Arrests		PERCENTAGE CHANGE
			Juvenile	Adult			Juvenile	Adult	
Escape	6	6	3	2	3	3	0	4	-50%
Hit and Run	150	149	1	26	188	187	0	24	25.33%
Reckless Driving	24	22	0	22	48	43	1	43	100%
Eluding	6	5	0	5	7	7	0	5	16.67%
DWS Misd/Fel	26	24	0	26	41	40	0	41	57.69%
Fail to Display Operators License	6	6	0	6	6	5	0	6	0%
Garbage/Litter	15	15	3	11	8	8	0	9	-46.67%
Protective Custody	81	80	9	72	95	95	12	83	17.28%
Warrant/Fugitive	583	557	65	535	652	623	79	586	11.84%
Sex Offender	16	16	0	15	19	19	0	16	18.75%
Motor Vehicle Recovered	2	2	0	0	0	0	0	0	-100%
Stolen Property Recovered	2	2	0	0	0	0	0	0	-100%
Non-Criminal Domestic	216	216	0	0	220	219	0	0	1.85%
<b>PART III TOTAL</b>	<b>1133</b>	<b>1100</b>	<b>81</b>	<b>720</b>	<b>1287</b>	<b>1249</b>	<b>92</b>	<b>817</b>	<b>13.59%</b>
<b>PART I TOTAL</b>	<b>1251</b>	<b>1056</b>	<b>115</b>	<b>307</b>	<b>1132</b>	<b>989</b>	<b>72</b>	<b>239</b>	<b>-9.51%</b>
<b>PART II TOTAL</b>	<b>2677</b>	<b>2097</b>	<b>358</b>	<b>1108</b>	<b>2418</b>	<b>1933</b>	<b>253</b>	<b>1023</b>	<b>-9.68%</b>
<b>PART III TOTAL</b>	<b>1133</b>	<b>1100</b>	<b>81</b>	<b>720</b>	<b>1287</b>	<b>1249</b>	<b>92</b>	<b>817</b>	<b>13.59%</b>
<b>GRAND TOTAL</b>	<b>5061</b>	<b>4253</b>	<b>554</b>	<b>2135</b>	<b>4837</b>	<b>4171</b>	<b>417</b>	<b>2079</b>	<b>-4.43%</b>

# 2014 MPD Annual Report

## CRIMES

### CRIMES AGAINST PERSONS

	2010	2011	2012	2013	2014
Willful Murder	1	1	1	1	1
Negligent Homicide	0	0	0	0	0
Rape	11	13	12	16	7
Other Sex Offenses	82	66	69	69	58
Kidnapping	9	2	5	4	4
Robbery	11	13	17	15	7
Aggravated Assault	34	36	41	42	33
Simple Assault	124	327	308	316	284
<b>TOTAL</b>	<b>272</b>	<b>458</b>	<b>453</b>	<b>463</b>	<b>394</b>

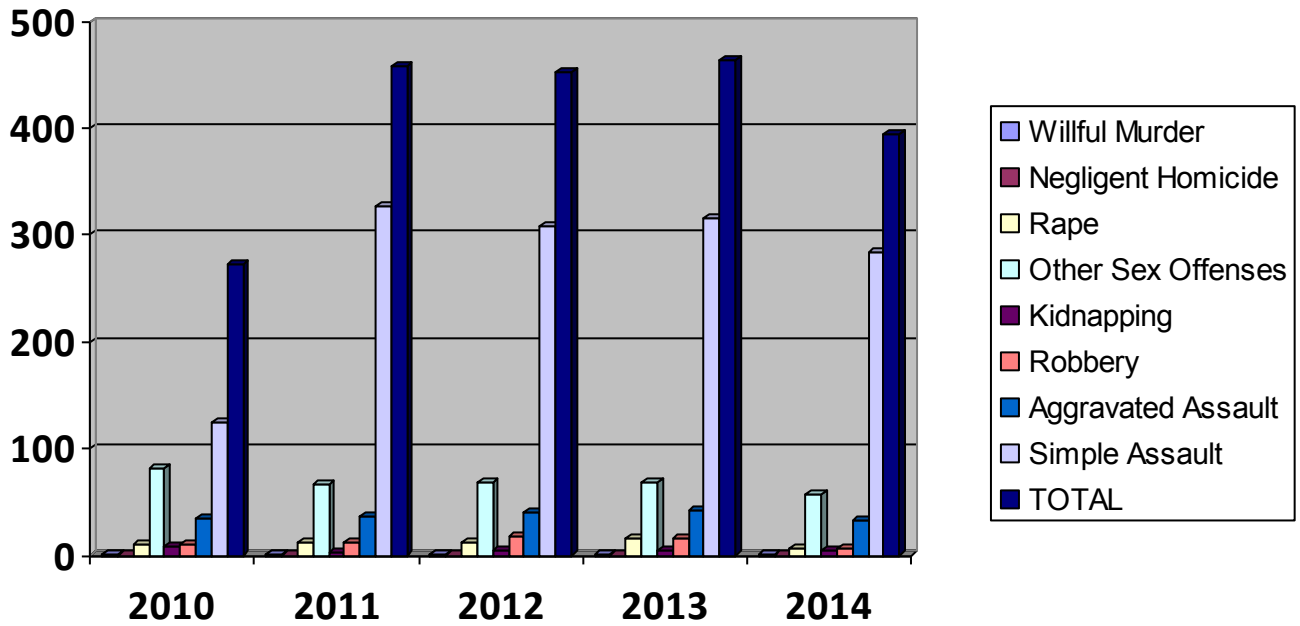
### CRIMES AGAINST PROPERTY

	2010	2011	2012	2013	2014
Burglary	164	221	178	153	139
Larceny	1010	1074	902	972	900
Motor Vehicle Theft	60	38	46	38	40
Arson	11	8	10	14	5
Forgery/Counterfeiting	51	49	29	49	63
Fraud	113	109	109	147	198
Embezzlement	0	0	0	0	0
Stolen Property	15	10	18	22	8
Extortion	0	0	1	0	3
Vandalism	827	833	708	654	457
<b>TOTAL</b>	<b>2251</b>	<b>2342</b>	<b>2001</b>	<b>2049</b>	<b>1813</b>

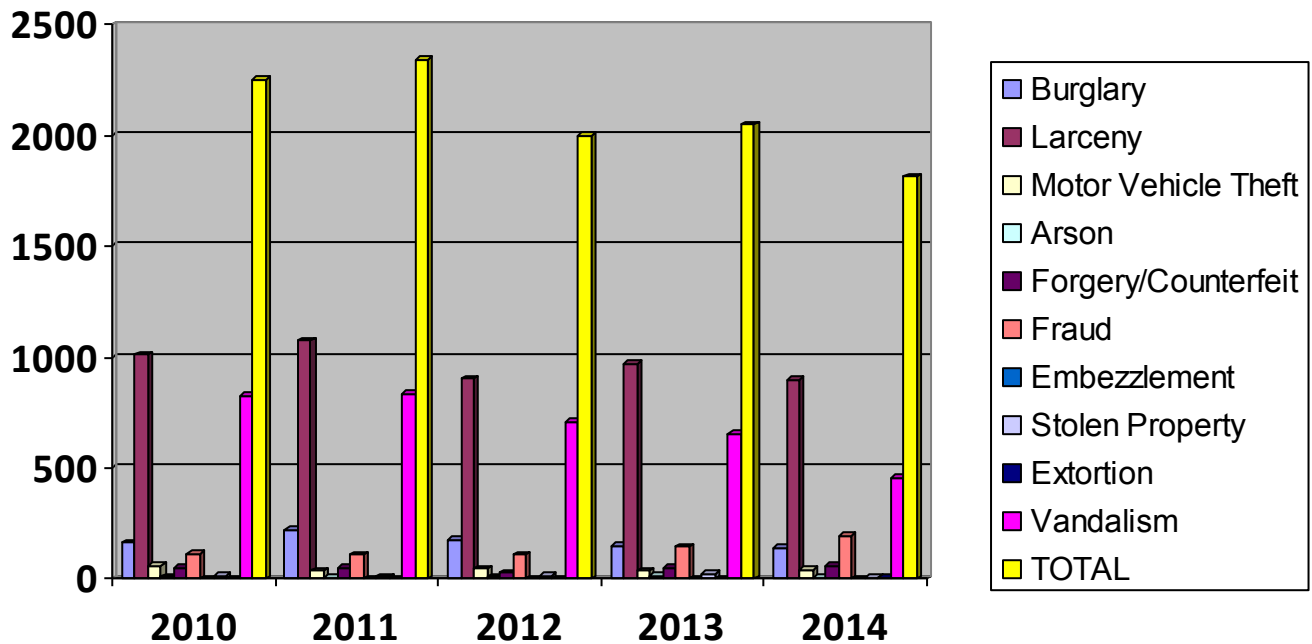
### BEHAVIORAL CRIMES

	2010	2011	2012	2013	2014
Weapon Laws	26	24	29	27	31
Prostitution	2	0	0	1	6
Drug Laws	327	293	352	428	349
Offenses Against Family	19	17	26	19	8
Driving Under the Influence	131	132	140	126	127
Liquor Laws	144	140	134	71	41
Disorderly Conduct	133	151	172	176	178
Curfew	78	88	76	44	38
Runaway Juveniles	92	73	89	76	85
<b>TOTAL</b>	<b>952</b>	<b>918</b>	<b>1018</b>	<b>968</b>	<b>863</b>

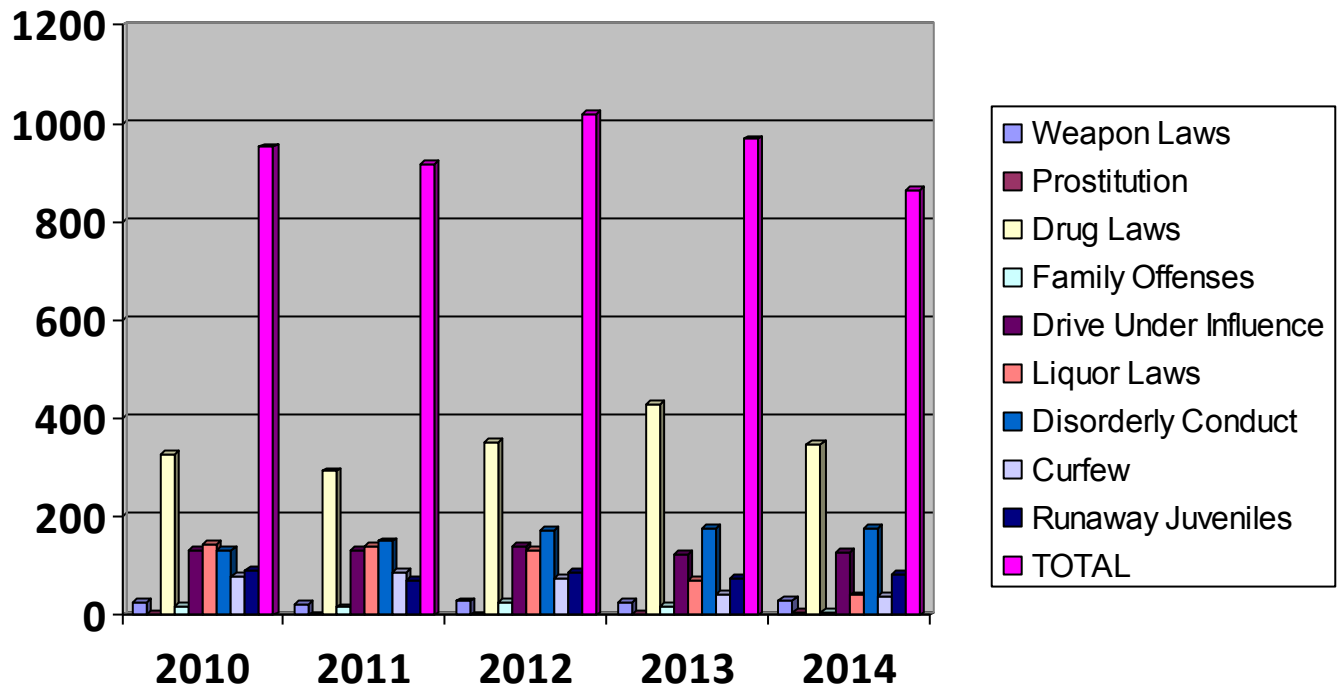
**CRIMES AGAINST PERSONS**



**CRIMES AGAINST PROPERTY**

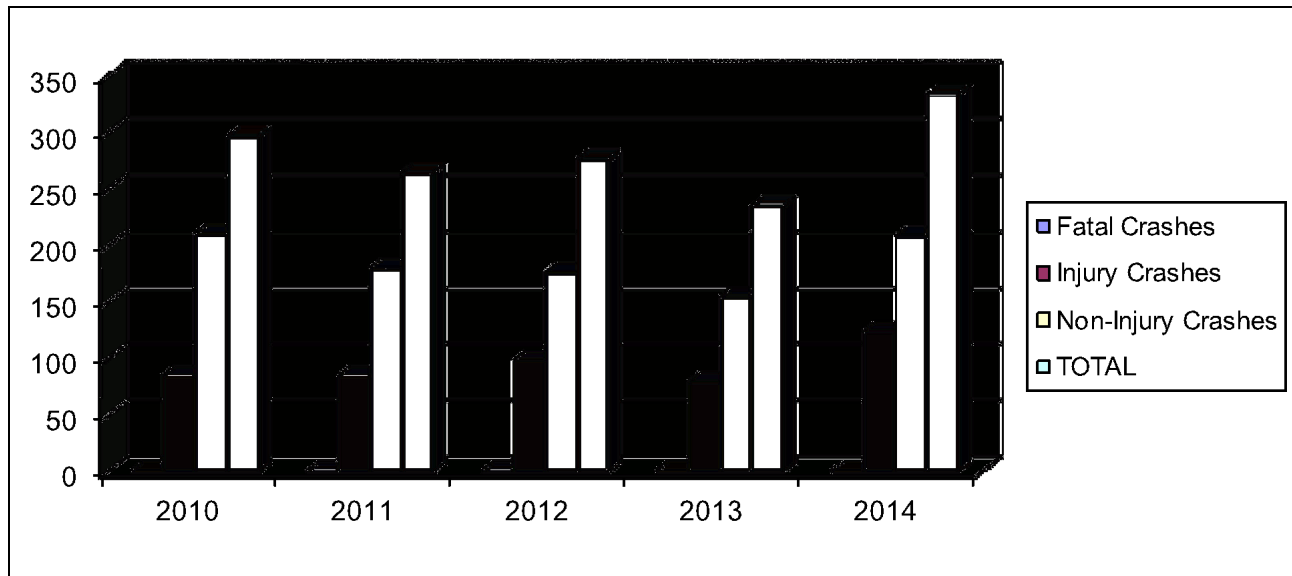


**BEHAVIORAL CRIMES**



**TRAFFIC DATA**

**Crash Data**



**Enforcement Data**

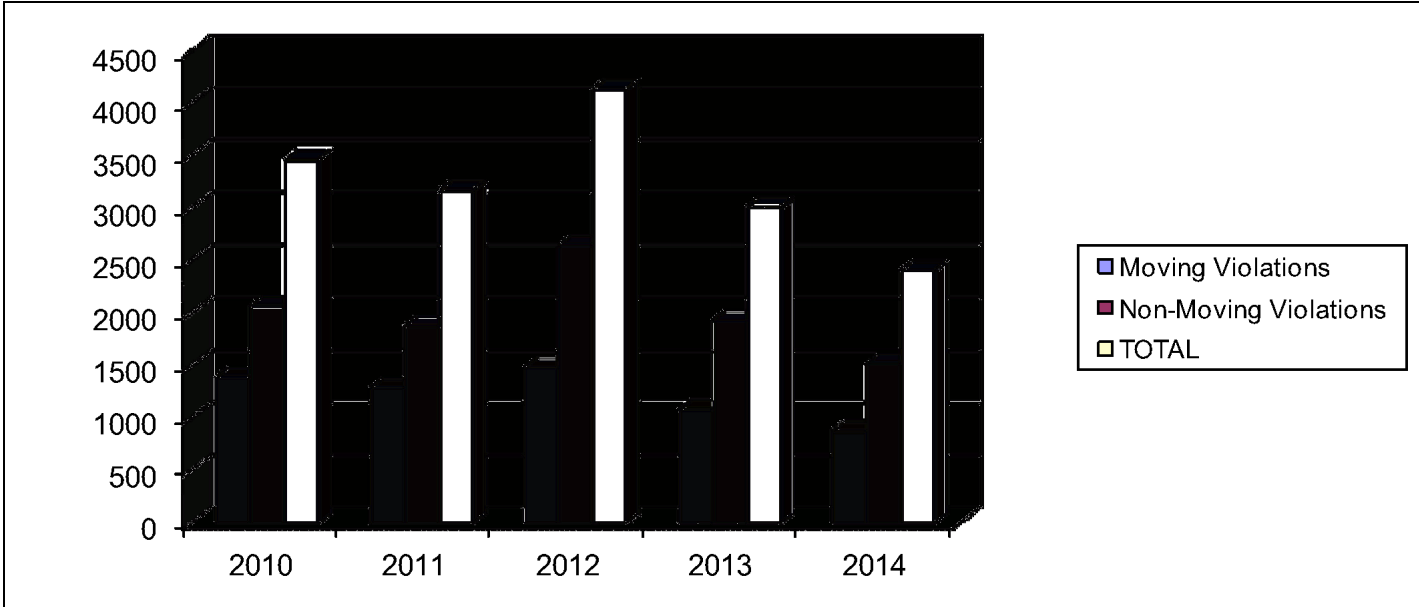
<b>CRASHES</b>	<b>2010</b>	<b>2011</b>	<b>2012</b>	<b>2013</b>	<b>2014</b>
Fatal Crashes	1	0	0	1	1
Injury Crashes	85	85	99	80	124
Non-Injury Crashes	211	180	177	154	209
<b>TOTAL</b>	<b>297</b>	<b>265</b>	<b>276</b>	<b>235</b>	<b>334</b>

<b>CITATIONS BY VIOLATIONS</b>	<b>2010</b>	<b>2011</b>	<b>2012</b>	<b>2013</b>	<b>2014</b>
Moving Violations	1394	1292	1484	1083	884
Non-Moving Violations	2075	1879	2653	1929	1526
<b>TOTAL</b>	<b>3469</b>	<b>3171</b>	<b>4137</b>	<b>3012</b>	<b>2410</b>

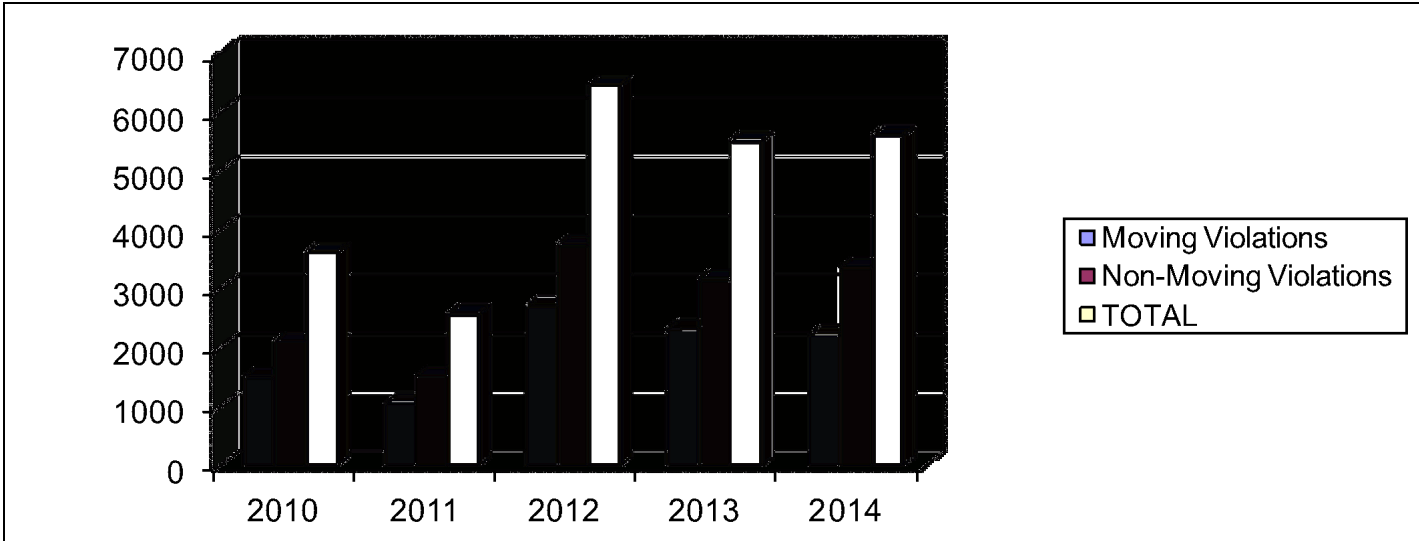
<b>WARNINGS BY VIOLATIONS</b>	<b>2010</b>	<b>2011</b>	<b>2012</b>	<b>2013</b>	<b>2014</b>
Moving Violations	1509	1053	2703	2339	2221
Non-Moving Violations	2112	1530	3741	3171	3372
<b>TOTAL</b>	<b>3621</b>	<b>2583</b>	<b>6444</b>	<b>5510</b>	<b>5593</b>

**TRAFFIC**

**Citations by Violation**



**Warnings by Violation**





# 2014 MPD Annual Report

## CALLS FOR SERVICE DATA

In previous years the information shown in this section was the actual requests for police officer service from the community. These numbers did not include officer-initiated activity (i.e. traffic stops, follow up contacts, etc). This year we chose to include all calls for service.

### Calls-For-Service

Call Type	2013	2014
Emergency 911 Hang-up/Open Line	185	192
Abandon Vehicle	362	414
Alarm/Audible	817	837
Alarm/Commercial	8	8
Alarm/Hold-up	32	22
Alarm/Residential	4	4
Alarm/Silent	39	29
Animal Abuse/Neglect	131	146
Animal Bite	9	12
Animal Injured	64	52
Animal Nuisance	147	128
Area Check	579	661
Arson	8	4
Assault Cold	91	73
Assault/Now or Just Occurred	50	39
Assault/Rape	7	12
Assist Disabled Vehicle	92	115
Assist Outside Agency	439	402
Assist Public Lockout	159	130
Attempt to Locate	22	16
Bombing/Threat	3	4
Burglary/Attempt	33	33
Burglary/Cold Report	136	151
Burglary/Just Occurred	53	58
Civil Complaint	523	337
Cover Car/Back up	35	21
Criminal Mischief/Cold Report	414	275
Criminal Mischief/Just Occurred	72	74
Curfew	35	43
Custodial Interference/Cold	82	88
Custodial Interference/Now or Just Occurred	17	29
Death Investigation	5	4
Domestic/Family	103	83
Domestic/Family Weapon	516	517
Driving Under the Influence	206	233
Driving While Suspended	86	79
Drug Violation	371	339
Dumping/Illegal	16	15
Escapee/Walk away	2	2
Extra Patrol	87	93
Field Investigation Contact	1303	1459
Fight	84	106
Follow Up	3068	3561
Found Child	27	19

# 2014 MPD Annual Report

Call Type	2013	2014
Fraud	267	384
Harassment	644	591
Hit and Run	221	279
Illegal Burn	4	4
Impound Vehicle	2	1
Information Complaint	618	701
Intoxicated Person	111	117
Juvenile Abuse/Neglect	515	518
Kidnap	2	1
Medical/Fire Assist	270	276
Menacing	26	17
Mental/Violent	14	19
Mental/Non-violent	84	53
Minor In Possession	61	39
Miscellaneous	36	30
Miscellaneous Arrest	362	338
Miscellaneous Disturbance	399	422
Missing Person	71	68
Missing Person Found	15	12
Noise Complaint	543	604
Open Container	8	4
Ordinance City/Co	175	164
Overdose/Poisoning	37	36
Parking Complaint	93	137
Phone Message	1335	1241
Premise/Unsecure	72	120
Police Officer Detail	149	154
Property Lost/Found	481	456
Prowler	61	55
Public Health/Safety	12	9
Reckless Driver	255	275
Recovered Stolen	12	16
Restraining Order Now/Just Occurred	16	25
Restraining Order Violation/Cold	81	55
Robbery	12	7
Runaway	108	112
Search Warrant	9	13
Sex Crime/Now	1	0
Sex Crime/Misc	109	108
Shooting-Stabbing	4	4
Standby	1	1
Stolen Vehicles	56	68
Street Racing	3	4
Suicide	90	122
Suicide/Attempt	44	52
Suspicious Person/Vehicle	1474	1503
Theft Attempt	29	28
Theft/Cold	766	777
Theft/Now or Just Occurred	223	159
Traffic Collision/Injury	171	162
Traffic Collision/Non Injury	185	263
Traffic Complaint/Miscellaneous	89	76
Traffic Hazard	238	316

## 2014 MPD Annual Report

<b>Call Type</b>	<b>2013</b>	<b>2014</b>
Traffic Stop	6786	6340
Transport	51	57
Trespass/Cold	79	90
Trespass/Now	119	204
Unknown Problem	26	24
Unwanted	137	134
Warrant Service	534	556
Weapons Complaint	92	72
Welfare Check	409	431
<b>Total</b>	<b>29,419</b>	<b>29,823</b>
<b>Change</b>		<b>1.37%</b>

j