

1

2

3

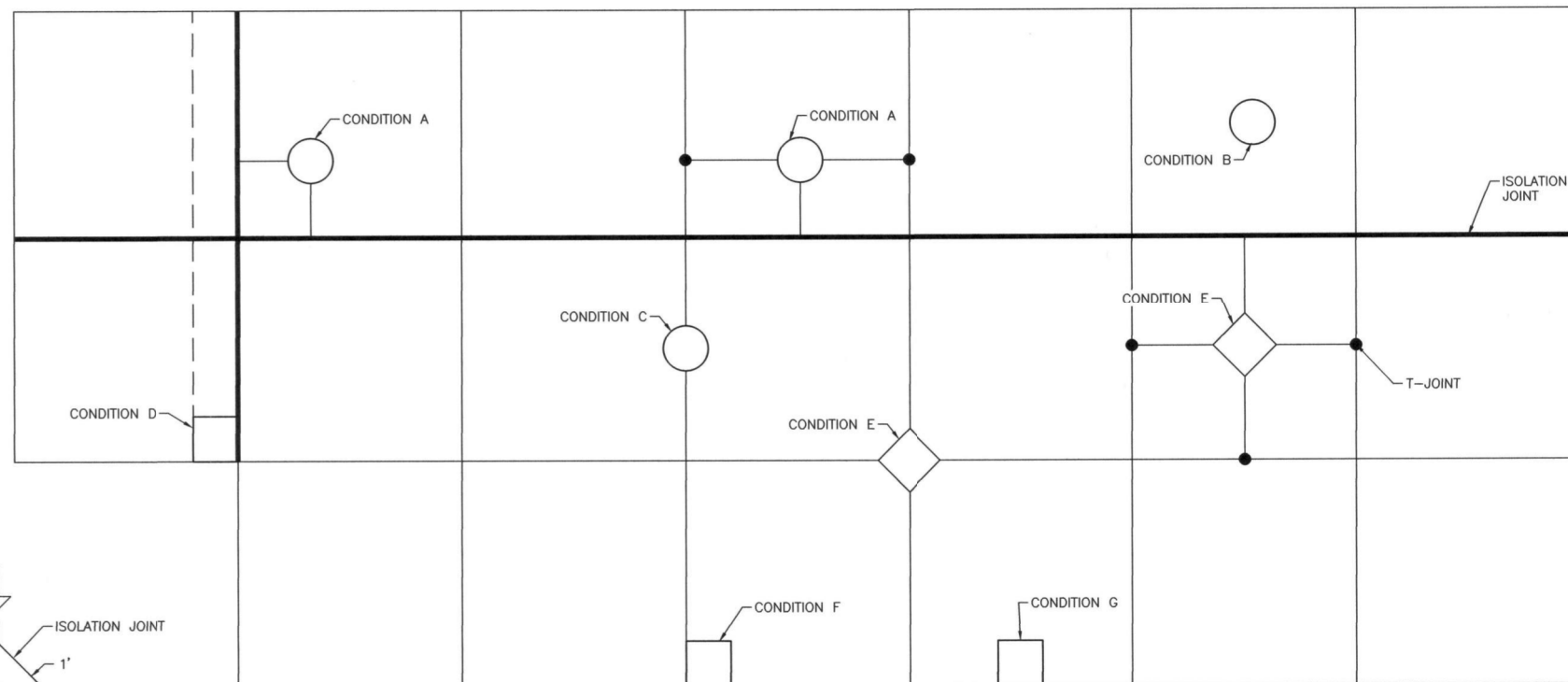
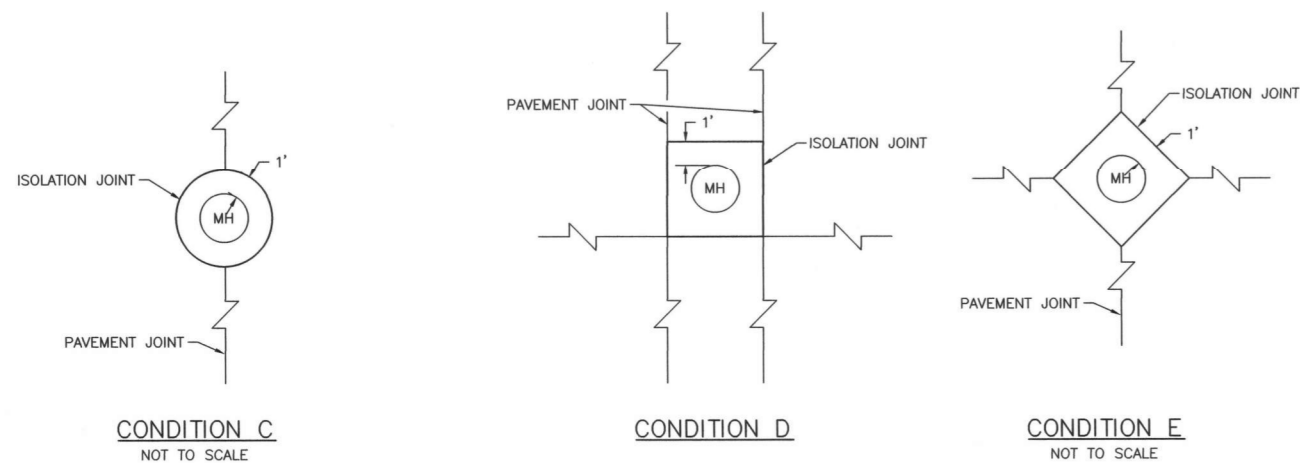
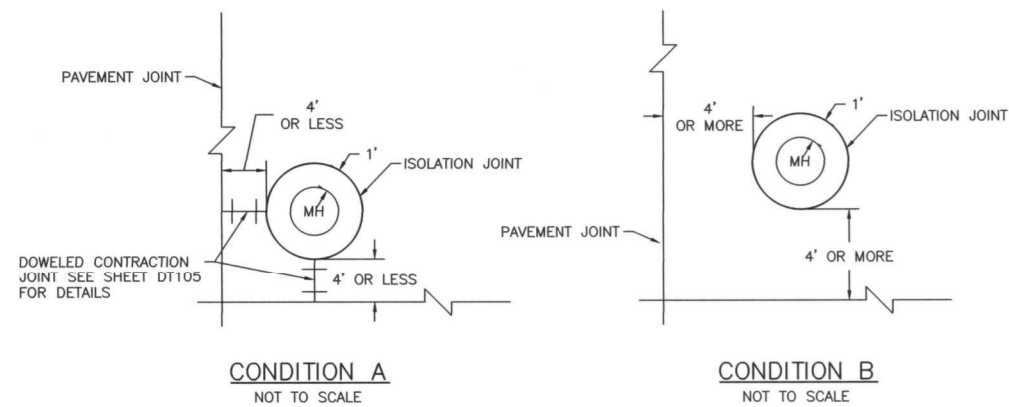
4

5

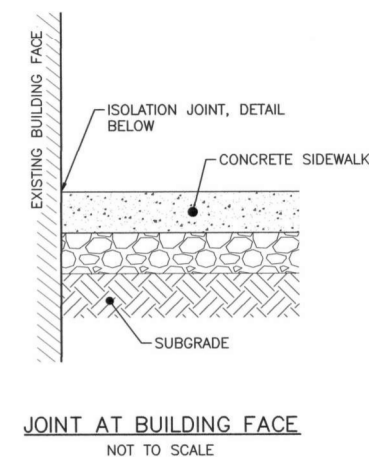
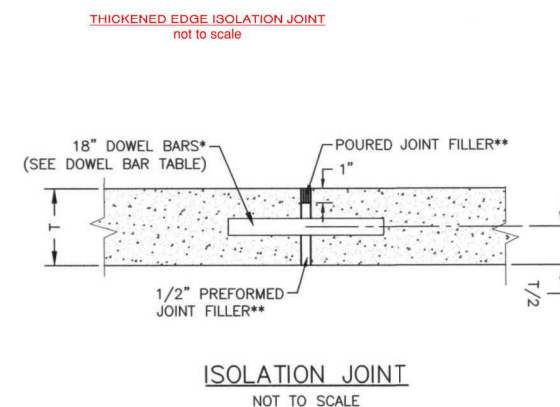
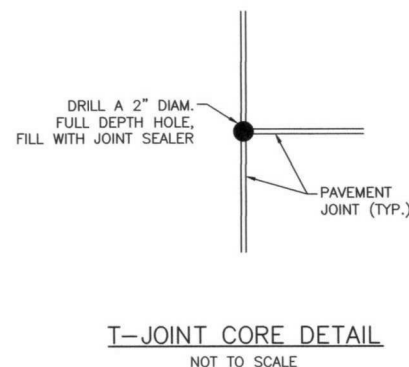
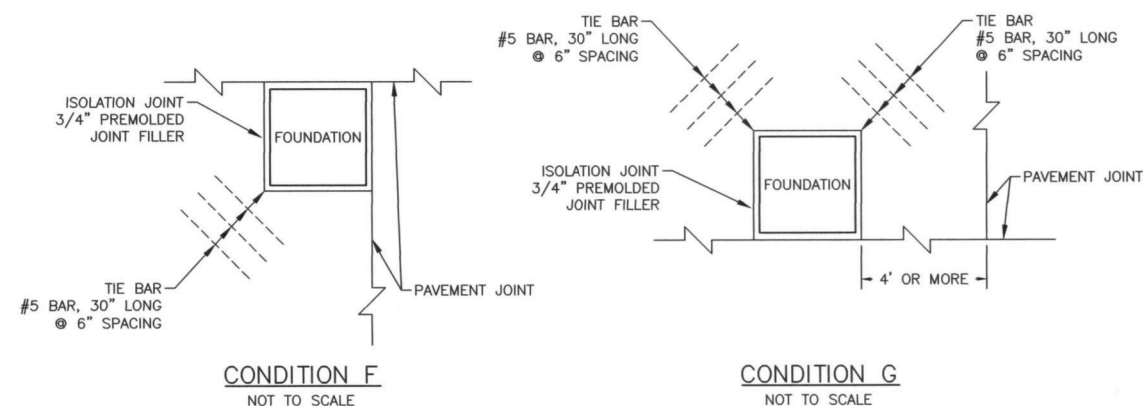
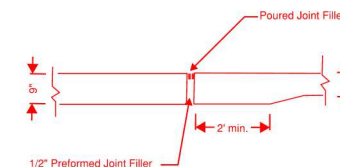
6

7

8



- NOTES:
1. SEE SHEETS SD101 THRU SD204 FOR STORM SEWER AND SANITARY SEWER CONSTRUCTION
  2. SEE SHEETS JT101 THRU JT206 FOR JOINTING PLAN AND COLLAR ORIENTATION.
  3. SEE SHEET DT 105 FOR JOINT DETAILS AND INFORMATION.



- \* NOT REQUIRED AT BOXOUTS, BUILDING FACES, OR SIDEWALK INTERFACE.
- \*\* WIDTH AND POURED JOINT FILLER NOT APPLICABLE AT SIDEWALK INTERFACE.



**AS-CONSTRUCT DRAWINGS**  
**OBEC**  
**5/2/18**

ISSUE DATE DESCRIPTION

PROJECT MANAGER STEPHANIE SERPICO, P.E.

PROJECT NUMBER 2016-8



**CITY OF MCMINNVILLE**  
**NE ALPINE AVENUE IMPROVEMENTS**  
**ISOLATION JOINT DETAILS**

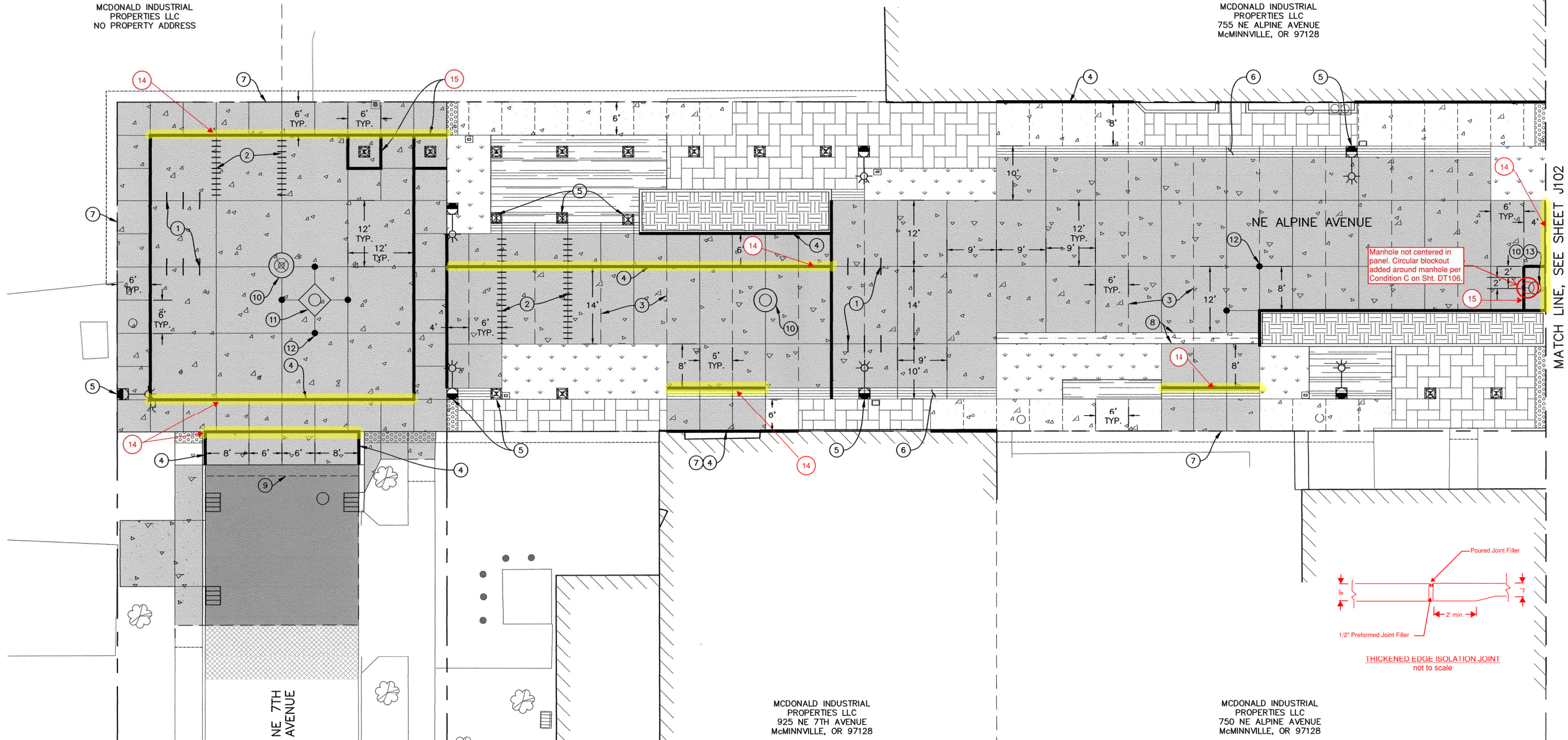
DATE 12/2016

SHEET **DT106**



MCDONALD INDUSTRIAL  
PROPERTIES LLC  
NO PROPERTY ADDRESS

MCDONALD INDUSTRIAL  
PROPERTIES LLC  
755 NE ALPINE AVENUE  
McMINNVILLE, OR 97128



MATCH LINE, SEE SHEET J102

GENERAL NOTES:

- 1. REFER TO GRADING PLANS, SHEETS GR101-GR103 FOR STATION, OFFSET, AND ELEVATION INFORMATION FOR ALL CURBS, GRADING, AND CRITICAL POINTS NOT SHOWN ON THIS PLAN.
- 2. REFER TO SURFACING PLANS, SHEETS SU101-SU103 FOR ALL SURFACING COLORING, FINISHING AND MATERIAL INFORMATION NOT SHOWN ON THIS PLAN.
- 3. REFER TO STORM DRAIN PLAN AND PROFILE, SHEETS SD101-SD104 FOR STORM DRAINAGE AND SANITARY SEWER CONSTRUCTION, AND UTILITY PLANS, SHEET UT101 FOR PRIVATE UTILITY COORDINATION.

JOINTING NOTES:

- 1. CONTRACTION, CONSTRUCTION, CONTACT, WEAKENED PLANE, AND ISOLATION JOINTS IN THE ROADWAY SHALL BE CONSTRUCTED PER ODOT STANDARD SPECIFICATIONS, PROJECT SPECIFICATIONS, THESE PLANS, AND DETAILS ON SHEETS DT105 AND DT106. DEVIATIONS FROM THESE PLANS SHALL BE APPROVED BY THE ENGINEER.
- 2. ISOLATION JOINTS AROUND STORMWATER, SANITARY, AND OTHER PRIVATE UTILITY STRUCTURES SHALL BE PER DETAILS ON SHEET DT106. THE CONDITION IS DEPENDENT ON THE JOINT LOCATIONS AND HAS BEEN IDENTIFIED ON THESE PLANS. IF CONDITIONS DIFFER IN FIELD, OR JOINTING IS NOT INDICATED ON THESE PLANS, JOINTING SHALL BE APPROVED BY THE ENGINEER.

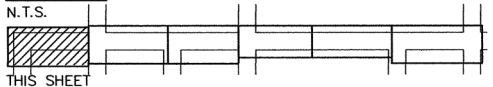
LEGEND:

- ASPHALT APPROACH
- GRIND AND INLAY
- PEDESTRIAN PAVER SURFACING
- DECOMPOSED GRANITE SURFACING
- LANDSCAPING
- PLAIN CONCRETE PAVEMENT, DOWELED
- CONCRETE WALK
- STORMWATER PLANTER
- 2' WIDTH TRUNCATED DOME DETECTABLE WARNING SURFACE
- 2' WIDTH TACTILE SURFACE, SEE CONSTRUCTION NOTE 6
- TRANSVERSE CONTRACTION JOINT OR LONGITUDINAL WEAKENED PLANE, SEE CONSTRUCTION NOTES 1 & 2
- ARCHITECTURAL EDGE, SEE CONSTRUCTION NOTE 3
- ISOLATION JOINT, SEE CONSTRUCTION NOTE 4
- TOOLED "DUMMY" JOINT AT 6' NOM. INTERVALS PER ODOT STANDARD DRAWING RD720

CONSTRUCTION NOTES:

- 1. CONSTRUCT LONGITUDINAL JOINT (WEAKENED PLANE OR CONTACT JOINT, SEE JOINTING NOTES THIS SHEET), PER DETAIL ON SHEET DT105, TYPICAL.
- 2. CONSTRUCT TRANSVERSE JOINT (CONSTRUCTION OR CONTRACTION, SEE JOINTING NOTES THIS SHEET), PER DETAIL ON SHEET DT105, TYPICAL.
- 3. CONSTRUCT ARCHITECTURAL EDGE PER DETAIL ON SHEET DT105, TYPICAL.
- 4. CONSTRUCT ISOLATION JOINT PER DETAIL ON SHEET DT106, TYPICAL.
- 5. CONSTRUCT FOUNDATION BOX OUT WITH ISOLATION JOINT PER DETAIL ON SHEET DT106.
- 6. CONSTRUCT ARCHITECTURAL SURFACE TREATMENT PER DETAIL ON SHEET DT105, TYPICAL.
- 7. CONSTRUCT THICKENED PLAIN CONCRETE PAVEMENT APPROACH SLAB TO EXISTING SURFACE TRANSITION PER DETAIL ON SHEET DT105.
- 8. CONSTRUCT VALLEY GUTTER TO PLAIN CONCRETE PAVEMENT, DOWELED TRANSITION PER DETAIL ON SHEET DT105.
- 9. CONSTRUCT ASPHALT TO PLAIN CONCRETE PAVEMENT, DOWELED IMPACT SLAB PER DETAIL ON SHEET DT105.
- 10. CONSTRUCT ROUND CONCRETE BOX OUT WITH ISOLATION JOINT PER DETAIL ON SHEET DT106.
- 11. CONSTRUCT SQUARE CONCRETE BOX OUT WITH ISOLATION JOINT PER DETAIL ON SHEET DT106.
- 12. CONSTRUCT T-JOINT CORE PER DETAIL ON DT106, TYP.
- 13. INSTALL #6 BARS, 3'-6"  $\phi$  HOOP BAR AT MID DEPTH. METAL REINFORCEMENT FOR HOOP BAR SHALL BE ONE-PIECE CONSTRUCTION HAVING A MINIMUM LAP LENGTH OF 2'-0".
- 14. Thickened Edge Isolation Joint, no dowels, see detail this sheet.
- 15. Construct square concrete box with isolation joint per DT106 w/o dowels

KEY MAP



AS-CONSTRUCT DRAWINGS  
OBEC  
5/2/18

ISSUE DATE DESCRIPTION

PROJECT MANAGER STEPHANIE SERPICO, P.E.

PROJECT NUMBER 2016-8



EXPIRES: JUNE 30, 2018

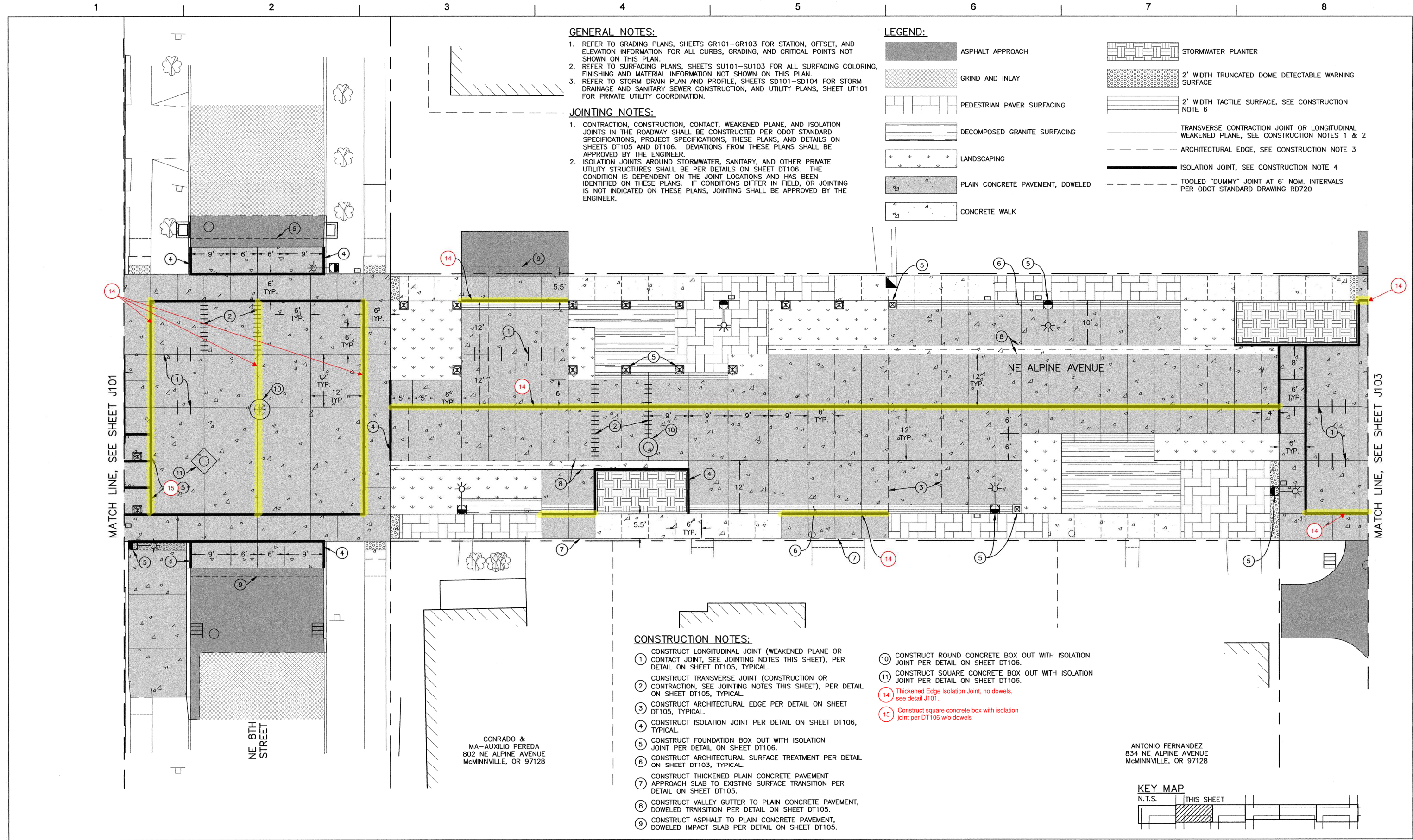
CITY OF MCMINNVILLE  
NE ALPINE AVENUE IMPROVEMENTS  
JOINTING PLAN  
NE ALPINE AVENUE STA: 199+50 TO 202+30



HORIZONTAL SCALE 0 10 20 FEET  
1" = 10'

DATE 12/2016 SHEET J101





GENERAL NOTES:

- 1. REFER TO GRADING PLANS, SHEETS GR101-GR103 FOR STATION, OFFSET, AND ELEVATION INFORMATION FOR ALL CURBS, GRADING, AND CRITICAL POINTS NOT SHOWN ON THIS PLAN.
- 2. REFER TO SURFACING PLANS, SHEETS SU101-SU103 FOR ALL SURFACING COLORING, FINISHING AND MATERIAL INFORMATION NOT SHOWN ON THIS PLAN.
- 3. REFER TO STORM DRAIN PLAN AND PROFILE, SHEETS SD101-SD104 FOR STORM DRAINAGE AND SANITARY SEWER CONSTRUCTION, AND UTILITY PLANS, SHEET UT101 FOR PRIVATE UTILITY COORDINATION.

JOINTING NOTES:

- 1. CONTRACTION, CONSTRUCTION, CONTACT, WEAKENED PLANE, AND ISOLATION JOINTS IN THE ROADWAY SHALL BE CONSTRUCTED PER ODOT STANDARD SPECIFICATIONS, PROJECT SPECIFICATIONS, THESE PLANS, AND DETAILS ON SHEETS DT105 AND DT106. DEVIATIONS FROM THESE PLANS SHALL BE APPROVED BY THE ENGINEER.
- 2. ISOLATION JOINTS AROUND STORMWATER, SANITARY, AND OTHER PRIVATE UTILITY STRUCTURES SHALL BE PER DETAILS ON SHEET DT106. THE CONDITION IS DEPENDENT ON THE JOINT LOCATIONS AND HAS BEEN IDENTIFIED ON THESE PLANS. IF CONDITIONS DIFFER IN FIELD, OR JOINTING IS NOT INDICATED ON THESE PLANS, JOINTING SHALL BE APPROVED BY THE ENGINEER.

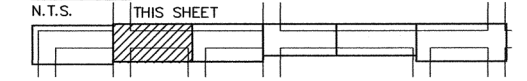
LEGEND:

- ASPHALT APPROACH
- GRIND AND INLAY
- PEDESTRIAN PAVER SURFACING
- DECOMPOSED GRANITE SURFACING
- LANDSCAPING
- PLAIN CONCRETE PAVEMENT, DOWELED
- CONCRETE WALK
- STORMWATER PLANTER
- 2' WIDTH TRUNCATED DOME DETECTABLE WARNING SURFACE
- 2' WIDTH TACTILE SURFACE, SEE CONSTRUCTION NOTE 6
- TRANSVERSE CONTRACTION JOINT OR LONGITUDINAL WEAKENED PLANE, SEE CONSTRUCTION NOTES 1 & 2
- ARCHITECTURAL EDGE, SEE CONSTRUCTION NOTE 3
- ISOLATION JOINT, SEE CONSTRUCTION NOTE 4
- TOOLED "DUMMY" JOINT AT 6' NOM. INTERVALS PER ODOT STANDARD DRAWING RD720

CONSTRUCTION NOTES:

- 1. CONSTRUCT LONGITUDINAL JOINT (WEAKENED PLANE OR CONTACT JOINT, SEE JOINTING NOTES THIS SHEET), PER DETAIL ON SHEET DT105, TYPICAL.
- 2. CONSTRUCT TRANSVERSE JOINT (CONSTRUCTION OR CONTRACTION, SEE JOINTING NOTES THIS SHEET), PER DETAIL ON SHEET DT105, TYPICAL.
- 3. CONSTRUCT ARCHITECTURAL EDGE PER DETAIL ON SHEET DT105, TYPICAL.
- 4. CONSTRUCT ISOLATION JOINT PER DETAIL ON SHEET DT106, TYPICAL.
- 5. CONSTRUCT FOUNDATION BOX OUT WITH ISOLATION JOINT PER DETAIL ON SHEET DT106.
- 6. CONSTRUCT ARCHITECTURAL SURFACE TREATMENT PER DETAIL ON SHEET DT103, TYPICAL.
- 7. CONSTRUCT THICKENED PLAIN CONCRETE PAVEMENT APPROACH SLAB TO EXISTING SURFACE TRANSITION PER DETAIL ON SHEET DT105.
- 8. CONSTRUCT VALLEY GUTTER TO PLAIN CONCRETE PAVEMENT, DOWELED TRANSITION PER DETAIL ON SHEET DT105.
- 9. CONSTRUCT ASPHALT TO PLAIN CONCRETE PAVEMENT, DOWELED IMPACT SLAB PER DETAIL ON SHEET DT105.
- 10. CONSTRUCT ROUND CONCRETE BOX OUT WITH ISOLATION JOINT PER DETAIL ON SHEET DT106.
- 11. CONSTRUCT SQUARE CONCRETE BOX OUT WITH ISOLATION JOINT PER DETAIL ON SHEET DT106.
- 14. Thickened Edge Isolation Joint, no dowels, see detail J101.
- 15. Construct square concrete box with isolation joint per DT106 w/o dowels

KEY MAP



AS-CONSTRUCT DRAWINGS  
OBEC  
5/2/18

ISSUE DATE DESCRIPTION

PROJECT MANAGER STEPHANIE SERPICO, P.E.

PROJECT NUMBER 2016-8



EXPIRES: JUNE 30, 2018

CITY OF MCMINNVILLE  
NE ALPINE AVENUE IMPROVEMENTS  
JOINTING PLAN  
NE ALPINE AVENUE STA: 202+30 TO 205+10



HORIZONTAL SCALE 0 10 20 FEET  
1" = 10'

DATE 12/2016 SHEET J102



1

2

3

4

5

6

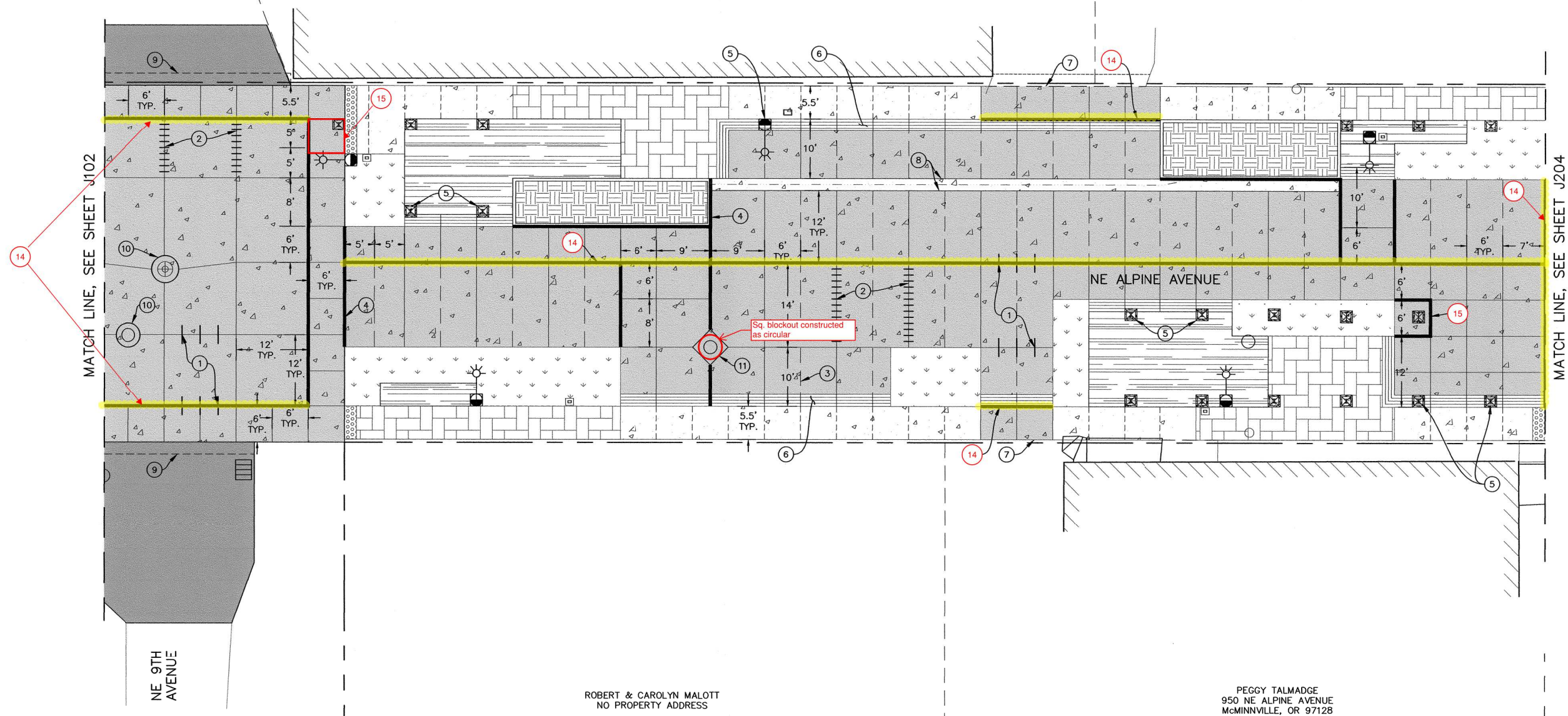
7

8

R-B RUBBER PRODUCTS INC  
825 NE ALPINE AVENUE  
McMINNVILLE, OR 97128

OHANA MAC LLC  
935 NE ALPINE AVENUE  
McMINNVILLE, OR 97128

D & D VINEYARDS INC  
NO PROPERTY ADDRESS



#### GENERAL NOTES:

- REFER TO GRADING PLANS, SHEETS GR101-GR103 FOR STATION, OFFSET, AND ELEVATION INFORMATION FOR ALL CURBS, GRADING, AND CRITICAL POINTS NOT SHOWN ON THIS PLAN.
- REFER TO SURFACING PLANS, SHEETS SU101-SU103 FOR ALL SURFACING COLORING, FINISHING AND MATERIAL INFORMATION NOT SHOWN ON THIS PLAN.
- REFER TO STORM DRAIN PLAN AND PROFILE, SHEETS SD101-SD104 FOR STORM DRAINAGE AND SANITARY SEWER CONSTRUCTION, AND UTILITY PLANS, SHEET UT101 FOR PRIVATE UTILITY COORDINATION.

#### JOINTING NOTES:

- CONTRACTION, CONSTRUCTION, CONTACT, WEAKENED PLANE, AND ISOLATION JOINTS IN THE ROADWAY SHALL BE CONSTRUCTED PER ODOT STANDARD SPECIFICATIONS, PROJECT SPECIFICATIONS, THESE PLANS, AND DETAILS ON SHEETS DT105 AND DT106. DEVIATIONS FROM THESE PLANS SHALL BE APPROVED BY THE ENGINEER.
- ISOLATION JOINTS AROUND STORMWATER, SANITARY, AND OTHER PRIVATE UTILITY STRUCTURES SHALL BE PER DETAILS ON SHEET DT106. THE CONDITION IS DEPENDENT ON THE JOINT LOCATIONS AND HAS BEEN IDENTIFIED ON THESE PLANS. IF CONDITIONS DIFFER IN FIELD, OR JOINTING IS NOT INDICATED ON THESE PLANS, JOINTING SHALL BE APPROVED BY THE ENGINEER.

#### LEGEND:

	ASPHALT APPROACH
	GRIND AND INLAY
	PEDESTRIAN PAVER SURFACING
	DECOMPOSED GRANITE SURFACING
	LANDSCAPING
	PLAIN CONCRETE PAVEMENT, DOWELED
	CONCRETE WALK

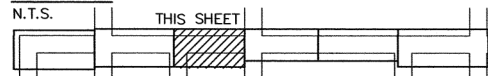
	STORMWATER PLANTER
	2' WIDTH TRUNCATED DOME DETECTABLE WARNING SURFACE
	2' WIDTH TACTILE SURFACE, SEE CONSTRUCTION NOTE 6
	TRANSVERSE CONTRACTION JOINT OR LONGITUDINAL WEAKENED PLANE, SEE CONSTRUCTION NOTES 1 & 2
	ARCHITECTURAL EDGE, SEE CONSTRUCTION NOTE 3
	ISOLATION JOINT, SEE CONSTRUCTION NOTE 4
	TOOLED "DUMMY" JOINT AT 6' NOM. INTERVALS PER ODOT STANDARD DRAWING RD720

#### CONSTRUCTION NOTES:

- CONSTRUCT LONGITUDINAL JOINT (WEAKENED PLANE OR CONTACT JOINT, SEE JOINTING NOTES THIS SHEET), PER DETAIL ON SHEET DT105, TYPICAL.
- CONSTRUCT TRANSVERSE JOINT (CONSTRUCTION OR CONTRACTION, SEE JOINTING NOTES THIS SHEET), PER DETAIL ON SHEET DT105, TYPICAL.
- CONSTRUCT ARCHITECTURAL EDGE PER DETAIL ON SHEET DT105, TYPICAL.
- CONSTRUCT ISOLATION JOINT PER DETAIL ON SHEET DT106, TYPICAL.
- CONSTRUCT FOUNDATION BOX OUT WITH ISOLATION JOINT PER DETAIL ON SHEET DT106.
- CONSTRUCT ARCHITECTURAL SURFACE TREATMENT PER DETAIL ON SHEET DT103, TYPICAL.
- CONSTRUCT THICKENED PLAIN CONCRETE PAVEMENT APPROACH SLAB TO EXISTING SURFACE TRANSITION PER DETAIL ON SHEET DT105.
- CONSTRUCT VALLEY GUTTER TO PLAIN CONCRETE PAVEMENT, DOWELED TRANSITION PER DETAIL ON SHEET DT105.
- CONSTRUCT ASPHALT TO PLAIN CONCRETE PAVEMENT, DOWELED IMPACT SLAB PER DETAIL ON SHEET DT105.

- CONSTRUCT ROUND CONCRETE BOX OUT WITH ISOLATION JOINT PER DETAIL ON SHEET DT106.
- CONSTRUCT SQUARE CONCRETE BOX OUT WITH ISOLATION JOINT PER DETAIL ON SHEET DT106.
- Thickened Edge Isolation Joint, no dowels, see detail J101.
- Construct square concrete box with isolation joint per DT106 w/o dowels

#### KEY MAP



AS-CONSTRUCT DRAWINGS  
OBEC  
5/2/18

ISSUE DATE DESCRIPTION

PROJECT MANAGER STEPHANIE SERPICO, P.E.

PROJECT NUMBER 2016-8



CITY OF MCMINNVILLE  
NE ALPINE AVENUE IMPROVEMENTS  
JOINTING PLAN

NE ALPINE AVENUE STA: 205+10 TO 207+50.09



HORIZONTAL SCALE  
0 10 20 FEET  
1" = 10'

DATE 12/2016 SHEET J103



**GENERAL NOTES:**

1. REFER TO GRADING PLANS, SHEETS GR204-GR206 FOR STATION, OFFSET, AND ELEVATION INFORMATION FOR ALL CURBS, GRADING, AND CRITICAL POINTS NOT SHOWN ON THIS PLAN.
2. REFER TO SURFACING PLANS, SHEETS SU204-SU206 FOR ALL SURFACING COLORING, FINISHING AND MATERIAL INFORMATION NOT SHOWN ON THIS PLAN.
3. REFER TO STORM DRAIN PLAN AND PROFILE, SHEETS SD203-SD204 FOR STORM DRAINAGE AND SANITARY SEWER CONSTRUCTION, AND UTILITY PLANS, SHEET UT202 FOR PRIVATE UTILITY COORDINATION.

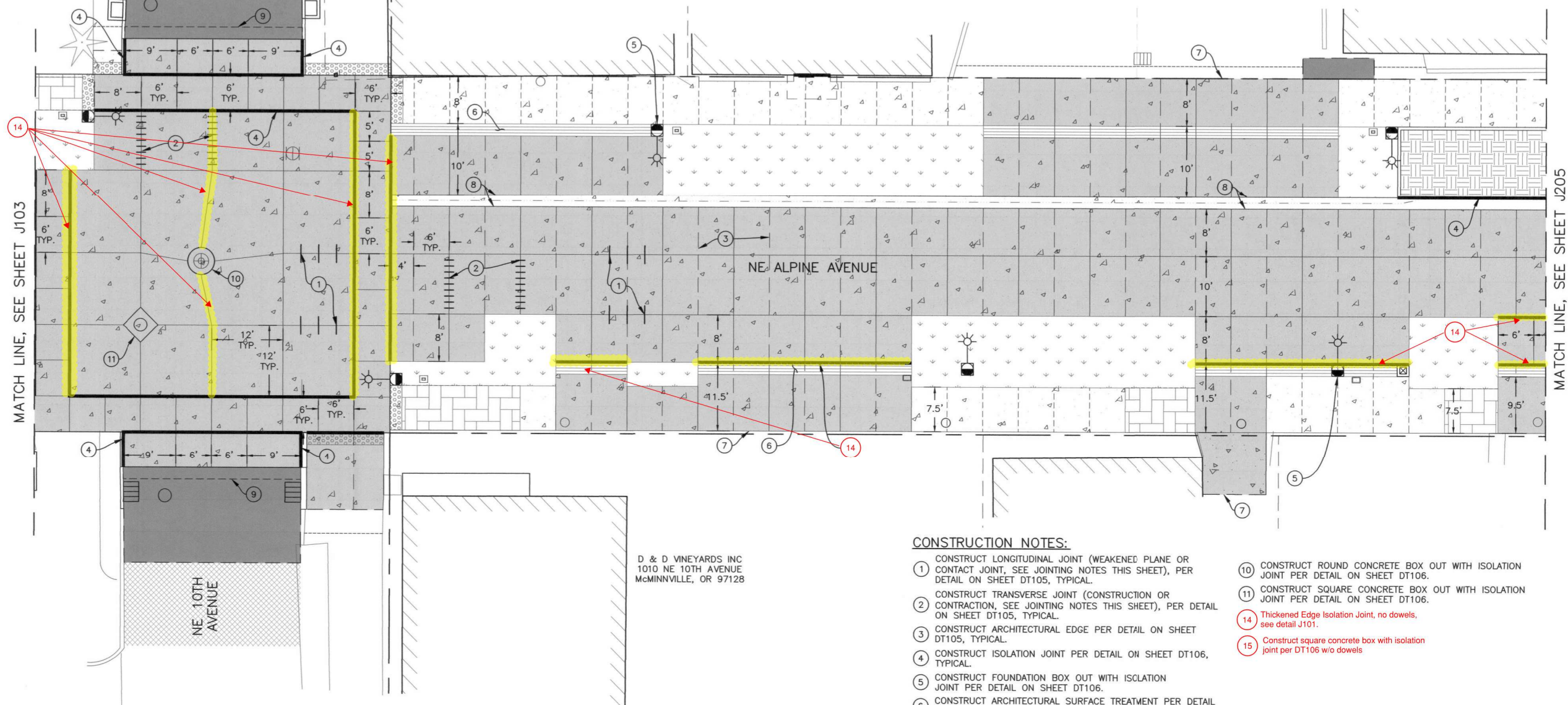
**JOINTING NOTES:**

1. CONTRACTION, CONSTRUCTION, CONTACT, WEAKENED PLANE, AND ISOLATION JOINTS IN THE ROADWAY SHALL BE CONSTRUCTED PER ODOT STANDARD SPECIFICATIONS, PROJECT SPECIFICATIONS, THESE PLANS, AND DETAILS ON SHEETS DT105 AND DT106. DEVIATIONS FROM THESE PLANS SHALL BE APPROVED BY THE ENGINEER.
2. ISOLATION JOINTS AROUND STORMWATER, SANITARY, AND OTHER PRIVATE UTILITY STRUCTURES SHALL BE PER DETAILS ON SHEET DT106. THE CONDITION IS DEPENDENT ON THE JOINT LOCATIONS AND HAS BEEN IDENTIFIED ON THESE PLANS. IF CONDITIONS DIFFER IN FIELD, OR JOINTING IS NOT INDICATED ON THESE PLANS, JOINTING SHALL BE APPROVED BY THE ENGINEER.

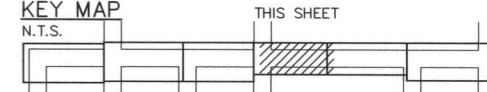
**LEGEND:**

- ASPHALT APPROACH
- GRIND AND INLAY
- PEDESTRIAN PAVER SURFACING
- DECOMPOSED GRANITE SURFACING
- LANDSCAPING
- PLAIN CONCRETE PAVEMENT, DOWELED
- CONCRETE WALK

- STORMWATER PLANTER
- 2' WIDTH TRUNCATED DOME DETECTABLE WARNING SURFACE
- 2' WIDTH TACTILE SURFACE, SEE CONSTRUCTION NOTE 6
- TRANSVERSE CONTRACTION JOINT OR LONGITUDINAL WEAKENED PLANE, SEE CONSTRUCTION NOTES 1 & 2
- ARCHITECTURAL EDGE, SEE CONSTRUCTION NOTE 3
- ISOLATION JOINT, SEE CONSTRUCTION NOTE 4
- TOOLED "DUMMY" JOINT AT 6' NOM. INTERVALS PER ODOT STANDARD DRAWING RD720

**CONSTRUCTION NOTES:**

1. CONSTRUCT LONGITUDINAL JOINT (WEAKENED PLANE OR CONTACT JOINT, SEE JOINTING NOTES THIS SHEET), PER DETAIL ON SHEET DT105, TYPICAL.
2. CONSTRUCT TRANSVERSE JOINT (CONSTRUCTION OR CONTRACTION, SEE JOINTING NOTES THIS SHEET), PER DETAIL ON SHEET DT105, TYPICAL.
3. CONSTRUCT ARCHITECTURAL EDGE PER DETAIL ON SHEET DT105, TYPICAL.
4. CONSTRUCT ISOLATION JOINT PER DETAIL ON SHEET DT106, TYPICAL.
5. CONSTRUCT FOUNDATION BOX OUT WITH ISOLATION JOINT PER DETAIL ON SHEET DT106.
6. CONSTRUCT ARCHITECTURAL SURFACE TREATMENT PER DETAIL ON SHEET DT103, TYPICAL.
7. CONSTRUCT THICKENED PLAIN CONCRETE PAVEMENT APPROACH SLAB TO EXISTING SURFACE TRANSITION PER DETAIL ON SHEET DT105.
8. CONSTRUCT VALLEY GUTTER TO PLAIN CONCRETE PAVEMENT, DOWELED TRANSITION PER DETAIL ON SHEET DT105.
9. CONSTRUCT ASPHALT TO PLAIN CONCRETE PAVEMENT, DOWELED IMPACT SLAB PER DETAIL ON SHEET DT105.
10. CONSTRUCT ROUND CONCRETE BOX OUT WITH ISOLATION JOINT PER DETAIL ON SHEET DT106.
11. CONSTRUCT SQUARE CONCRETE BOX OUT WITH ISOLATION JOINT PER DETAIL ON SHEET DT106.
14. Thickened Edge Isolation Joint, no dowels, see detail J101.
15. Construct square concrete box with isolation joint per DT106 w/o dowels

**KEY MAP**  
N.T.S.

D & D VINEYARDS INC  
1010 NE 10TH AVENUE  
MCMINNVILLE, OR 97128

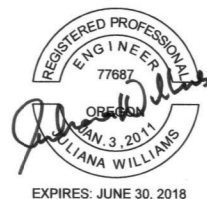


**AS-CONSTRUCT DRAWINGS**  
**OBEC**  
**5/2/18**

ISSUE	DATE	DESCRIPTION

PROJECT MANAGER STEPHANIE SERPICO, P.E.

PROJECT NUMBER 2016-8



**CITY OF MCMINNVILLE**  
**NE ALPINE AVENUE IMPROVEMENTS**  
**ADD ALTERNATIVE JOINTING PLAN**  
**NE ALPINE AVENUE STA: 207+50.09 TO 210+05**



HORIZONTAL SCALE  
0 10 20  
1" = 10'

DATE 12/2016 SHEET J204



MATCH LINE, SEE SHEET J204

MATCH LINE, SEE SHEET J206

ALAN WHITE  
1035 NE ALPINE AVENUE  
McMINNVILLE, OR 97128

ALAN & NANCY WHITE  
1055 NE ALPINE AVENUE  
McMINNVILLE, OR 97128

JACQUELINE HURL  
1065 NE ALPINE AVENUE  
McMINNVILLE, OR 97128

JACQUELINE HURL  
1075 NE ALPINE AVENUE  
McMINNVILLE, OR 97128

ROBERT & CAROLYN MALOTT  
1077 NE ALPINE AVENUE  
McMINNVILLE, OR 97128

OAK PARK PROJECT LLC  
1040 NE ALPINE AVENUE  
McMINNVILLE, OR 97128

OAK PARK PROJECT LLC  
1050 NE ALPINE AVENUE  
McMINNVILLE, OR 97128

OAK PARK PROJECT LLC  
1050 NE ALPINE AVENUE  
McMINNVILLE, OR 97128

ROBERT & MARY CASTLE  
1078 NE ALPINE AVENUE  
McMINNVILLE, OR 97128

ANDY & DEBRA LOISELLE  
1224 NE 11TH AVENUE  
McMINNVILLE, OR 97128

#### GENERAL NOTES:

- REFER TO GRADING PLANS, SHEETS GR204-GR206 FOR STATION, OFFSET, AND ELEVATION INFORMATION FOR ALL CURBS, GRADING, AND CRITICAL POINTS NOT SHOWN ON THIS PLAN.
- REFER TO SURFACING PLANS, SHEETS SU204-SU206 FOR ALL SURFACING COLORING, FINISHING AND MATERIAL INFORMATION NOT SHOWN ON THIS PLAN.
- REFER TO STORM DRAIN PLAN AND PROFILE, SHEETS SD203-SD204 FOR STORM DRAINAGE AND SANITARY SEWER CONSTRUCTION, AND UTILITY PLANS, SHEET UT202 FOR PRIVATE UTILITY COORDINATION.

#### JOINTING NOTES:

- CONTRACTION, CONSTRUCTION, CONTACT, WEAKENED PLANE, AND ISOLATION JOINTS IN THE ROADWAY SHALL BE CONSTRUCTED PER ODOT STANDARD SPECIFICATIONS, PROJECT SPECIFICATIONS, THESE PLANS, AND DETAILS ON SHEETS DT105 AND DT106. DEVIATIONS FROM THESE PLANS SHALL BE APPROVED BY THE ENGINEER.
- ISOLATION JOINTS AROUND STORMWATER, SANITARY, AND OTHER PRIVATE UTILITY STRUCTURES SHALL BE PER DETAILS ON SHEET DT106. THE CONDITION IS DEPENDENT ON THE JOINT LOCATIONS AND HAS BEEN IDENTIFIED ON THESE PLANS. IF CONDITIONS DIFFER IN FIELD, OR JOINTING IS NOT INDICATED ON THESE PLANS, JOINTING SHALL BE APPROVED BY THE ENGINEER.

#### LEGEND:

	ASPHALT APPROACH
	GRIND AND INLAY
	PEDESTRIAN PAVER SURFACING
	DECOMPOSED GRANITE SURFACING
	LANDSCAPING
	PLAIN CONCRETE PAVEMENT, DOWELED
	CONCRETE WALK

	STORMWATER PLANTER
	2' WIDTH TRUNCATED DOME DETECTABLE WARNING SURFACE
	2' WIDTH TACTILE SURFACE, SEE CONSTRUCTION NOTE 6
	TRANSVERSE CONTRACTION JOINT OR LONGITUDINAL WEAKENED PLANE, SEE CONSTRUCTION NOTES 1 & 2
	ARCHITECTURAL EDGE, SEE CONSTRUCTION NOTE 3
	ISOLATION JOINT, SEE CONSTRUCTION NOTE 4
	TOOLED "DUMMY" JOINT AT 6' NOM. INTERVALS PER ODOT STANDARD DRAWING RD720

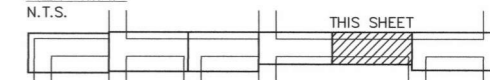
#### CONSTRUCTION NOTES:

- CONSTRUCT LONGITUDINAL JOINT (WEAKENED PLANE OR CONTACT JOINT, SEE JOINTING NOTES THIS SHEET), PER DETAIL ON SHEET DT105, TYPICAL.
- CONSTRUCT TRANSVERSE JOINT (CONSTRUCTION OR CONTRACTION, SEE JOINTING NOTES THIS SHEET), PER DETAIL ON SHEET DT105, TYPICAL.
- CONSTRUCT ARCHITECTURAL EDGE PER DETAIL ON SHEET DT105, TYPICAL.
- CONSTRUCT ISOLATION JOINT PER DETAIL ON SHEET DT106, TYPICAL.
- CONSTRUCT FOUNDATION BOX OUT WITH ISOLATION JOINT PER DETAIL ON SHEET DT106.
- CONSTRUCT ARCHITECTURAL SURFACE TREATMENT PER DETAIL ON SHEET DT103, TYPICAL.
- CONSTRUCT THICKENED PLAIN CONCRETE PAVEMENT APPROACH SLAB TO EXISTING SURFACE TRANSITION PER DETAIL ON SHEET DT105.
- CONSTRUCT VALLEY GUTTER TO PLAIN CONCRETE PAVEMENT, DOWELED TRANSITION PER DETAIL ON SHEET DT105.
- CONSTRUCT ROUND CONCRETE BOX OUT WITH ISOLATION JOINT PER DETAIL ON SHEET DT106.

- 14 Thickened Edge Isolation Joint, no dowels, see detail J101.
- 15 Construct square concrete box with isolation joint per DT106 w/o dowels

#### KEY MAP

N.T.S.

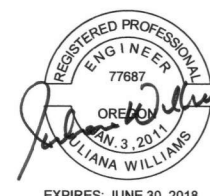


AS-CONSTRUCT DRAWINGS  
OBEC  
5/2/18

ISSUE DATE DESCRIPTION

PROJECT MANAGER STEPHANIE SERPICO, P.E.

PROJECT NUMBER 2016-8



EXPIRES: JUNE 30, 2018

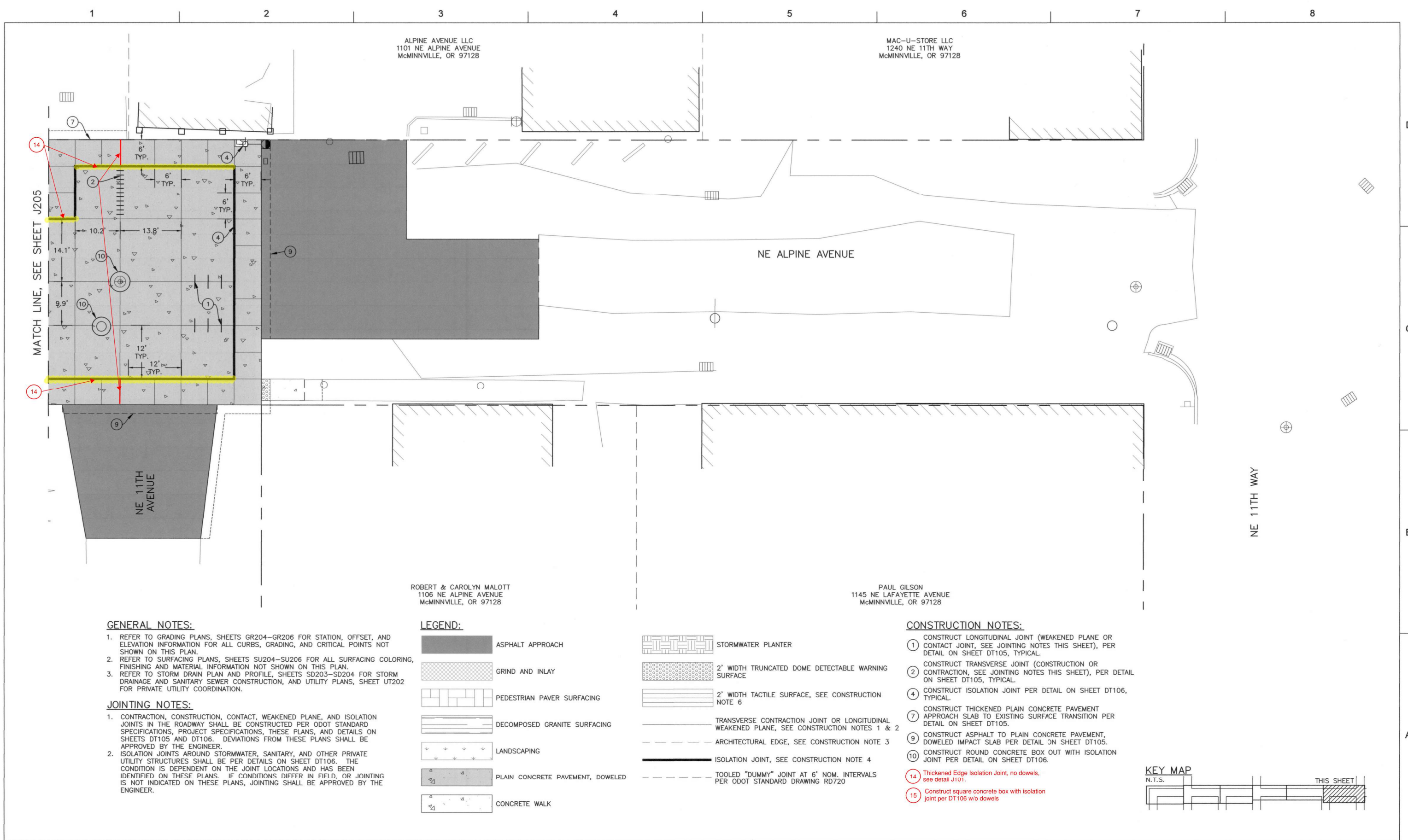
CITY OF MCMINNVILLE  
NE ALPINE AVENUE IMPROVEMENTS  
ADD ALTERNATIVE JOINTING PLAN  
NE ALPINE AVENUE STA: 210+05 TO 212+82



HORIZONTAL SCALE  
0 10 20 FEET  
1" = 10'

DATE 12/2016 SHEET J205





AS-CONSTRUCT DRAWINGS  
OBEC  
5/2/18

ISSUE DATE DESCRIPTION

PROJECT MANAGER STEPHANIE SERPICO, P.E.

PROJECT NUMBER 2016-8



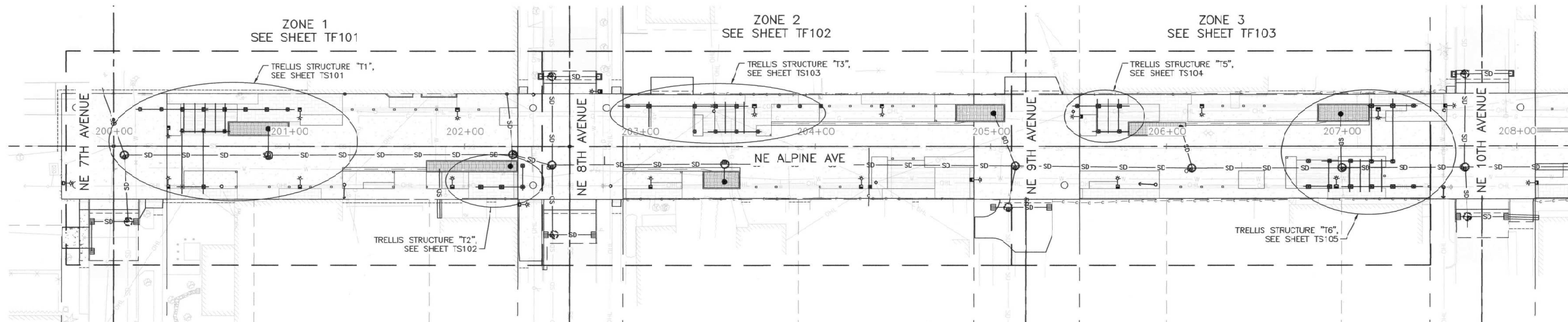
CITY OF MCMINNVILLE  
NE ALPINE AVENUE IMPROVEMENTS  
ADD ALTERNATIVE JOINTING PLAN  
NE ALPINE AVENUE STA: 212+82 TO 215+83



HORIZONTAL SCALE  
0 10 20 FEET  
1" = 10'

DATE 12/2016 SHEET J206





#### GENERAL NOTES:

- ALL MATERIALS AND WORKMANSHIP SHALL BE IN ACCORDANCE WITH THESE PLANS, THE SPECIAL PROVISIONS, AND THE REQUIREMENTS OF THE OREGON DEPARTMENT OF TRANSPORTATION STANDARD SPECIFICATIONS, 2015.
- ALL COLUMNS SHALL BE SET AND INSTALLED PLUMB.
- PRIOR TO FIELD WORK, CONTRACTOR SHALL:
  - FIELD VERIFY ALL MEASUREMENTS AND ALERT THE ENGINEER OF ANY DISCREPANCIES.
  - FIELD VERIFY FOUNDATION ELEVATIONS AND LOCATIONS PRIOR TO DELIVERING STRUCTURAL STEEL TO THE JOB SITE.
  - VERIFY ANY POTENTIAL GROUND CONFLICTS.
  - SUBMIT SHOP DRAWINGS TO THE ENGINEER FOR REVIEW AND CONFORMANCE WITH THE GENERAL INTENT OF THE DESIGN PLANS.

#### APPLICABLE DESIGN CRITERIA:

TRELLIS STRUCTURE DESIGNED IN ACCORDANCE WITH:

- AASHTO STANDARD SPECIFICATIONS FOR STRUCTURAL SUPPORTS FOR HIGHWAY SIGNS, LUMINAIRES, AND TRAFFIC SIGNALS, SIXTH EDITION, 2013.
  - WIND LOADING:
    - THREE-SECOND, BASIC WIND SPEED,  $V = 95$  MPH (REF. DDCT TM571).
    - $I_r$ , IMPORTANCE VALUE, 1.00.
    - RECURRENCE INTERVAL, 50 YEARS.
    - $C_v = 1.00$ ,  $G = 1.14$ ,  $C_d = 1.7$ .
    - $P_z = 41$  PSF APPLIED TO ALL EXPOSED AND HORIZONTALLY PROJECTED FACES.
  - VEHICULAR IMPACT:
    - AN EQUIVALENT STATIC 18.0 KIP HORIZONTAL LOADING APPLIED AT 2'-3" ABOVE FINISHED GRADE EQUIVALENT TO:
      - 6,500 LB PICKUP IMPACTING AT 4.5 MPH.
      - 66,000 LB TRUCK IMPACTING AT 1.5 MPH.

#### MATERIALS:

- ALL STRUCTURAL STEEL HAS BEEN DESIGNED IN ACCORDANCE WITH AISC SPECIFICATIONS FOR STEEL BUILDINGS, SHALL BE CORROSION RESISTANT, HIGH STRENGTH, LOW ALLOY (WEATHERING STEEL), AND MEETING SPECIFICATION 00560 AND THE FOLLOWING:
  - PLATES SHALL MEET A242 GRADE 50.
  - HOLLOW STRUCTURAL SECTIONS SHALL MEET ASTM A847 GRADE 50.
  - WIDE FLANGE STRUCTURAL SECTIONS AND ANGLES SHALL MEET ASTM A588 GRADE 50.
  - ANCHOR RODS SHALL BE IN ACCORDANCE WITH SPECIFICATION 02560.40, AND BE FULLY THREADED RODS MEETING ASTM A449-3, GRADE 120, WITH ASTM A563 D-1 NUTS AND ASTM F436 WASHERS, TYPE 3, IN ACCORDANCE WITH SPECIFICATION 02560.30.
  - STRUCTURAL STEEL BOLTS SHALL BE ASTM F3125 A325, TYPE 3, INSTALLED SNUG-TIGHT UNLESS NOTED OTHERWISE AND IN ACCORDANCE WITH SPECIFICATION 02560.20. FURNISH LOCK NUTS OR PAIRED NUTS AND LOCK WASHERS WITH ALL THREADED FASTENERS. WASHERS TO BE ASTM F326 TYPE 3. NUTS TO BE ASTM A563 DH3.
  - WELDING SHALL BE IN ACCORDANCE WITH SPECIFICATION 00560.26(b) AND SHALL MEET THE REQUIREMENTS OF AWS D1.1. SUBMIT WELDING SEQUENCES AND PROCEDURE TO THE ENGINEER FOR APPROVAL PRIOR TO COMMENCING ALL WORK UNLESS NOTED OTHERWISE. USE A MINIMUM:
    - $\frac{3}{8}$ " FILLET WELDS EXCEPT AS SHOWN.
    - COMPLETE JOINT PENETRATION WELDS FOR SPICED MEMBERS TO DEVELOP 100% NORMAL FLEXURE AND SHEAR CAPACITY OF THE SECTION AND TO PRODUCE A CONTINUOUS MEMBER.
    - WELDING AND CONSUMABLES SHALL MEET AWS 1.1 WITH 70 KSI (EXX70).
  - STEEL BEAMS SHALL BE STRAIGHT AND PRODUCED WITHOUT CAMBER.
- REINFORCED CONCRETE FOR PEDESTALS SHALL BE IN ACCORDANCE WITH SPECIFICATION 00540. IN ADDITION:
  - SHALL MEET CLASS 4000 HAVING A MINIMUM 28-DAY COMPRESSION STRENGTH OF 4,000 PSI.
  - ALL EXPOSED EDGES SHALL BE CHAMFERED  $\frac{1}{2}$ " UNLESS NOTED OTHERWISE.
  - PEDESTAL FINISHES AND COLOR SHALL MEET THE SPECIFICATIONS AND ARCHITECTURAL REQUIREMENTS.

\*All trellis gusset plate connections at HSS tube connections were tightened to 100ft-lb torque and field verified using a torque wrench.

#### MATERIALS:

- REINFORCING STEEL SHALL MEET ASTM A615, GRADE 60.
- MINIMUM COVER SHALL BE:
  - 1.5" FOR ABOVE GROUND CONDITIONS.
  - 3.0" FOR BELOW GROUND CONDITIONS.
- RECLAIMED OR SALVAGED HEAVY TIMBER SHALL MEET SPECIFICATION 00570 AND:
  - DOUGLAS FIR, MEETING NDS, GRADE 1 OR BETTER.
  - PRESERVATIVE TREATMENT FOR EXTERIOR EXPOSURE WITH AWPA STANDARD. USE CATEGORY UC33.
- APPLY AN ANTI-GRAFFITI COATING TO THE TRELLIS STRUCTURE IN ACCORDANCE WITH THE SPECIAL PROVISIONS.

#### ABBREVIATIONS:

ELEV.	ELEVATION
OPP.	OPPOSITE HAND
SIM.	SIMILAR
T.O.S.	TOP OF STRUCTURE
TYP.	TYPICAL
W.P.	WORK POINT
CL	CENTER LINE
FL	FLATE
CLR.	CLEARANCE
MIN.	MINIMUM

#### REFERENCES:

- FOR PROJECT SHEET INDEX, SEE SHEET GN100.
- FOR GENERAL LEGEND AND ABBREVIATIONS, SEE SHEET GN101.
- FOR GENERAL CONSTRUCTION NOTES, SEE SHEET GN102.
- FOR TYPICAL NE ALPINE AVE CROSS SECTION AND PAVEMENT DETAILS, SEE "DT" SHEETS.
- FOR TRAFFIC CONTROL PLAN, SEE "TC" SHEETS.
- FOR EXISTING CONDITIONS, SURVEY, AND DEMOLITION PLANS, SEE "S" AND "D" SHEETS.
- FOR CIVIL WORKS, SEE "C" SHEETS.
- FOR PAVEMENT JOINTING DETAILS, SEE "J" SHEETS.
- SEE "GR" SHEETS FOR GRADING PLANS AND STATION, OFFSET, AND ELEVATION INFORMATION FOR ALL CURBS, GRADING, AND CRITICAL POINTS NOT SHOWN ON THIS PLAN.
- FOR STORM DRAINAGE AND UTILITY PLANS, SEE "SD" AND "U" SHEETS.
- FOR EROSION CONTROL PLANS, SEE "EC" SHEETS.
- FOR SURFACING AND STREETSCAPE PLANS, SEE "SU" AND "ST" SHEETS.
- FOR PLANTING AND IRRIGATION PLANS, SEE "PL" AND "IR" SHEETS.
- FOR ILLUMINATION DETAILS, SEE "IL" SHEETS.
- FOR SIGNING AND STRIPING DETAILS, SEE "SS" SHEETS.
- FOR ARCHITECTURAL DETAILS, SEE "T" SHEETS.

#### TRELLIS STRUCTURE LEGEND:

	COLUMN
	FRAMING MEMBER
	HEAVY TIMBER FRAMING MEMBER
	SPICE LOCATION (F REQUIRED TO MEET FRAMING LENGTHS)



AS-CONSTRUCT DRAWINGS  
OBEC  
5/2/18

ISSUE DATE DESCRIPTION

PROJECT MANAGER STEPHANIE SERPICO, P.E.

PROJECT NUMBER 2016-8



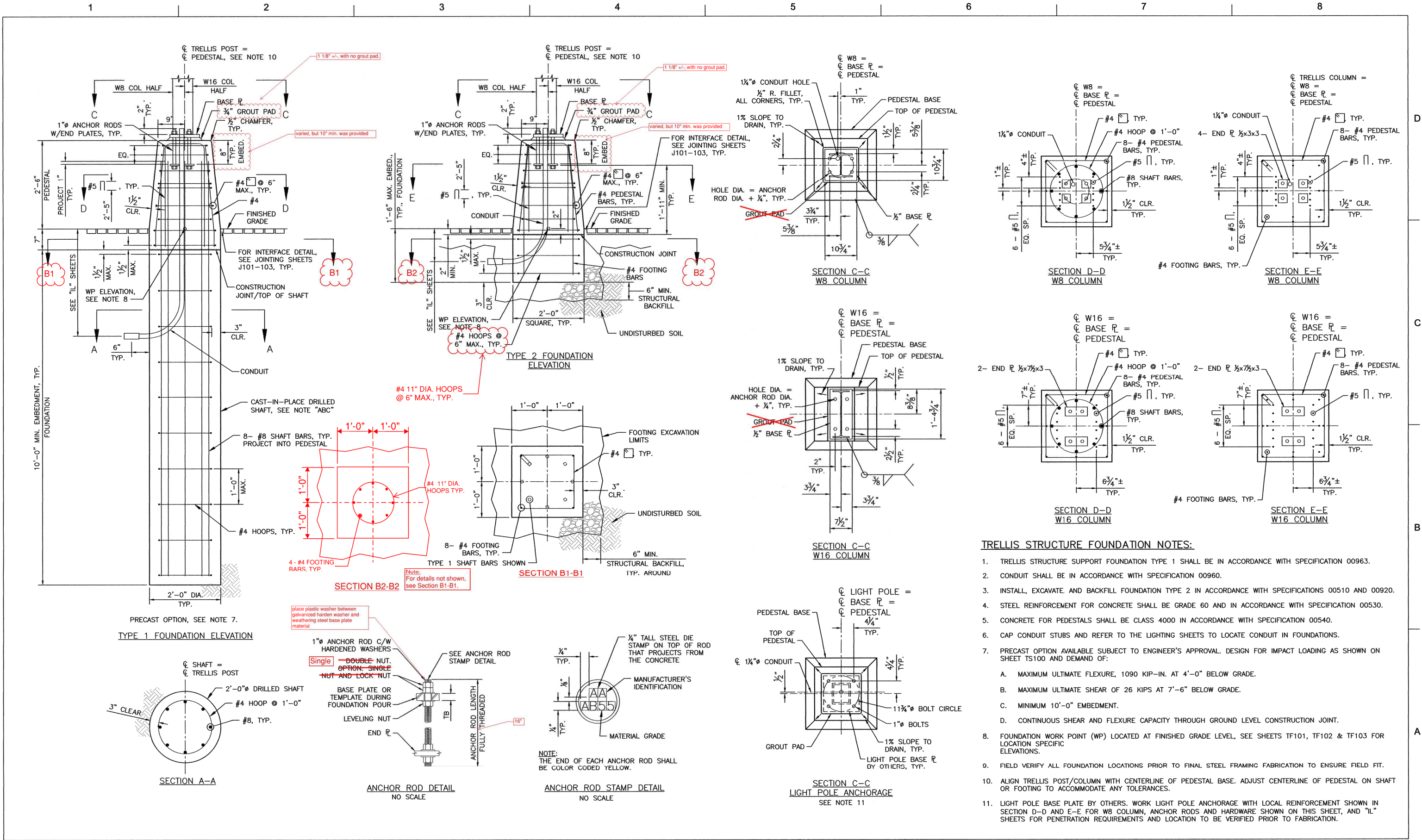
CITY OF MCMINNVILLE  
NE ALPINE AVENUE IMPROVEMENTS  
TRELLIS STRUCTURE KEY PLAN & NOTES  
NE ALPINE AVENUE STA: 202+44 TO 207+50



HORIZONTAL SCALE 0 30 60 FEET  
1" = 30'

DATE 12/2016 SHEET TS100





AS-CONSTRUCT DRAWINGS  
OBEC  
5/2/18

ISSUE DATE DESCRIPTION

PROJECT MANAGER STEPHANIE SERPICO, P.E.

PROJECT NUMBER 2016-8



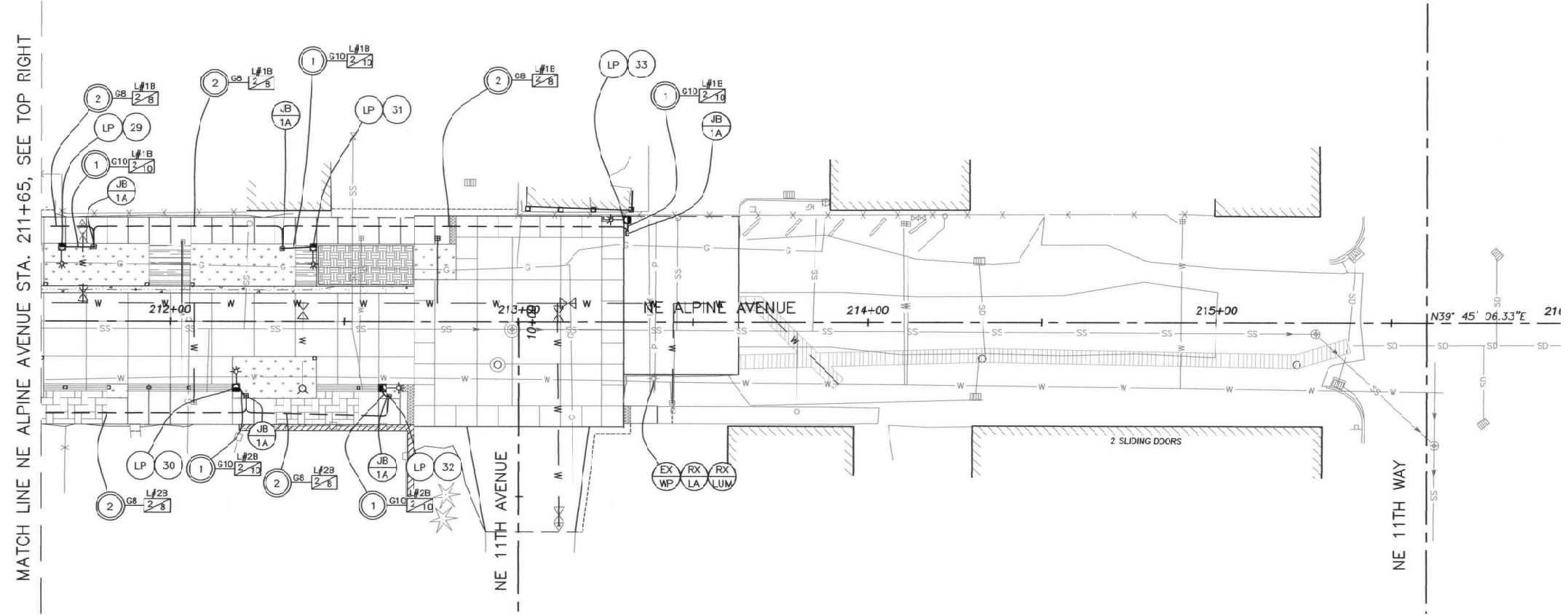
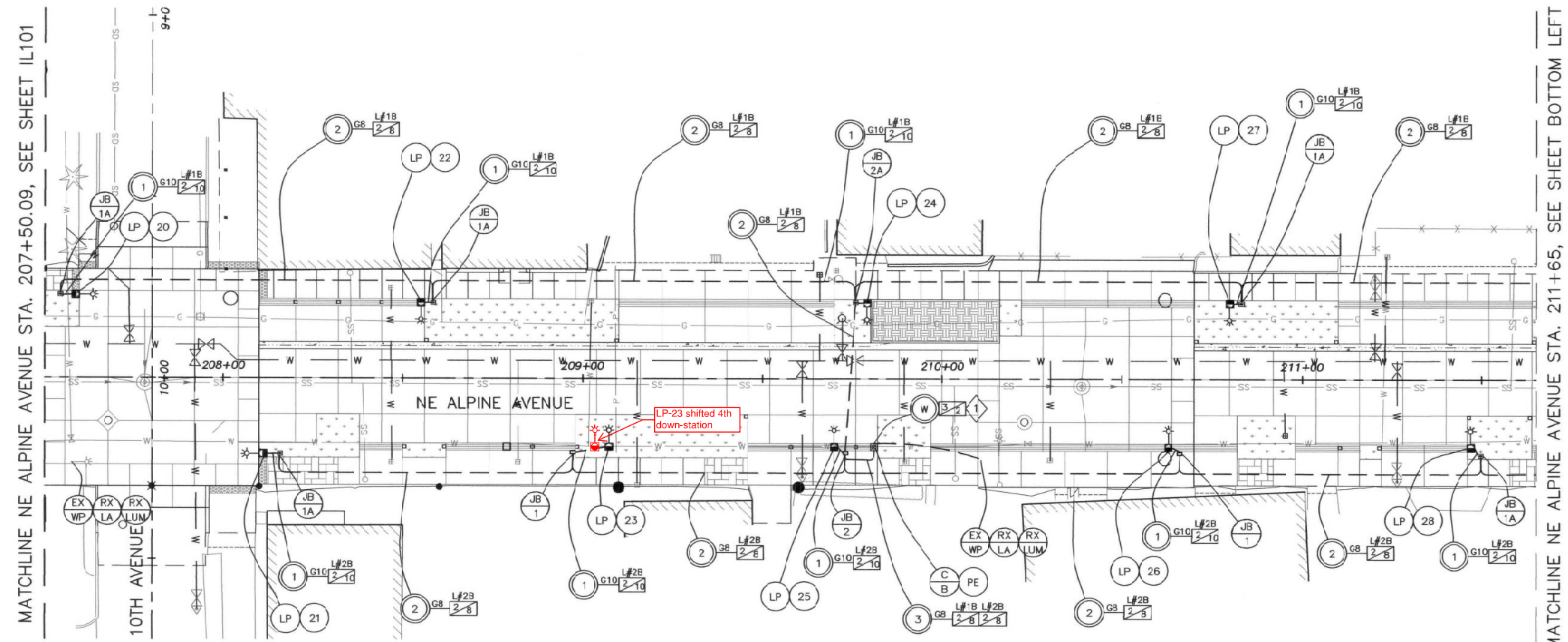
EXPIRES: 12/31/2018

CITY OF MCMINNVILLE  
NE ALPINE AVENUE IMPROVEMENTS  
TRELLIS STRUCTURE DETAILS  
NE ALPINE AVENUE

HORIZONTAL SCALE  
0 15 30  
1" = 15'

DATE 12/2016 SHEET TF301





- ### LEGEND
- POLES**
- LP INSTALL WOOD LIGHT POLE AND PENDANT STYLE LUMINAIRE FOR ROADWAY ILLUMINATION (SEE LIGHT POLE TABLE)
  - N NEW LIGHT POLE NO. (N) FOR ROADWAY ILLUMINATION (SEE LIGHT POLE TABLE)
  - EX WP MAINTAIN AND PROTECT EXISTING WOOD POLE
- CABINETS**
- C(N) INSTALL BASE MOUNTED CONTROL CABINET NO. (N) (SEE TM485). SEE SHEET IL206 FOR WIRING DIAGRAM.
- JUNCTION BOXES**
- JB 1 INSTALL 17"x10"x12" (MIN. DIMENSION) PRECAST CONCRETE JUNCTION BOX.
  - JB A INSTALL 17"x10"x12" (MIN. DIMENSION) PRECAST CONCRETE JUNCTION BOX WITH CONCRETE APRON.
  - JB 2 INSTALL 22" X 12" X 12" (MIN. DIMENSION) PRECAST CONCRETE JUNCTION BOX.
  - JB 2A INSTALL 22" X 12" X 12" (MIN. DIMENSION) PRECAST CONCRETE JUNCTION BOX WITH CONCRETE APRON.
- CONDUITS**
- S INSTALL (S = SIZE) INCH CONDUIT
  - W INSTALL (W = SIZE) INCH CONDUIT PER UTILITY REQUIREMENTS
- LUMINAIRES**
- RX LUM REMOVE EXISTING LUMINAIRE, BY OTHERS. COORDINATE WITH McMINNVILLE WATER AND LIGHT.
  - RX LA REMOVE EXISTING LUMINAIRE ARM, BY OTHERS. COORDINATE WITH McMINNVILLE WATER AND LIGHT.
- WIRES & CABLES**
- N/S INSTALL COPPER ELECTRICAL CONDUCTORS (N= NUMBER OF CONDUCTORS, S=SIZE OF CONDUCTORS).
  - NZ ROADWAY ILLUMINATION CIRCUIT NO. (N) FROM CONTROL CABINET (Z)
  - G# INSTALL GREEN INSULATED GROUND WIRE (# = AWG SIZE)
- MISCELLANEOUS**
- EX 1 RETAIN AND PROTECT EXISTING POWER POLE (POWER SOURCE)
  - PE INSTALL PHOTO CONTROL. SEE SHEET IL301 FOR DETAILS
- CONSTRUCTION NOTES**
- 1 COORDINATE POWER SERVICE CONNECTION WITH McMINNVILLE WATER AND LIGHT.
- NOTE:  
ALL CONDUIT WILL BE COMPACTED WITH AGGREGATE BACKFILL PER SPECIFICATION SECTION 00405.



**AS-CONSTRUCT DRAWINGS**  
OBEC  
5/2/18

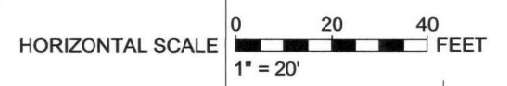
ISSUE	DATE	DESCRIPTION
-------	------	-------------

PROJECT MANAGER STEPHANIE SERPICO, P.E.

PROJECT NUMBER	2016-8



**CITY OF MCMINNVILLE**  
**NE ALPINE AVENUE IMPROVEMENTS**  
**ADD ALTERNATIVE LIGHTING PLAN**  
**NE ALPINE AVENUE STA: 207+50.09 TO 215+95.00**



DATE 12/2016 SHEET IL205